

# SILVERTON 48/50 CONVERTIBLE — SILVERTON



**Судостроитель:** SILVERTON

**Год постройки:** 2005

**Модель:** Катер для спортивной рыбалки

**Цена:** ЦЕНА ЯХТЫ ПО ЗАПРОСУ

**Местонахождение:** United States

**Длина общая:** 50' 0" (15.24m)

**Ширина:** 16' 4" (4.98m)

**Макс. осадка:** 4' 8" (1.42m)

**Крейс. скорость:** 25 Kts. (29 MPH)

**Макс. скорость:** 29 Kts. (33 MPH)

Купить **SILVERTON 48/50 CONVERTIBLE — SILVERTON** а также выбрать подходящую вам яхту из нашего каталога яхт вам поможет опытный яхтенный брокер Андрей Шестаков. На сегодняшний день компания **Shestakov Yacht Sales Inc.** имеет большое количество яхт в собственном списке продаж, а также тесно сотрудничает со всеми крупными яхтенными производителями по всему миру.

Для того чтобы купить яхту **SILVERTON 48/50 CONVERTIBLE — SILVERTON** а также проконсультироваться по любому вопросу связанному с покупкой, продажей, чартером яхт позвоните по телефону **+7(918)465-66-44**.

# ОГЛАВЛЕНИЕ

ОГЛАВЛЕНИЕ	2
ХАРАКТЕРИСТИКИ	5
Основная информация	5
Размеры	5
Скорость, вместимость и масса	5
Размещение	5
Корпус и палуба	6
Информация о двигателе	6
ПОДРОБНОЕ ОПИСАНИЕ	7
OVERVIEW	7
MFG PROVIDED DESCRIPTION	7
Accommodations	8
Galley	8
COMMAND BRIDGE & ELECTRONICS	8
Electrical Equipment	9
Mechanical	9
COCKPIT & FISHING EQUIPMENT	10
Hull	10
Исключения	10
Отказ от ответственности	10
ФОТОГРАФИИ	11
MAIN SALON LOOKING AFT FROM GALLEY-PORTSIDE	11
VIEW OF COCKPIT AND STERN	11
MAIN SALON TOWARD COMPANIONWAY & ENTERTAINMENT CENTER	11
GALLEY TO PORT	11
DINETTE TO STARBOARD	12
MASTER STATEROOM IS MID-SHIP	12
ENTRANCE TO FORWARD VIP STATEROOM	12

MASTER HEAD SINK & SHOWER STALL	12
FORWARD VIP STATEROOM CENTERLINE BERTH W/STORAGE BELOW	13
GUEST HEAD	13
GUEST HEAD WITH SHOWER STALL	13
WASHER/DRYER	13
U-SHAPED SEATING WITH TABLE FORWARD OF HELM STATION	14
ELECTRICAL PANEL AFT OF DINETTE	14
FLYBRIDGE STARBOARD SEATING	14
HELM ELECTRONICS	14
FLYBRIDGE - NEW REFRIGERATOR	14
HELM LOOKING TO PORT	14
ACCESS FROM FLYBRIDGE TO COCKPIT	15
HELM LOOKING TO STARBOARD	15
COCKPIT WET BAR WITH NEW REFRIGERATOR & ICEMAKER	15
KOHLER GENERATOR	15
ENGINE ROOM FORWARD WITH FRESH WATER SYSTEM TO CABIN	16
BATTERY BANKS	16
PORT ENGINE	16
FRONT OF PORT ENGINE	16
STARBOARD ENGINE	16
FRONT OF STARBOARD ENGINE	16
OIL CHANGER SYSTEM	17
FLOOR PLAN	17
WIDE SIDE DECKS/CUSTOM RAILING	17
BOW VIEW FROM FLYBRIDGE	17
CUSTOM STAINLESS STEEL RAILING	17
КОНТАКТЫ	18
Контактная информация	18
Телефоны	18

---

Время работы	18
Адрес	18

# ХАРАКТЕРИСТИКИ

## Основная информация

**Тип судна:** Катер для спортивной рыбалки

**Подкатегория:** Convertible

**Модельный год:** 2005

**Год постройки:** 2005

**Страна:** United States

**Верх:** Hardtop

**Открытая палуба мостика:** Да

**Кубрик:** Да

## Размеры

**Длина общая:** 50' 0" (15.24m)

**Ширина:** 16' 4" (4.98m)

**Макс. осадка:** 4' 8" (1.42m)

**Трапы:** 17' 6" (5.33m)

**Длина привального бруса:** 51' 7" (15.72m)

## Скорость, вместимость и масса

**Крейс. скорость:** 25 Kts. (29 MPH)

**Макс. скорость:** 29 Kts. (33 MPH)

**Водоизмещение:** 46000 Pounds

**Вместимость воды:** 200 Gallons

**Вместимость сточного бака:** 80 Gallons

**Объем топливного бака:** 800 Gallons

## Размещение

**Всего кают:** 3

**Всего коек:** 4

**Спальные места:** 6

**Всего ком. состава:** 2

## Корпус и палуба

---

**Материал корпуса:** Fiberglass

**Материал палубы:** Fiberglass

**Комплектация корпуса:** Modified V-Hull

**Цвет корпуса:** WHITE

## Информация о двигателе

---

**Двигатели:** 2

**Производитель:** Volvo Penta

**Модель:** D-12D-A-MP

**Тип двигателя:** Inboard

**Тип топлива:** Diesel

---

# ПОДРОБНОЕ ОПИСАНИЕ

---

## OVERVIEW

---

**THIS IS A FRESH WATER BOAT! A MUST SEE! When you hear "Like New Condition", the boat should look like this Silverton! This Silverton is truly pristine with all the right options and every imaginable upgrade! THIS IS A GREAT VALUE AND PRICED RIGHT!**

**Only 595 hours on Twin Volvo Penta D12D-A-MP (1430 TOTAL HP) fresh water cooled diesels! Kohler 13KW Generator & Inverter system. Electronics include Satellite TV, Raymarine R215 DSC VHF, ICOM IC-M602, Taiyo radio directional finder, Raymarine E-80 Chartplotter, Dual Raymarine E-120 units, AutoPilot, BOW THRUSTER, Autohelm ST60 Depth, Speed, Distance. Access the Flybridge via an integrated stairway. The Flybridge is air-conditioned with it's own designated A/C unit and Norcold refrigerator. FLYBRIDGE HAS HARD TOP WITH NEW ISINGLASS ENCLOSURE (JUNE, 2015) Accommodations include 3 staterooms which sleep 6 adults in 4 berths, two heads with shower stalls and VacuFlush toilets. New carpeting throughout the cabin areas and on the Flybridge. Full Galley up design for easy entertaining and meal preparation. New upgrades by the current owner include a Freedom Lift, Refrigerator and Ice Maker on the Cockpit. This boat has only spent it's initial first year in salt water. Since that time, this boat has been a fresh water boat in the summer and stored in a heated covered building during the winter months. Thus, low engine hours! She is truly a beauty and worth consideration! Owner has put in over \$40,000 in upgrades since buying the boat 7 years ago! We are proud to represent this great, beautiful Silverton. SHE IS LIKE NEW, INSIDE AND OUT!**

## MFG PROVIDED DESCRIPTION

---

The Silverton 48 Convertible hull lines, drawn by Donald Blount & Associates, have been designed to handle the rigors of the Atlantic Ocean, in which Silverton water-tests their boats. With a sharp entry and wide beam, the 48 will perform safely and comfortably in most sea conditions. Modern styling combines with safety and utility topsides. A wide, molded stairway leads from the expansive cockpit to the command bridge, making access safe and easy, even in a seaway. Visibility is excellent at all points from the helm and there is plenty of comfortable seating for the mate and guest on the bridge. Wide side decks and open foredeck have molded diamond non-skid for sure footing and an oversize stainless steel bow rail adds to the security. **Offering three staterooms and two heads along with an entertainment-sized salon and full service galley, the 48 will take comfort aboard to a higher level. Standard equipment will include a custom hardtop, upgradeable entertainment systems, top-of-line appliances and designer fabrics along with beautifully finished cherry woods and high-end hardware.** Power options have been chosen to provide excellent economy with right balance of speed and performance.

## Accommodations

Sleeps 6 adults comfortably in 3 staterooms, 2 heads. The interior has beautiful cherry wood throughout along with a designer decor. The **Master Stateroom** is mid-ship to port with a queen berth with an innerspring mattress that is accessible from three sides. There is storage in the base including a cedar-lined locker under the mattress and drawers at the foot of the berth. The ensuite head has a separate shower stall. The **Guest Stateroom** located in the bow also has a queen midline berth with generous storage space. This Stateroom has its own entrance to the second head, which also has an enclosed shower stall. The **Third Stateroom** is midship to starboard with twin over/under berths. There is a large hanging locker and has comfortable stand-up room for dressing. The **Main Salon** is roomy and quite comfortable with an L-shaped Ultraleather sofa that features a hideaway berth for extra guests. The Sofa has a built-in recliner.

- Vacu-Flush Toilets with Macerators & Y-Valves
- Soft rattle-free window blinds
- Bose Lifestyle 18 stereo system with surround sound
- 30" Sharp Aquous Flat Panel TV & Entertainment Center
- (5)Marine Reverse Cycle Air Conditioning/Heat Zones: Main Salon (16,000 BTU), Master Stateroom (10,000 BTU), Forward Guest Stateroom (10,000 BTU), Galley (12,000 BTU), Flybridge (16,000 BTU-**Upgrade**)
- Built-In Central Vacuum System
- Washer/Dryer Combo
- Sole' Flat Screen TV's with DVD players in all staterooms
- New Carpeting throughout cabin**
- New Satellite TV System**

## Galley

- Galley up configuration is to port forward of the Main Salon with the dining arrangement to starboard and opposite the Galley. This makes for easy entertaining and meal preparation.
- Princess 3-Burner electric stove top
- Sub-Zero 700BF & 700BR side-by-side Refrigerator/Freezer drawer system
- Sharp Convection/Microwave Oven
- Mr. Coffee Coffeemaker
- Corian countertops
- Attwood E20-220 20-gallon electric water heater

## COMMAND BRIDGE & ELECTRONICS

- The Command Bridge is quite spacious with a large seating area forward, complete with a Corian Table for entertaining and Norcold Refrigerator. The Flybridge also has **new carpeting**. The visability from the bridge helm is excellent! There is a spacious walkway behind captain's & passenger's chairs.
- Hard Top with **ALL NEW Isinglass enclosure, JUNE, 2015**
- **Designated Reverse Cycle A/C-Heat Unit for Flybridge (16,000 BTU) (UPGRADE)**
- Raymarine 10KW Radar with 4' open array
- Raymarine Ray 215 DSC VHF
- ICOM IC-M602 VHF



- Taiyo TD-L1550A Radio Directional Finder
- Raymarine E-80 Chartplotter/Radar
- (2)Raymarine E-120 Plotters - Can view TV on one until while cruising!
- Autohelm ST8001 Autopilot with Raymarine Smart Control Remote
- Autohelm ST60 Depth Sounder
- Autohelm ST60 Tridata
- Sony CDX-CA705M Stereo system w/remote control
- Ritchie Compass
- Bennett V351 Trim Tabs w/auto-return feature & digital display
- ACR Spot/flood light
- QL Bow Thruster Control
- Full Instrumentation (tach, engine oil pressure, temperature, volt)
- Engine System Monitors
- Engine Synchronizer
- Safe-T-Alert SA-10XL Monitor
- Hailing horn speaker
- **NEW ISINGLASS ENCLOSURE, JUNE, 2015!**
- **Sirius Weather added! (UPGRADE)**

---

## Electrical Equipment

---

- Kohler 13KW Fresh Water Cooled Generator with sound shield (487 hrs)
- **NEW Inverter System**
- Electrical Panel is behind the Flat Screen TV in the Main Salon.
- (2)Sets of dual group 8D batteries
- (2)Additional 8D batteries
- Glendinning Cable Master retrieval system
- Single 50Amp Shore Power
- Cable/Phone Jack Inlet
- (2)Professional Mariner Pro-Tech 2425 24V Battery Chargers
- (2)Sure-Power 52308 DC-DC Converters

---

## Mechanical

---

- Access the engine compartment from the cockpit area via a door and steps down.
- Twin Volvo-Penta D12D-A-MP diesel engines with **only 595 hours!** Engines are **turbo charged and Fresh Water Cooled.**
- **Volvo Penta EVC keyless engine start**
- **Integrated Gear/Throttles**
- **ZF-325 Transmissions**
- **Dripless Packing Glands**
- **5-Blade Ni-Bral propellers**

- **Bennett Trim Tabs w/Auto Tab Control**
- Oil-X-Change-R system
- Racor Fuel Filters
- Tilt-wheel Hydraulic Steering System
- Sea Fire 1000M 1301 Halon Fire Extinguishing System
- Multiple Rule 2000 gph bilge pumps

---

## COCKPIT & FISHING EQUIPMENT

---

- Wet Bar with NEW Refrigerator and NEW IceMaker. Wet Bar includes sink and tackle station and storage.
- Fishing equipment includes fish boxes, live well, and rocket launchers
- Fresh & seawater washdowns
- Dockside water inlet with in-line regulator
- **NEW FREEDOM LIFT**

---

## Hull

---

- USCG Safety Equipment
- Maxwell windlass with Flybridge remote & foot pedal controls
- Delta plow anchor with all chain rode (250Ft)
- **Custom stainless steel railings from bow back to cockpit for added safety.**

---

## Исключения

---

При продаже яхты исключаются личные вещи владельца.

---

## Отказ от ответственности

---

Компания предоставляет описание судна или яхты добросовестно, но не может гарантировать точность этой информации, а также не ручается за техническое состояние. Покупатель должен проинструктировать своих агентов или оценщиков исследовать представленную информацию более подробно, по собственному желанию. Продажа судна или яхты, изменение цены или снятие с продажи будет происходить без предварительного уведомления.

## ФОТОГРАФИИ

**VIEW OF COCKPIT AND STERN**



**MAIN SALON LOOKING AFT FROM GALLEY-PORTSIDE**



**MAIN SALON TOWARD COMPANIONWAY & ENTERTAINMENT CENTER**



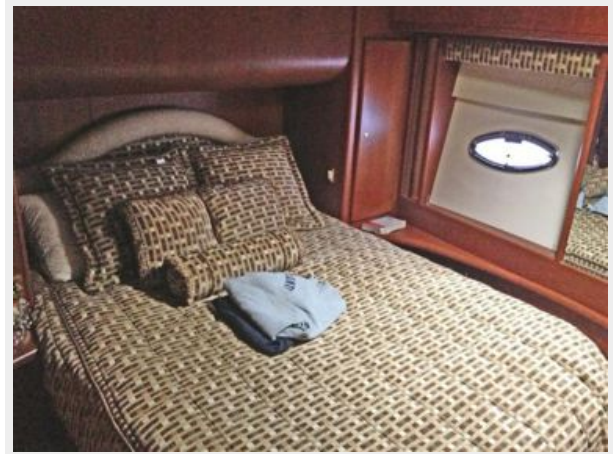
**GALLEY TO PORT**



**DINETTE TO STARBOARD**



**MASTER STATEROOM IS MID-SHIP**



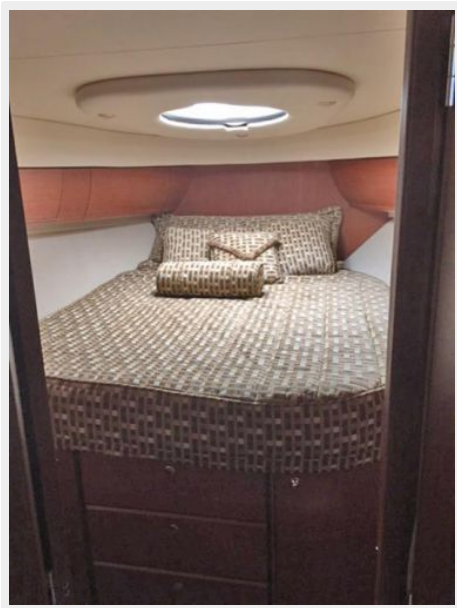
**MASTER HEAD SINK & SHOWER STALL**



**ENTRANCE TO FORWARD VIP STATEROOM**



**FORWARD VIP STATEROOM CENTERLINE  
BERTH W/STORAGE BELOW**



**GUEST HEAD**



**GUEST HEAD WITH SHOWER STALL**



**WASHER/DRYER**





### ELECTRICAL PANEL AFT OF DINETTE



### U-SHAPED SEATING WITH TABLE FORWARD OF HELM STATION



### FLYBRIDGE STARBOARD SEATING



### HELM ELECTRONICS



### FLYBRIDGE - NEW REFRIGERATOR



### HELM LOOKING TO PORT



## ACCESS FROM FLYBRIDGE TO COCKPIT

### HELM LOOKING TO STARBOARD



### COCKPIT WET BAR WITH NEW REFRIGERATOR & ICEMAKER



### KOHLER GENERATOR





### BATTERY BANKS



### ENGINE ROOM FORWARD WITH FRESH WATER SYSTEM TO CABIN



### PORT ENGINE



### FRONT OF PORT ENGINE



### STARBOARD ENGINE



### FRONT OF STARBOARD ENGINE

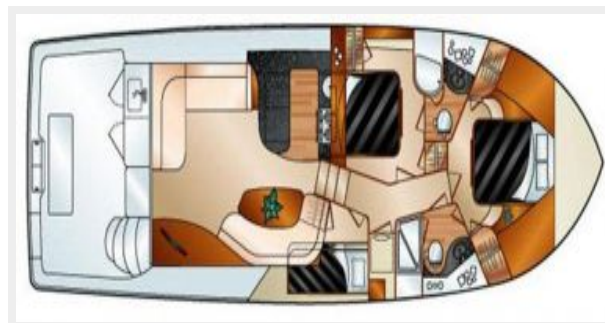




### OIL CHANGER SYSTEM



### FLOOR PLAN



### WIDE SIDE DECKS/CUSTOM RAILING



### BOW VIEW FROM FLYBRIDGE



### CUSTOM STAINLESS STEEL RAILING



# КОНТАКТЫ

---

Андрей Шестаков (Andrey Shestakov) – ведущий яхтенный брокер отдела продаж яхт и судов компании Shestakov Yacht Sales Inc. Официальный представитель Shestakov Yacht Sales Inc. для русскоговорящих клиентов в центральном офисе компании в Майами/Форт Лодердейл/Флорида/США.

## Контактная информация

---

Email: [andrey@shestakovyachtsales.com](mailto:andrey@shestakovyachtsales.com)

Web: [shestakovyachtsales.com](http://shestakovyachtsales.com)

## Телефоны

---

Краснодарский край: **+7(918)465-66-44**

США, Майами, Флорида: **+1(954)274-4435**

## Время работы

---

Понедельник – Суббота: **9:00 - 21:00**  
EDT

Воскресенье: **Закрито**

## Адрес

---



Harbour Towne Marina, 850 NE 3rd St,  
STE 213, Dania, FL 33004