

## SNOWBIRD — HAKVOORT



**Судостроитель:** HAKVOORT

**Год постройки:** 2010

**Модель:** Моторная яхта

**Цена:** **ЦЕНА ЯХТЫ ПО ЗАПРОСУ**

**Местонахождение:** Montenegro

**Длина общая:** 127' 11" (38.99m)

**Ширина:** 26' 3" (8.00m)

**Макс. осадка:** 8' 3" (2.51m)

**Крейс. скорость:** 10 Kts. (12 MPH)

**Макс. скорость:** 12 Kts. (14 MPH)

Купить **SNOWBIRD — HAKVOORT** а также выбрать подходящую вам яхту из нашего каталога яхт вам поможет опытный яхтенный брокер Андрей Шестаков. На сегодняшний день компания **Shestakov Yacht Sales Inc.** имеет большое количество яхт в собственном списке продаж, а также тесно сотрудничает со всеми крупными яхтенными производителями по всему миру.

Для того чтобы купить яхту **SNOWBIRD — HAKVOORT** а также проконсультироваться по любому вопросу связанному с покупкой, продажей, чартером яхт позвоните по телефону **+7(918)465-66-44**.

# ОГЛАВЛЕНИЕ

ОГЛАВЛЕНИЕ	2
ХАРАКТЕРИСТИКИ	5
Основная информация	5
Размеры	5
Скорость, вместимость и масса	5
Размещение	5
Корпус и палуба	6
Информация о двигателе	6
ПОДРОБНОЕ ОПИСАНИЕ	7
General	7
Aft Deck	7
Main Deck - Main Salon	7
Owner's Office/Stateroom	8
Salon - Dining Area	8
Galley	8
Galley Equipment	9
Lower Deck/Guest Staterooms	9
Crew Quarters	10
Laundry	10
Bridge Deck/Skylounge	10
Wheelhouse	10
Captain's Cabin	11
Sun Deck	11
Main Characteristics	11
Capacities	12
Speed and Range Under Power	12
Mechanical Equipment	13
Deck Equipment	14

Navigation & Communication Equipment	14
Entertainment Equipment	14
Security and Safety Equipment	15
Tenders & Watersport Equipment	15
Exclusions	15
Comments	15
<a href="#">Click here for virtual tour</a>	16
Исключения	16
Отказ от ответственности	16
ФОТОГРАФИИ	17
Aft deck	17
Aft deck	17
Aft deck	17
Salon view forward	17
Salon view aft	17
Dining	17
Foyer	18
Dining view fwd	18
Owner's office	18
Leading fwd to owner's stateroom	18
Owner's office	18
Master	18
Master	19
Master	19
Master bath	19
Master bath	19
Down to lower deck	19
Guest stateroom	19
Guest stateroom	20

Twin guest stateroom	20
Guest bath	20
Guest bath	20
Pilothouse	20
Guest bath	20
Circular staircase	21
Skylounge forward	21
Skylounge view aft	21
Skylounge aft	21
Sundeck	21
Bridge deck dining	21
Sundeck	22
Sundeck	22
Side decks	22
Jacuzzi	22
Stern shot	22
Aerial view	22
Aerial view	23
SNOWBIRD mounted bell	23
Layout	23
КОНТАКТЫ	24
Контактная информация	24
Телефоны	24
Время работы	24
Адрес	24

# ХАРАКТЕРИСТИКИ

## Основная информация

Тип судна: Моторная яхта	Подкатегория: Ocean Going
Модельный год: 2010	Год постройки: 2010
Страна: Montenegro	

## Размеры

Длина общая: 127' 11" (38.99m)	Длина по ватерлинии: 108' 0" (32.92m)
Ширина: 26' 3" (8.00m)	Макс. осадка: 8' 3" (2.51m)

## Скорость, вместимость и масса

Крейс. скорость: 10 Kts. (12 MPH)	Крейсерская скорость поворота: 1500 Kts.
Дальность на крейсерской скорости: 3800	Макс. скорость: 12 Kts. (14 MPH)
	Макс. скорость поворота: 1800 Kts.
Чистый вес: 368 Pounds	Вместимость воды: 2642 Gallons
Объем топливного бака: 12680 Gallons	

## Размещение

Всего кают: 5	Спальные места: 10
Всего ком. состава: 6	Каюта капитана: Да
Каюты экипажа: 3	Койки экипажа: 5
Спальных мест экипажа: 6	Комм. состав экипажа: 3

## Корпус и палуба

Материал корпуса: Steel	Материал палубы: Teak
Комплектация корпуса: Full Displacement	Цвет корпуса: White
	Дизайнер корпуса: Azure Naval Architects
Дизайнер экстерьера: Cor de Rover	Дизайнер интерьера: Michela Reverberi

## Информация о двигателе

Производитель: Caterpillar	Модель: C18 DI-TA
Тип двигателя: Inboard	Тип топлива: Diesel

---

# ПОДРОБНОЕ ОПИСАНИЕ

---

## General

---

The general arrangement established by Cor de Rover is exceptionally effective for a 39-metre boat, creating a real feeling of openness while at the same time retaining that vital degree of intimacy. **SNOWBIRD** is already a very high volume yacht for her length, and the attention to detail and use of colors enhances the space still further. **SNOWBIRD** also features the very latest technologies and systems to ensure maximum comfort, including high-end audiovisual equipment with full media server capabilities and iPod integration. Designed by Cor de Rover, the round bilge displacement steel hull features a comfortable deadrise and a flared bow with a fine entrance angle. **SNOWBIRD** provides room for ten guests including the owners and has been built according to Lloyd's regulations for Special Service Craft. Her propulsion package consists of two Caterpillar diesels, a straight drive and two fixed pitch propellers, offering a top speed of 11.6 knots at full load and a cruising speed of 10 knots. The maximum range is 3,800 nautical miles with a fuel capacity of 48,000 litres and freshwater capacity of 10,000 litres in double bottom tanks. Two Northern Lights generators provide 105 kW each with a max output of 90 KVA each. There are steering positions in the wheelhouse and on both bridge wings. The walls are panelled in book matched teak veneer in all the main areas of the yacht with the ceilings being finished in Marjilite linen and the floors covered with wenge. The overall interior aesthetic showcases clean contemporary architectural lines combined with a sense of warmth and color.

## Aft Deck

---

The wide main aft deck includes a seating area for eight people, two bars, a fridge/icemaker and stairways leading down to the integrated swimming platform. The lazarette is designed to be converted into a full beach club with bar service and seating inside as well as on the swim platform.

## Main Deck - Main Salon

---

Entering **SNOWBIRD** by her main entrance, the foyer sets the tone for what lies ahead. The central stairway exudes elegance and style with gliding steps and a paneled wall of teak and backlit LED lighting with insets of leather and mother of pearl. An alcove featuring vintage nickel and zebra skin seating and bronze side table serves as a buffer between the main public spaces to aft and the master suite forward. The foyer also includes a cabinet of walnut, stainless steel insets and goatskin parchment, which opens up to become a coffee station. A tall Cubist bronze sculpture by Bruce Beasley creates a loose division between the formal dining room and the salon area. It is flanked by glazed lamps, hand pottered by Christopher Spitzmiller of New York, three hand-turned Baroque crystal bowls and a small plaster sculpture by Louise Nevelson. The two circular sofas are intended to make the room multipurpose, either for conversation, watching

a movie or just relaxing and enjoying the view while underway. The color scheme is shades or rich ocean blue, navy, ivory and accents of orange; the Tai Ping carpet has a navy blue circular border of mohair and silk, with an inset of ivory wool. Covered in genuine ostrich skin, the Hakvoort made oval ottoman can be flipped over into itself to create a coffee table clad in honey ivory. The aft part of the conversation circle is completed with two chairs made by Bonacina-Pierantonio in Italy. These chairs swivel to allow their occupants to take in the vista over the aft deck or face the main group.

---

## Owner's Office/Stateroom

**Owner's Office** Moving forward of the main entrance, we first enter the owner's office which includes an Eames executive chair in parchment calfskin with a teak desk, and two vintage Brno chairs by Mies van der Rohe, finished in polished stainless steel and reupholstered in orange saddle leather. Designed to offer the owner a comfortable space for conducting business while travelling. **Owner's Stateroom** Moving into the full beam owner's stateroom, all the furniture is built-in so as to extend the width of the boat. Dispensing with the bulkhead allows for an open-plan arrangement between the bedroom and bathroom, although a division of sorts can be created by lowering the motorized flatscreen television from the ceiling. The linens on the king-sized bed are custom made and embroidered, while the bedspread is a hand-painted linen in a Venetian design with a backing in Loro Piana cashmere. The bench on the starboard side is in orange alpaca with textiles from Pierre Frey and lamps by Christopher Spitzmiller. On the opposite wall is a classic vanity table with a pull-up mirror and Pippa stool from Hermes of Paris. Aft of this is the large walk-in dressing room with seats: Upholstered orange stingray Shagreen on the doors give a luxurious tailored effect. The bathroom cell has a centered whirlpool bathtub bordered on either side by two free-standing glass sings. Here and elsewhere onboard **SNOWBIRD** all the hardware is by German company Dornbracht. The stone in this bathroom is crema delicate marble from Italy, while the shower is made of curved frosted glass and offers a very clean and contemporary look.

---

## Salon - Dining Area

With dining table for 10 guests forward of the main salon, we find a custom teak, wenge and mahogany dining table with vintage dining chairs by Gio Ponti. The division between salon and dining has a large flat screen TV on a lift + DVD recorder/player.

---

## Galley

Also found on the main deck, discretely located off the central foyer, is a galley that is fully-equipped to serve the needs of **SNOWBIRD's** top chef. An electrically operated door leads from the galley/pantry to the dining room, and a dumbwaiter up to the bridge deck hallway. Walls are covered with Formica or veneer, ceiling to be hard-plastic covered and the floor is covered with Forbo surestep, sealed against walls. The cupboards exteriors in Formica or veneer, their



interiors, shelves, drawers, etc. lined with hard-plastic and the working tops are made of granite.

## Galley Equipment

---

- 1 x Electric grill
- 1 x Steam oven
- 1 x Hot plate
- 1 x Trash compactor
- 1 x Miele commercial dish washer with short cycle
- 1 x Professional mixer
- 1 x Coffee machine fixed plumbed.
- 1 x Hot water machine (cooker)
- 1 x Large icemaker
- 1 x Wine cooler
- 1 x Deep fryer
- 1 x Full height freezer unit make Foster
- 2 x Full height refrigerating units make Foster
- 1 x Salamander

## Lower Deck/Guest Staterooms

---

**SNOWBIRD** has four guest suites, all are endowed with highly individual color schemes with bold patterns and custom-woven Parisian fabrics. The very spacious bathrooms have freestanding glass bowl sinks and rain showers. The two **Forward Suites** have twin beds that can be combined into a double. A parasol theme in bright orange and white stripes prevails in the portside cabin. The color scheme in the starboard twin is blue and turquoise in a jovial woven fabrics with swirly patterns. The two aft **VIP** staterooms have a full king-size bed. The theme in the port VIP is an aubergine purple on ivory with a headboard upholstered in embossed crocodile skin. Meanwhile, the starboard VIP features a bright fire engine red rocket ship pattern on ivory. The VIP heads feature full-height wardrobes with a door that can close the whole space off to create a separate dressing room, plus a bath tub as well as a shower.

---

## Crew Quarters

---

**Forward crew cabins** 2 x Double cabins in the fore-ship with two bunks over each other and the crew mess at portside. One of the cabins is converted into a three person cabin by extending the top bunk into a double. **Crew's bathroom** 3 x Bathrooms with shower cabin, head and a wash basin with hot and cold water. Sink counter of Corian with lockers under and above and mirror.

**Mess Room** At port side a mess room to be arranged with large seating area with vinyl upholstered seats with stowage under. Table with folding leaf to seat two extra people. Further lockers, drawers, book shelves and an entertainment unit with LCD flat screen TV, DVD player and stereo as well as the alarm system repeater panel and CCTV monitor.

---

## Laundry

---

At starboard side. Floor of Forbo type Surestep, walls and ceilings lined with hard plastic. Arranged with lockers under the bunk for linen storage. Equipment: • 2 x Miele household stacked type washing machines, W3523 cap. 5 kg, • 2 x Miele household stacked type tumble dryers, T4463C cap. 5 kg, • 1 x Foldable ironing board with steam iron

---

## Bridge Deck/Skylounge

---

Alighting the staircase to the bridge deck, a more light-hearted and casual ambience is found beginning with a circular alcove with inlaid abstract mural of backlit panels, inlaid leather, mahogany, teak, and capiz shell panels. To the left is an onyx day-head, and the spacious full-beam sky lounge is to our right. This space is both fun and sophisticated. The abiding impression is of a room that family and friends can play games, read books, watch movies on the large pop-up screen or enjoy a drink at the bar while still interacting with each other. The centerpiece of the furnishings is a parchment and bronze coffee table by Holly Hunt and a sofa with fabrics by Pierre Frey. Custom French deco lamps on either side are hand-forged bronze by John de Merry, while the onyx and wenge side table were made by Hakvoort. The curved bar is made of walnut and ebony with insets in a starburst pattern of shagreen and a top of onyx. The barstools were custom made in Italy by Poltrona-Frau and upholstered in red leather with polished stainless steel accents. Another one-off artefact is the leather cube games compendium. Handmade by Geoffrey Parker in London, it offers no less than 35 different games, from Trivial Pursuit to backgammon. The stools either side are by Taylor Llorente and upholstered in American alligator hide with polished stainless steel and Macassar Ebony. All of the resides on a cream cowhide rug by Kyle Bunting, the Moroccan-style pattern of which adds a little exotic spice to the room.

---

## Wheelhouse

---

Finished in wood and leather with teak and holly floors and an upholstered ceiling, the Wheelhouse contains a fully integrated bridge by Radio Holland, including five Hatteland

screens for radars, chart plotter and conning & alarm panel.

## Captain's Cabin

Aft of the wheelhouse is a captain’s cabin with ensuite bathroom, a double bed and ample stowage space. The walls and doors are finished in teak veneered joinery and the floors in teak and holly. A Captain/couple can comfortably sleep with very close proximity to the Bridge.

## Sun Deck

With so much to admire indoors, it is easy to forget that SNOWBIRD also has some of the finest al fresco facilities imaginable, providing guests with a myriad of options for dining, relaxation and entertainment. The sundeck features three John Hutton-designed Summit lounge chairs, a barbecue and a bar with two semi-circular dining areas that are built-in and can also convert to sunbeds. Further forward is an eight person infinity edge Jacuaai hot tub surrounded by sun pads on all sides. The overhead hard top can be supplemented with sail cloth biminis forward and aft as well as over the seating and lounging area forward of the bridge. The principal al fresco dining space is the bridge deck aft, which features a varnished teak table for ten and ample buffet space. There are two semi-circular settees at the aft end of this deck, which is very long for a boat of this size. Another outdoor highlight on the bridge deck is the seating are forward of the wheelhouse which offers some spectacular views when underway. The seating arrangement includes a practical teak table, as well as sun beds installed flush to the structure. The forward part houses a tender and a deck crane while a hatch leads down to the forepeak.

## Main Characteristics

Type	Motor Yacht round bilge displacement hull with good dead rise, transom, level keel, flared bow with fine entrance angle and 5 watertight bulkheads
Hull No:	BN 245
Builder:	Hakvoort
Naval Architect:	Azure Naval Architects
Exterior Design:	Cor D. Rover Design
Interior	Michela Reverberi / Illuminus

**Design:****Year:** 2010**Classification:** Lloyd's +100A1 S.S.C. Yacht Mono G6 +LMC + UMS regulations and MCA compliant**Construction:** Steel hull fully welded, Aluminium Alloy Superstructure required by classification**Crew:** 6/7**Flag:** Cayman Islands**Engines:** 2 x 600 HP Caterpillar C18 DITA, aft position**GRT:** 368 tons

## Capacities

---

**Accommodation:** 10 x Guests in 5 x Cabins**Crew:** 6/7 x Crew**Fuel:** 47,999 litres/12,680 US gallons 38.5 tons = marine diesel oil minimum**Fresh Water:** 10,001 litres/2,642 US gallons**Lube Oil:** 1,000 litres/264 US gallons**Dirty Oil:** 1,000 litres/264 US gallons

## Speed and Range Under Power

---

**Maximum Speed:** 12 knots at 1,800 rpm at full load

**Cruising speed:** 10 knots minimum at full load at 1,500 rpm

**Range at 10.5 knots:** 3,800 nm incl. 54 kW generator output (including a service factor of 5% and 10% remaining fuel in the tanks).

**Range at 9 knots:** 5,500 nm incl. 54 kW generator output

## Mechanical Equipment

---

**Main Engines** 2 x Caterpillar diesel engines type C18 DITA, Mkl, each with an MCR (maximum continuous-rating) of 447 kW at 1800 rpm.

**Propulsion System:** Straight drive, oil lubricated shafts, 2 x Fixed Pitch propellers

**Stabilizers:** Naiad KN520 Zero-speed stabilizers

**Generators:** 2 x Northern Lights type M1066A1: rating 105 kW at 1,500 rpm

**Electric System:** European constant frequency parallel system, automatic paralleling and load sharing, system voltage 230/400 V - 50 Hz.

**Control Stations:** 3 x Positions: wheelhouse & both bridge wings; plus emergency control near steering gear

**Steering System** Hydraulic cylinder between twin spade rudders, 2 x Main pumps

**Bow Thrusters:** Jastram

**Fire control and Monitoring:** Ultra Fog Watermist and Novec in engine room Dekasis Ships Alarm System

**Watermaker:** HEM: 2 X 5,000 litres each

## Deck Equipment

---

**Passerelle:** Cramm

**Cranes:** Bezenzoni

## Navigation & Communication Equipment

---

**VHF:** 2 x Sailor RT-4801 1 x Additional VHF Bridge Sailor RT 4800

**VHF or UHF:** 4 x Additional Motorola GP 340

**EPIRB:** 1 x Epirb Jotron 40S MK II

**SART:** 2 x Tronsart

**GMDSS VHS Handhelds:** 2 x Jotron TR 20

**Navtex:** 1 x Furuno NX-700A

**GSM (Quad Band):** 1 x Ericsson W-25

**GSM:** 5 x Hatteland 19" series 11;3 x vdc, 2 Vac

**SSB:** 1 x Additional SSB Sailor System 5000

## Entertainment Equipment

---

**TV - Video – HiFi** The yacht boasts a sophisticated Kaladesceipe AV system with Crestron controls and i-Pod integration system, as well as server-based media access featuring movies, music, weather, photos, internet radio, and many other sources in all staterooms, public spaces, and crew cabins. **Captain's Cabin** 1 x 21" multi-standard flat screen LCD colour TV 1 x DVD player 1 x Car-type hi-fi system with two speakers **Crew Mess** 1 x 28" multi standard flat screen LCD colour TV with CCTV input 1 x DVD player 1 x Car-type Hi-Fi system with two loudspeakers

**Guest Cabins** 2 x 21" Multi standard flat screen LCD colour TV's, 2x 32" Multi standard flat screen LCD colour TV's 4 x DVD players, 4 x Hi-Fi systems with 8 speakers (2 x each cabin) 2 x TV's will be installed on a lift **Crew cabins** 3 x Car-type Hi-fi systems with 6 loudspeakers (2 each cabin) **Wheelhouse** 1 x Mini-Hifi set with two speakers. **Galley** 1 x Mini-Hifi system with four speakers **Main Saloon** 1 x Multi standard 42" flat screen LCD colour TV on lift system 1 x Hi-Fi system 1 x DVD Recorder/player with 4 x speakers **Sky lounge** 1 x Wall mounted 42" multi standard flat screen LCD colour TV 1 x Hi-Fi system 1 x DVD recorder/player with 4 speakers **Sundeck** 1 x Bose freespace 6 music system 4 x Bose 131 hi-fi loudspeakers with one volume controller **Boat deck** 6 x Remote speakers of the sky lounge system. **Main deck** 4 x Remote speakers of the main saloon system. **Foredeck** 2 x Remote speakers from the sky lounge system. **Owner's cabin** 1 x 42" multi standard flat screen LCD colour TV on lift 1 x DVD recorder/player 1 x Hi-fi surround set with 5 loudspeakers Remote speakers installed in owner's office and wardrobe

---

## Security and Safety Equipment

Elbex CCTV system comprising: • 2 x Fixed camera's on the side decks • 1 x Fixed camera on the aft deck • 1 x Fixed camera on the bridge deck aft • 1 x Camera with pan/tilt built in and zoom lens in the E.R and • 1 x Identical camera in the mast • The camera in the mast to have night vision • 1 x 14"monitors with sequencer in the mess room • 1 x 14"monitor in the aft peak • 1 x Of the monitors will have pan/tilt control • 1 x Programmable video motion detector for aft deck camera • Camera's can also be viewed on one of the five 20" LCD screens in the wheelhouse

---

## Tenders & Watersport Equipment

Tender • 1 x 36' Fjord Chase • 1 x 430 DL Novurania tender

Watersport • 2 x Yamaha Waverunners • Yamaha stand-up jet ski • 2 x SeaBobs • Inflatables • SCUBA dive-center and all gear • Wakeboards • Waterskis • Wakeskate • Wakesurf • Tubes

---

## Exclusions

Exclusions include all of Owner's personal effects. Exclusion list of art work and other items available upon request.

---

## Comments

An absolutely immaculate Dutch vessel delivered in April 2011, built to the highest quality by the Hakvoort shipyard. ***"Not for sale to U.S. Residents while in U.S. waters."***

---

## Click here for virtual tour

---

<http://www.brokerageapps.com/tours/HNB6667>

---

## Исключения

---

При продаже яхты исключаются личные вещи владельца.

---

## Отказ от ответственности

---

Компания предоставляет описание судна или яхты добросовестно, но не может гарантировать точность этой информации, а также не ручается за техническое состояние. Покупатель должен проинструктировать своих агентов или оценщиков исследовать представленную информацию более подробно, по собственному желанию. Продажа судна или яхты, изменение цены или снятие с продажи будет происходить без предварительного уведомления.



# ФОТОГРАФИИ

Aft deck



Aft deck



Aft deck



Salon view forward

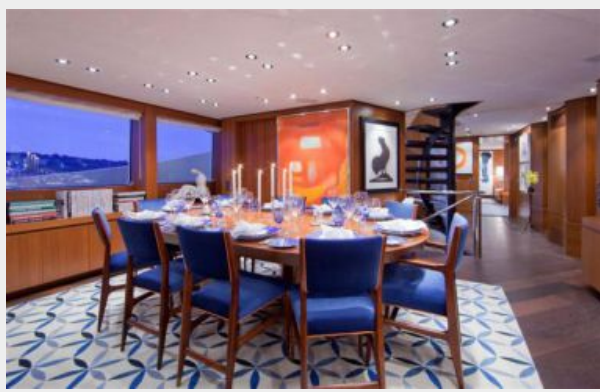
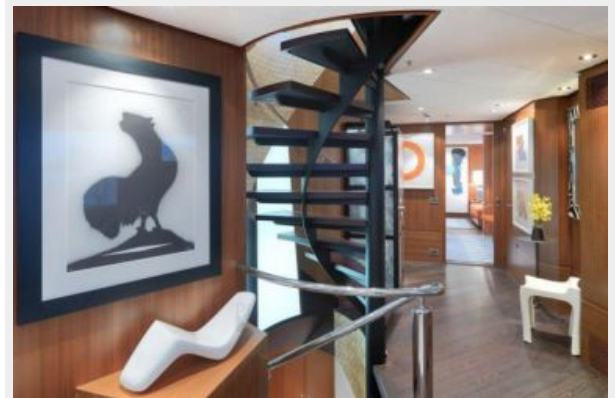
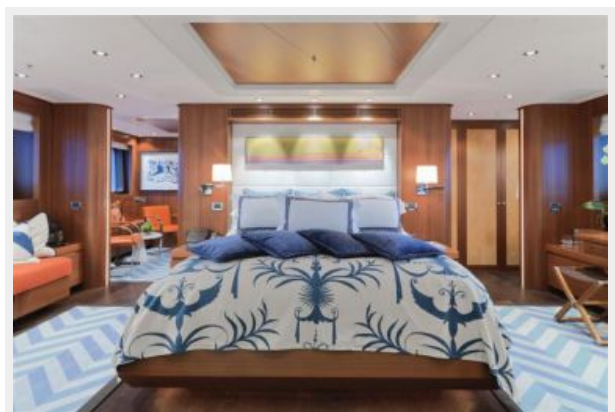


Salon view aft



Dining



**Dining view fwd****Foyer****Leading fwd to owner's stateroom****Owner's office****Owner's office****Master**



**Master**



**Master**



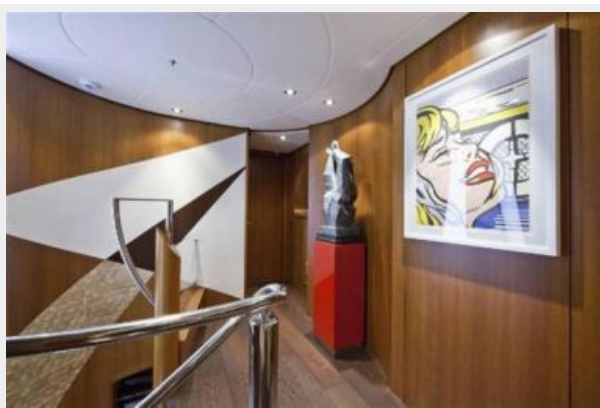
**Master bath**



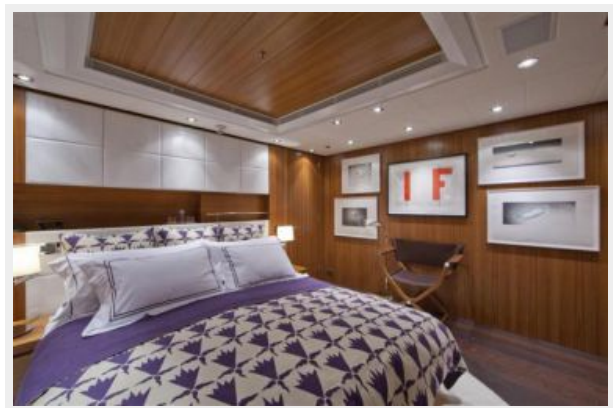
**Master bath**

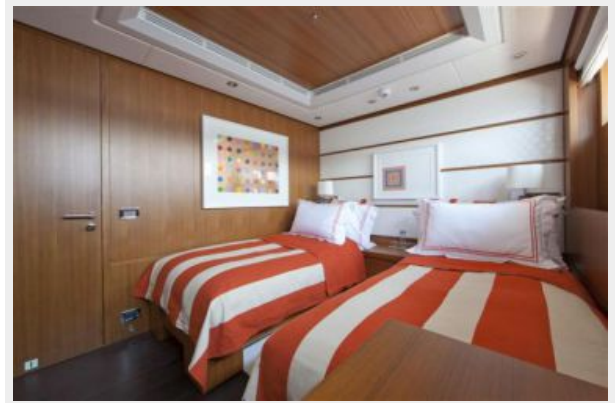
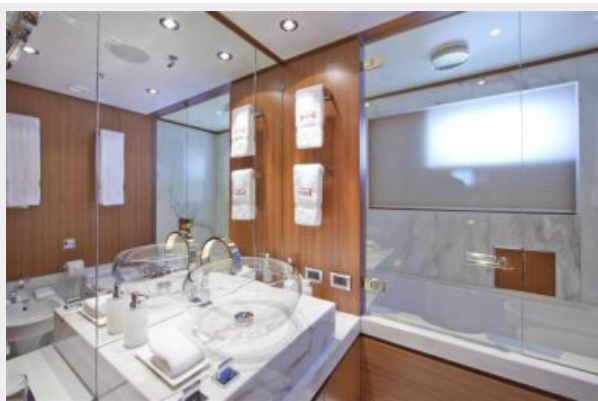
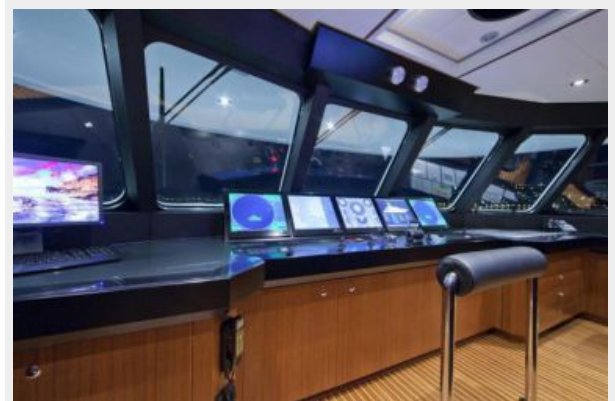


**Down to lower deck**



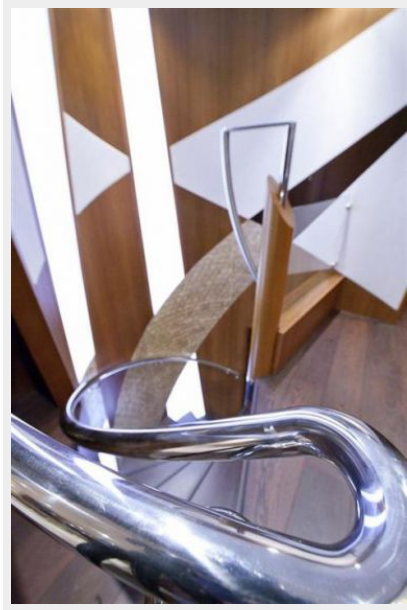
**Guest stateroom**



**Guest stateroom****Twin guest stateroom****Guest bath****Guest bath****Guest bath****Pilothouse**



**Circular staircase**



**Skylounge forward**



**Skylounge view aft**



**Skylounge aft**



**Bridge deck dining**



**Sundeck**



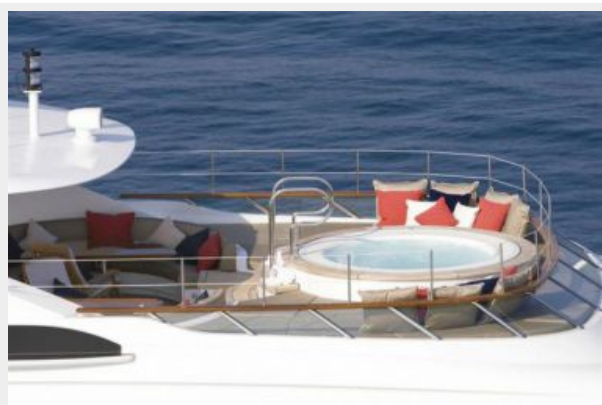
**Sundeck**



**Sundeck**



**Jacuzzi**



**Side decks**



**Aerial view**



**Stern shot**





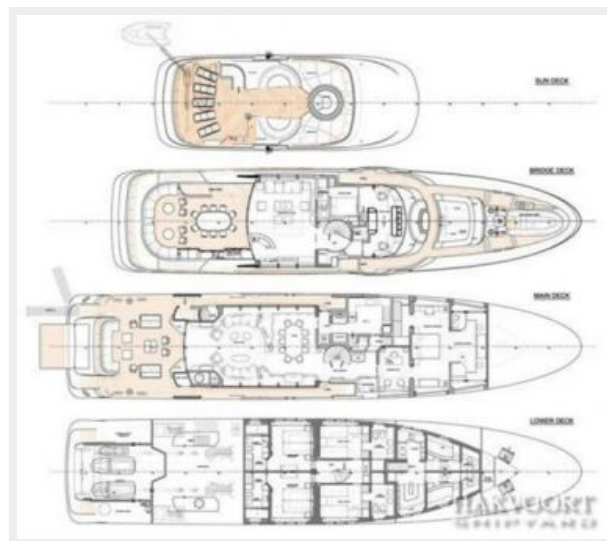
Aerial view



SNOWBIRD mounted bell



Layout



# КОНТАКТЫ

---

Андрей Шестаков (Andrey Shestakov) – ведущий яхтенный брокер отдела продаж яхт и судов компании Shestakov Yacht Sales Inc. Официальный представитель Shestakov Yacht Sales Inc. для русскоговорящих клиентов в центральном офисе компании в Майами/Форт Лодердейл/Флорида/США.

## Контактная информация

---

Email: **andrey@shestakovyachtsales.com**

Web: **[shestakovyachtsales.com](http://shestakovyachtsales.com)**

## Телефоны

---

Краснодарский край: **+7(918)465-66-44**

США, Майами, Флорида: **+1(954)274-4435**

## Время работы

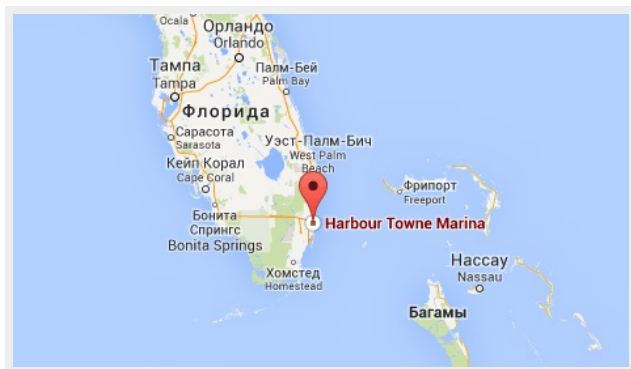
---

Понедельник – Суббота: **9:00 - 21:00**  
EDT

Воскресенье: **Закрыто**

## Адрес

---



Harbour Towne Marina, 850 NE 3rd St,  
STE 213, Dania, FL 33004