

GAME HOG — VIKING



Builder: VIKING

Year Built: 1996

Model: Sport Fisherman

Price: PRICE ON APPLICATION

Location: United States

LOA: 47' 0" (14.33m)

Beam: 15' 6" (4.72m)

Max Draft: 4' 5" (1.35m)

Cruise Speed: 26 Kts. (30 MPH)

Max Speed: 30 Kts. (35 MPH)

Our experienced yacht broker, Andrey Shestakov, will help you choose and buy a yacht that best suits your needs **Game Hog — VIKING** from our catalogue. Presently, at Shestakov Yacht Sales Inc., we have a wide variety of yachts available on our sale's list. We also work in close contact with all the big yacht manufacturers from all over the world.

If you would like to buy a yacht **Game Hog — VIKING** or would like help answering any questions concerning purchasing, selling or chartering a yacht, please call **+1(954)274-4435**

TABLE OF CONTENTS

TABLE OF CONTENTS	2
SPECIFICATIONS	3
Overview	3
Basic Information	3
Dimensions	3
Speed, Capacities and Weight	3
Accommodations	3
Hull and Deck Information	4
Engine Information	4
DETAILED INFORMATION	5
Interior Features	5
Galley	5
Electrical	5
Electronics	6
Deck & Hull	6
Fishing Equipment	6
Mechanical	7
Disclaimer	7
Exclusions	8
Disclaimer	8
PHOTOS	9
CONTACTS	17
Contact details	17
Telephones	17
Office hours	17
Address	17

SPECIFICATIONS

Overview

Owner says "Bring Offers!" Trades Considered!

Best Value for a 47 Convertible on the market! Maintained with an open checkbook and priced to be the next to sell.

Basic Information

Category: Sport Fisherman

Sub Category: Convertible

Model Year: 1996

Year Built: 1996

Country: United States

Vessel Top: Full / Tuna Tower

Fly Bridge: Yes

Cockpit: Yes

Dimensions

LOA: 47' 0" (14.33m)

Beam: 15' 6" (4.72m)

Max Draft: 4' 5" (1.35m)

Speed, Capacities and Weight

Cruise Speed: 26 Kts. (30 MPH)

Max Speed: 30 Kts. (35 MPH)

Displacement: 46300 Pounds

Water Capacity: 160 Gallons

Fuel Capacity: 700 Gallons

Accommodations

Total Cabins: 2

Total Heads: 2

Hull and Deck Information

Hull Material: Fiberglass

Engine Information

Engines: 2

Manufacturer: MAN

Model: Rebuilt 2008

Engine Type: Inboard

Fuel Type: Diesel

DETAILED INFORMATION

Interior Features

- Electronics Cabinet for Satellite Receivers & Stereo Equipment
- Carpet with sound deadening
- Valance
- LED interior lights
- Factory luxury decor package
- Beautiful teak joinery interior
- Ultra leather L shaped sofa w/ pull out bed
- Tan Carpet Runner with snaps
- Teak Coffee table
- Teak Dining table
- Accent pillows
- Silhouette blinds
- Drapery
- Accent mirrors
- Opening hatch over master
- (2) Open hatches in heads
- Cedar lined closets
- (2) VacuFlush heads
- Cruisair reverse cycle air conditioners
- Rod Storage Locker

Galley

- Kenmore Refrigerator w/ Freezer
- Princess 2-burner Electric Cooktop
- Garbage Disposal
- Convection Microwave
- Water Heater
- Pressurized Water system
- Corian Countertop
- Deep Molded Sink
- Teak Interior Cabinets
- Central Vacuum System

Electrical

- Generator 21 kw Phaser

- Dockside Electrical Cables
- Cablemaster shore power cord
- 120v outlet in Cockpit

Electronics

- Dual Garmin 7612 & HD Radar & Sonar
- Simrad Auto Complete Systems
- Fusion Stereo System
- Simrad Auto Pilot
- Speco Technologies Stern & Engine room tower cameras, shows on Garmin Screen and Salon TV w/ DVR recorder
- (2) Ritchie Compasses
- Speakers throughout
- Garmin GPS map 396
- (2) Video recorders (Salon/MSR)
- Icom ICM422 w/distress VHF
- KVH Sat Antenna
- Sirius Radio Receiver

Deck & Hull

- (3) New Bomar low profile hatches
- Simpson 3000 Electric Windlass
- Danforth Anchor w/ 200' rode and 30' chain
- Bow pulpit with rails
- Freshwater & saltwater Washdown System
- Navigation Lights
- (2) helm seats
- Pipe Welder's tower with fiberglass hardtop
- EZ2CY Eisenglass Front Curtain
- Forward Bench
- Cockpit Cushions
- Sunbrella helm and chair covers
- Blue cockpit LED light from tower to flybridge
- Underwater LED's
- Horn
- Weather seal installed and paint on port & starboard window frames

Fishing Equipment

- Cockpit Controls
- Reconditioned Release Fighting Chairs
- Fishbox freezer plates
- Rupp Outriggers
- Bait Freezer
- Cockpit Sink
- Insulated Fishbox w/ freezer plate, macerator and pump-out
- (2) molded-in Quartz lights
- Cockpit Sunshade
- Flybridge Rocket Launchers
- Live Well
- Transom Door
- (2) 12V Cockpit Electric Reel Outlets
- (7) Rod Holders

Mechanical

- Twin 680 MAN engines (Rebuilt 2008 by Ace Marine, 1,000 hour service since major overhaul 11/2017)
- Cruise 24 kts, WOT 29 kts
- Cruise Air AC in Stateroom
- Reversos quick connect bladder pump
- Reconditioned props
- Lube oil transfer system
- Engine Synchronizers
- Racor Fuel filters
- (2) Bilge blowers
- (3) Automatic bilge pumps
- Cockpit, bridge & tower controls
- Automatic Halon fire extinguishing system
- Hydraulic steering
- Bennett Trim Tabs
- Engine alarm and emergency stop
- Village Marine 600 gpd Watermaker
- Updated lighting LED

Disclaimer

The Company offers the details of this vessel in good faith but cannot guarantee or warrant the accuracy of this information nor warrant the condition of the vessel. A buyer should instruct his agents, or his surveyors, to investigate such details as the buyer desires validated. This vessel is offered subject to prior sale, price change, or withdrawal without notice.

Exclusions

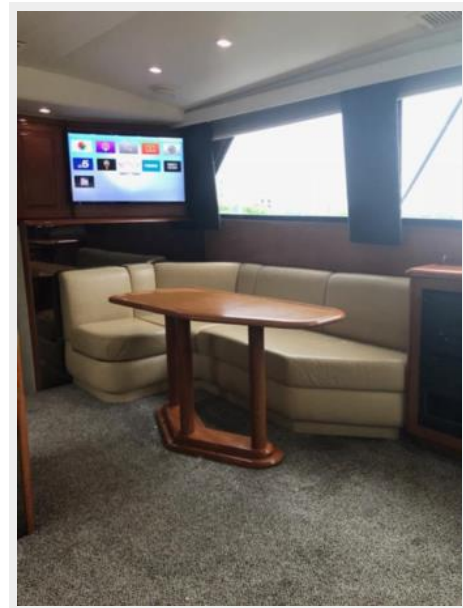
Owner's personal belongings.

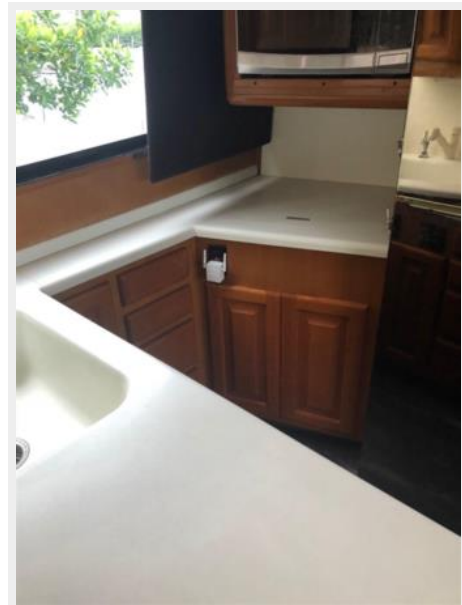
Disclaimer

The Company offers the details of this vessel or yacht in good faith but cannot guarantee or warrant the accuracy of this information nor warrant the condition of the vessel. A buyer should instruct his representatives, agents, or his surveyors, to investigate such details as the buyer desires validated. This vessel or yacht is offered subject to prior sale, price change, or withdrawal without notice.

PHOTOS

















CONTACTS

Andrey Shestakov, leading yacht broker of the sales department of Shestakov Yacht Sales Inc. Shestakov Yacht Sales Inc., the official representative of the Miami/Fort Lauderdale FL headquarters.

Contact details

Email: andrey@shestakovyachtsales.com

Web: shestakovyachtsales.com/en/

Telephones

USA: +1(954)274-4435

Office hours

Monday – Saturday: **9:00 - 21:00** EDT

Sunday: **closed**

Address



Harbour Towne Marina, 850 NE 3rd St,
STE 213, Dania, FL 33004