

## SERENGETI — LAZZARA



**Builder:** LAZZARA

**Year Built:** 1999

**Model:** Motor Yacht

**Price:** PRICE ON APPLICATION

**Location:** United States

**LOA:** 76' 0" (23.16m)

**Beam:** 19' 1" (5.82m)

**Min Draft:** 4' 6" (1.37m)

**Cruise Speed:** 22 Kts. (25 MPH)

**Max Speed:** 25 Kts. (29 MPH)

Our experienced yacht broker, Andrey Shestakov, will help you choose and buy a yacht that best suits your needs **Serengeti — LAZZARA** from our catalogue. Presently, at Shestakov Yacht Sales Inc., we have a wide variety of yachts available on our sale's list. We also work in close contact with all the big yacht manufacturers from all over the world.

If you would like to buy a yacht **Serengeti — LAZZARA** or would like help answering any questions concerning purchasing, selling or chartering a yacht, please call **+1(954)274-4435**

# TABLE OF CONTENTS

TABLE OF CONTENTS	2
SPECIFICATIONS	6
Overview	6
Basic Information	6
Dimensions	6
Speed, Capacities and Weight	6
Accommodations	7
Hull and Deck Information	7
Engine Information	7
DETAILED INFORMATION	8
Abaout Serengeti	8
Lazzara Highlights	8
Grand Salon	9
Dining	9
Galley and Dinette	9
Forward VIP Guest Suite/Crew	10
Master Stateroom	11
Port Guest Stateroom	12
Starboard Guest/Crew Stateroom	12
Pilothouse	13
Skylounge	13
Upper Deck	14
Fore Deck	14
Aft Deck	14
Sport Deck	15
Engine Room Mechanical	15
Electrical	16
Electronics and Navigational Equipment	16

Dinghy	17
Exclusions	17
Disclaimer	17
PHOTOS	18
Starboard Profile	18
Serengeti Stern	18
Grand Salon	18
Salon Looking Aft	18
Starboard Salon and Entertainment Center	18
Port Salon Looking Aft	18
Full Dining with Side Bar	19
Dining Area	19
Galley	19
Galley view 2	19
Dinette	19
Stairway to Forward Quarters	19
VIP Forward Guest/Crew	20
VIP view 2	20
VIP Forward Head	20
Office	20
Forward Laundry	20
Forward Laundry/Storage	20
Spiral Staircase leads to Master and Guest Staterooms	21
Master Stateroom	21
Port Seating and Dressers	21
Starboard Seating and Dressers	21
Master Entertainment Center	21
Master Head	21
Master Walk in Closet	22

Port Guest Stateroom	22
Guest Stateroom view 2	22
Guest Head	22
Crew/Guest Quarters	22
Crew/Guest Bunks	22
Converts to Double and Single Berth	23
Crew Guest Head	23
Central Vacuum System Under Spiral Staircase	23
Second Laundry in Aft Hallway	23
Steps to Skylounge Level	24
Pilothouse	24
Helm Controls	24
NEW ISIS System	24
Custom Recaro Helm Seats	24
Skylounge Seating	24
Aft Deck BBQ	25
Upper Aft Deck Lounge	25
Forward deck	25
Electric Windlass	25
Port Engine	25
Port Engine view 2	25
Starboard Engine	26
Starboard Engine view 2	26
Racor Filters and Fuel Manifold	26
Port Onan Generator	26
Sea Recovery Watermaker	26
ISIS/Electronic Control Boxes	26
DC Battery Panel	27
12 KW Shore Power Converters	27

---

Serengeti at the Dock	27
Med Mooring Passerelle	27
Ready for New Owner!!	27
CONTACTS	28
Contact details	28
Telephones	28
Office hours	28
Address	28

# SPECIFICATIONS

## Overview

**TWO BOAT OWNER HAS JUST MADE A DRASTIC \$200K PRICE REDUCTION!!  
AVAILABLE FOR IMMEDIATE SALE!** Serengeti has proven

herself as a true 'World Cruiser' having taken her owners throughout the Mediterranean and the Caribbean in luxury and comfort. Being one of only a handful of Cabriolet models made by Lazzara combined with the custom forward VIP Suite make her truly one of a kind!! Serengeti meets and exceeds all expectations. She recently returned from an extensive Mediterranean cruise. Low engine hours. All ship systems have been serviced and she has been thoroughly detailed. Routine Lazzara SeaChecks and ongoing maintenance show the quality of care and pride of ownership. Her custom 'Cabriolet' pilothouse skylounge with electronic opening windows offers the option for an open air lounge or air conditioned comfort. Additionally, she has 2 hydraulic passarelles for med mooring or dockside boarding. NEW ISIS (Integrated Ship Information System) offers state of the art systems monitoring! Twin 12 KW shore power converts to plug into European power. Serengeti's exotic motif is immediately apparent and continues throughout the boat. This gorgeous vessel is in bristol condition and equipped to take you anywhere.

## Basic Information

**Category:** Motor Yacht

**Model Year:** 1999

**Year Built:** 1999

**Country:** United States

## Dimensions

**LOA:** 76' 0" (23.16m)

**Beam:** 19' 1" (5.82m)

**Min Draft:** 4' 6" (1.37m)

**Clearance:** 25' 6" (7.77m)

## Speed, Capacities and Weight

**Cruise Speed:** 22 Kts. (25 MPH)

**Max Speed:** 25 Kts. (29 MPH)

**Displacement:** 89000 Pounds

---

## Accommodations

---

**Total Cabins:** 4

**Total Heads:** 4

---

## Hull and Deck Information

---

**Hull Material:** Fiberglass

---

## Engine Information

---

**Engines:** 2

**Manufacturer:** MTU

**Model:** 12V183TE93

---

# DETAILED INFORMATION

---

## About Serengeti

---

**Serengeti** has proven herself as a true 'World Cruiser' having taken her owners throughout the Mediterranean and the Caribbean in luxury and comfort. Being one of only a handful of Cabriolet models made by Lazzara combined with the custom forward VIP Suite make her truly one of a kind!! **Serengeti** meets and exceeds all expectations. She recently returned from an extensive Mediterranean cruise. Low engine hours. All ship systems have been serviced and she has been thoroughly detailed. Routine Lazzara SeaChecks and ongoing maintenance show the quality of care and pride of ownership. Her custom 'Cabriolet' pilothouse skylounge with electronic opening windows offers the option for an open air lounge or air conditioned comfort. Additionally, she has 2 hydraulic passarelles for med mooring or dockside boarding. NEW ISIS (Integrated Ship Information System) offers state of the art systems monitoring! Twin 12 KW shore power converts to plug into European power. **Serengeti's** exotic motif is immediately apparent and continues throughout the boat. This gorgeous vessel is in bristol condition and equipped to take you anywhere.

## Lazzara Highlights

---

Lazzara is the only company that supplies as standard equipment a diagnostic monitoring system. ISIS (Integrated Ship Information System) is a computer monitoring system that monitors and records 64 different functions such as engine temp, fluid levels, pressures. This monitoring system records a "snap shot" every one minute of the yachts functions. A user-friendly interface displays all of the functions at the helm. The ISIS is also used in conjunction with our SeaCheck program. The 76 Cabriolet Skylounge was created from the ground up. The design criteria of maximizing space, a contemporary sleek styling, exquisite interior appointments, unparalleled performance and ease of maintenance are what makes the 76 Cabriolet the most advanced yacht ever. There are 4 comfortable staterooms and 4-1/2 heads, sport and upper aft decks, bow sun pad, and the electrically retractable windows on the Skylounge.

- 21st Century innovations
- Breakthrough design, styling, and systems
- Spectacular performance and sea keeping ability
- Custom yacht quality finish in a production yacht
- Modern engineering throughout all systems
- Twin MTU 12V 183TE93 1150 HP engines
- Speed of 25 knots
- Twin storage pods at transom for spare props and scuba gear
- Four luxurious cabins and five heads
- Separate comfortable crew quarters
- Birdseye maple wood interior
- Custom country kitchen galley with dining area



- Separate dining room area at forward end of salon
- Large enclosed bridge with upper salon
- Complete electronics package
- Shipboard monitoring system with ISIS software programs
- Most complete standard equipment in the industry
- Table with varnished wooden inlaid top
- Built-in seating group, Sunbrella covered cushions
- Engine removal hatch
- Access, aft to sport transom deck, with handrail
- Aft deck bulwarks
- Access to flybridge with stainless ladder
- Single lever electronic engine controls and bow thruster control

---

## Grand Salon

---

- L-shaped upholstered sofa
- Curved upholstered settee with storage underneath
- Granite shelf behind sofa
- Glass oval coffee table
- Large storage cabinet portside
- Entertainment center with new 32" Samsung LED television, stereo and speakers
- Rope lighting above windows and under settees
- Levelor blinds
- Four panel doored dry bar and storage cabinet
- Sanyo 16 bottle wine cooler
- Stainless trimmed sliding glass door
- Spiral staircase leads to main accommodations

---

## Dining

---

- Round glass top dining table
- 6 cane back upholstered chairs
- Marble topped buffet and cabinet for china and crystal storage
- Pleated window shades
- Custom valances
- Indirect rope lighting
- Panasonic Hybrid System telephone

---

## Galley and Dinette

---

- L shaped wrap around Country Kitchen

- Raised Platform L-shaped upholstered settee with dinette table
- Black Galaxie Granite countertops
- Kitchen Aid Superba side by side refrigerator/freezer w/ ice/water dispenser
- Kitchen Aid 4 burner ceramic cook top
- Kitchen Aid built in convection microwave oven
- Kitchen Aid Superba full size dishwasher
- Kitchen Aid trash compactor
- Insta Hot water heater
- Black & Decker Spacemaker coffee maker
- Double stainless sink with Grohe spray faucet and water filter
- Abundant storage in beautifully lacquered cabinets and drawers
- Panasonic Hybrid telephone and intercom system
- Overhead mini spotlights
- Maple plank sole
- Port and starboard side access doors
- Day Head
- Microphor toilet
- Pedestal sink
- Mirrored medicine cabinet
- Black Galaxie granite tile sole
- Exhaust fan

---

## Forward VIP Guest Suite/Crew

---

This forward stateroom offers complete privacy for your guests or is perfect for a husband and wife crew with it's dedicated office and forward laundry.

- Birds eye maple office desk
- Four over head wall cabinets
- Panasonic Hybrid Telephone/Intercom system
- GE Spacemaker washer and dryer
- Queen size centerline berth
- (2) nightstands
- (2) banks of overhead cabinets
- Six drawer bureau
- Brass swing arm reading lamps
- Large drawers under berth
- Trimmed in Birds eye maple
- (2) cedar lined mirrored hanging lockers
- Huge Lexan overhead screened hatch
- Stereo speakers
- Built in television
- Cruiseair SMX II air conditioning control

- Carpeted sole in suite
- Marbled tile floor in head
- Custom vanity with a Crema Marafil marble countertop
- Grohe fixtures
- Mirrored panels above with built in medicine cabinets
- Microphore head
- Large lighted walk in shower with a tempered glass door
- Hand held or wall mount shower head
- Bench seat
- Four halogen mini lights overhead

---

## Master Stateroom

---

- Elegant master stateroom with ensuite head
- Centerline California King berth
- Custom bedding and designer pillows
- Birds eye maple
- Five drawers beneath berth
- Mirrored panel behind berth and laquered panel above
- Twin reading lights above berth
- (2) night stands with drawers
- Port settee with storage
- Port and starboard two drawer dressers
- His and Hers armoires
- Large walk in closet
- Built in entertainment center
- Stereo speakers
- Recessed lighting
- Recessed rope lighting at soffit
- Mini blinds
- Custom valances
- Duette blinds
- Cruisair SMX II air conditioning controls
- Six stainless opening ports
- Carpeted sole
- Private Master Head
- Shower has wrap around seat, tempered glass door, side lights
- Seven mini halogen spotlights
- Vanity has verde marble countertop
- His and Hers china sinks
- Generous storage with six drawers and four cabinets
- Eight foot paneled mirror houses two medicine cabinets
- Linen closet

- Microphor toilet in separate room
- Tiled sole
- Hallway at the foot of the spiral staircase leads to the guest staterooms
- Hoover central vacuum
- GE Spacemaker washer and dryer in aft laundry

---

## Port Guest Stateroom

---

- Walk around queen size berth
- Nightstands with two drawers each
- Two large storage drawers under berth
- Upholstered headboard with two reading lights
- Custom bedding
- Duette blinds, upholstered valance, rope lighting
- Lighted, cedar lined hanging locker with mirrored door
- Dresser
- Panasonic Hybrid system telephone
- JVC television
- Magnavox DVD
- JVC UX-C30 micro stereo component system
- Cruisair SMX II air conditioning controls
- Two ports
- Carpeted sole
- Port Guest Stateroom head
- Floating vanity with marble countertop, mirror above
- Medicine cabinet
- Walk in shower
- Microphor toilet
- Linen locker
- Tiled sole

---

## Starboard Guest/Crew Stateroom

---

- Day sofa converts to Over/under bunks with lower bunk pullman double
- Six drawer dresser
- Panasonic Hybrid System telephone
- Samsung television
- Panasonic DVD player
- Panasonic AM/FM receiver/CD player with two speakers
- Valance, rope lighting at soffit
- Mirrored hanging locker
- Recessed lighting

- Two s/s opening ports
- Duette blinds and rope lighting
- Cruisair SMX II air conditioning controls
- Four halogen mini spots
- Carpeted sole
- Starboard Stateroom/ Crew Head
- Vanity with marble countertop
- Walk in shower with tempered glass door
- Medicine cabinet
- Microphor toilet
- Linen locker
- Over head mini spots
- Tiled sole

---

## Pilothouse

---

- Fully instrumented console for operation including all controls and electronics
- Suite of electronics, navigational equipment and ships systems monitoring
- Viewsonic monitor for ISIS system
- Custom Recaro leather helm and companion chairs with electronic adjustment
- Vicon monitor to engine room and aft deck cameras
- Bow thruster controls
- Emergency bilge pump controls
- Orion Alert/Locate marine signal kit
- Controls for three electric windows
- JVC AM-FM CD player, overhead speakers
- U-Line refrigerator w/icemaker
- Custom shades for forward windows
- Storage cabinets under helm

---

## Skylounge

---

- L-shaped sofa to port electrically converts to berth
- Teak hi-low coffee table
- Wood storage cabinet port
- Starboard settee with built-in end table
- Large aft and three center windows electrically retract into the bridge sides
- Three large sliding windows port and starboard
- Sliding door leads to upper aft deck
- Panasonic intercom telephone

---

## Upper Deck

---

- L-shaped settee to port with storage
- Teak dining table
- Miele two burner electric grill and storage cabinet
- Eight person life raft
- Two arch floodlights
- Two overhead lights
- Freshwater washdown
- Custom hydraulic dinghy davits
- Courtesy lighting

---

## Fore Deck

---

- Maxwell 3500 Anchor Windlass
- SS anchor chute
- 75lb. polished stainless steel plow anchor
- Spare Fortress FX 55 anchor
- Oversized Bomar deck hatch
- (4) deck hatches for bosuns storage
- (28) deck lights in forward coaming
- ITT Jabsco search light
- Stainless bow rails
- Fresh water wash down
- International navigation lights
- Sunlounge w/ cushions, storage below
- Port and starboard entry doors
- Wide, walkaround side decks
- Teak decks

---

## Aft Deck

---

- Aft deck Micro commander engine controls
- Bow thruster controls
- Vicon aft facing camera
- (2) Maxwell 800lb. aft deck warping winches
- Sliding entry door to main salon
- Teak sole
- Extended overhead for shade has recessed lighting
- Port and starboard L-shaped settees with cushions and storage beneath
- Teak tables
- Storage lockers

- Besenzoni hydraulic passarelle with remote for dock boarding
- New Opacmare Hydraulic passarelle with remote for stern Med mooring

---

## Sport Deck

---

- 3 side EZ2CY Enclosure
- Integral Sport Deck swim platform
- Hinged Stainless gate
- Port and starboard storage pods
- (2) Maxwell 800 lb warping winches
- Pop up cleats for tender on swim platform
- Transom shower
- Engine room door w/ porthole
- Teak steps to aft deck

---

## Engine Room Mechanical

---

- Walk in engine room
- Twin MTU 12V183TE93's 1150hp each
- Full engine instrumentation panels, tach, oil pressure, water temp, gear oil pressure and temp for port and starboard engines
- Dual Racor 1000 fuel filters for each engine
- Two Mathers electronic engine control boxes
- Gyro Gale Pneumatic Dual Stabilizer system, four fins
- Electric dual prop bow thrusters and controls
- Engine room blower controls
- Engine start/stop
- Racor 500 fuel filters for generators
- 220 volt engine room blower system
- Engine block heaters
- Besenzoni hydraulic unit for passarelle
- (3) Auto/manual bilge pumps
- Vicon engine room camera
- Craftsman 8 drawer tool box
- Hynautic hydraulic power assist steering reservoir
- Hydraulic trim tabs recessed in hull
- 40 gallon water heater
- Central vacuum system
- Leeson oil change pump
- (4) Electric fuel prime pumps
- Sea Recovery 600 GPD watermaker
- Leeson raw water pump for watermaker

- Aquamet 22 main shafts
- Micro Commander clutch and throttle controls
- Acoustical and thermal insulation
- Glendinning shore power cord reel, port, starboard and aft outlets
- Port (w/vice) and starboard workbenches
- Panther air compressor for toilet systems
- Y valves for waste system
- Fireboy 200MA 20 pound Halon system
- Amerex dry chem fire extinguisher
- Kidde 10BC fire extinguisher,
- Panasonic Hybrid System telephone
- Fresh water spigots and hoses
- Diamond plate sole

---

## Electrical

---

- 20kw Onan generator w/hush cover 3269 hours port
- 20kw Onan generator w/hush cover 2813 hours starboard
- Charles C Charger 24 volt 60-amp battery charger
- Charles C Charger 24 volt 40-amp battery charger
- Charles C Charger 12 volt 20-amp battery charger
- Four 12 volt batteries for ship's service system
- Two 12 volt engine start batteries
- 12 volt circuit breaker panel
- Four Perko battery switches
- 100' 100 amp shore power cord

---

## Electronics and Navigational Equipment

---

- NEW ISIS computer
- Furuno NX-500 Navtex receiver Northstar 8700 GPS
- Trim tab switches
- Simrad 96 mile color radar
- Robertson AP20 autopilot
- Shipmate RS8300 VHF Radio
- RCA satellite television receiver
- Electronics power supply, tower style CPU
- Electronics circuit breakers
- Digital Marine electronics
- Nobeltec charting software
- Northstar 2201 "Black Box" GPS



---

## Dinghy

---

- 14' Novurania Hard bottom Inflatable (1999)
- Yamaha 50 hp 4-stroke (2003) outboard w/cover
- Fiberglass helm console with Yamaha engine controls, tachometer, speedometer, volts, temperature, fuel
- Helm bench seat w/cushion
- Padded seat forward
- 12 volt battery, battery cut-off switch, fuel filter, bilge pump
- Navigation lights
- Danforth anchor with 100' of 1/2" nylon rode
- Kidde 10BC dry chem fire extinguisher
- Two type 1 life jackets

---

## Exclusions

---

Owner's personal belongings.

---

## Disclaimer

---

The Company offers the details of this vessel or yacht in good faith but cannot guarantee or warrant the accuracy of this information nor warrant the condition of the vessel. A buyer should instruct his representatives, agents, or his surveyors, to investigate such details as the buyer desires validated. This vessel or yacht is offered subject to prior sale, price change, or withdrawal without notice.

# PHOTOS

**Starboard Profile**



**Serengeti Stern**



**Grand Salon**



**Salon Looking Aft**



**Starboard Salon and Entertainment Center**



**Port Salon Looking Aft**



**Full Dining with Side Bar**



**Dining Area**



**Galley**



**Galley view 2**



**Dinette**



**Stairway to Forward Quarters**





**VIP Forward Guest/Crew**



**VIP view 2**



**VIP Forward Head**



**Office**



**Forward Laundry/Storage**



**Forward Laundry**



### Spiral Staircase leads to Master and Guest Staterooms



### Master Stateroom



### Port Seating and Dressers



### Starboard Seating and Dressers



### Master Entertainment Center

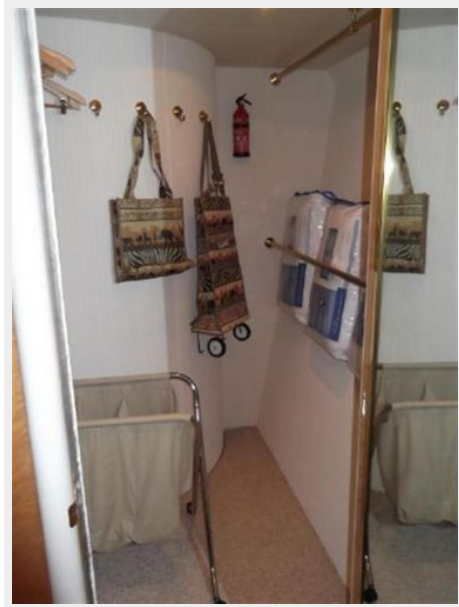


### Master Head





**Master Walk in Closet**



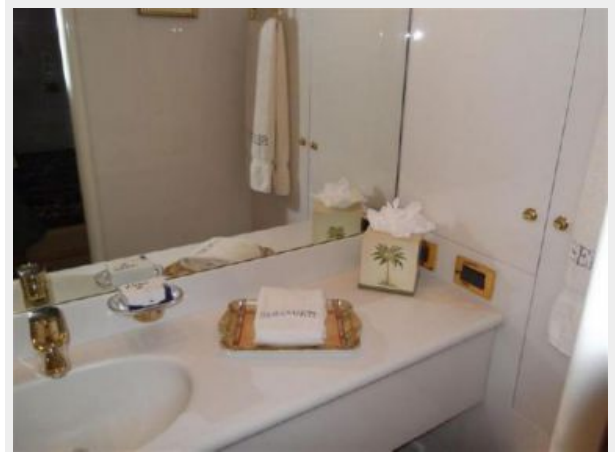
**Port Guest Stateroom**



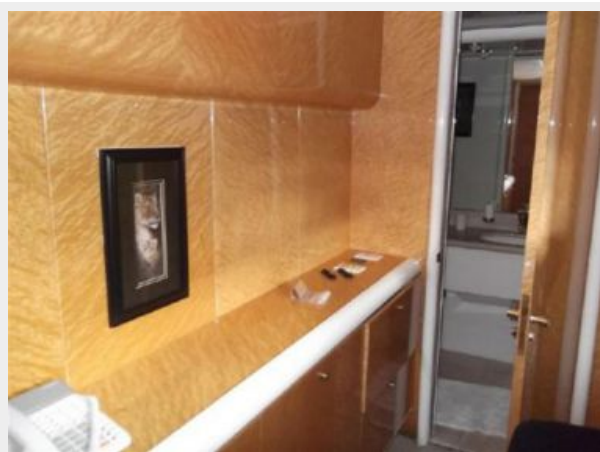
**Guest Stateroom view 2**



**Guest Head**



**Crew/Guest Quarters**



**Crew/Guest Bunks**



**Converts to Double and Single Berth**



**Crew Guest Head**



**Second Laundry in Aft Hallway**



**Central Vacuum System Under Spiral Staircase**



**Steps to Skylounge Level**



**Pilothouse**



**Helm Controls**



**NEW ISIS System**



**Custom Recaro Helm Seats**



**Skylounge Seating**





**Aft Deck BBQ**



**Upper Aft Deck Lounge**



**Forward deck**



**Electric Windlass**



**Port Engine**



**Port Engine view 2**



**Starboard Engine**



**Starboard Engine view 2**



**Racor Filters and Fuel Manifold**



**Port Onan Generator**



**Sea Recovery Watermaker**



**ISIS/Electronic Control Boxes**





**DC Battery Panel**



**12 KW Shore Power Converters**



**Serengeti at the Dock**



**Med Mooring Passerelle**



**Ready for New Owner!!**



# CONTACTS

---

Andrey Shestakov, leading yacht broker of the sales department of Shestakov Yacht Sales Inc. Shestakov Yacht Sales Inc., the official representative of the Miami/Fort Lauderdale FL headquarters.

## Contact details

---

Email: [andrey@shestakovyachtsales.com](mailto:andrey@shestakovyachtsales.com)

Web: [shestakovyachtsales.com/en/](http://shestakovyachtsales.com/en/)

## Telephones

---

USA: +1(954)274-4435

## Office hours

---

Monday – Saturday: **9:00 - 21:00** EDT

Sunday: **closed**

## Address

---



Harbour Towne Marina, 850 NE 3rd St,  
STE 213, Dania, FL 33004