

MI CAPRICO — TIARA



Builder: TIARA

Year Built: 1994

Model: Sport Fisherman

Price: PRICE ON APPLICATION

Location: United States

LOA: 36' 0" (10.97m)

Beam: 13' 9" (4.19m)

Max Draft: 3' 0" (0.91m)

Cruise Speed: 25 Kts. (29 MPH)

Max Speed: 29 Kts. (33 MPH)

Our experienced yacht broker, Andrey Shestakov, will help you choose and buy a yacht that best suits your needs **Mi Capricho — TIARA** from our catalogue. Presently, at Shestakov Yacht Sales Inc., we have a wide variety of yachts available on our sale's list. We also work in close contact with all the big yacht manufacturers from all over the world.

If you would like to buy a yacht **Mi Capricho — TIARA** or would like help answering any questions concerning purchasing, selling or chartering a yacht, please call **+1(954)274-4435**

TABLE OF CONTENTS

TABLE OF CONTENTS	2
SPECIFICATIONS	4
Basic Information	4
Dimensions	4
Speed, Capacities and Weight	4
Accommodations	4
Hull and Deck Information	4
Engine Information	5
DETAILED INFORMATION	6
Optional Equipment	6
Exclusions	6
Disclaimer	6
PHOTOS	7
1994 Tiara 3600 Convertible	7
Cockpit	7
Flip Down Aft Seat	7
Storage Tank In Cockpit	7
Aft Fish Box	7
Storage Tank In Cockpit	7
Helm On Flybridge	8
Front Windscreen With U Zips	8
Salon	8
Flybridge Forward Seating	8
Salon Sofa	8
Salon Sofa Starboard Convertible	8
Galley	9
Dinette Booth Style	9
Full Size Refrigerator/Freezer	9

Owners Suite Queen Berth	9
Head With Separate Shower	9
Bow	9
Engine Room	10
Shafts, Propellers, Rudders and Trim Tabs	10
Starboard Engine	10
Port Engine	10
CONTACTS	11
Contact details	11
Telephones	11
Office hours	11
Address	11

SPECIFICATIONS

Basic Information

Category: Sport Fisherman

Sub Category: Convertible

Model Year: 1994

Year Built: 1994

Country: United States

Dimensions

LOA: 36' 0" (10.97m)

Beam: 13' 9" (4.19m)

Max Draft: 3' 0" (0.91m)

MFG Length: 36' 8" (11.18m)

Speed, Capacities and Weight

Cruise Speed: 25 Kts. (29 MPH)

Max Speed: 29 Kts. (33 MPH)

Displacement: 18300 Pounds

Water Capacity: 85 Gallons

Fuel Capacity: 193 Gallons

Accommodations

Total Cabins: 2

Total Berths: 3

Total Heads: 1

Hull and Deck Information

Hull Material: Fiberglass

Engine Information

Engines: 2

Manufacturer: Caterpillar

Model: 3208

Engine Type: Inboard

Fuel Type: Diesel

DETAILED INFORMATION

Optional Equipment

- Caterpillar 3208 Diesel Engines 375 HP
- Westerbeke Generator
- Air Conditioning
- Black Anodized Double Spreaderf Outriggers
- Radar Ach With Convertible Top
- 3 Sided Front Wrap Around Enclosure With U Zips
- ACR 100 Remote Searchlight
- Maxwell Anchor Windlass With Remote Flybridge Switch
- Fender Holders (2ea)
- Oversize King Starboard Flybridge Ladder Steps
- Fish Box In Center and P and S Fiberglass Cockpit Storage Bins
- Hot And Cold Cockpit Shower
- Dinette Interior Layout
- Raymarine V8010 Color Depth Sounder
- Raymarine R41XX Raster Scan RADAR
- Raymarine 218 VHF Radio
- Raymarine SL 631 Chartplotter
- Rudder Angle Indicator
- Furuno GPS WAAS Navigator
- Raymarine ST 60+ Tridata
- Raymarine SmartPilot Auto Pilot
- Fire Boy Automatic/Manual Fire Extinguishing System
- TV In Salon
- LCD TV In Owners Stateroom

Exclusions

Owner's personal belongings.

Disclaimer

The Company offers the details of this vessel or yacht in good faith but cannot guarantee or warrant the accuracy of this information nor warrant the condition of the vessel. A buyer should instruct his representatives, agents, or his surveyors, to investigate such details as the buyer desires validated. This vessel or yacht is offered subject to prior sale, price change, or withdrawal without notice.

PHOTOS

1994 Tiara 3600 Convertible



Cockpit



Flip Down Aft Seat



Storage Tank In Cockpit



Aft Fish Box



Storage Tank In Cockpit



Helm On Flybridge



Front Windscreen With U Zips



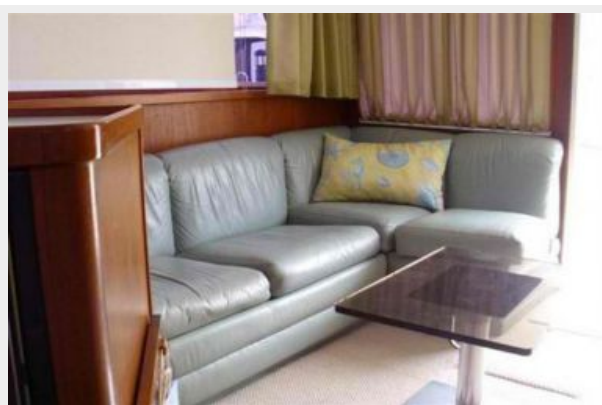
Flybridge Forward Seating



Salon



Salon Sofa



Salon Sofa Starboard Convertible



Dinette Booth Style



Galley



Full Size Refrigerator/Freezer



Owners Suite Queen Berth



Head With Separate Shower



Bow



Engine Room

Shafts, Propellers, Rudders and Trim Tabs



Starboard Engine



Port Engine



CONTACTS

Andrey Shestakov, leading yacht broker of the sales department of Shestakov Yacht Sales Inc. Shestakov Yacht Sales Inc., the official representative of the Miami/Fort Lauderdale FL headquarters.

Contact details

Email: andrey@shestakovyachtsales.com

Web: shestakovyachtsales.com/en/

Telephones

USA: +1(954)274-4435

Office hours

Monday – Saturday: **9:00 - 21:00** EDT

Sunday: **closed**

Address



Harbour Towne Marina, 850 NE 3rd St,
STE 213, Dania, FL 33004