

WINGS OF PEGASUS — SWEDEN YACHTS



Builder: SWEDEN YACHTS

Year Built: 1993

Model: Cruising Sailboat

Price: PRICE ON APPLICATION

Location: United Kingdom

LOA: 39' 0" (11.89m)

Beam: 12' 8" (3.86m)

Min Draft: 5' 8" (1.73m)

Cruise Speed: 6 Kts. (7 MPH)

Max Speed: 9 Kts. (10 MPH)

Our experienced yacht broker, Andrey Shestakov, will help you choose and buy a yacht that best suits your needs **WINGS OF PEGASUS — SWEDEN YACHTS** from our catalogue. Presently, at Shestakov Yacht Sales Inc., we have a wide variety of yachts available on our sale's list. We also work in close contact with all the big yacht manufacturers from all over the world.

If you would like to buy a yacht **WINGS OF PEGASUS — SWEDEN YACHTS** or would like help answering any questions concerning purchasing, selling or chartering a yacht, please call **+1(954)274-4435**

TABLE OF CONTENTS

TABLE OF CONTENTS	2
SPECIFICATIONS	3
Overview	3
Basic Information	3
Dimensions	3
Speed, Capacities and Weight	3
Accommodations	3
Hull and Deck Information	4
Engine Information	4
DETAILED INFORMATION	5
SPECIFICATION	5
Exclusions	17
Disclaimer	17
PHOTOS	18
CONTACTS	23
Contact details	23
Telephones	23
Office hours	23
Address	23

SPECIFICATIONS

Overview

Very nicely updated and serviced example of the extremely popular aft-cockpit Sweden Yachts 390. Easily handled by a short-handed crew and built to epically sound standards, there is very little not to like here.

Basic Information

Category: Cruising Sailboat	Model Year: 1993
Year Built: 1993	Country: United Kingdom

Dimensions

LOA: 39' 0" (11.89m)	LWL: 31' 6" (9.60m)
Beam: 12' 8" (3.86m)	Min Draft: 5' 8" (1.73m)

Speed, Capacities and Weight

Cruise Speed: 6 Kts. (7 MPH)	Max Speed: 9 Kts. (10 MPH)
Displacement: 16755.131912 Pounds	Water Capacity: 380 Gallons
Holding Tank: 80 Gallons	Fuel Capacity: 150 Gallons

Accommodations

Total Cabins: 3	Total Berths: 8
Total Heads: 1	

Hull and Deck Information

Hull Material: GRP

Deck Material: GRP

Hull Finish: Stainless Steel

Hull Designer: P Norlin / J Ostmann

Engine Information

Engines: 1

Manufacturer: Volvo

Model: 2003T

Engine Type: Inboard

Fuel Type: Diesel

DETAILED INFORMATION

SPECIFICATION

Construction:

RCD Status: The yacht is exempt from the essential safety requirements of Directive 94/25EC (Recreational Craft Directive).

Hull Construction:

- End grain balsa core sandwich using fibreglass mat and roving on both sides, giving a light, rigid and well-insulated hull.
- Balsa core is used from the toe rail to below the waterline. Solid laminate is used in high stress areas around the keel, mast foot and the joint between the two hull halves.
- Bottom reinforcements are longitudinal and transversal solid laminate design.
- White gelcoat with blue gelcoated stripes
- Blue waterline hull stripe
- Blue antifoul
- Hull epoxy treated - 2012

Deck & Superstructure Construction:

- The deck is moulded in fibreglass with end grain balsa core sandwich. Stress areas where winches and major deck fittings are fixed, are reinforced by replacing the balsa core with plywood, or by using backing plates or large diameter washers.
- The hull and deck is bonded together using polyester filler. The alloy toerail is then bolted through the hull and deck flange, using special sealing material.
- All main bulkheads are bonded to the hull and deck using glassfibre and polyester.
- Teak laid deck and coachroof with additional teak laid cockpit sole, cockpit seating and bathing platform
- Side decks overhauled – August 2013

Keel & Rudder:

- Wing keel with lead ballast externally bolted to hull using stainless steel bolts
- Balanced GRP spade-rudder, designed for comfortable cruising and easy manoeuvring supported by two ball bearings and a lower bronze bearing

Machinery:*Engine & Gearboxes:*

- Volvo 2003T 43hp, in-line three-cylinder turbo-charged marine diesel engine
- The engine is designed to work at low revs, putting the emphasis on low noise level and minimum vibration.
- High torque across the entire rev band and low emissions are other important characteristics.
- Freshwater cooling system via raw water intake and heat exchanger
- Volvo saildrive gearbox

Maintenance & Performance:

- Engine hours as at August 2013: estimated approx 900
- Engine serviced – Annually each year.
- Major engine service/overhaul Spring 2013 including rebuild of turbo
- Saildrive diaphragm replaced 2011
- Cruising speed: approx 6 knots
- Max speed: approx 8.5 knots

Propulsion & Steering:

- 2-bladed folding propeller -2007

- Rope cutter
- Chain & wire steering connection connected to autohelm.
- Edsen white powder-coated helm pedestal with large-diameter hide-covered stainless steel wheel
- Emergency steering gear

Electrical Systems:

Voltage Systems:

- 12vDC domestic system with 230vAC ring main from shorepower

Battery Banks:

- 1x 12v 87Ah engine start battery – 2011
- 4x 12v 87Ah service batteries joined in parallel supplying 348Ah @ 12v upgraded over standard 2x service battery configuration – 2011
- Pulstronik Battman battery monitoring system

Battery Chargers:

- Pallas 25Amp automatic battery charger powered through shorepower

Alternator:

- Engine mounted alternator – rebuilt 2013
- Sterling advanced alternator regulator

Shore Power:

- 230vAC 16 Amp shore supply

Other Electrical:

- 32w Spectraflex solar panel with regulator - 2011
- 230vAC ring main with sockets internally
- Main AC/DC control panel with analogue voltmeter
- 12vDC socket at chart table

Plumbing Systems:*Fresh Water & Water Heating System:*

- 12vDC pressurised water pump for supplying fresh water
- Hot water supply via engine calorifier and 230vAC immersion heater element in 22 litre hot water tank powered by shorepower

Bilge Pump:

- 12vDC electric bilge pump
- Manual bilge pump

Grey & Black Water:

- Grey water discharged directly overboard via gravity or 12vDC pump out
- Blackwater discharged directly overboard or to holding tank

Tankage:*General:*

- Analogue water & fuel level gauges

- Stainless steel deck fillers for fuel tanks and fresh water tank
- Pump out for waste tank.

Fuel:

- 150 litres (33 gallons) in one stainless steel fuel tank

Fresh water:

- 380 litres (84 gallons) in two stainless steel water tanks

Black water Holding:

- 80 litres (17.6 gallons) blackwater holding tank for heads

Navigation Equipment*At Helm:*

- Autohelm ST7002 autopilot control – 2009 (software upgraded 2013)
- Autohelm ST50 GPS repeater
- Autohelm ST50 Compass repeater
- Binnacle compass

At Companionway:

- Autohelm ST50 depth display
- Autohelm ST50 wind display
- Autohelm ST50 speed display
- Autohelm ST50 GPS display

At chart table:

- Furuno LCD radar with closed array scanner on mast
- Raymarine C90W widescreen colour chart plotter – 2010
- AIS receiver integrated to plotter - 2010
- Autohelm ST50 multi-repeater
- Clock & barometer on main bulkhead

Communications Equipment:

- Icom IC-M505 VHF with DSC – 2010
- Icom Commandmic handset at helm with SP-24 external speaker - 2010

Domestic Equipment:*Galley:*

- Optimus stainless steel gimbaled 3-burner stove with oven with Truma electronic gas solenoid switch
- Top-opening fridge/freezer box with 12vDC compressor
- Twin stainless steel sinks with hot & cold pressurised water supply
- Manual fresh & salt water supplies to galley

Heads/Showers:

- Manual marine heads
- Basins hot & cold water supply with shower attachment
- Mirrored storage, storage under sinks and additional fitted over heads.

Heating & Ventilation:

- Eberpsacher Aitronic D4 diesel-fired hot-air cabin heating with outlets throughout interior - 2005
- Dorade vents for accommodation cabins
- Opening deckhead hatches with skyscreens in saloon and forward cabin

Entertainment:

- JVC radio CD player with switchable speakers in saloon and in cockpit
- Amplified TV/FM aerial at masthead
- Retractable bracket for LCD TV (not supplied) in saloon locker with aerial and power connections for TV

Lighting:

- 12vDC halogen lights inset to deckhead with additional reading lights throughout
- Night lighting below decks

Accommodation:

Summary of Accommodation:

- Up to 8 berths in two double cabins plus saloon.
- Interior joinery in Mahogany and satin varnished throughout
- Varnished teak soleboards with holly inlays
- Matching varnished headlinings with mahogany battening
- Wooden battening to exposed hull sides
- Cloth curtains
- Blue patterned cloth upholstery in all cabins
- Solid handrails throughout the interior for easy movement offshore

- Grey speckled Corian countertops in galley, shower grate and shower seat in heads
- Centre table with storage and cupboards cut out for glasses.

Description of layout from forwards:

Forward Cabin:

Spacious double-berth utilizing full width of the cabin. Large sail stowage under berths, easily accessible via fold-up berth bottom boards. Shelves with dividers along hullsides to port and sb. Double hanging lockers, locker with shelves and drawers and a seat on port side, across from toilet cabin. 230v socket and heater outlet.

Heads:

Entire moulded compartment fitted between bulkheads. Two lockers with mirrored doors above wash basin unit. Two recessed mirrors in forward sections. Recess for toilet with fold-away extra seat. Corian shower grating, Shower drained by electric pump. Towel hangers. Door both to forward cabin and saloon.

Saloon:

L-shaped settee on both sides (water tanks below). Stowage behind backrests. Table with fold-down wings and built-in bar in fixed mid section. Drawers in aft end of table. Cabinets and bookshelves above sofas on both sides of saloon. Doors to forward cabin and toilet. Access to bilge, additional storage under cabin sole.

Galley:

L-shaped galley with Corian counter top. Large capacity icebox in GRP with Plexiglas dividers, drained to a separate sump. Drawer section, cuttingboard, dry food locker. Gas stove with three burners and oven. Double overhead cupboards. Waste basket and storage below sink.

Navigation Area:

Large navigation table with stowage. Moulded, detachable instrument panel (spare blank panel supplied) for electronic equipment on hinges for easy service access. Electrical master panel

included. Separate chart stowage space above instrument-panel. Adjustable navigation seat with storage under.

Aft Cabins:

Starboard cabin with generous single berth, access to hot water tank, stowage shelf along hullside, plus storage under hanging locker. Port cabin with double bed, access to water tank, seat with stowage under, and a wide hanging locker. Stowage shelf with doors along hullside. Doors from main saloon to each cabin.

Deck Equipment:

Rig:

- Selden Spars silver anodised aluminium alloy keel-stepped mast
- Masthead rig with two sets of in-line spreaders
- Selden rod vang
- Harken genoa furler (2008)
- Stainless steel wire standing rigging (2005)
- Running rigging replaced - 2007
- Stainless steel wire backstay with Navtec hydraulic adjustment
- Babystay
- Checkstays
- Removable inner forestay for mounting cutter jib
- Alloy rigging covers for shroud bases
- Single-line reefing system (reefs 1 & 2), 3rd line fitted for reef.
- Lazyjacks with stackpack bag (2006)
- Ball-bearing batten-car system
- Selden genoa tracks with additional cars.

- Selden aluminium spinnaker pole with associated equipment
- German mainsheet system led back to companionway
- Mainsheet track system on coachroof, adjustable from cockpit

Winches:

- 2x Lewmar 54ST 2-speed self-tailing manual primary winches
- 2x Lewmar 40ST 2-speed self-tailing manual secondary winches
- 2x Lewmar 44ST 2-speed self-tailing manual halyard winches

Sails:

- North Sails fully-battened mainsail – 1993
- Sander Sails Vektron 135% furling genoa - 2009
- North Sails hank-on staysail – 1993
- North Sails storm jib – 1992
- Nylon spinnaker
- Nylon cruising chute
- I= 16.2m, J=4.8m, P=14.9m, E=4.25m

General:

- Stainless steel guardrail stanchions with twin stainless steel wire guardwires and side-boarding gates
- Stainless steel pulpit and pushpit with teak step
- Teak grabrails on main superstructure coachroof
- Cockpit table
- Stainless steel folding ladder at bathing platform
- Deep starboard/port lockers with stainless steel grab rails/hangers

- Stainless steel dorade pulpits on coachroof
- Gas storage locker (drained – 3 x bottles) in centre.

Anchoring & Mooring Equipment:

- Lewmar 12v reversing anchor windlass
- Delta anchor with 60m chain and 40m warp
- Stainless steel stemhead fitting with single anchor rollers
- Mid-cleats for mooring
- Warps and fenders
- Removable shelf built into anchor locker for fender stowage

Covers, Canvas & Cushions:

- Blue canvas sprayhood with stainless steel frame and hide-covered grabrail - 2009
- Cockpit tent
- Cockpit seat cushions
- Pushpit cushions

Tender & Outboard:

- Avon Redcrest Inflatable dinghy
- Outboard bracket

Safety Equipment:

- Ocean Safety 6-man canister liferaft – serviced 2013
- Horsehoe buoy with light
- Danbuoy
- KIM MOB recovery sling

- Offshore flarepack - 2013
- Webbing safety line running complete length of hull on both sides.
- Blipper radar reflector
- Pulpit navigation lights with masthead tri-colour and anchor lights, deck flood lights

Fire-fighting equipment:

- Fire-extinguishers
- Fire blanket

Broker's Comments:

In her current ownership since 2004, WINGS OF PEGASUS has been lightly used for South Coast cruising from her berth in Lymington with the occasional cross-channel adventure. With just two owners prior to the present, she spent most of her winters under cover ashore with her rig out. Continually updated throughout all of her ownerships, she is a fantastic example of her type and a great opportunity to acquire one of these phenomenally well-built, extremely well-mannered and residually stable aft cockpit cruising yachts. There is very little not to like here.

Manufacturer's Comments:

A yacht in the luxury range: Clean, elegant lines together with generous space on deck and below makes this yacht an excellent representative of the Sweden Yacht philosophy.

The search for perfection in every detail is found in the quality of finish, the functional layout and the integrity of construction.

The 390 is designed for safe shorthanded sailing with clean deck lines and a comfortable efficient cockpit. It offers you three separate cabins in addition to the main salon and has a large, luxurious "bathroom". Also a proper nav station, well-functioning pantry and ample locker space throughout the boat.

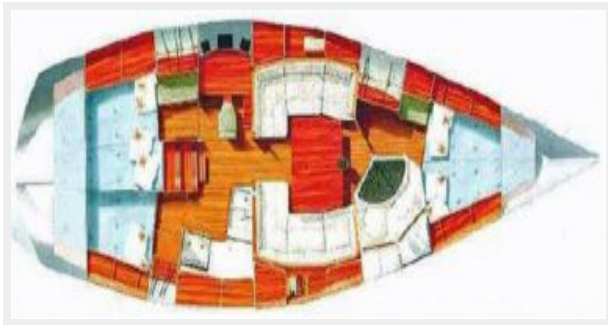
Exclusions

Owner's personal belongings.

Disclaimer

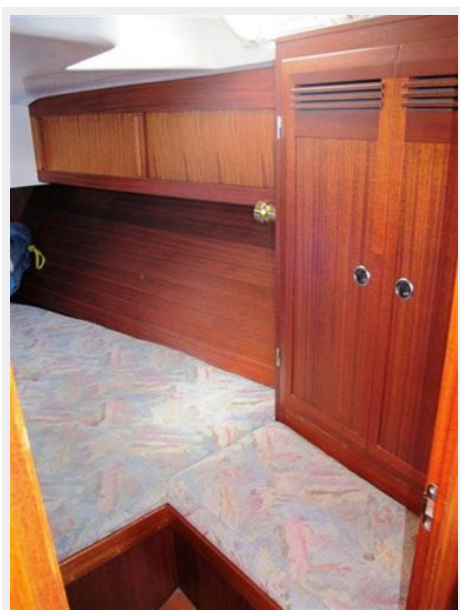
The Company offers the details of this vessel or yacht in good faith but cannot guarantee or warrant the accuracy of this information nor warrant the condition of the vessel. A buyer should instruct his representatives, agents, or his surveyors, to investigate such details as the buyer desires validated. This vessel or yacht is offered subject to prior sale, price change, or withdrawal without notice.

PHOTOS











CONTACTS

Andrey Shestakov, leading yacht broker of the sales department of Shestakov Yacht Sales Inc. Shestakov Yacht Sales Inc., the official representative of the Miami/Fort Lauderdale FL headquarters.

Contact details

Email: **andrey@shestakovyachtsales.com**

Web: shestakovyachtsales.com/en/

Telephones

USA: **+1(954)274-4435**

Office hours

Monday – Saturday: **9:00 - 21:00 EDT**

Sunday: **closed**

Address



Harbour Towne Marina, 850 NE 3rd St,
STE 213, Dania, FL 33004