

## BEAUTY QUEEN — GRADY WHITE



Судостроитель: GRADY WHITE

Длина общая: 30' 0" (9.14m)

Год постройки: 2007

Модель: Катер для спортивной рыбалки

Цена: **ЦЕНА ЯХТЫ ПО ЗАПРОСУ**

Местонахождение: United States

Купить **Beauty Queen — GRADY WHITE** а также выбрать подходящую вам яхту из нашего каталога яхт вам поможет опытный яхтенный брокер Андрей Шестаков. На сегодняшний день компания **Shestakov Yacht Sales Inc.** имеет большое количество яхт в собственном списке продаж, а также тесно сотрудничает со всеми крупными яхтенными производителями по всему миру.

Для того чтобы купить яхту **Beauty Queen — GRADY WHITE** а также проконсультироваться по любому вопросу связанному с покупкой, продажей, чартером яхт позвоните по телефону **+7(918)465-66-44**.

# ОГЛАВЛЕНИЕ

---

ОГЛАВЛЕНИЕ	2
ХАРАКТЕРИСТИКИ	3
Обзор	3
Основная информация	4
Размеры	4
Размещение	4
Корпус и палуба	4
Информация о двигателе	4
ПОДРОБНОЕ ОПИСАНИЕ	5
Standard Features	5
Cabin	5
Cockpit and Deck	6
Optional features	9
Исключения	9
Отказ от ответственности	9
ФОТОГРАФИИ	11
КОНТАКТЫ	24
Контактная информация	24
Телефоны	24
Время работы	24
Адрес	24

# ХАРАКТЕРИСТИКИ

## Обзор

2007 Grady White 305 Express. Twin 250 HP Yamaha Four Stroke Engines with 700 Hours. Every option offered and then some. New Rupp Riggers, additional rod holders on hardtop, also added to stern. Bow Thruster, Diesel Generator, 2 ICOM VHF, 2 Furuno NAV NET, Radar, FF/DF, Auto Pilot, Garmin Chartploter.....Loaded!

Air conditioning - 8000 BTU in cabin Bow thruster Cockpit shower Flat screen 19" LCD TV w/DVD player & audio/visual inputs Generator Hardtop top-mounted rod holders (6)

2 automatic bilge pumps (total 2600 GPH) Basic flotation

Bow rail - 316 grade stainless steel Cockpit toe rails Companion grab rail Fire extinguisher holder Nonskid fiberglass liner Self-bailing cockpit w/cockpit drains (6) Stainless steel through-hull fittings Cabin Accessory outlet - 12V Berth - aft double berth Berth - forward vee berth Forward hatch - low profile acrylic hatch w/screen & shade Galley - port side galley w/sink, Corian® cutting board & light Head - enclosed head area w/stainless steel sink, shower, lamp & VacuFlush® marine head w/10-gallon (37.9 l) holding tank & pump out Lighting - dome lights (4) Lighting - reading (2) Lighting - recessed (3) Lockable door w/screen & companionway hatch Microwave oven Mirror Refrigerator Rod storage - aft berth Stereo system w/AM/FM tuner, VHF receiver, MP3 auxiliary audio connections, Bluetooth®, remote control & fold down storage; speakers - cabin (2) & cockpit (2) Storage - galley cabinet & counter Storage - under berth compartments Storage nets Stove - electric glass top Table - cherry Teak & holly sole Water heater - 6-gallon (22.7 l), 120V Water tank - 32-gallon (121.1 l) freshwater Cockpit & Deck 100% hand laid hull & deck Accessory outlet - 12V (2) Anchor windlass w/remote switches at helm & windlass Batteries (4) Battery charger system Battery select switches w/extra batteries Bow pulpit w/roller

Cockpit bolsters Cockpit freshwater shower (recessed) (2) Cockpit lights - blue LED Compass Cooler - 73-qt. (69.1 l) port insulated cooler w/ob drain Deck hardware - 316 grade stainless steel through-bolted Dockside power w/galvanic isolator Drink holders - stainless steel (14) Factory engine pre-rigging Fighting chair reinforcement Fish box - 304-qt. (287.7 l) aft insulated fish box w/ob drain Footrests - helm & companion (adjustable) Freshwater level indicator Fuel capacity - 268 gallons (140-gallon tank, 128-gallon tank) (1014 l) Hardtop w/flush mount radio box, storage nets, spreader lights, speakers (2), rod holders (6), outrigger plates & drop, front and side curtains (navy or ivory) Hydraulic trim tabs w/indicator & retractor Integrated outboard mounting system w/swim platform & ladder International lighting Livewell - 32-gallon (121.1 l) starboard insulated raw water livewell w/light, full column distribution inlet & ob drain (1100 GPH pump) (4164 LPH) Rod holders (4) Rod storage racks - horizontal (6) Rubrail - high density PVC w/stainless steel insert Seating - companion bench seat Seating - Deluxe II vertically and horizontally adjustable helm chair Seating - fold away aft bench seat w/cushion Seating - port cooler cushion w/footrest Steering - hydraulic tilt Steering wheel - 316 grade stainless steel Stern eyes - heavy-duty 316

stainless steel Storage - electromechanically operated electronics enclosure

Storage - forward anchor locker w/rode storage Storage - lockable storage under companion seat  
Transducer mounting flats Transom door - fiberglass Washdown - freshwater Washdown -  
pressurized raw water w/hose (forward & aft) Windshield - ventilated tempered glass windshield  
Windshield washer - freshwater Windshield wiper

## Основная информация

---

**Тип судна:** Катер для спортивной  
рыбалки

**Подкатегория:** Express

**Модельный год:** 2007

**Год постройки:** 2007

**Страна:** United States

**Верх:** Hardtop

## Размеры

---

**Длина общая:** 30' 0" (9.14m)

## Размещение

---

**Всего кают:** 1

**Всего ком. состава:** 1

## Корпус и палуба

---

**Материал корпуса:** Fiberglass

## Информация о двигателе

---

**Двигатели:** 2

**Производитель:** Yamaha

**Модель:** 250HP Four Stroke

**Тип двигателя:** Outboard

**Тип топлива:** Gas

---

# ПОДРОБНОЕ ОПИСАНИЕ

---

## Standard Features

---

### Safety

2 automatic bilge pumps (total 2600 GPH)  
(9842 LPH)

Basic flotation

Bow rail - 316 grade stainless steel

Cockpit toe rails

Companion grab rail

Fire extinguisher holder

Nonskid fiberglass liner

Self-bailing cockpit w/cockpit drains (6)

Stainless steel through-hull fittings

## Cabin

---

Accessory outlet - 12V

Berth - aft double berth

Berth - forward vee berth

Forward hatch - low profile acrylic hatch

w/screen & shade

Galley - port side galley w/sink, Corian®

cutting board & light

Head - enclosed head area w/stainless steel

sink, shower, lamp & VacuFlush® marine head

w/10-gallon (37.9 l) holding tank & pump out

Lighting - dome lights (4)

Lighting - reading (2)

Lighting - recessed (3)

Lockable door w/screen & companionway hatch

Microwave oven

Mirror

Refrigerator

Rod storage - aft berth

Stereo system w/AM/FM tuner, VHF receiver,  
MP3 auxiliary audio connections, Bluetooth®,  
remote control & fold down storage; speakers

- cabin (2) & cockpit (2)

Storage - galley cabinet & counter

Storage - under berth compartments

Storage nets

Stove - electric glass top

Table - cherry

Teak & holly sole

Water heater - 6-gallon (22.7 l), 120V

Water tank - 32-gallon (121.1 l) freshwater

---

## Cockpit and Deck

---

100% hand laid hull & deck

Accessory outlet - 12V (2)

Anchor windlass w/remote switches at helm

& windlass

Batteries (4)

Battery charger system

Battery select switches w/extra batteries

Bow pulpit w/roller

Cockpit bolsters

Cockpit freshwater shower (recessed) (2)

Cockpit lights - blue LED

Compass

Cooler - 73-qt. (69.1 l) port insulated

cooler w/ob drain

Deck hardware - 316 grade stainless

steel through-bolted

Dockside power w/galvanic isolator

Drink holders - stainless steel (14)

Factory engine pre-rigging

Fighting chair reinforcement

Fish box - 304-qt. (287.7 l) aft insulated

fish box w/ob drain

Footrests - helm & companion (adjustable)

Freshwater level indicator

Fuel capacity - 268 gallons (140-gallon

tank, 128-gallon tank) (1014 l)

Hardtop w/flush mount radio box, storage

nets, spreader lights, speakers (2), rod

holders (6), outrigger plates & drop, front

and side curtains (navy or ivory)

Hydraulic trim tabs w/indicator & retractor

Integrated outboard mounting system w/swim

platform & ladder

International lighting

Livewell - 32-gallon (121.1 l) starboard

insulated raw water livewell w/light, full

column distribution inlet & ob drain (1100

GPH pump) (4164 LPH)

Rod holders (4)

Rod storage racks - horizontal (6)

Rubrail - high density PVC w/stainless

steel insert

Seating - companion bench seat

Seating - Deluxe II vertically and

horizontally adjustable helm chair

Seating - fold away aft bench seat w/cushion

Seating - port cooler cushion w/footrest

Steering - hydraulic tilt

Steering wheel - 316 grade stainless steel

Stern eyes - heavy-duty 316 stainless steel

Storage - electromechanically operated

electronics enclosure

Storage - forward anchor locker

w/rode storage



Storage - lockable storage under

companion seat

Transducer mounting flats

Transom door - fiberglass

Washdown - freshwater

Washdown - pressurized raw water w/hose

(forward & aft)

Windshield - ventilated tempered

glass windshield

Windshield washer - freshwater

Windshield wiper

## Optional features

---

Air conditioning - 8000 BTU in cabin

Bow thruster

Cockpit shower

Flat screen 19" LCD TV w/DVD player &

audio/visual inputs

Generator

Hardtop top-mounted rod holders (6)

## Исключения

---

При продаже яхты исключаются личные вещи владельца.

## Отказ от ответственности

---

Компания предоставляет описание судна или яхты добросовестно, но не может гарантировать точность этой информации, а также не ручается за техническое

состояние. Покупатель должен проинструктировать своих агентов или оценщиков исследовать представленную информацию более подробно, по собственному желанию. Продажа судна или яхты, изменение цены или снятие с продажи будет происходить без предварительного уведомления.

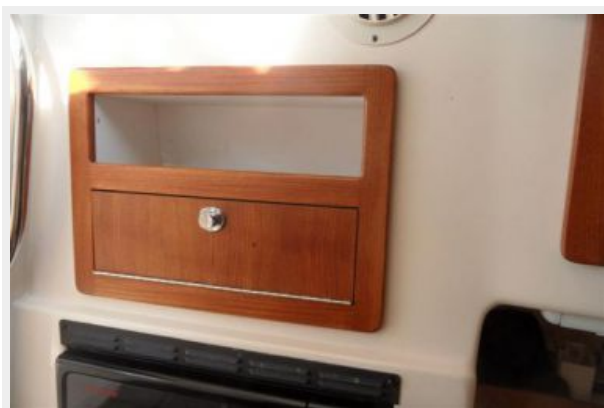
# ФОТОГРАФИИ

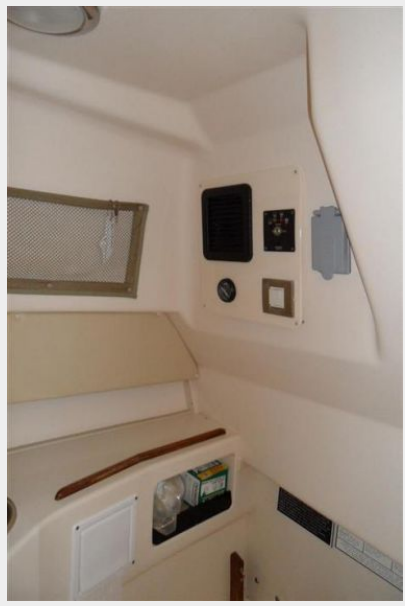










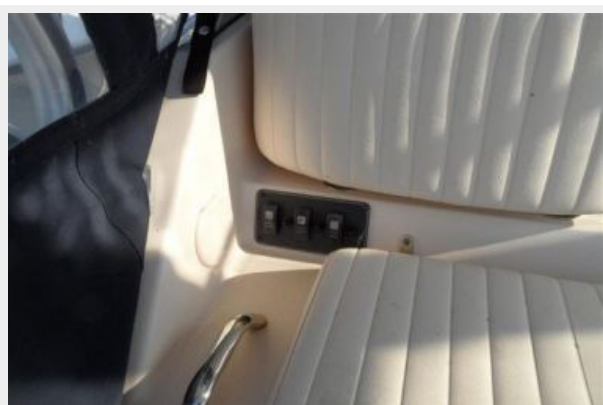














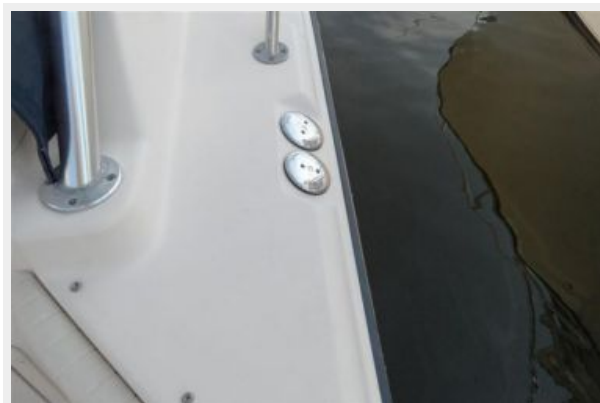












# КОНТАКТЫ

Андрей Шестаков (Andrey Shestakov) – ведущий яхтенный брокер отдела продаж яхт и судов компании Shestakov Yacht Sales Inc. Официальный представитель Shestakov Yacht Sales Inc. для русскоговорящих клиентов в центральном офисе компании в Майами/Форт Лодердейл/Флорида/США.

## Контактная информация

Email: [andrey@shestakovyachtsales.com](mailto:andrey@shestakovyachtsales.com)

Web: [shestakovyachtsales.com](http://shestakovyachtsales.com)

## Телефоны

Краснодарский край: **+7(918)465-66-44**

США, Майами, Флорида: **+1(954)274-4435**

## Время работы

Понедельник – Суббота: **9:00 - 21:00**  
EDT

Воскресенье: **Закрито**

## Адрес



Harbour Towne Marina, 850 NE 3rd St,  
STE 213, Dania, FL 33004