

SHOW BOAT — HATTERAS



Судостроитель: HATTERAS

Год постройки: 2009

Модель: Моторная яхта

Цена: **ЦЕНА ЯХТЫ ПО ЗАПРОСУ**

Местонахождение: United States

Длина общая: 72' 0" (21.95m)

Ширина: 20' 2" (6.15m)

Макс. осадка: 5' 4" (1.63m)

Крейс. скорость: 17.37952484 Kts. (20 MPH)

Макс. скорость: 21.72440605 Kts. (25 MPH)

Купить **SHOW BOAT — HATTERAS** а также выбрать подходящую вам яхту из нашего каталога яхт вам поможет опытный яхтенный брокер Андрей Шестаков. На сегодняшний день компания **Shestakov Yacht Sales Inc.** имеет большое количество яхт в собственном списке продаж, а также тесно сотрудничает со всеми крупными яхтенными производителями по всему миру.

Для того чтобы купить яхту **SHOW BOAT — HATTERAS** а также проконсультироваться по любому вопросу связанному с покупкой, продажей, чартером яхт позвоните по телефону **+7(918)465-66-44**.

ОГЛАВЛЕНИЕ

ОГЛАВЛЕНИЕ	2
ХАРАКТЕРИСТИКИ	4
Основная информация	4
Размеры	4
Скорость, вместимость и масса	4
Размещение	4
Корпус и палуба	4
Информация о двигателе	5
ПОДРОБНОЕ ОПИСАНИЕ	6
Accommodations	6
Hull & Deck	7
Engine Room	7
Fly Bridge	9
Electronics	10
Salon & Galley	11
Исключения	12
Отказ от ответственности	12
ФОТОГРАФИИ	13
Bow Area	13
Manufacturer Provided Image	13
Galley Seating Area	13
Salon and Bar	13
Salon	13
Salon	13
Stairs to Staterooms	14
Dining Table	14
Dining Table	15
Aft Deck Settee	15

Aft Deck Dining Table	15
Outdoor Walk Around	16
Aft Deck	16
Rich Wood Buffet Storage	16
Entryway	16
Outdoor Walk Around	17
Engine Room	17
Aft Deck Stairs	17
General Arrangement	22
Manufacturer Provided Image	22
КОНТАКТЫ	23
Контактная информация	23
Телефоны	23
Время работы	23
Адрес	23

ХАРАКТЕРИСТИКИ

Основная информация

Тип судна: Моторная яхта

Модельный год: 2008

Год постройки: 2009

Страна: United States

Размеры

Длина общая: 72' 0" (21.95m)

Ширина: 20' 2" (6.15m)

Макс. осадка: 5' 4" (1.63m)

Скорость, вместимость и масса

Крейс. скорость: 17.37952484 Kts. (20 MPH)

Макс. скорость: 21.72440605 Kts. (25 MPH)

Водоизмещение: 160000 Pounds

Вместимость воды: 300 Gallons

Вместимость сточного бака: 350 Gallons Объем топливного бака: 2200 Gallons

Размещение

Всего кают: 5

Всего ком. состава: 4

Каюты экипажа: 1

Койки экипажа: 1

Спальных мест экипажа: 2

Комм. состав экипажа: 1

Корпус и палуба

Материал корпуса: Fiberglass

Информация о двигателе

Двигатели: 2

Производитель: Caterpillar

Модель: C-32

Тип двигателя: Inboard

Тип топлива: Diesel

ПОДРОБНОЕ ОПИСАНИЕ

Accommodations

As you walk onboard **Show Boat** you will immediately be impressed with her spacious aft deck. This is a great spot for sunrise breakfasts and evening dinners with plenty of space. The Hatteras product development team created an interior arrangement fit for royalty and their entire retinue.

Lower Deck

A wide staircase leads to the staterooms below and offers access to a large storage locker for supplemental supplies. Concealed under the staircase lie a side-by-side washer and dryer, which are accessible from the lower companionway.

Fit For A King

Owners enjoy a full-beam master suite featuring a king-sized berth, walk-in closet lined in cedar, dressers and nightstands to port and starboard, and an entertainment center featuring a 27-inch flat-screen TV. A sitting area provides room to relax, while six oversize port lights allow ambient light to fill the cabin. Various options let the owner outfit the master with an office or additional hanging lockers. The private head features stone flooring and counter tops, along with dual sinks. An optional his-and-hers head with center line shower and/or tub is also available.

3 Guest Staterooms

Similar to other Hatteras models, the bow stateroom on the 72 features a walk-around queen berth with cedar-lined storage below and a 20-inch flat-screen TV. Storage is abundant, with a cedar-lined hanging locker and hull-side cabinets to port and starboard. The third guest stateroom also features a walk-around queen berth and cedar-lined storage. Nightstands on either side provide storage, as does a full cedar-lined hanging locker. A port light adds ambient light and counter tops are granite. Situated to starboard, the optional fourth stateroom offers over/under bunks as well as a closet and nightstand (this is in lieu of the lounge area in the master suite).

- AlexSeal Paint

Optional Aft Crew Or VIP Stateroom

Owners can access the engine room through a discreet staircase in the salon, or through a watertight door on the swim platform. Either entry leads to a utility room that can be equipped with an optional crew quarters or VIP stateroom. With the crew quarters, you get a queen bunk, closet, nightstand, TV, and “wet head” with shower. The VIP stateroom option offers a queen bed with private head and separate shower, as well access stairs from the salon that lead directly into the engine room so the crew can reach working components without disturbing guests.

Hull & Deck

The difference between Hatteras and other boat manufacturers lies in the art of construction. While it may look traditional above the waterline, our 72 motor yacht features a fully resin-infused hull that advances the science of structural integrity and creates a superior ride for greater offshore confidence.

Inside, this globetrotter sports a 284-square-foot showroom salon finished to the highest standards and offering owners multiple layouts to choose from based on how they intend to spend their leisure time. Standard accommodations include three staterooms, three private heads, an aft crew quarters, along with an optional fourth stateroom and an aft VIP guest room. These are among the most flexible sleeping arrangements of any vessel in our fleet.

Our 72 motor yacht is made to go places; which explains why she utilizes ultramodern components and construction techniques and incorporates hospitable exterior spaces that can host a crowd of people comfortably for the long haul.

Resin-Infused Hull

The 72 features a fully resin-infused hull, rather than one constructed from layers of hand-laid fiberglass. Resin-infusion technology — the process of impregnating fiberglass with resin instead of spraying or rolling it on — produces a more uniform hull thickness and results in the most ideal glass-to-resin ratio. This creates a hull that is stiffer (because there are no voids in the fiberglass) and weighs significantly less (because of the lowered resin content). At the same time, resin infusion allows for a more precise fit of bulkheads, stringers, and other components for increased strength and durability.

Alfresco Aft Deck

A large aft deck with molded seats and a wood table make an ideal location to relax or enjoy an alfresco meal. This area also allows easy access to the large “sport deck” swim platform and the high-flying bridge deck above.

Quality Deck Details

To port and starboard, 12-inch side decks lead safely forward, making the 72 easier to handle by an owner-operator. Cleats are recessed into the bulwark for a clean exterior profile. Forward, a large sun pad that converts into a seat is molded into the main deck. And thanks to a windlass recessed into a well that drains overboard, the foredeck will stay clean throughout the day.

Exclusions: Tender and Lamp in Salon

Engine Room

The engine room provides for easy access to equipment and the bilges are painted with a high gloss urethane paint for ease of cleaning. A forced air induction system draws cooling air for the engine room from the outside reducing saltwater intrusion into the engine room.

Attention to detail is evident in the many systems as you'll find rudder shelves made of pultruded fiberglass which is an incredibly dense, strong and stiff material that will not corrode, rot, flex or break under strenuous use. Simply look at the size of the running gear and pay special attention to the duplicated systems throughout the boat.

- Water manifold with centralized shut-off valve for sinks and showers
- Pultruded fiberglass rudder shelf with stainless-steel rudder tie bar
- AC fluorescent lights
- DC lights
- DC ventilation blower
- Twin diesel, freshwater-cooled main engines with electrically controlled marine gears, neutral interlocks, exhaust silencers, engine hour meters, alternators, fuel filters and seawater strainers
- FM200 fixed fire extinguishing system for engine compartment with automatic and remote manual controls, plus audible and visual discharge signals
- Two 30 kW freshwater-cooled electronic Quiet Diesel CAT generators with shock mounts, sound enclosure, seawater strainer, remote start, fuel/water separator, hour meter and water lift muffler, Variable-speed air induction fans with duct on inboard face of bulwark for engine combustion air, two 15-inch vaneaxial fan pressure and temperature controlled polyethylene water lines
- Electric fuel transfer system with filtration and dry tank protection for pump
- Freshwater fill hose for engines and generators
- AC compressed air system with air line and regulator
- Dockside water inlet with pressure regulating valve and Hatteras patented quick disconnect
- 24-volt DC bilge and sump pumps, two at 2000 gph and six at 3700 gph, with heavy-duty float switches and protective guards
- Bronze/chrome ball-valves through-bolted in solid fiberglass on all underwater through-hull fittings with electrical bonding throughout
- Pressurized 230-volt AC freshwater pump with central charcoal filter
- U.L. Marine listed fiberglass fuel tanks constructed from fire-retardant resin with bronze fittings and coated with fire-retardant paint
- Fiberglass water tanks, constructed with bronze fittings and materials which comply with the requirements of Title 21 for food and drugs
- Sewage holding tank with 230-volt AC sewage pump, plumbed for dockside pump-out with 3/4 full display and alarm as part of systems monitor programmable logic controller
- 110-volt AC oil changing system for engines, generators and gears with Hatteras patented quick disconnect
- U.L. Marine listed fuel filter/water separator, generators
- Sealed shower sump, one each
- U.L. Marine approved fuel filters/water separators with dual filters, engines

- Electric fuel priming pumps, 24-volt DC, engines
- AC distribution panel
- DC distribution panels
- Painted polyurethane engine room and bilges with rubber deck mat between engines
- Air conditioning compressors and pumps
- United States Coast Guard type A1 U.L. Marine approved fuel lines
- Discharge sea chests
- 1" stainless-steel steering tie bar with pivoting self-aligning ball joint connection at all cylinder and tie bar connections
- Insulation in deck
- Gray water tanks with 230-volt AC sewage pump, plumbed for dockside pump-out with 3/4 full display and alarm as part of systems monitor
- Electric fuel level gauges
- Pick-up sea chests
- Digital monitoring for main engines in battery panel
- Start and stop switches and hour meter
- Stabilizer System, upgrade
- Air conditioning back up water pumps, plumbed and wired*
- Watermaker – install through hulls and wire for later installation*
- Freshwater AC back up pump

Fly Bridge

Full-Featured Flybridge

The 174-square-foot flybridge, accessed from either the aft deck or the galley, features a centerline helm served by two adjustable Stidd chairs. The electronics suite includes a GPS/chart plotter, VHF radio, autopilot and depth and temperature indicator — all the necessary navigation aids. A bar with three stools, refrigerator, and ice maker abaft the helm creates a casual entertainment area and an optional electric grill is available in the starboard cabinet. Molded fiberglass seating farther aft allows for easy conversation and includes cavernous storage beneath. The open bridge features an arch for mounting antennas and radar.

There are two access stairwells to the open fly bridge from either the aft deck or the galley. The 174-square-foot deck features a center line helm station and the optional Hatteras Ethernet Systems Monitor - which is an upgrade, as well as a double grill on the fly bridge boat deck, the integrated Hatteras hardtop with full glass forward windshield with wipers and electric sun roof.

Molded fiberglass seating allows for easy conversation and plenty of storage underneath situated around a fly bridge black galaxy granite table with dual fixed pedestals. A key bar with black galaxy top and three stools, refrigerator and ice-maker provide a comfortable entertainment area for owner and guests. This boat features a teak deck under the integrated hardtop. Aft, a 1600 Steelhead davit provides easy access for the 430 Novurania.

- 187-square-foot boat deck
- Molded fiberglass bridge, teak upgrade floor
- Welded and polished stainless-steel grab rails and stanchions
- Tinted tempered glass windshield - custom wood
- Control station with all necessary switches and dimmable lighted instruments
- Painted (polyurethane) aluminum radar arch with masthead light and anchor light
- Compass with dimmable light
- Single-lever clutch and throttle controls (electronic) with emergency back-up and engine synchronization
- Hydraulic power-assisted steering
- Adjustable helmsman and companion seat with covers (Pompanette)
- Lounge with vinyl-covered polyfoam cushions, covers and storage below, with access to boat deck
- Hinged door to galley
- Audio system control, LCD keypad and a pair of waterproof Pioneer speakers.
- Wet bar with sink, refrigerator, icemaker and three barstools, top is black galaxy with square eased edge UPGRADE
- Stairs from galley to bridge
- Molded-in stairs to aft deck with hatch cover, teak UPGRADE
- DC low-level lights
- Neutral interlock switches allowing engine to start in neutral only
- Fly bridge – double grill UPGRADE
- Davit, Steelhead 1500 lb, UPGRADE
- Black Galaxy granite fly bridge table with dual fixed pedestals, UPGRADE
- Air conditioning – fly bridge UPGRADE
- Integrated hardtop w/fixed forward windshields, wipers and washers, panels port and starboard at side openings UPGRADE
- Strataglass enclosure across aft, electric defogger, radar mast for single radar and single satellite UPGRADE
- Open bridge bar top and table top – Black Galaxy Granite UPGRADE
- Custom décor – flybridge bar faucet, bar stool upholstery, cushions UPGRADE
- Receptable outlet UPGRADE
- Bow deck – Sun pad cushion upholstery (custom) UPGRADE
- Freshwater washdown quick disconnect, boat deck UPGRADE
- Novurania 430 DL dingy with chocks and tie downs UPGRADE

Electronics

- Icom M604b VHF radio & antenna & mount
- Northstar 6100i gps/chartplotter & mount
- Simrad autopilot AP-28
- Furuno RD30 digital depth & TH transducer
- (2) KEP 15" sunlight monitor

- Furuno NavNet 3D 72nm radar w/6" array
- (2) Furuno Nav Net 3D black box plotter
- Furuno Sirius weather receiver
- (2) Furuno black box WAAS GPS sensor
- Furuno NavNet 3D ethernet hub
- (2) Speco 40 watt hailer horn
- Icom m604b VHF radio
- Furuno rd30 remote depth display & mount
- Airmar d/t bronze thru-hull transducer
- KVH TracVision M7 SAT TV system
- (3) each DirectTV HD receivers w/remote rf kits & power supplies
- KVH HD converter & control switch
- KVH DirectTV 12v RF sat receiver
- KVH Tracphone 252 mini-m sat phone & mount
- Panasonic 2-line phone & extra handset

Salon & Galley

Showroom-Style Salon

This elegant refuge for owners and guests features a large settee with storage beneath and a clear view of the 42-inch flat-screen TV. Opposite is an area designed to house an optional sunken bar with a sink and refrigerator. Cleverly concealed behind this bar is discreet access to the engine room and aft stateroom below. Forward, a formal dining table seats six comfortably; china and glass storage, as well as a large buffet sideboard, are close at hand.

Galley & Country Kitchen

- SubZero Full Sized Refrigerator
- SubZero Wine Cooler
- Sharp microwave, Whirlpool convection oven
- Whirlpool washing machine
- Central Vacuum

One step up from the salon, the galley area has a walk-in pantry to starboard (part of this space can be modified to incorporate an optional day head on the main level). The galley itself features enormous granite counter tops, double stainless steel sinks, a 42-inch upright refrigerator/freezer, a four-burner cook top, and a microwave/convection oven. Deep drawers in the island and overhead cabinets provide an abundance of storage. For privacy, an optional pocket door at the aft end of the galley closes to seal off this area from the dining room and salon. Forward of the galley, a large, country kitchen-style dinette with stone counter top facilitates casual dining. An optional helm with a single pedestal chair is available for those that desire a lower driving station.

Исключения

При продаже яхты исключаются личные вещи владельца.

Отказ от ответственности

Компания предоставляет описание судна или яхты добросовестно, но не может гарантировать точность этой информации, а также не ручается за техническое состояние. Покупатель должен проинструктировать своих агентов или оценщиков исследовать представленную информацию более подробно, по собственному желанию. Продажа судна или яхты, изменение цены или снятие с продажи будет происходить без предварительного уведомления.

ФОТОГРАФИИ

Bow Area



Manufacturer Provided Image



Galley Seating Area



Salon and Bar



Salon



Salon

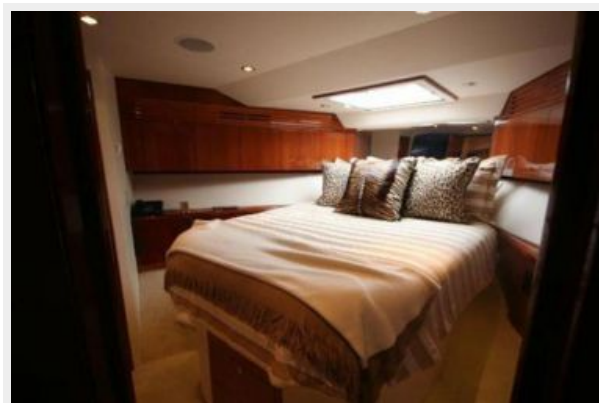


Dining Table



Stairs to Staterooms





Dining Table



Aft Deck Settee



Aft Deck Dining Table



Aft Deck



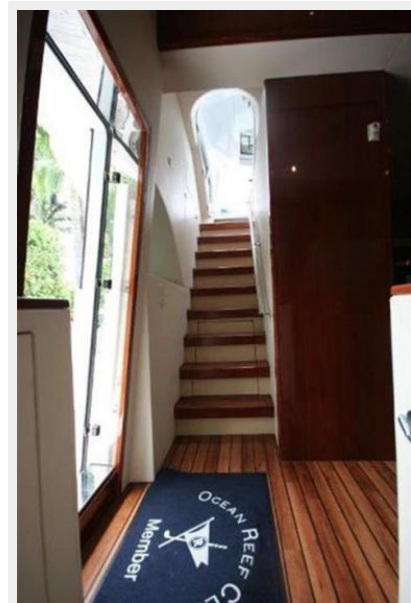
Outdoor Walk Around



Rich Wood Buffet Storage



Entryway



Outdoor Walk Around



Engine Room



Aft Deck Stairs













General Arrangement

Manufacturer Provided Image



КОНТАКТЫ

Андрей Шестаков (Andrey Shestakov) – ведущий яхтенный брокер отдела продаж яхт и судов компании Shestakov Yacht Sales Inc. Официальный представитель Shestakov Yacht Sales Inc. для русскоговорящих клиентов в центральном офисе компании в Майами/Форт Лодердейл/Флорида/США.

Контактная информация

Email: andrey@shestakovyachtsales.com

Web: shestakovyachtsales.com

Телефоны

Краснодарский край: **+7(918)465-66-44**

США, Майами, Флорида: **+1(954)274-4435**

Время работы

Понедельник – Суббота: **9:00 - 21:00**
EDT

Воскресенье: **Закрито**

Адрес



Harbour Towne Marina, 850 NE 3rd St,
STE 213, Dania, FL 33004