

43' 2005 SILVERTON 43 SPORT BRIDGE — SILVERTON



Builder: SILVERTON

Year Built: 2005

Model: Motor Yacht

Price: PRICE ON APPLICATION

Location: United States

LOA: 43' 0" (13.11m)

Beam: 14' 4" (4.37m)

Min Draft: 3' 10" (1.17m)

Max Draft: 3' 10" (1.17m)

Cruise Speed: 20 Kts. (23 MPH)

Max Speed: 28 Kts. (32 MPH)

Our experienced yacht broker, Andrey Shestakov, will help you choose and buy a yacht that best suits your needs 43' 2005 Silverton 43 Sport Bridge — SILVERTON from our catalogue. Presently, at Shestakov Yacht Sales Inc., we have a wide variety of yachts available on our sale's list. We also work in close contact with all the big yacht manufacturers from all over the world.

If you would like to buy a yacht 43' 2005 Silverton 43 Sport Bridge — SILVERTON or would like help answering any questions concerning purchasing, selling or chartering a yacht, please call +1(954)274-4435

TABLE OF CONTENTS

TABLE OF CONTENTS	2
SPECIFICATIONS	4
Basic Information	4
Dimensions	4
Speed, Capacities and Weight	4
Accommodations	4
Hull and Deck Information	4
Engine Information	5
DETAILED INFORMATION	6
Check out her Features	6
Exclusions	6
Disclaimer	6
PHOTOS	7
Starboard Cruising	7
Port Docked	7
Aft Slider with Screen	7
Salon Port	7
Salon	7
Salon Starboard	7
Salon	8
Salon looking Aft	8
Galley to the Port side	8
Galley 2	8
Guest Stateroom	9
Guest Stateroom 2	9
Master Head	9
Master Suite Center line Queen	9
Master Stateroom	10

Second Head, Sink/Vanity	10
Flybridge/Helm	10
Flybridge with Enclosures	10
Swim Platform	11
Flybridge "L" Seating	11
Manufacturer Provided Image	12
Manufacturer Provided Image	12
CONTACTS	13
Contact details	13
Telephones	13
Office hours	13
Address	13

SPECIFICATIONS

Basic Information

Category: Motor Yacht

Sub Category: Flybridge

Model Year: 2005

Year Built: 2005

Country: United States

Dimensions

LOA: 43' 0" (13.11m)

Beam: 14' 4" (4.37m)

Min Draft: 3' 10" (1.17m)

Max Draft: 3' 10" (1.17m)

Clearance: 14' 5" (4.39m)

Speed, Capacities and Weight

Cruise Speed: 20 Kts. (23 MPH)

Max Speed: 28 Kts. (32 MPH)

Water Capacity: 118 Gallons

Holding Tank: 50 Gallons

Fuel Capacity: 430 Gallons

Accommodations

Total Cabins: 2

Total Berths: 6

Total Heads: 2

Hull and Deck Information

Hull Material: Fiberglass

Engine Information

Manufacturer: Volvo Penta

Engine Type: Inboard

Fuel Type: Diesel

DETAILED INFORMATION

Check out her Features

Silverton has a reputation for rakish styling, and the 43 Sport Bridge remains one of the company's more distinctive designs. With her generous 14' 4" beam and spacious, full-width salon, this is a big 43-footer with more interior space than most other boats in her class. Her vast salon, with its appealing cherrywood cabinetry, facing leather settees and sculptured overhead panels, has a large, U-shaped galley forward, opposite an elevated dinette with circular seating for five. Note the hardwood galley floor and retractable salon TV. The forward master stateroom features a queen island bed, while the guest stateroom, aft and to starboard, has twin single beds. Cockpit steps lead up the 43's huge flybridge complete with wet bar, sun pad, lounge seating, and direct bow access. Her Volvo 480hp inboard diesels will cruise at 20 knots,

Exclusions

Owner's personal belongings.

Disclaimer

The Company offers the details of this vessel or yacht in good faith but cannot guarantee or warrant the accuracy of this information nor warrant the condition of the vessel. A buyer should instruct his representatives, agents, or his surveyors, to investigate such details as the buyer desires validated. This vessel or yacht is offered subject to prior sale, price change, or withdrawal without notice.

PHOTOS

Port Docked



Starboard Cruising



Aft Slider with Screen



Salon Port



Salon Starboard



Salon



Salon



Salon looking Aft



Galley to the Port side



Galley 2



Guest Stateroom



Guest Stateroom 2



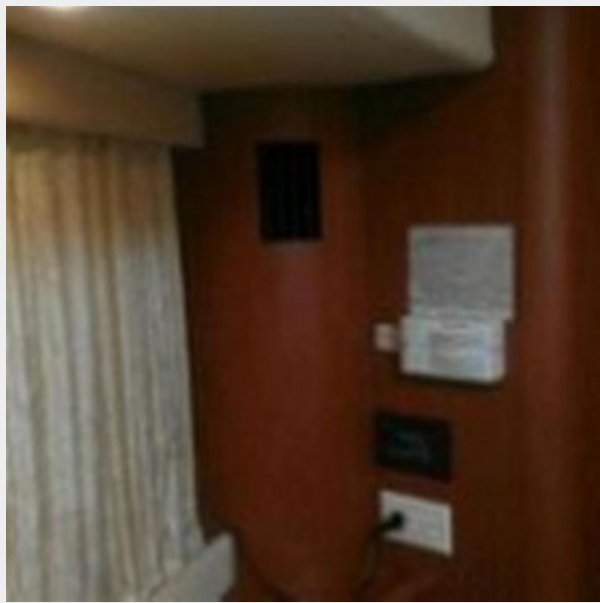
Master Head



Master Suite Center line Queen



Master Stateroom



Second Head, Sink/Vanity



Flybridge/Helm

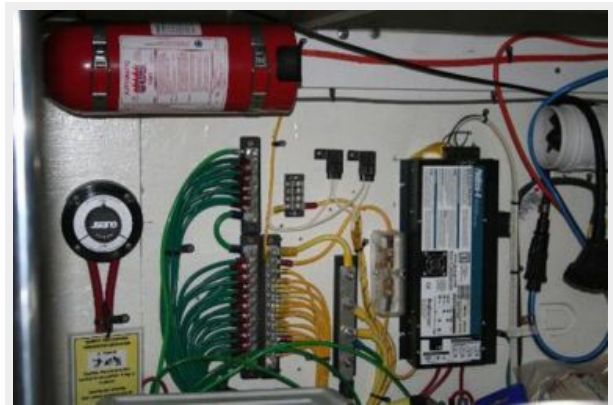


Flybridge with Enclosures



Swim Platform

Flybridge "L" Seating

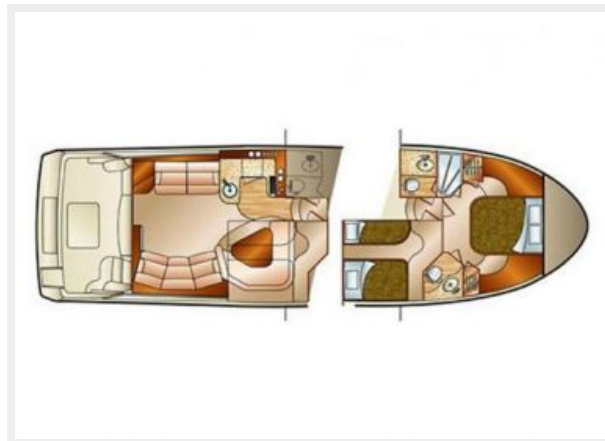




Manufacturer Provided Image



Manufacturer Provided Image



CONTACTS

Andrey Shestakov, leading yacht broker of the sales department of Shestakov Yacht Sales Inc. Shestakov Yacht Sales Inc., the official representative of the Miami/Fort Lauderdale FL headquarters.

Contact details

Email: andrey@shestakovyachtsales.com

Web: shestakovyachtsales.com/en/

Telephones

USA: +1(954)274-4435

Office hours

Monday – Saturday: **9:00 - 21:00** EDT

Sunday: **closed**

Address



Harbour Towne Marina, 850 NE 3rd St,
STE 213, Dania, FL 33004