

40' 1986 MAINSHIP 40 DOUBLE CABIN — MAINSHIP



Builder: MAINSHIP

Year Built: 1986

Model: Motor Yacht

Price: PRICE ON APPLICATION

Location: United States

LOA: 40' 0" (12.19m)

Beam: 14' 0" (4.27m)

Max Draft: 3' 4" (1.02m)

Cruise Speed: 18 Kts. (21 MPH)

Max Speed: 25 Kts. (29 MPH)

Our experienced yacht broker, Andrey Shestakov, will help you choose and buy a yacht that best suits your needs 40' 1986 Mainship 40 Double Cabin — MAINSHIP from our catalogue. Presently, at Shestakov Yacht Sales Inc., we have a wide variety of yachts available on our sale's list. We also work in close contact with all the big yacht manufacturers from all over the world.

If you would like to buy a yacht 40' 1986 Mainship 40 Double Cabin — MAINSHIP or would like help answering any questions concerning purchasing, selling or chartering a yacht, please call +1(954)274-4435

TABLE OF CONTENTS

TABLE OF CONTENTS	2
SPECIFICATIONS	3
Basic Information	3
Dimensions	3
Speed, Capacities and Weight	3
Accommodations	3
Hull and Deck Information	3
Engine Information	4
DETAILED INFORMATION	5
Additional Information	5
Exclusions	5
Disclaimer	5
PHOTOS	6
CONTACTS	10
Contact details	10
Telephones	10
Office hours	10
Address	10

SPECIFICATIONS

Basic Information

Category: Motor Yacht

Sub Category: Flybridge

Model Year: 1986

Year Built: 1986

Country: United States

Dimensions

LOA: 40' 0" (12.19m)

Beam: 14' 0" (4.27m)

Max Draft: 3' 4" (1.02m)

Clearance: 17' 6" (5.33m)

Speed, Capacities and Weight

Cruise Speed: 18 Kts. (21 MPH)

Max Speed: 25 Kts. (29 MPH)

Displacement: 24000 Pounds

Water Capacity: 150 Gallons

Holding Tank: 60 Gallons

Fuel Capacity: 300 Gallons

Accommodations

Total Cabins: 2

Total Berths: 3

Total Heads: 2

Hull and Deck Information

Hull Material: Fiberglass

Engine Information

Engines: 2

Manufacturer: Crusader

Model: 454

Engine Type: Inboard

Fuel Type: Gas/Petrol

DETAILED INFORMATION

Additional Information

Mainship 40 DC was notable in the late 1980s for her distinctive, trawler-style profile. This is a very practical boat, long on useful features.

Her traditional Downeast profile, her performance and interior accommodations are similar to those of a modern motor yacht.

The salon dimensions for a 40-footer with plenty of room to entertain guests in comfort. A lower helm, port and starboard salon deck doors, and a built-in bar were standard.

The full-width aft stateroom includes a double berth, excellent storage, and a tub/shower in the adjoining head compartment. (In 1985, light oak woodwork replaced the original dark teak interior joinery.)

Topside, the aft deck is large enough for casual entertaining.

Additional features include a bow pulpit, wide side decks, fold-down radarmast, and a swim platform with ladder.

The Mainship 40 DC will cruise at a respectable 18 knots with standard 350hp Crusader gas engines and reach a top speed of around 25 knots

Exclusions

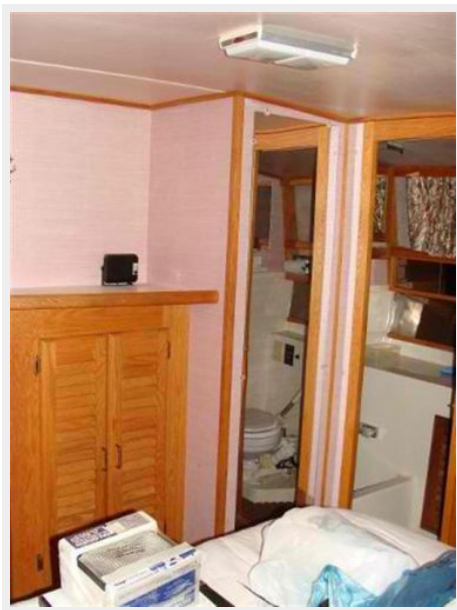
Owner's personal belongings.

Disclaimer

The Company offers the details of this vessel or yacht in good faith but cannot guarantee or warrant the accuracy of this information nor warrant the condition of the vessel. A buyer should instruct his representatives, agents, or his surveyors, to investigate such details as the buyer desires validated. This vessel or yacht is offered subject to prior sale, price change, or withdrawal without notice.

PHOTOS









CONTACTS

Andrey Shestakov, leading yacht broker of the sales department of Shestakov Yacht Sales Inc. Shestakov Yacht Sales Inc., the official representative of the Miami/Fort Lauderdale FL headquarters.

Contact details

Email: andrey@shestakovyachtsales.com

Web: shestakovyachtsales.com/en/

Telephones

USA: +1(954)274-4435

Office hours

Monday – Saturday: **9:00 - 21:00** EDT

Sunday: **closed**

Address



Harbour Towne Marina, 850 NE 3rd St,
STE 213, Dania, FL 33004