

## THE END OF THE LINE — BERTRAM



**Builder:** BERTRAM

**LOA:** 51' 0" (15.54m)

**Year Built:** 2002

**Beam:** 16' 2" (4.93m)

**Model:** Sport Fisherman

**Max Draft:** 5' 0" (1.52m)

**Price:** PRICE ON APPLICATION

**Location:** United States

Our experienced yacht broker, Andrey Shestakov, will help you choose and buy a yacht that best suits your needs **The End Of The Line — BERTRAM** from our catalogue. Presently, at Shestakov Yacht Sales Inc., we have a wide variety of yachts available on our sale's list. We also work in close contact with all the big yacht manufacturers from all over the world.

If you would like to buy a yacht **The End Of The Line — BERTRAM** or would like help answering any questions concerning purchasing, selling or chartering a yacht, please call **+1(954)274-4435**

# TABLE OF CONTENTS

---

TABLE OF CONTENTS	2
SPECIFICATIONS	5
Basic Information	5
Dimensions	5
Speed, Capacities and Weight	5
Accommodations	5
Hull and Deck Information	5
Engine Information	6
DETAILED INFORMATION	7
Description	7
Salon	7
Galley	8
Companionway	9
Master Stateroom	9
Master Stateroom Head	10
Guest Stateroom Forward	10
Guest Stateroom Starboard	10
Guest Day Head	11
Cockpit	11
Flybridge	12
Deck & Hull	14
Engine Room & Electrical	14
Exclusions	16
Exclusions	16
Disclaimer	16
PHOTOS	17
Profile	17
Port Side Profile	17

---

Transom	17
Starboard Side Profile	17
Cockpit	17
Fighting Chair	17
Flybridge Helm	18
Flybridge Helm	18
Flybridge Helm	18
Flybridge Seating	18
Flybridge Seating	18
Salon	18
Salon	19
Salon	19
Salon	19
Salon	19
Salon	19
Galley	20
Galley	20
Dinnette	20
Overhead Rod Storage	20
Master Stateroom	21
Master Stateroom	21
Master Head	21
Forward Stateroom	21
Twin Berth Stateroom	22
Forward Stateroom	22
Guest Head	22
Engine Room	22
Engine Room	23
Engine Room	23
Engine Room	23

---

---

Engine Room	23
Engine Room	24
Engine Room	24
Engine Room	24
Engine Room	24
CONTACTS	25
Contact details	25
Telephones	25
Office hours	25
Address	25

---

# SPECIFICATIONS

---

## Basic Information

---

**Category:** Sport Fisherman

**Sub Category:** Convertible

**Model Year:** 2002

**Year Built:** 2002

**Country:** United States

**Fly Bridge:** Yes

**Cockpit:** Yes

## Dimensions

---

**LOA:** 51' 0" (15.54m)

**Beam:** 16' 2" (4.93m)

**Max Draft:** 5' 0" (1.52m)

## Speed, Capacities and Weight

---

**Displacement:** 65489 Pounds

**Water Capacity:** 185 Gallons

**Fuel Capacity:** 1040 Gallons

## Accommodations

---

**Total Cabins:** 3

**Total Berths:** 4

**Sleeps:** 6

**Total Heads:** 2

## Hull and Deck Information

---

**Hull Material:** Fiberglass

---

## Engine Information

---

**Engines:** 2

**Manufacturer:** MAN

**Model:** D284OLE

**Engine Type:** Inboard

**Fuel Type:** Diesel

---

# DETAILED INFORMATION

---

## Description

---

This 2002 51ft Bertram truly shows better than any other 2000-2004 on the market today. You cannot find more boat, in better condition at a lower price. Beautiful Italian High Gloss Cherry Interior, with concealed rod storage. The vessel is in exceptional condition and has been Captain maintained to the highest standards. All required MAN diesel services have been professionally completed BEFORE they were due. Complete engine service 200 hrs ago. The engine room is immaculate, has zero rust, and looks more like a hospital operating room.

The 51ft Bertram is the best riding sportfish in its class. Ask any yacht broker. You must ride in a Bertram to understand the head-sea ability compared to a other vessels.

### NEW AS OF OCTOBER, 2015:

Complete bridge enclosure Completely renovated engine mechanical room Salt water wash down pump Hot water heater ( stainless ) New AGM Port battery bank New Back-end ( electrical ) of generator New generator sound shield Complete Generator servicing

New microwave New stovetop

### RECENT ADDITIONS AND UPGRADES:

New Captains chairs with covers New cockpit non-skid New cockpit bolsters Cockpit deep-drop outlets ( port and starboard ) New Trident silicon hoses on exhaust risers Waterproof solenoids LED Lighting Epoch Super Electric Teaser Reels Palm Beach Controls Custom Salon entertainment center. With 32in Sony TV, Playstation, Blu-Ray, CD changer and IPOD station New Flat Screen TV and Blu Ray player in Master stateroom New wallpaper in both heads Custom Made mattresses in Master and VIP

### REMARKS:

The 51' is Bertram's most successful model. She runs completely dry and efficiently ( 27 knots-65 gallons per hour ) and makes for a perfect size 3 stateroom , 2 head convertible. There are NO BUNKBEDS!!

"The End of the Line" is truly a turn-key operation ready to fish or cruise reflecting the care of a fastidious owner. With her MAN'S, A/C system, generator and electronics serviced and up-to-date, " The End of the Line " is ready to take her new owner to The Bahamas and beyond.

The seller is market aware and priced this vessel accordingly.

---

## Salon

---

- Remodeled entertainment center
- Sony 32' flat screen TV
- L-shaped sofa
- Custom Cherry high gloss tables w/ great storage
- Padded settee port side w/ storage below
- I-pod station
- Blu-ray player
- Sony Play station
- Original Bertram table
- LED lights (new)
- Raritan icemaker
- Central vacuum system
- A/C electronic control
- 120V A/C receptacles
- Electrical distribution panel
- Overhead grab rail
- Overhead concealed rod locker
- Varnished wood paneling
- Vinyl headliner
- Icemaker
- Remote control start stop for generator at electrical panel
- Reverse polarity indicator
- Main control system for chill water cold system located in main electrical panel

---

## Galley

---

- Corian sink



- Kenyon glass top three burner stove
- Two molded FRP sinks
- Single lever hot & cold faucet
- Microwave
- Undercounter Sub-Zero Refrigerator & Freezer
- Storage Cabinets
- 120V A/C lighting
- Overhead rod storage compartment • Vinyl headliner
- Padded dinette settee with Corian top • New Microwave • New stove top

## Companionway

---

- Access doors to staterooms
- Starboard guest head
- Laundry locker with shelf
- 24DC lighting
- Washer & dryer in locker
- Vinyl headliner & wall covering

## Master Stateroom

---

- Queen size berth with drawer storage beneath
- New flat screen TV
- New Blu-Ray player
- Cedar lined hanging locker w/ drawer storage
- A/C electronic control
- Vinyl headliner
- Vinyl wall covering

- Mirrored aft bulkhead
- 120V AC & 24V DC
- 120V AC receptacles

## **Master Stateroom Head**

---

- Private entrance
- Corian countertop and sink
- Single lever hot and cold faucet
- Stall shower with door and floor grate
- Vanity locker with mirror panels
- Cherry floor
- Lighting

## **Guest Stateroom Forward**

---

- Centerline queen size berth with storage beneath
- TV/VCR
- Clarion Stereo
- Cedar lined hanging lockers
- Hullside storage lockers
- Vinyl headliner and wall covering
- Bomar skylight deck hatch w/ recessed pull out screen
- 120V AC & 24V DC
- 120V AC receptacles
- A/C electronic control

## **Guest Stateroom Starboard**

---

- Twin berths w/ drawer storage beneath
- TV/VCR
- Stereo
- Cedar lined hanging lockers
- Hullside storage shelves
- Vinyl headliner & wall covering
- 120V AC & 24V DC
- 120V AC receptacles
- A/C electronic control

## Guest Day Head

---

- Corian countertops and sink
- Molded FRP sink
- Molded FRP shower stall
- Raritan Atlantic electric toilet system
- Single lever hot and cold faucet
- Stall shower with door and floor grate
- Vanity locker with mirror panels
- Cherry floor
- Head and shower lighting
- Blower

## Cockpit

---

- Custom Murray fighting chair fitted with custom teak four rod rack holder with cutting board outside
- Four gunwales rod holders

- 
- New Macerator pump, fish box
  - Upgraded cockpit freezer (extra insulation)
  - Sink with fresh & salt water spigots
  - Tackle drawers
  - Deep drop outlets, port and starboard
  - Deck hatches with recessed cam locks to secure closed when underway
  - Molded FRP bait tackle prep center with freezer
  - Access to engine room through molded hatch step way
  - Access to salon
  - Live well
  - Four flush mounted rod holders on pilasters
  - Courtesy deck lighting
  - Marinco 50amp - 125V shore power cord receptacle
  - Marinco dockside telephone/TV/cable hookup
  - Cablemaster shore power cord reel
  - Salt & Fresh water washdown
  - Padded knee bolsters • Transom door w/ heavy duty spring loaded latch to secure closed
  - Port & Starboard outriggers
  - Transom top deck storage locker fish box
  - Clarion stereo speakers (2)
  - Dockside water

## Flybridge

---

- New Captains chairs (re-upholstered) and new chair covers
- U-Shaped lounge to seat six
- Console cover

- Full zippered Eisenglass enclosure
- Seven rod rocket launchers
- Hard top teaser reels
- Helm station
- Maya Epoch Super 9 electric teaser reels
- Remote control for windlass
- U-shaped padded settee forward of helm
- Access hatch to flybridge wing locker
- RPM/Oil pressure/Engine temperature/Voltage/Transmission oil pressure & temperature instruments
- Hour meters
- VHS Marine radio telephone
- LCD depth sounder
- Northstar color GPS plotter
- Robertson AP22 auto pilot
- Furuno Radar
- Furuno Color video sounder
- Mico Commander control
- Horn
- Fuel tank gauge
- Manual control switches for bilge pump
- Clarion AM/FM/Stereo
- Two speakers aft
- 24V DC electronics accessory panel w/ magnetic circuit breakers in console
- 12V DC electronics accessory panel w/ magnetic circuit breakers in console
- Alarm monitor panel w/ bilge flood signal for three compartments

- 
- Battery Parallel switch
  - Remote ground fault circuit interrupter receptacles in console
  - Main engine control panel
  - Overhead lights
  - Molded -in cockpit spreader lights
  - Molded FRP hard top w/ aft deck flood lighting
  - ACR remote control search light
  - GPS antenna receiver
  - ATW loud hailer horn

## Deck & Hull

---

- Underwater transom lights
- Pulpit
- Simpson- Lawrence electric windlass
- Hauled & bottom paint, prop speed running gear (11/11)
- Non-skid deck
- SS deck hardware
- Port & Starboard navigation lights
- Molder FRP pulpit
- New outrigger lines (6/12)
- Trim tabs
- Anchor light

## Engine Room & Electrical

---

- Two MAN 10 cylinder fresh water cooled inboard marine diesel engines
- New waterproof solenoids, P&S

- New AMG batteries (5), 3/11
- New raw water pumps & pressure switch P&S, 6/12
- New A/C compressors (2), new hoses & A/C pump, 3/1213
- New Trident silicone hoses on exhaust risers, water can cooling system cleaned, 8/13
- Racor fuel filters
- Jabsco 1915 submersible bilge pump w/ automatic float switch
- Aeroquip fuel feed lines
- End line fuel shut off valves
- Forward bilges
- Automatic engine room fire extinguisher
- Micro Commander engine control relay boxes
- Electric engine room blowers
- Fluorescent lighting with safety guards
- 12V DC lighting
- Oil change out pump
- Marine battery charger
- Kohler generator box
- Four battery boxes fitted with non conductive covers
- U-line high capacity pump
- Galley Maid Marine fresh water pump
- CruiseAir Marine raw water circulating pump
- Battery shut off switches w/ fused panel
- Engine room insulation
- 24V DC batteries panel w/ switches for main engines & main battery disconnect switches
- 24 DC fuses for uninterrupted power to bilge pumps, fire & bilge flood monitors
- Heavy duty A/C zoned batteries (4) - 12V DC, two banks of two

- ACE Marine completed the last 2 complete MAN engine services: 1st service at 625 hrs , 2nd service at 1585 hrs, last service done 2300hrs

## **Exclusions**

---

Personal items and fishing equipment.

## **Exclusions**

---

Owner's personal belongings.

## **Disclaimer**

---

The Company offers the details of this vessel or yacht in good faith but cannot guarantee or warrant the accuracy of this information nor warrant the condition of the vessel. A buyer should instruct his representatives, agents, or his surveyors, to investigate such details as the buyer desires validated. This vessel or yacht is offered subject to prior sale, price change, or withdrawal without notice.



# PHOTOS

**Profile**



**Port Side Profile**



**Transom**



**Starboard Side Profile**



**Cockpit**



**Fighting Chair**



**Flybridge Helm**



**Flybridge Helm**



**Flybridge Helm**



**Flybridge Seating**



**Flybridge Seating**



**Salon**



Salon



Salon



Salon

Salon





**Galley**



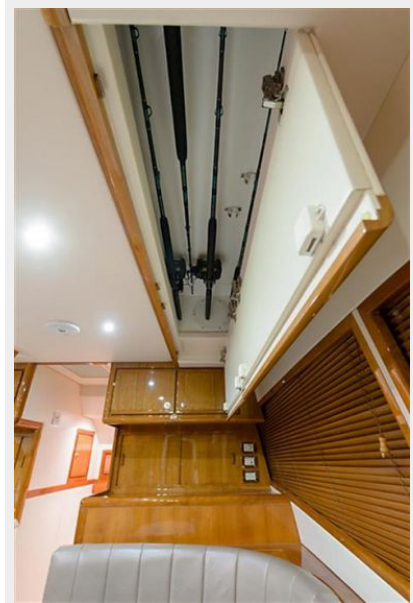
**Galley**



**Dinette**



**Overhead Rod Storage**



### Master Stateroom



### Master Stateroom



### Master Head



### Forward Stateroom



**Forward Stateroom**



**Twin Berth Stateroom**



**Guest Head**



**Engine Room**





**Engine Room**



**Engine Room**



**Engine Room**



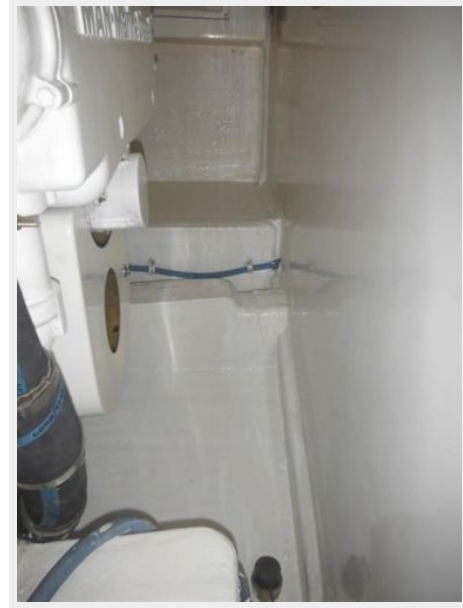
**Engine Room**



**Engine Room**



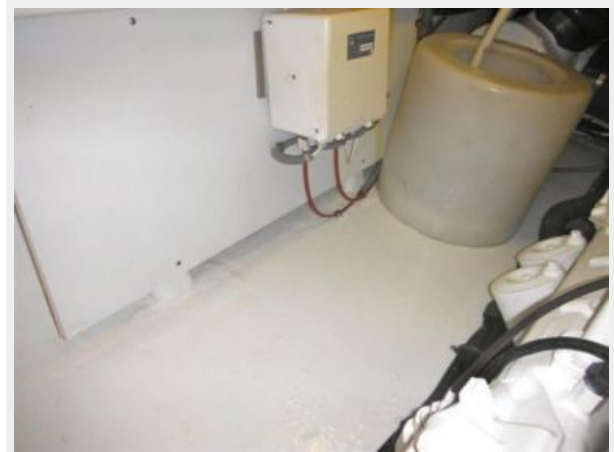
**Engine Room**



**Engine Room**



**Engine Room**





# CONTACTS

---

Andrey Shestakov, leading yacht broker of the sales department of Shestakov Yacht Sales Inc. Shestakov Yacht Sales Inc., the official representative of the Miami/Fort Lauderdale FL headquarters.

## Contact details

---

Email: [andrey@shestakovyachtsales.com](mailto:andrey@shestakovyachtsales.com)

Web: [shestakovyachtsales.com/en/](http://shestakovyachtsales.com/en/)

## Telephones

---

USA: +1(954)274-4435

## Office hours

---

Monday – Saturday: **9:00 - 21:00** EDT

Sunday: **closed**

## Address

---



Harbour Towne Marina, 850 NE 3rd St,  
STE 213, Dania, FL 33004