

THE END OF THE LINE — BERTRAM



Судостроитель: BERTRAM

Год постройки: 2002

Модель: Катер для спортивной рыбалки

Цена: ЦЕНА ЯХТЫ ПО ЗАПРОСУ

Местонахождение: United States

Длина общая: 51' 0" (15.54m)

Ширина: 16' 2" (4.93m)

Макс. осадка: 5' 0" (1.52m)

Купить **The End Of The Line — BERTRAM** а также выбрать подходящую вам яхту из нашего каталога яхт вам поможет опытный яхтенный брокер Андрей Шестаков. На сегодняшний день компания **Shestakov Yacht Sales Inc.** имеет большое количество яхт в собственном списке продаж, а также тесно сотрудничает со всеми крупными яхтенными производителями по всему миру.

Для того чтобы купить яхту **The End Of The Line — BERTRAM** а также проконсультироваться по любому вопросу связанному с покупкой, продажей, чартером яхт позвоните по телефону **+7(918)465-66-44**.

ОГЛАВЛЕНИЕ

ОГЛАВЛЕНИЕ	2
ХАРАКТЕРИСТИКИ	5
Основная информация	5
Размеры	5
Скорость, вместимость и масса	5
Размещение	5
Корпус и палуба	5
Информация о двигателе	6
ПОДРОБНОЕ ОПИСАНИЕ	7
Description	7
Salon	7
Galley	8
Companionway	9
Master Stateroom	9
Master Stateroom Head	10
Guest Stateroom Forward	10
Guest Stateroom Starboard	10
Guest Day Head	11
Cockpit	11
Flybridge	12
Deck & Hull	14
Engine Room & Electrical	14
Exclusions	16
Исключения	16
Отказ от ответственности	16
ФОТОГРАФИИ	17
Profile	17
Port Side Profile	17

Transom	17
Starboard Side Profile	17
Cockpit	17
Fighting Chair	17
Flybridge Helm	18
Flybridge Helm	18
Flybridge Helm	18
Flybridge Seating	18
Flybridge Seating	18
Salon	18
Salon	19
Salon	19
Salon	19
Salon	19
Salon	19
Galley	20
Galley	20
Dinnette	20
Overhead Rod Storage	20
Master Stateroom	21
Master Stateroom	21
Master Head	21
Forward Stateroom	21
Twin Berth Stateroom	22
Forward Stateroom	22
Guest Head	22
Engine Room	22
Engine Room	23
Engine Room	23
Engine Room	23

Engine Room	23
Engine Room	24
Engine Room	24
Engine Room	24
Engine Room	24
КОНТАКТЫ	25
Контактная информация	25
Телефоны	25
Время работы	25
Адрес	25

ХАРАКТЕРИСТИКИ

Основная информация

Тип судна: Катер для спортивной рыбалки

Подкатегория: Convertible

Модельный год: 2002

Год постройки: 2002

Страна: United States

Открытая палуба мостика: Да

Кубрик: Да

Размеры

Длина общая: 51' 0" (15.54m)

Ширина: 16' 2" (4.93m)

Макс. осадка: 5' 0" (1.52m)

Скорость, вместимость и масса

Водоизмещение: 65489 Pounds

Вместимость воды: 185 Gallons

Объем топливного бака: 1040 Gallons

Размещение

Всего кают: 3

Всего коек: 4

Спальные места: 6

Всего ком. состава: 2

Корпус и палуба

Материал корпуса: Fiberglass

Информация о двигателе

Двигатели: 2

Производитель: MAN

Модель: D284OLE

Тип двигателя: Inboard

Тип топлива: Diesel

ПОДРОБНОЕ ОПИСАНИЕ

Description

This 2002 51ft Bertram truly shows better than any other 2000-2004 on the market today. You cannot find more boat, in better condition at a lower price. Beautiful Italian High Gloss Cherry Interior, with concealed rod storage. The vessel is in exceptional condition and has been Captain maintained to the highest standards. All required MAN diesel services have been professionally completed BEFORE they were due. Complete engine service 200 hrs ago. The engine room is immaculate, has zero rust, and looks more like a hospital operating room.

The 51ft Bertram is the best riding sportfish in its class. Ask any yacht broker. You must ride in a Bertram to understand the head-sea ability compared to a other vessels.

NEW AS OF OCTOBER, 2015:

Complete bridge enclosure Completely renovated engine mechanical room Salt water wash down pump Hot water heater (stainless) New AGM Port battery bank New Back-end (electrical) of generator New generator sound shield Complete Generator servicing

New microwave New stovetop

RECENT ADDITIONS AND UPGRADES:

New Captains chairs with covers New cockpit non-skid New cockpit bolsters Cockpit deep-drop outlets (port and starboard) New Trident silicon hoses on exhaust risers Waterproof solenoids LED Lighting Epoch Super Electric Teaser Reels Palm Beach Controls Custom Salon entertainment center. With 32in Sony TV, Playstation, Blu-Ray, CD changer and IPOD station New Flat Screen TV and Blu Ray player in Master stateroom New wallpaper in both heads Custom Made mattresses in Master and VIP

REMARKS:

The 51' is Bertram's most successful model. She runs completely dry and efficiently (27 knots-65 gallons per hour) and makes for a perfect size 3 stateroom , 2 head convertible. There are NO BUNKBEDS!!

"The End of the Line" is truly a turn-key operation ready to fish or cruise reflecting the care of a fastidious owner. With her MAN'S, A/C system, generator and electronics serviced and up-to-date, " The End of the Line " is ready to take her new owner to The Bahamas and beyond.

The seller is market aware and priced this vessel accordingly.

Salon

- Remodeled entertainment center
- Sony 32' flat screen TV
- L-shaped sofa
- Custom Cherry high gloss tables w/ great storage
- Padded settee port side w/ storage below
- I-pod station
- Blu-ray player
- Sony Play station
- Original Bertram table
- LED lights (new)
- Raritan icemaker
- Central vacuum system
- A/C electronic control
- 120V A/C receptacles
- Electrical distribution panel
- Overhead grab rail
- Overhead concealed rod locker
- Varnished wood paneling
- Vinyl headliner
- Icemaker
- Remote control start stop for generator at electrical panel
- Reverse polarity indicator
- Main control system for chill water cold system located in main electrical panel

Galley

- Corian sink

- Kenyon glass top three burner stove
- Two molded FRP sinks
- Single lever hot & cold faucet
- Microwave
- Undercounter Sub-Zero Refrigerator & Freezer
- Storage Cabinets
- 120V A/C lighting
- Overhead rod storage compartment • Vinyl headliner
- Padded dinette settee with Corian top • New Microwave • New stove top

Companionway

- Access doors to staterooms
- Starboard guest head
- Laundry locker with shelf
- 24DC lighting
- Washer & dryer in locker
- Vinyl headliner & wall covering

Master Stateroom

- Queen size berth with drawer storage beneath
- New flat screen TV
- New Blu-Ray player
- Cedar lined hanging locker w/ drawer storage
- A/C electronic control
- Vinyl headliner
- Vinyl wall covering

- Mirrored aft bulkhead
- 120V AC & 24V DC
- 120V AC receptacles

Master Stateroom Head

- Private entrance
- Corian countertop and sink
- Single lever hot and cold faucet
- Stall shower with door and floor grate
- Vanity locker with mirror panels
- Cherry floor
- Lighting

Guest Stateroom Forward

- Centerline queen size berth with storage beneath
- TV/VCR
- Clarion Stereo
- Cedar lined hanging lockers
- Hullside storage lockers
- Vinyl headliner and wall covering
- Bomar skylight deck hatch w/ recessed pull out screen
- 120V AC & 24V DC
- 120V AC receptacles
- A/C electronic control

Guest Stateroom Starboard

- Twin berths w/ drawer storage beneath
- TV/VCR
- Stereo
- Cedar lined hanging lockers
- Hullside storage shelves
- Vinyl headliner & wall covering
- 120V AC & 24V DC
- 120V AC receptacles
- A/C electronic control

Guest Day Head

- Corian countertops and sink
- Molded FRP sink
- Molded FRP shower stall
- Raritan Atlantic electric toilet system
- Single lever hot and cold faucet
- Stall shower with door and floor grate
- Vanity locker with mirror panels
- Cherry floor
- Head and shower lighting
- Blower

Cockpit

- Custom Murray fighting chair fitted with custom teak four rod rack holder with cutting board outside
- Four gunwales rod holders

- New Macerator pump, fish box
- Upgraded cockpit freezer (extra insulation)
- Sink with fresh & salt water spigots
- Tackle drawers
- Deep drop outlets, port and starboard
- Deck hatches with recessed cam locks to secure closed when underway
- Molded FRP bait tackle prep center with freezer
- Access to engine room through molded hatch step way
- Access to salon
- Live well
- Four flush mounted rod holders on pilasters
- Courtesy deck lighting
- Marinco 50amp - 125V shore power cord receptacle
- Marinco dockside telephone/TV/cable hookup
- Cablemaster shore power cord reel
- Salt & Fresh water washdown
- Padded knee bolsters • Transom door w/ heavy duty spring loaded latch to secure closed
- Port & Starboard outriggers
- Transom top deck storage locker fish box
- Clarion stereo speakers (2)
- Dockside water

Flybridge

- New Captains chairs (re-upholstered) and new chair covers
- U-Shaped lounge to seat six
- Console cover

- Full zippered Eisenglass enclosure
- Seven rod rocket launchers
- Hard top teaser reels
- Helm station
- Maya Epoch Super 9 electric teaser reels
- Remote control for windlass
- U-shaped padded settee forward of helm
- Access hatch to flybridge wing locker
- RPM/Oil pressure/Engine temperature/Voltage/Transmission oil pressure & temperature instruments
- Hour meters
- VHS Marine radio telephone
- LCD depth sounder
- Northstar color GPS plotter
- Robertson AP22 auto pilot
- Furuno Radar
- Furuno Color video sounder
- Mico Commander control
- Horn
- Fuel tank gauge
- Manual control switches for bilge pump
- Clarion AM/FM/Stereo
- Two speakers aft
- 24V DC electronics accessory panel w/ magnetic circuit breakers in console
- 12V DC electronics accessory panel w/ magnetic circuit breakers in console
- Alarm monitor panel w/ bilge flood signal for three compartments

- Battery Parallel switch
- Remote ground fault circuit interrupter receptacles in console
- Main engine control panel
- Overhead lights
- Molded -in cockpit spreader lights
- Molded FRP hard top w/ aft deck flood lighting
- ACR remote control search light
- GPS antenna receiver
- ATW loud hailer horn

Deck & Hull

- Underwater transom lights
- Pulpit
- Simpson- Lawrence electric windlass
- Hauled & bottom paint, prop speed running gear (11/11)
- Non-skid deck
- SS deck hardware
- Port & Starboard navigation lights
- Molder FRP pulpit
- New outrigger lines (6/12)
- Trim tabs
- Anchor light

Engine Room & Electrical

- Two MAN 10 cylinder fresh water cooled inboard marine diesel engines
- New waterproof solenoids, P&S

- New AMG batteries (5), 3/11
- New raw water pumps & pressure switch P&S, 6/12
- New A/C compressors (2), new hoses & A/C pump, 3/1213
- New Trident silicone hoses on exhaust risers, water can cooling system cleaned, 8/13
- Racor fuel filters
- Jabsco 1915 submersible bilge pump w/ automatic float switch
- Aeroquip fuel feed lines
- End line fuel shut off valves
- Forward bilges
- Automatic engine room fire extinguisher
- Micro Commander engine control relay boxes
- Electric engine room blowers
- Fluorescent lighting with safety guards
- 12V DC lighting
- Oil change out pump
- Marine battery charger
- Kohler generator box
- Four battery boxes fitted with non conductive covers
- U-line high capacity pump
- Galley Maid Marine fresh water pump
- CruiseAir Marine raw water circulating pump
- Battery shut off switches w/ fused panel
- Engine room insulation
- 24V DC batteries panel w/ switches for main engines & main battery disconnect switches
- 24 DC fuses for uninterrupted power to bilge pumps, fire & bilge flood monitors
- Heavy duty A/C zoned batteries (4) - 12V DC, two banks of two

- ACE Marine completed the last 2 complete MAN engine services: 1st service at 625 hrs , 2nd service at 1585 hrs, last service done 2300hrs

Exclusions

Personal items and fishing equipment.

Исключения

При продаже яхты исключаются личные вещи владельца.

Отказ от ответственности

Компания предоставляет описание судна или яхты добросовестно, но не может гарантировать точность этой информации, а также не ручается за техническое состояние. Покупатель должен проинструктировать своих агентов или оценщиков исследовать представленную информацию более подробно, по собственному желанию. Продажа судна или яхты, изменение цены или снятие с продажи будет происходить без предварительного уведомления.

ФОТОГРАФИИ

Profile



Port Side Profile



Transom



Starboard Side Profile



Сockpit



Fighting Chair



Flybridge Helm



Flybridge Helm



Flybridge Helm



Flybridge Seating



Flybridge Seating



Salon



Salon



Salon



Salon

Salon



Galley



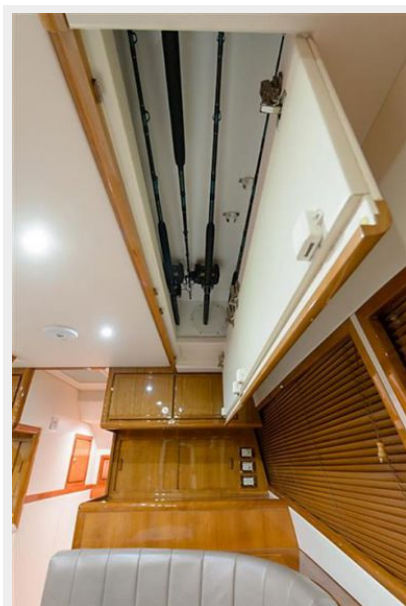
Galley



Dinette



Overhead Rod Storage



Master Stateroom



Master Stateroom



Master Head



Forward Stateroom



Forward Stateroom



Twin Berth Stateroom



Guest Head



Engine Room



Engine Room



Engine Room



Engine Room



Engine Room



Engine Room



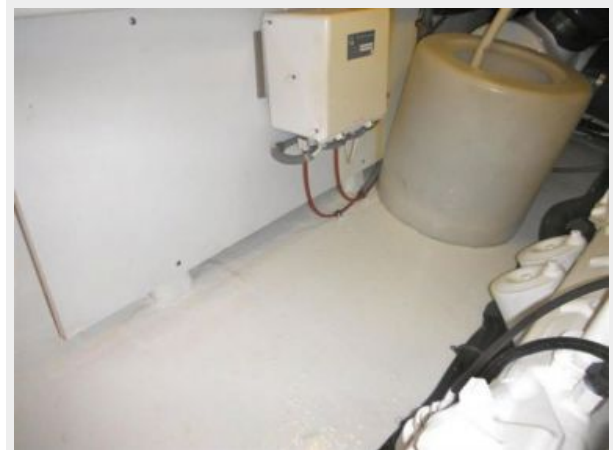
Engine Room



Engine Room



Engine Room



КОНТАКТЫ

Андрей Шестаков (Andrey Shestakov) – ведущий яхтенный брокер отдела продаж яхт и судов компании Shestakov Yacht Sales Inc. Официальный представитель Shestakov Yacht Sales Inc. для русскоговорящих клиентов в центральном офисе компании в Майами/Форт Лодердейл/Флорида/США.

Контактная информация

Email: andrey@shestakovyachtsales.com

Web: shestakovyachtsales.com

Телефоны

Краснодарский край: **+7(918)465-66-44**

США, Майами, Флорида: **+1(954)274-4435**

Время работы

Понедельник – Суббота: **9:00 - 21:00**
EDT

Воскресенье: **Закрыто**

Адрес



Harbour Towne Marina, 850 NE 3rd St,
STE 213, Dania, FL 33004