

## NO NAME 74 — VIKING



**Судостроитель:** VIKING

**Год постройки:** 2007

**Модель:** Катер для спортивной рыбалки

**Цена:** **ЦЕНА ЯХТЫ ПО ЗАПРОСУ**

**Местонахождение:** United States

**Длина общая:** 74' 0" (22.56m)

**Ширина:** 19' 4" (5.89m)

**Макс. осадка:** 5' 6" (1.68m)

Купить **NO NAME 74 — VIKING** а также выбрать подходящую вам яхту из нашего каталога яхт вам поможет опытный яхтенный брокер Андрей Шестаков. На сегодняшний день компания **Shestakov Yacht Sales Inc.** имеет большое количество яхт в собственном списке продаж, а также тесно сотрудничает со всеми крупными яхтенными производителями по всему миру.

Для того чтобы купить яхту **NO NAME 74 — VIKING** а также проконсультироваться по любому вопросу связанному с покупкой, продажей, чартером яхт позвоните по телефону **+7(918)465-66-44**.

# ОГЛАВЛЕНИЕ

ОГЛАВЛЕНИЕ	2
ХАРАКТЕРИСТИКИ	5
Основная информация	5
Размеры	5
Скорость, вместимость и масса	5
Размещение	5
Корпус и палуба	5
Информация о двигателе	6
ПОДРОБНОЕ ОПИСАНИЕ	7
Vessel Highlights	7
Vessel Walkthrough	7
Salon	7
Galley	7
Dinette	8
Companionway	8
Master Stateroom	8
Master Head	8
VIP Stateroom, Forward	9
VIP Head	9
Guest Stateroom, Port	9
Guest Head, Port	9
Aft Crew Stateroom	10
Crew Head	10
Enclosed Flybridge	10
Electronics	10
Cockpit	11
Engine & Mechanical	11
Hull/Deck/Exterior	12

Исключения	12
Отказ от ответственности	12
ФОТОГРАФИИ	13
Salon	13
Salon	13
Salon	13
Salon	13
Galley	13
Galley	13
Dinete	14
Galley	14
Companionway	14
Day Head	14
Laundry Center	15
Master Stateroom	15
Master Stateroom	15
Master Stateroom	15
Master Stateroom	16
Master Stateroom	16
Master Head	16
Forward Stateroom	16
Forward Stateroom	17
Forward Stateroom	17
Forward Head	17
Guest Stateroom	17
Guest Head	18
Crew Head	18
Crew Quarters	18
Crew Quarters	18

---

Enclosed Flybridge	19
Enclosed Flybridge	19
Enclosed Flybridge	19
Enclosed Flybridge	19
Enclosed Flybridge	19
Flybridge Aft Deck	19
Flybridge Aft Deck	20
Flybridge Aft Deck	20
Flybridge Aft Deck	20
Cockpit	20
Cockpit	21
Cockpit	21
Cockpit	21
Cockpit	21
Engine Room	21
Engine Room	21
Engine Room	22
Engine Room	22
Engine Room	22
Engine Room	22
Engine Room	22
Bow Profile	22
Stern Profile	22
<b>КОНТАКТЫ</b>	<b>23</b>
Контактная информация	23
Телефоны	23
Время работы	23
Адрес	23

# ХАРАКТЕРИСТИКИ

## Основная информация

**Тип судна:** Катер для спортивной рыбалки

**Модельный год:** 2007

**Год постройки:** 2007

**Страна:** United States

**Открытая палуба мостика:** Да

**Кубрик:** Да

## Размеры

**Длина общая:** 74' 0" (22.56m)

**Ширина:** 19' 4" (5.89m)

**Макс. осадка:** 5' 6" (1.68m)

## Скорость, вместимость и масса

**Водоизмещение:** 135000 Pounds

**Вместимость воды:** 385 Gallons

**Объем топливного бака:** 3000 Gallons

## Размещение

**Всего кают:** 4

## Корпус и палуба

**Материал корпуса:** Fiberglass

## Информация о двигателе

---

**Двигатели:** 2

**Производитель:** MTU

**Модель:** 16V2000M93

**Тип двигателя:** Inboard

**Тип топлива:** Diesel

---

# ПОДРОБНОЕ ОПИСАНИЕ

---

## Vessel Highlights

---

**2400HP MTU 16V2000 M93**

**400 Original Hours**

**Teak Deck / Mezzanine / Covering Boards**

**New Bottom Paint**

## Vessel Walkthrough

---

This vessel features the highly desirable (4) stateroom, (4) head layout, with a day head forward on the salon deck. A 50" pop up TV, upgraded Bose entertainment system, custom couch, and granite treatment highlight the salon. Galley upgrades include Gaggenau oven, (4) burner stove, dishwasher, and a trash compactor. The very rich feeling salon area is completed by Golden fantasy granite, a custom headliner, and beautiful Amtico flooring. There are upgraded mattresses throughout, upgraded fixtures in the heads and custom wallpaper treatments. She has been lightly used and beautifully maintained.

## Salon

---

- Large custom L-shaped sofa with storage below
- Teak hi-lo table
- Custom carpeting
- 50" Plasma TV that raises and lowers
- Bose Surround sound system
- Kenmore ice maker
- Custom teak valences/lambrequins
- Day head with storage locker
- Spiral staircase to enclosed bridge
- Electric salon door with teak & holly entrance

## Galley

---

- Custom granite countertops with Ogee edge
- Amtico teak and holly flooring
- Stainless steel sink and nickel faucet
- Kenmore dishwasher
- (6) Sub-Zero drawers; (3) Refrigerator, (3) Freezers

- Kenmore trash compactor
- Sharp stainless steel convection microwave
- Four-burner stove
- Gaggenau oven
- Mirrored backsplash

---

## Dinette

---

- Large U-shaped seating with storage below
- Teak table

---

## Companionway

---

- Teak side board with storage
- Amtico teak and holly flooring

---

## Master Stateroom

---

- Fore and aft king berth with storage
- Upgraded mattress
- Custom wallpaper
- Teak side tables
- Master loveseat
- Teak and holly floors
- Custom headboard
- Master stateroom safe
- Hanging lockers
- 24" Samsung LED TV
- Bose Stereo system
- Overhead hatch
- DVD BluRay player

---

## Master Head

---

- Amtico cherry teak and holly flooring
- Brass faucet
- Granite countertop
- Teak vanity
- Mirrored ceiling
- Techma head
- Full shower stall



- One-piece shower door
- Linen closet

---

## VIP Stateroom, Forward

---

- Queen berth centerline with storage below
- Upgraded mattress
- 24" LED Samsung TV
- Overhead hatch
- Custom wallpaper
- Teak & holly floor
- Mirrored bulkhead
- Samsung BluRay DVD

---

## VIP Head

---

- Amtico teak and holly flooring
- Brass faucet
- Granite countertop
- Teak vanity
- Mirrored vanity
- Techma head
- Full shower stall
- Overhead hatch
- Linen closet

---

## Guest Stateroom, Port

---

- Twin bunks - custom crossover
- Upgraded mattress
- Hanging locker
- Custom wallpaper and upgraded finishes
- Teak and holly floor
- Overhead hatch

---

## Guest Head, Port

---

- Amtico teak and holly flooring
- Brass faucet
- Granite countertop
- Teak vanity

- Mirrored vanity
- Techma head
- Full shower stall

---

## Aft Crew Stateroom

---

- Amtico teak and holly flooring
- Washer and dryer
- Bunks with upgraded mattresses
- Engine room door and private access
- Nightstand with drawers
- Hanging locker

---

## Crew Head

---

- Corian countertop with bone sink
- Brass faucet
- Teak vanity
- Mirrored vanity
- Full shower stall

---

## Enclosed Flybridge

---

- Spiral staircase
- Teak coffee table
- 20" Samsung LED TV
- Teak and holly flooring
- L-Shaped settee/converts to bed
- Custom Stidd helm chair in black
- Port and starboard bench seat
- Bow thruster
- Electronic trolling valves
- Aft bridge seating
- Aft control station with full controls
- Rupp Outriggers
- Aft cabinet with storage and refrigerator
- Overhead hatch

---

## Electronics

---

- Furuno 500 auto pilot with 2nd station
- Elbex camera system
- (2) Furuno Navnet chart plotter/GPS
- Furuno color video sounder
- Furuno 72 mile radar
- KVH Tracvision satellite TV system
- (2) Icom VHF radio M-604
- ACR searchlight
- Furuno RD30 depth finder
- Trim tab indicators
- Sirius XM Radio
- (2) VEI Displays

## Cockpit

---

- Mezzanine seating
- Transom door/gate
- Storage lockers under coaming
- Fresh and saltwater wash downs
- Teak cockpit sole
- Cockpit controls
- Teak covering boards
- Awlgripped lazarette
- Electric salon door
- Refrigerated step box
- (2) Fridge/freezer in mezzanine
- Live well in transom
- (6) Rod holders in covering boards
- (3) Rod holders in each haunch

## Engine & Mechanical

---

- Twin MTU 16V2000 M93 2400 HP engines with 400 original hours
- Awlgripped thru hulls & sea strainers
- All pumps painted snow white
- Awlgripped forward bilge
- Oil change system with line to cockpit
- Dual power steering pumps
- Back up air conditioning pump
- Auxiliary DC fresh water pump

- Access door to crew quarters
- Clear acrylic shaft log covers
- Gas-Water separators for both generators
- Fuel polishing system
- Charles auto phase shore power transformer
- Headhunter fresh water pump
- Delta T System
- Dual racor fuel filters
- (2) Onan generators

## Hull/Deck/Exterior

---

- Custom Hull color
- Hydraulic bow thruster
- Bow pulpit with anchor
- Freshwater wash down inside anchor locker
- Rub rail painted to match gel coat
- Lewmar V4 hydraulic windlass with gypsy
- Under mounted side hand rails with 18" wraparound bridge
- Underwater exhaust system
- Deck hatches for ventilation & natural light
- Prop pockets for reduced draft
- Underwater lights
- Additional fuel for a total of 3000 gallons

## Исключения

---

При продаже яхты исключаются личные вещи владельца.

## Отказ от ответственности

---

Компания предоставляет описание судна или яхты добросовестно, но не может гарантировать точность этой информации, а также не ручается за техническое состояние. Покупатель должен проинструктировать своих агентов или оценщиков исследовать представленную информацию более подробно, по собственному желанию. Продажа судна или яхты, изменение цены или снятие с продажи будет происходить без предварительного уведомления.

# ФОТОГРАФИИ

Salon



Salon



Salon



Salon



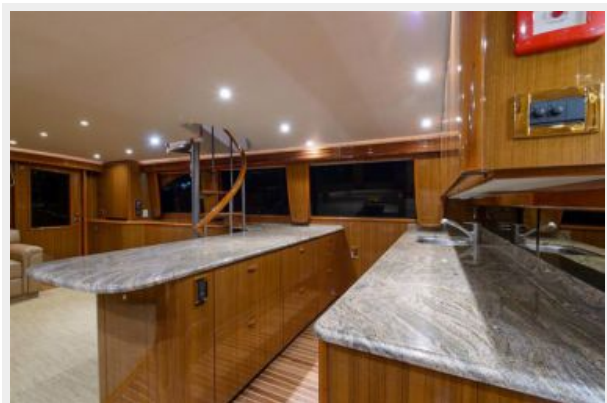
Galley



Galley



**Galley**



**Dinete**



**Companionway**



**Day Head**



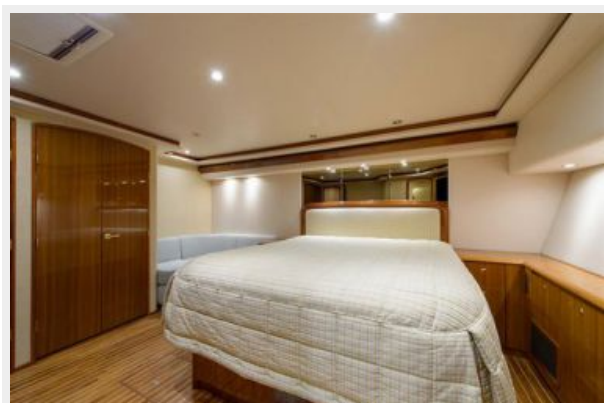
**Laundry Center**



**Master Stateroom**



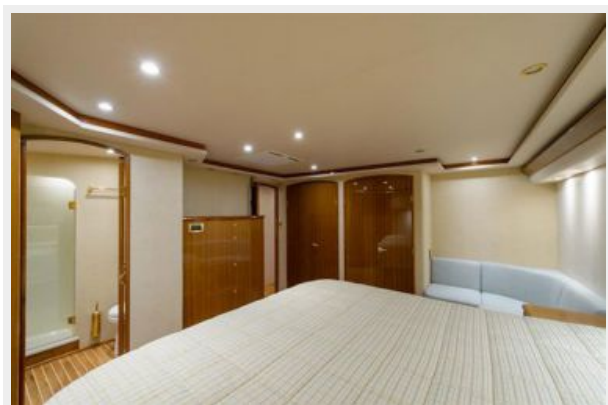
**Master Stateroom**



**Master Stateroom**



**Master Stateroom**



**Master Stateroom**



**Master Head**

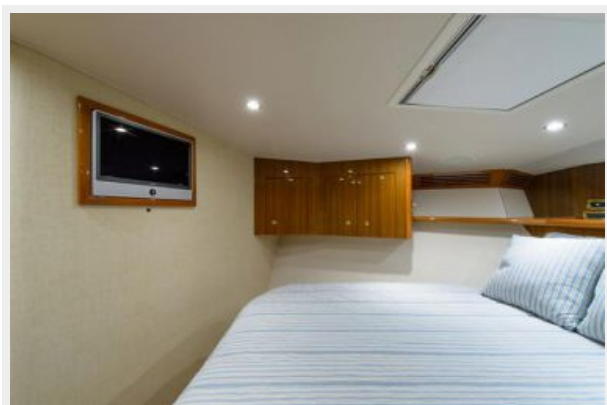


**Forward Stateroom**





**Forward Stateroom**



**Forward Stateroom**



**Forward Head**



**Guest Stateroom**



**Guest Head**



**Crew Head**



**Crew Quarters**



**Crew Quarters**



**Enclosed Flybridge**



**Enclosed Flybridge**



**Enclosed Flybridge**



**Enclosed Flybridge**



**Enclosed Flybridge**



**Flybridge Aft Deck**



**Flybridge Aft Deck**



**Flybridge Aft Deck**



**Flybridge Aft Deck**



**Cockpit**



**Cockpit**



**Cockpit**



**Cockpit**



**Cockpit**



**Engine Room**



**Engine Room**



**Engine Room**



**Engine Room**



**Engine Room**



**Engine Room**



**Bow Profile**



**Stern Profile**



# КОНТАКТЫ

---

Андрей Шестаков (Andrey Shestakov) – ведущий яхтенный брокер отдела продаж яхт и судов компании Shestakov Yacht Sales Inc. Официальный представитель Shestakov Yacht Sales Inc. для русскоговорящих клиентов в центральном офисе компании в Майами/Форт Лодердейл/Флорида/США.

## Контактная информация

---

Email: [andrey@shestakovyachtsales.com](mailto:andrey@shestakovyachtsales.com)

Web: [shestakovyachtsales.com](http://shestakovyachtsales.com)

## Телефоны

---

Краснодарский край: **+7(918)465-66-44**

США, Майами, Флорида: **+1(954)274-4435**

## Время работы

---

Понедельник – Суббота: **9:00 - 21:00**  
EDT

Воскресенье: **Закрето**

## Адрес

---



Harbour Towne Marina, 850 NE 3rd St,  
STE 213, Dania, FL 33004