

LADY OF VEN — PRINCESS YACHTS



Builder: PRINCESS YACHTS

Year Built: 1986

Model: Motor Yacht

Price: PRICE ON APPLICATION

Location: United Kingdom

LOA: 44' 5" (13.54m)

Beam: 13' 9" (4.19m)

Min Draft: 7' 2" (2.18m)

Cruise Speed: 18 Kts. (21 MPH)

Max Speed: 22 Kts. (25 MPH)

Our experienced yacht broker, Andrey Shestakov, will help you choose and buy a yacht that best suits your needs **LADY OF VEN — PRINCESS YACHTS** from our catalogue. Presently, at Shestakov Yacht Sales Inc., we have a wide variety of yachts available on our sale's list. We also work in close contact with all the big yacht manufacturers from all over the world.

If you would like to buy a yacht **LADY OF VEN — PRINCESS YACHTS** or would like help answering any questions concerning purchasing, selling or chartering a yacht, please call **+1(954)274-4435**

TABLE OF CONTENTS

TABLE OF CONTENTS	2
SPECIFICATIONS	3
Overview	3
Basic Information	3
Dimensions	3
Speed, Capacities and Weight	3
Accommodations	3
Hull and Deck Information	4
Engine Information	4
DETAILED INFORMATION	5
Construction	5
Machinery	5
Electrical Systems	6
Plumbing Systems	7
Tankage	7
Navigation Equipment	7
Domestic Equipment	8
Accommodation	9
Deck Equipment	9
Exclusions	9
Disclaimer	9
PHOTOS	11
CONTACTS	17
Contact details	17
Telephones	17
Office hours	17
Address	17

SPECIFICATIONS

Overview

This 1986 Princess 45 is one of the great Olesinski cruising hulls. Running on twin 306HP Volvo Penta diesels, with Onan generator, Cruisair air-co and Eberspacher diesel heating - this is a huge amount of boat for a small ask. The Vendor of this Princess 45 is offering to cover the cost of 6 months berthing at a Solent marina, so the first 6 months of ownership are largely covered for any prospective Owner.

Basic Information

Category: Motor Yacht

Model Year: 1986

Year Built: 1986

Country: United Kingdom

Dimensions

LOA: 44' 5" (13.54m)

Beam: 13' 9" (4.19m)

Min Draft: 7' 2" (2.18m)

Speed, Capacities and Weight

Cruise Speed: 18 Kts. (21 MPH)

Max Speed: 22 Kts. (25 MPH)

Displacement: 27998.707274 Pounds

Water Capacity: 212.65850186 Gallons

Fuel Capacity: 414.221777536 Gallons

Accommodations

Total Cabins: 2

Total Berths: 9

Total Heads: 2

Hull and Deck Information

Hull Material: GRP

Deck Material: GRP

Hull Designer: Bernard Olesinski

Engine Information

Engines: 2

Manufacturer: Volvo

Model: TAMD 70 E

Engine Type: Inboard

Fuel Type: Diesel

DETAILED INFORMATION

Construction

Overall Measured Length: 46'8" inc. 1'2" pulpit & 1'3" bathing platform; beam 14'1"

RCD Status: The yacht conforms with the essential safety requirements of Directive 94/25EC (Recreational Craft Directive) and is categorized as 'B'

Hull, Deck & Superstructure Construction:

- White GRP hull, decks and superstructure.
- 2001 – full Blakes system hull epoxy.
- Simulated teak side decks and aft cockpit deck (2011).

Machinery

Engine & Gearboxes:

- 2 x Volvo TAMD 70 E 306hp @ 2500 RPM 6-cylinder, turbo-charged diesel engines , with aftercoolers
- Conventional shaft drives to 4-bladed bronze propellers via Twin Disc MG507 reduction gearboxes
- Volvo Penta EDC single lever throttle/gear controls

Maintenance & Performance:

- Indicated hours at 12.09.2013 - 1057 on both engines.
- Max speed c. 22 knots.
- Cruise speed c. 18 knots.
- New cutlass bearings March 2013m exhaust elbows replaced 2008 on both engines.

Propulsion & Steering:

- Sleipner Side-Power bow-thruster with dual station controls
- Electro-hydraulic trim tabs
- Hydraulic steering to twin rudders

Electrical Systems

Voltage Systems:

- 24V ships battery system

Battery Banks:

- 4 x domestic 12V batteries (forward of stbd engine) – wired as 24V (May 2013)
- 2 x engine cranking batteries (forward of port engine) – wired as 24V
- 1 x generator starting battery (aft lazarette)

Battery Chargers:

- Automatic
- Solar panel for exclusive of generator battery.

Alternators:

- Twin Volvo Penta units – one to each engine .

Generator:

- Upgrade Onan 7kVa unit in sound shield (2002).
- 548 hours run to date (12.09.2013).
- Fitted to aft lazarette – (port side), individual fuel filter and cranking battery.

Shore Power:

- 240v Shore support system.

Plumbing Systems

Fresh Water & Water Heating System:

- Pressurized hot and cold water system, with heating via engine heat exchanger and 240V immersion

Bilge Pumps:

- Three automatic electric bilge pumps (submersible).
- One manual bilge pump (switchable between engine, forward and aft space bilges)

Tankage

Fuel:

- Total capacity of 1,568 litres (344 gallons) in two tanks outboard of main engines.

Fresh water:

- Total capacity of 805 litres (178 gallons) in two polypropylene Tec Tanks (new Dec. 2012).

Navigation Equipment

Lower helm position:

- Furuno Daylight radar.
- Raytheon 7000 autopilot.
- B&G Hercules 2 Depth.
- VHF radio
- Furuno LC-90 position indicator.

- Trim tab controls

Fly-bridge helm position:

- Trim tab controls

Domestic Equipment

Galley:

- Light-coloured composite worktop
- 2 ring electric and 2 gas burner Optimus hob
- Panasonic microwave
- 12/240V refrigerator with ice compartment
- Twin stainless steel sinks with mixer tap
- Plentiful locker, cupboard and drawer stowage
- 240V power points
- Water tank gauge

Heads/Showers:

- 2 x heads/shower compartments (one en-suite to forward master cabin, one guest head/shower)

Heating & Ventilation:

- Cruisair air-conditioning (with reverse cycle heating) –I controls to saloon and forward cabin.
- Eberspacher cabin heating throughout; unit overhauled by makers in 2012.

Lighting:

- 12V lighting throughout.

Accommodation

Summary of Accommodation:

- 9 berths in 2 cabins (forward master double, two single bunks to starboard cabin, converting lower dinette and conversion saloon and single berth to saloon).
- Natural light cherry woodwork.
- Blue fabric upholstery to saloon and dinette.
- Cream carpets to saloon and cabins.

Deck Equipment

Anchoring & Mooring Equipment:

- Delta anchor with electric anchor winch
- Two electric davits to transom.
- Ladder to fly-bridge.

Covers, Canvas & Cushions:

- Deck cushions in white vinyl.

Fire-fighting equipment:

- Manual fire extinguishers

Exclusions

Owner's personal belongings.

Disclaimer

The Company offers the details of this vessel or yacht in good faith but cannot guarantee or warrant the accuracy of this information nor warrant the condition of the vessel. A buyer should instruct his representatives, agents, or his surveyors, to investigate such details as the buyer desires validated. This vessel or yacht is offered subject to prior sale, price change, or withdrawal

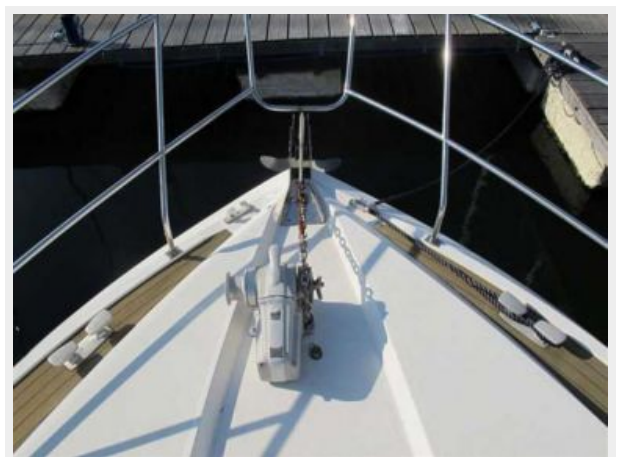
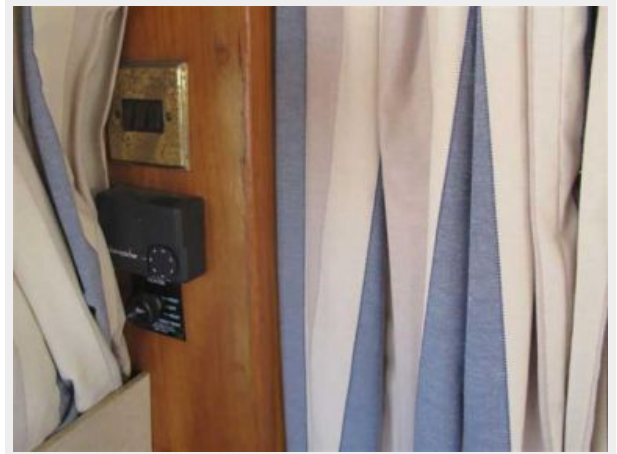
without notice.

PHOTOS

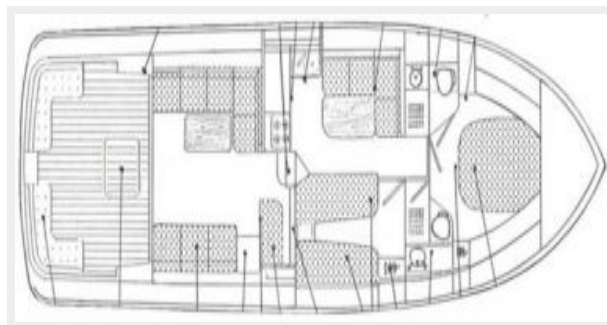












CONTACTS

Andrey Shestakov, leading yacht broker of the sales department of Shestakov Yacht Sales Inc. Shestakov Yacht Sales Inc., the official representative of the Miami/Fort Lauderdale FL headquarters.

Contact details

Email: andrey@shestakovyachtsales.com

Web: shestakovyachtsales.com/en/

Telephones

USA: +1(954)274-4435

Office hours

Monday – Saturday: **9:00 - 21:00** EDT

Sunday: **closed**

Address



Harbour Towne Marina, 850 NE 3rd St,
STE 213, Dania, FL 33004