

TOMAHAWK — NAUTOR'S SWAN



Builder: NAUTOR'S SWAN

Year Built: 1979

Model: Cruising Sailboat

Price: PRICE ON APPLICATION

Location: United Kingdom

LOA: 38' 3" (11.66m)

Beam: 11' 6" (3.51m)

Min Draft: 6' 6" (1.98m)

Our experienced yacht broker, Andrey Shestakov, will help you choose and buy a yacht that best suits your needs **TOMAHAWK — NAUTOR'S SWAN** from our catalogue. Presently, at Shestakov Yacht Sales Inc., we have a wide variety of yachts available on our sale's list. We also work in close contact with all the big yacht manufacturers from all over the world.

If you would like to buy a yacht **TOMAHAWK — NAUTOR'S SWAN** or would like help answering any questions concerning purchasing, selling or chartering a yacht, please call **+1(954)274-4435**

TABLE OF CONTENTS

TABLE OF CONTENTS	2
SPECIFICATIONS	4
Overview	4
Basic Information	4
Dimensions	4
Speed, Capacities and Weight	4
Accommodations	4
Hull and Deck Information	4
Engine Information	5
DETAILED INFORMATION	6
Construction	6
Machinery	6
Electrical Systems	7
Plumbing Systems	8
Tankage	8
Accommodation	9
Domestic Equipment	9
Navigation Equipment	9
Deck Equipment	10
Owner's Comments	12
Broker's Comments	13
Exclusions	13
Disclaimer	13
PHOTOS	14
CONTACTS	21
Contact details	21
Telephones	21
Office hours	21

Address

21

SPECIFICATIONS

Overview

The very last S&S Swan 38 to be launched. Well maintained and updated including a recent replacement engine and offered for sale at a very realistic price.

Basic Information

Category: Cruising Sailboat

Model Year: 1979

Year Built: 1979

Country: United Kingdom

Dimensions

LOA: 38' 3" (11.66m)

LWL: 28' 8" (8.74m)

Beam: 11' 6" (3.51m)

Min Draft: 6' 6" (1.98m)

Speed, Capacities and Weight

Displacement: 18739.29227 Pounds

Water Capacity: 53.891098608 Gallons

Fuel Capacity: 30.115613928 Gallons

Accommodations

Total Cabins: 2

Total Berths: 9

Total Heads: 1

Hull and Deck Information

Hull Material: GRP

Deck Material: GRP

Hull Finish: Stainless Steel

Hull Designer: Sparkman & Stephens

Engine Information

Engines: 1

Manufacturer: Volvo

Model: D1-30

Engine Type: Inboard

Fuel Type: Diesel

DETAILED INFORMATION

Construction

RCD Status: It is our understanding that the yacht is exempt from the essential safety requirements of Directive 94/25EC (Recreational Craft Directive) and is categorised A – “Ocean” as she was first placed into use with EU waters prior to 16th June 1998.

Hull, Deck & Superstructure Construction:

- White GRP hull, deck and superstructure
- Full osmosis treatment – 1999
- Further epoxy coatings added as preventative measure – 2006
- Hull cut-back and polished – 2015
- International Micron antifoul (2-coats) applied plus fresh anodes - 2015
- Teak laid deck (cleaned, checked and dowels replaced where necessary – 2015)

Keel & Rudder:

- Ballast fin keel cast in lead with antimony and secured with stainless steel bolts
- Skeg hung rudder

Machinery

Engine & Gearboxes:

- Volvo D1-30 3-cylinder naturally aspirated diesel engine producing approx 30hp @ 3,200rpm - 2009
- Fresh water cooling system

Maintenance & Performance:

- Approx engine hours: Approx. 336 at April 2015
- Date of last engine service: August 2014

- Economic cruising speed – approx 6 knots
- Maximum speed – approx 7 knots

Propulsion & Steering:

- Shaft drive – cleaned 2015
- 3-bladed Maxprop – burnished 2015
- Wheel steering – Elk hide replaced 2001
- Emergency tiller
- Steering cables checked - 2015

Electrical Systems

Voltage Systems:

- 12vDC domestic system with 220vAC via direct supply

Battery Banks:

- 1 x engine start battery - 2014
- 2 x service batteries joined in parallel 12vDC – 2014
- BEP master switches / smart relay and cabling - 2008

Battery Charger:

- Battery charger – 2004

Alternators:

- 115Amp engine-mounted alternator - 2009

Shorepower:

- Shorepower connection – 2005

Plumbing Systems

Fresh Water & Water Heating System:

- 12vDC pressurised water system (pump replaced 2009)
- Hot water supplied via engine driven calorifier or via 220vAC immersion heater from shorepower

Water Supplies:

- Pressurised hot & cold water supplied to galley and heads
- New filter fitted – Jan 2014

Bilge Pumps:

- 2x Manual bilge pumps
- Electric bilge pump

Grey & Black Water:

- Grey and black water discharges overboard

Seacocks:

- Seacocks removed, regreased and refitted – 2014

Tankage

- Fuel capacity – approx 114 litres (30 gallons) in 1x stainless steel tank
- Fresh water capacity – approx 204 litres (53 gallons) in 1x stainless steel tank

Accommodation

Summary of Accommodation:

- Up to 9 berths in forward v-berth cabin, saloon settees and pilot berths and aft cabin single berths
- High quality teak joinery
- Cream vinyl headlinings
- Teak battened hull linings
- Varnished teak & holly soleboards
- Heads overhauled in January 2015.

Domestic Equipment

Galley:

- 2 burner gas hob and oven
- Fridge with 12v compressor
- Sink with hot & cold pressurised water supply

Heads/Showers:

- Baby Blake Marine WC – overhauled 2011
- Handbasin with pressurised water supply and shower

Entertainment:

- Radio/CD player with speakers

Navigation Equipment

- B&G Hydro 2000 autopilot
- Garmin chart plotter – 2008
- Furuno GPS

- B&G depth display
- B&G wind speed display
- B&G wind direction display
- B&G magnified wind direction display
- B&G speed/log display
- Sestrel steering compass
- Clock, barometer and hygrometer

Communications Equipment:

- Icom VHF

Deck Equipment

Rig:

- Nautor aluminium alloy keel-stepped masthead-rigged mast (rig inspected by Selden agents – 2013)
- Aluminium alloy boom
- Single set of inline spreaders
- Stainless steel rigging (including forestay) – 2014
- Aluminium rigging screw protectors
- Rig-tuned - 2013
- Mast collar replaced 2014
- Tuff Luff
- Selden Furlex 300S genoa furler (2006) – overhauled 2014
- Inner forestay
- Slab reefing mainsail system
- Full spinnaker gear with twin pole (spinnaker pole uphaul and spinnaker halyard replaced 2014)
- Genoa sheets replaced 2014

- Topping lift replaced 2014
- Vang replaced 2014

Winches:

- 2x Lewmar 48 3-speed primary winches
- 2x Lewmar 42 2-speed spinnaker winches
- 4x Lewmar halyard winches

Sails:

- All sails from Sanders Sails in Lymington. Consisting of:-
- Dacron mainsail – 2008
- Pentex No.1 genoa (high wind) – 2003
- Dacron No.1 genoa (light wind) – 2006
- Dacron No.2 genoa – 2006
- Dacron No.3/4 blade jib – 2006
- Nylon symmetrical spinnaker (high wind) – 2003
- Nylon symmetrical spinnaker (low wind) - 2008

General:

- Pushpit, pulpit and guardrail stanchions in stainless steel
- Cockpit table
- Bathing ladder

Anchoring & Mooring Equipment:

- Lofrans 12vDC electric anchor windlass
- 45lbs CQR anchor with 20m chain

- Danforth kedge anchor with 30m of platted warp
- Warps and fenders

Covers, Canvas & Cushions:

- Blue canvas sprayhood – 2010
- Blue canvas mainsail cover – 2008
- Winter cover
- Blue canvas wheel cover
- White cockpit seat cushion

Tender:

- Avon Redstart inflatable dinghy with oars, pump and repair kit

Safety Equipment:

- 6-man liferaft – serviced 07/13
- Lifebuoy with light & drogue
- Offshore flarepack – 2013
- Webbing jackstays
- Radar reflector at masthead

Fire Fighting:

- 2x manual fire extinguishers – 2013
- 1x fire blanket

Owner's Comments

We purchased TOMAHAWK in July 2002 and she has been based in Guernsey C.I. since that

date. She has been an excellent cruiser / racer and has been lightly used, carefully maintained by us and winterised ashore each year.

She has superb lines, a delight to sail and exudes quality and comfort. She has excellent sea keeping qualities and does not slam into heavy seas. She is very capable for the experienced skipper who wants to cover distances.

She had osmosis treatment at Hamble Yachts Services in 1999, and as a further preventative measure was soda-blasted back to gelshield (removing her antifoul coatings), dried under cover and a further 2 coats of epoxy applied in 2006. The topsides are original gelcoat and are compounded and polished each year. Prop & anodes refurbished and replaced over winter months. The teak decks have been overhauled by a local boatbuilder every two seasons.

The new Volvo engine was fitted in October 2008 by the local Volvo main agent and has been serviced by them on an annual basis ever since. The engine has covered just 336 hours since fitment.

A set of line drawings are included in the sale to allow a new owner to commission a scale model if desired.

Broker's Comments

One of the most popular of all the Nautor models, 116 were built between 1974 and 1979. TOMAHAWK is hull number 116 and therefore the very last of her type to sail out of the factory.

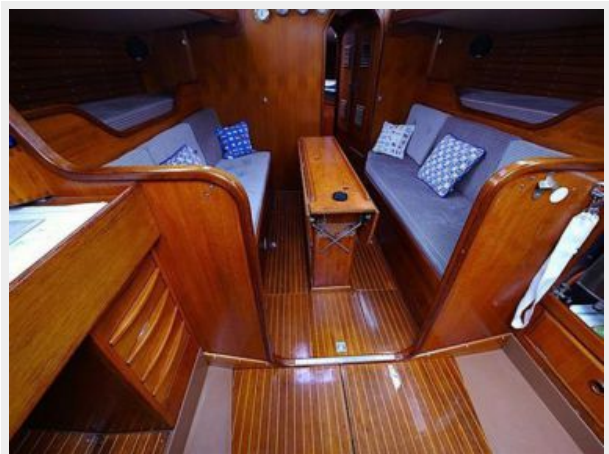
Exclusions

Owner's personal belongings.

Disclaimer

The Company offers the details of this vessel or yacht in good faith but cannot guarantee or warrant the accuracy of this information nor warrant the condition of the vessel. A buyer should instruct his representatives, agents, or his surveyors, to investigate such details as the buyer desires validated. This vessel or yacht is offered subject to prior sale, price change, or withdrawal without notice.

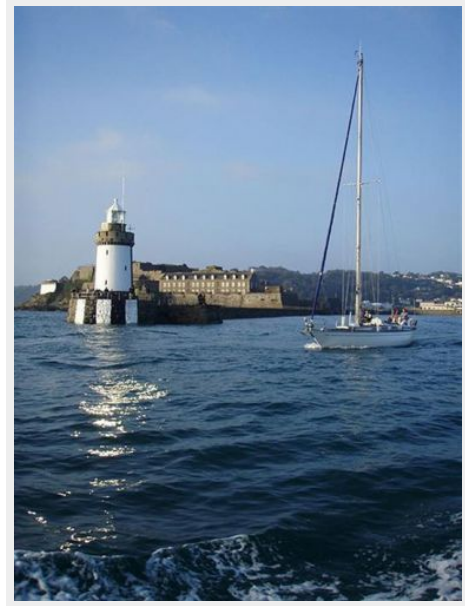
PHOTOS

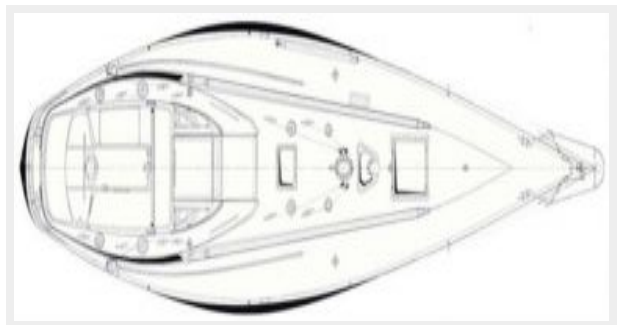
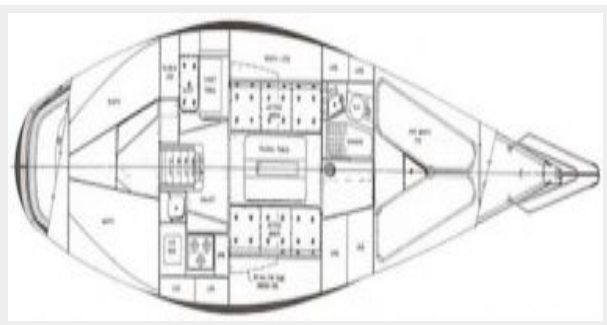
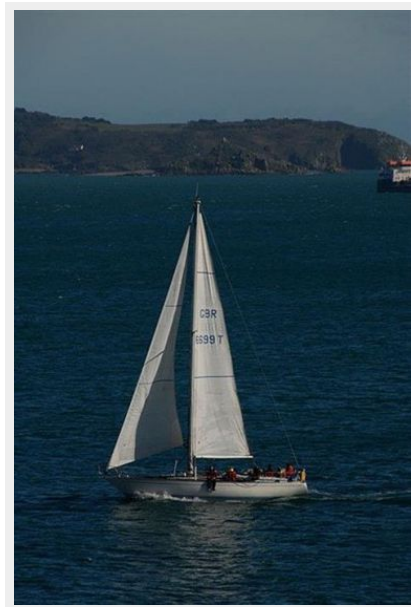
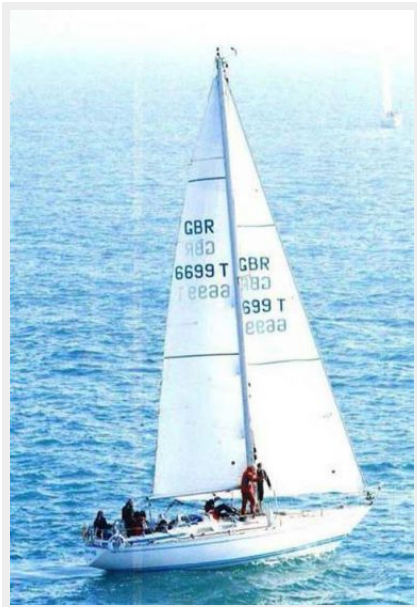


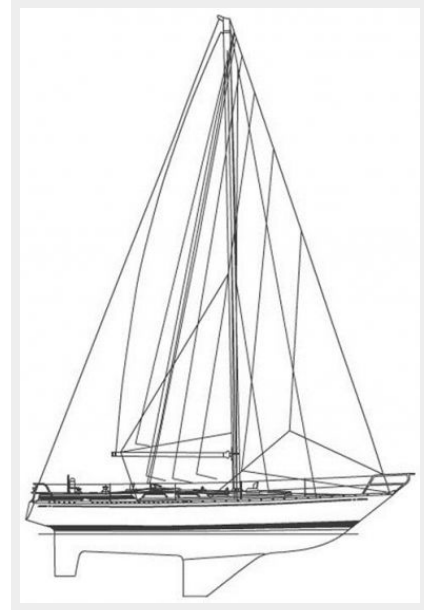
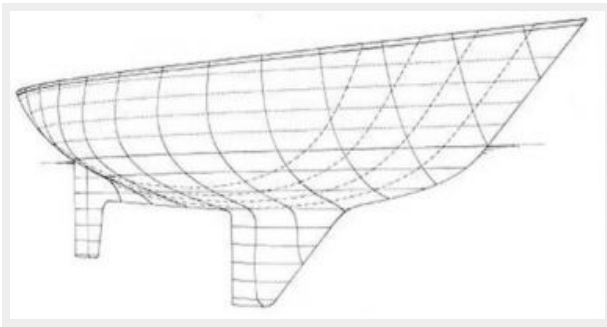
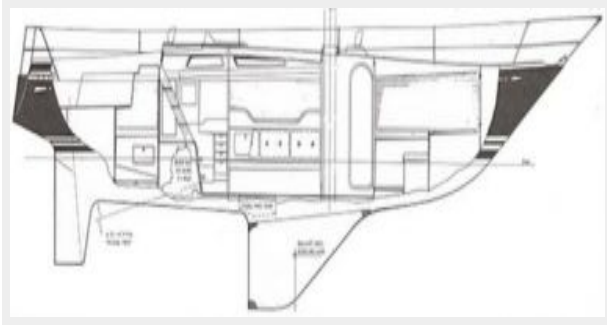












CONTACTS

Andrey Shestakov, leading yacht broker of the sales department of Shestakov Yacht Sales Inc. Shestakov Yacht Sales Inc., the official representative of the Miami/Fort Lauderdale FL headquarters.

Contact details

Email: andrey@shestakovyachtsales.com

Web: shestakovyachtsales.com/en/

Telephones

USA: +1(954)274-4435

Office hours

Monday – Saturday: **9:00 - 21:00** EDT

Sunday: **closed**

Address



Harbour Towne Marina, 850 NE 3rd St,
STE 213, Dania, FL 33004