

ТОМАНАВК — NAUTOR'S SWAN



Судостроитель: NAUTOR'S SWAN

Год постройки: 1979

Модель: Крейсерская яхта

Цена: **ЦЕНА ЯХТЫ ПО ЗАПРОСУ**

Местонахождение: United Kingdom

Длина общая: 38' 3" (11.66m)

Ширина: 11' 6" (3.51m)

Мин. осадка: 6' 6" (1.98m)

Купить **ТОМАНАВК — NAUTOR'S SWAN** а также выбрать подходящую вам яхту из нашего каталога яхт вам поможет опытный яхтенный брокер Андрей Шестаков. На сегодняшний день компания **Shestakov Yacht Sales Inc.** имеет большое количество яхт в собственном списке продаж, а также тесно сотрудничает со всеми крупными яхтенными производителями по всему миру.

Для того чтобы купить яхту **ТОМАНАВК — NAUTOR'S SWAN** а также проконсультироваться по любому вопросу связанному с покупкой, продажей, чартером яхт позвоните по телефону **+7(918)465-66-44**.

ОГЛАВЛЕНИЕ

ОГЛАВЛЕНИЕ	2
ХАРАКТЕРИСТИКИ	4
Обзор	4
Основная информация	4
Размеры	4
Скорость, вместимость и масса	4
Размещение	4
Корпус и палуба	5
Информация о двигателе	5
ПОДРОБНОЕ ОПИСАНИЕ	6
Construction	6
Machinery	6
Electrical Systems	7
Plumbing Systems	8
Tankage	8
Accommodation	9
Domestic Equipment	9
Navigation Equipment	9
Deck Equipment	10
Owner's Comments	12
Broker's Comments	13
Исключения	13
Отказ от ответственности	13
ФОТОГРАФИИ	14
КОНТАКТЫ	21
Контактная информация	21
Телефоны	21
Время работы	21

Адрес

21

ХАРАКТЕРИСТИКИ

Обзор

The very last S&S Swan 38 to be launched. Well maintained and updated including a recent replacement engine and offered for sale at a very realistic price.

Основная информация

Тип судна: Крейсерская яхта

Модельный год: 1979

Год постройки: 1979

Страна: United Kingdom

Размеры

Длина общая: 38' 3" (11.66m)

Длина по ватерлинии: 28' 8" (8.74m)

Ширина: 11' 6" (3.51m)

Мин. осадка: 6' 6" (1.98m)

Скорость, вместимость и масса

Водоизмещение: 18739.29227 Pounds

Вместимость воды: 53.891098608
Gallons

Объем топливного бака: 30.115613928
Gallons

Размещение

Всего кают: 2

Всего коек: 9

Всего ком. состава: 1

Корпус и палуба

Материал корпуса: GRP

Материал палубы: GRP

Отделка корпуса: Stainless Steel

Дизайнер корпуса: Sparkman & Stephens

Информация о двигателе

Двигатели: 1

Производитель: Volvo

Модель: D1-30

Тип двигателя: Inboard

Тип топлива: Diesel

ПОДРОБНОЕ ОПИСАНИЕ

Construction

RCD Status: It is our understanding that the yacht is exempt from the essential safety requirements of Directive 94/25EC (Recreational Craft Directive) and is categorised A – “Ocean” as she was first placed into use with EU waters prior to 16th June 1998.

Hull, Deck & Superstructure Construction:

- White GRP hull, deck and superstructure
- Full osmosis treatment – 1999
- Further epoxy coatings added as preventative measure – 2006
- Hull cut-back and polished – 2015
- International Micron antifoul (2-coats) applied plus fresh anodes - 2015
- Teak laid deck (cleaned, checked and dowels replaced where necessary – 2015)

Keel & Rudder:

- Ballast fin keel cast in lead with antimony and secured with stainless steel bolts
- Skeg hung rudder

Machinery

Engine & Gearboxes:

- Volvo D1-30 3-cylinder naturally aspirated diesel engine producing approx 30hp @ 3,200rpm - 2009
- Fresh water cooling system

Maintenance & Performance:

- Approx engine hours: Approx. 336 at April 2015
- Date of last engine service: August 2014

- Economic cruising speed – approx 6 knots
- Maximum speed – approx 7 knots

Propulsion & Steering:

- Shaft drive – cleaned 2015
- 3-bladed Maxprop – burnished 2015
- Wheel steering – Elk hide replaced 2001
- Emergency tiller
- Steering cables checked - 2015

Electrical Systems

Voltage Systems:

- 12vDC domestic system with 220vAC via direct supply

Battery Banks:

- 1 x engine start battery - 2014
- 2 x service batteries joined in parallel 12vDC – 2014
- BEP master switches / smart relay and cabling - 2008

Battery Charger:

- Battery charger – 2004

Alternators:

- 115Amp engine-mounted alternator - 2009

Shorepower:

- Shorepower connection – 2005

Plumbing Systems

Fresh Water & Water Heating System:

- 12vDC pressurised water system (pump replaced 2009)
- Hot water supplied via engine driven calorifier or via 220vAC immersion heater from shorepower

Water Supplies:

- Pressurised hot & cold water supplied to galley and heads
- New filter fitted – Jan 2014

Bilge Pumps:

- 2x Manual bilge pumps
- Electric bilge pump

Grey & Black Water:

- Grey and black water discharges overboard

Seacocks:

- Seacocks removed, regreased and refitted – 2014

Tankage

- Fuel capacity – approx 114 litres (30 gallons) in 1x stainless steel tank
- Fresh water capacity – approx 204 litres (53 gallons) in 1x stainless steel tank

Accommodation

Summary of Accommodation:

- Up to 9 berths in forward v-berth cabin, saloon settees and pilot berths and aft cabin single berths
- High quality teak joinery
- Cream vinyl headlinings
- Teak battened hull linings
- Varnished teak & holly soleboards
- Heads overhauled in January 2015.

Domestic Equipment

Galley:

- 2 burner gas hob and oven
- Fridge with 12v compressor
- Sink with hot & cold pressurised water supply

Heads/Showers:

- Baby Blake Marine WC – overhauled 2011
- Handbasin with pressurised water supply and shower

Entertainment:

- Radio/CD player with speakers

Navigation Equipment

- B&G Hydro 2000 autopilot
- Garmin chart plotter – 2008
- Furuno GPS

- B&G depth display
- B&G wind speed display
- B&G wind direction display
- B&G magnified wind direction display
- B&G speed/log display
- Sestrel steering compass
- Clock, barometer and hygrometer

Communications Equipment:

- Icom VHF

Deck Equipment

Rig:

- Nautor aluminium alloy keel-stepped masthead-rigged mast (rig inspected by Selden agents – 2013)
- Aluminium alloy boom
- Single set of inline spreaders
- Stainless steel rigging (including forestay) – 2014
- Aluminium rigging screw protectors
- Rig-tuned - 2013
- Mast collar replaced 2014
- Tuff Luff
- Selden Furlex 300S genoa furler (2006) – overhauled 2014
- Inner forestay
- Slab reefing mainsail system
- Full spinnaker gear with twin pole (spinnaker pole uphaul and spinnaker halyard replaced 2014)
- Genoa sheets replaced 2014

- Topping lift replaced 2014
- Vang replaced 2014

Winches:

- 2x Lewmar 48 3-speed primary winches
- 2x Lewmar 42 2-speed spinnaker winches
- 4x Lewmar halyard winches

Sails:

- All sails from Sanders Sails in Lymington. Consisting of:-
- Dacron mainsail – 2008
- Pentex No.1 genoa (high wind) – 2003
- Dacron No.1 genoa (light wind) – 2006
- Dacron No.2 genoa – 2006
- Dacron No.3/4 blade jib – 2006
- Nylon symmetrical spinnaker (high wind) – 2003
- Nylon symmetrical spinnaker (low wind) - 2008

General:

- Pushpit, pulpit and guardrail stanchions in stainless steel
- Cockpit table
- Bathing ladder

Anchoring & Mooring Equipment:

- Lofrans 12vDC electric anchor windlass
- 45lbs CQR anchor with 20m chain

- Danforth kedge anchor with 30m of platted warp
- Warps and fenders

Covers, Canvas & Cushions:

- Blue canvas sprayhood – 2010
- Blue canvas mainsail cover – 2008
- Winter cover
- Blue canvas wheel cover
- White cockpit seat cushion

Tender:

- Avon Redstart inflatable dinghy with oars, pump and repair kit

Safety Equipment:

- 6-man liferaft – serviced 07/13
- Lifebuoy with light & drogue
- Offshore flarepack – 2013
- Webbing jackstays
- Radar reflector at masthead

Fire Fighting:

- 2x manual fire extinguishers – 2013
- 1x fire blanket

Owner's Comments

We purchased TOMAHAWK in July 2002 and she has been based in Guernsey C.I. since that

date. She has been an excellent cruiser / racer and has been lightly used, carefully maintained by us and winterised ashore each year.

She has superb lines, a delight to sail and exudes quality and comfort. She has excellent sea keeping qualities and does not slam into heavy seas. She is very capable for the experienced skipper who wants to cover distances.

She had osmosis treatment at Hamble Yachts Services in 1999, and as a further preventative measure was soda-blasted back to gelshield (removing her antifoul coatings), dried under cover and a further 2 coats of epoxy applied in 2006. The topsides are original gelcoat and are compounded and polished each year. Prop & anodes refurbished and replaced over winter months. The teak decks have been overhauled by a local boatbuilder every two seasons.

The new Volvo engine was fitted in October 2008 by the local Volvo main agent and has been serviced by them on an annual basis ever since. The engine has covered just 336 hours since fitment.

A set of line drawings are included in the sale to allow a new owner to commission a scale model if desired.

Broker's Comments

One of the most popular of all the Nautor models, 116 were built between 1974 and 1979. ТОМАНАВК is hull number 116 and therefore the very last of her type to sail out of the factory.

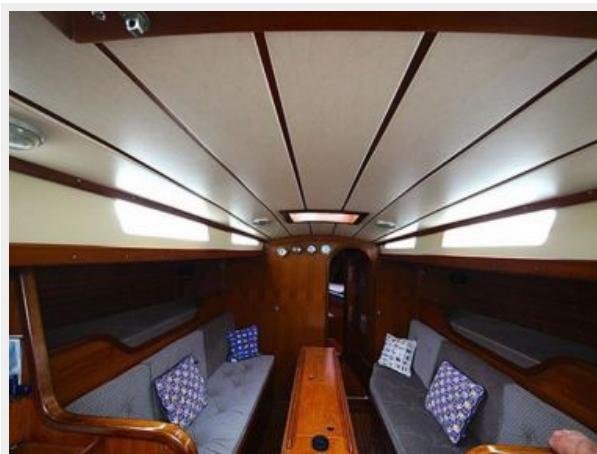
Исключения

При продаже яхты исключаются личные вещи владельца.

Отказ от ответственности

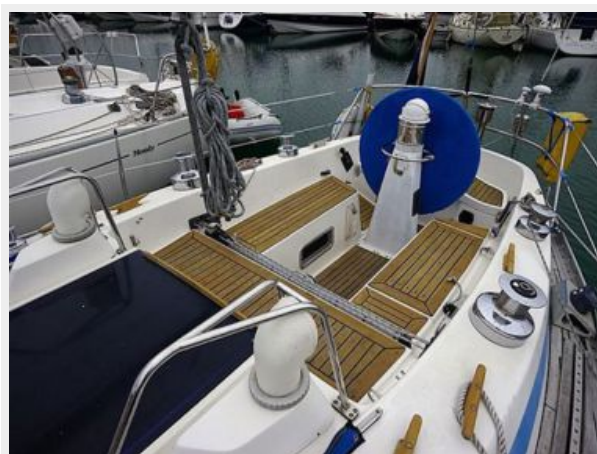
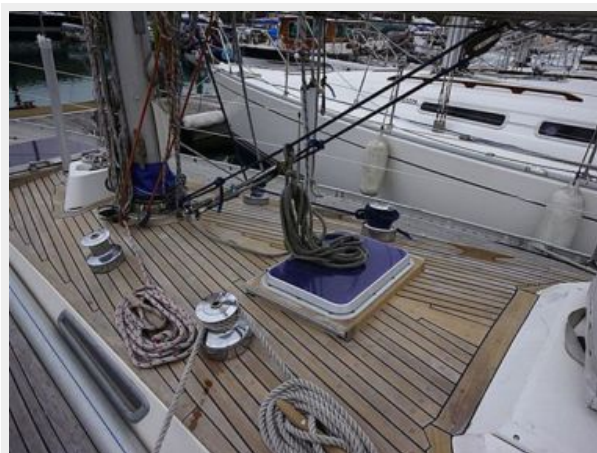
Компания предоставляет описание судна или яхты добросовестно, но не может гарантировать точность этой информации, а также не ручается за техническое состояние. Покупатель должен проинструктировать своих агентов или оценщиков исследовать представленную информацию более подробно, по собственному желанию. Продажа судна или яхты, изменение цены или снятие с продажи будет происходить без предварительного уведомления.

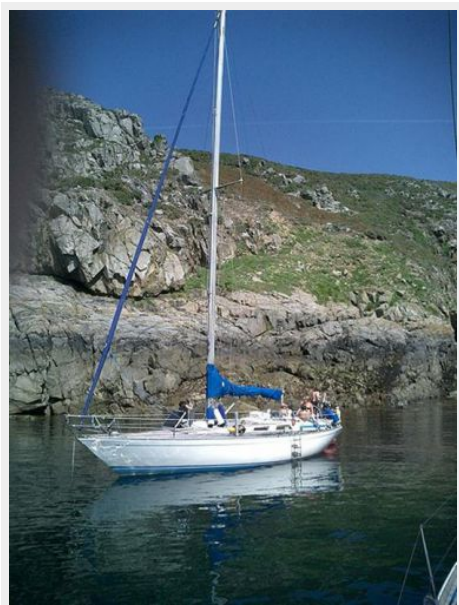
ФОТОГРАФИИ

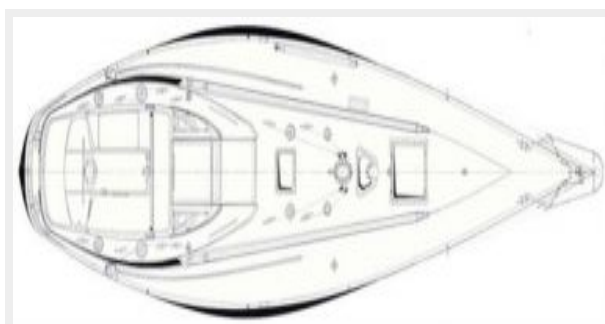
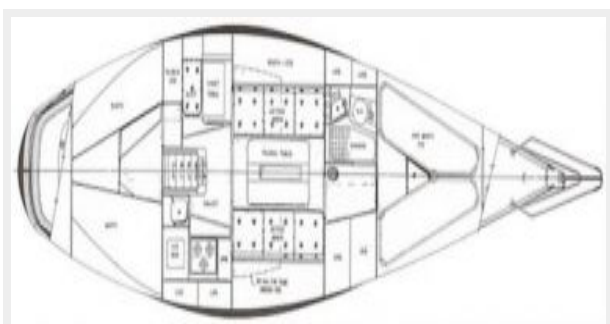
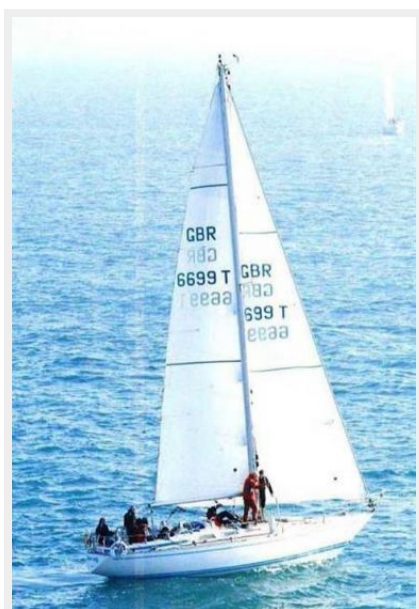


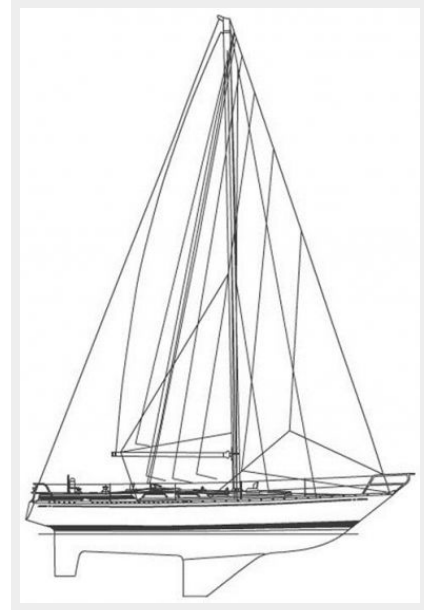
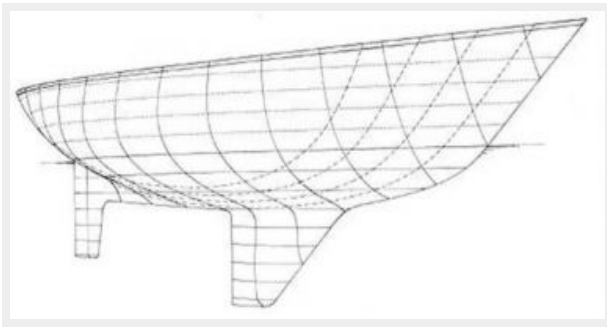
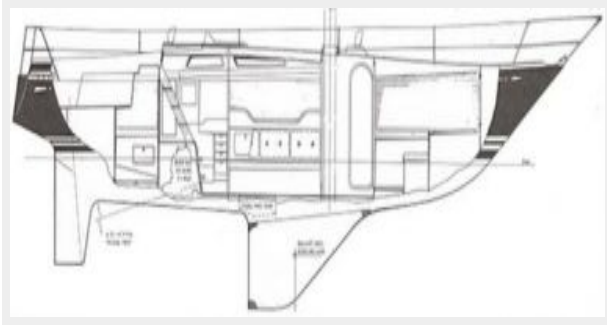












КОНТАКТЫ

Андрей Шестаков (Andrey Shestakov) – ведущий яхтенный брокер отдела продаж яхт и судов компании Shestakov Yacht Sales Inc. Официальный представитель Shestakov Yacht Sales Inc. для русскоговорящих клиентов в центральном офисе компании в Майами/Форт Лодердейл/Флорида/США.

Контактная информация

Email: andrey@shestakovyachtsales.com

Web: shestakovyachtsales.com

Телефоны

Краснодарский край: **+7(918)465-66-44**

США, Майами, Флорида: **+1(954)274-4435**

Время работы

Понедельник – Суббота: **9:00 - 21:00**
EDT

Воскресенье: **Закрето**

Адрес



Harbour Towne Marina, 850 NE 3rd St,
STE 213, Dania, FL 33004