

## C VISTA — OCEAN YACHTS



**Builder:** [Ocean Yachts](#)

**Year Built:** 1999

**Model:** Sport Fisherman

**Price:** PRICE ON APPLICATION

**Location:** United States

**LOA:** 60' 0" (18.29m)

**Beam:** 17' 0" (5.18m)

**Max Draft:** 4' 8" (1.42m)

**Cruise Speed:** 30 Kts. (35 MPH)

**Max Speed:** 35 Kts. (40 MPH)

Our experienced yacht broker, Andrey Shestakov, will help you choose and buy a yacht that best suits your needs **C VISTA — Ocean Yachts** from our catalogue. Presently, at Shestakov Yacht Sales Inc., we have a wide variety of yachts available on our sale's list. We also work in close contact with all the big yacht manufacturers from all over the world.

If you would like to buy a yacht **C VISTA — Ocean Yachts** or would like help answering any questions concerning purchasing, selling or chartering a yacht, please call **+1(954)274-4435**

# TABLE OF CONTENTS

---

TABLE OF CONTENTS	2
SPECIFICATIONS	4
Overview	4
Basic Information	4
Dimensions	4
Speed, Capacities and Weight	4
Accommodations	4
Hull and Deck Information	5
Engine Information	5
DETAILED INFORMATION	6
Accommodations	6
Salon	6
Galley	6
Flybridge	7
Deck Equipment	7
Cockpit	7
Engine and Mechanical	8
List of major upgrades for C Vista in April 2013	8
Broker Comments	8
C Vista Speed Chart	9
Exclusions	9
Disclaimer	9
PHOTOS	10
Profile Forward	10
Salon	10
Salon	10
Salon	10
Salon	10

Galley	10
Galley	11
Dinette	11
Master Stateroom	11
Master Stateroom	11
Master Bathroom	11
Master Vanity	11
VIP Stateroom	12
VIP Stateroom	12
VIP Bathroom	12
Guest Stateroom	12
Washer & Dryer	13
Guest Stateroom	13
Guest Bathroom	13
Bridge Chairs	13
Bridge Controls	13
Bridge Seating	13
Cockpit	14
Cockpit	14
Engine Room	14
Engine Room	14
Engine Room	14
CONTACTS	15
Contact details	15
Telephones	15
Office hours	15
Address	15

---

# SPECIFICATIONS

---

## Overview

---

C Vista has received extensive upgrades in 2013 with new generator, new watermaker, new televisions with new satellite receiver, new carpeting, new appliances, new navigation electronics, new flybridge enclosure, new outriggers and much more. Powered with the desirable CAT 3412 engines this boat is priced to sell.

## Basic Information

---

**Category:** Sport Fisherman

**Sub Category:** Convertible

**Model Year:** 1999

**Year Built:** 1999

**Country:** United States

## Dimensions

---

**LOA:** 60' 0" (18.29m)

**Beam:** 17' 0" (5.18m)

**Max Draft:** 4' 8" (1.42m)

## Speed, Capacities and Weight

---

**Cruise Speed:** 30 Kts. (35 MPH)

**Max Speed:** 35 Kts. (40 MPH)

**Displacement:** 75000 Pounds

**Water Capacity:** 240 Gallons

**Fuel Capacity:** 1120 Gallons

## Accommodations

---

**Total Cabins:** 3

**Sleeps:** 8

**Total Heads:** 3

---

## Hull and Deck Information

---

**Hull Material:** Fiberglass

**Hull Configuration:** Modified V-Hull

---

## Engine Information

---

**Engines:** 2

**Manufacturer:** Caterpillar

**Model:** 3412

**Engine Type:** Inboard

**Fuel Type:** Diesel

---

# DETAILED INFORMATION

---

## Accommodations

---

This 60' Ocean Yacht is the Plan A model with the three- stateroom floor plan. It has a full beam Master Stateroom located mid ship with a near King size bed, end tables, a separate stereo system, new 39' LG television custom fitted to the boat, full Dresser to port from top to bottom and full length to the stateroom, reading lamps, linen closet, separate make-up area. In addition, the Master has a very large private head with Corian counter top, a large stall shower, VacuFlush head, and medicine cabinet. Forward of the Master to starboard is a Guest/ day head with stall shower, VacuFlush head, and Corian counter top. The passageway also has a separate stacking washing machine and dryer. The extra large VIP guest stateroom is forward with a full Queen walk around bed athwartship. There are two cedar lined hanging lockers, a full array of drawers and cabinets as well as a TV and stereo. The ensuite head has a VacuFlush head and stall shower. During the April 2013 update all carpeting was replaced, new wall paper was done throughout the boat and new soft goods such as bedspreads, pillow shams, and valances

## Salon

---

**60' Ocean Yachts C VISTA** Entry to the salon is from a sliding door in the cockpit. There is a large "U" shaped sleeper couch to port with storage below that curves around a new cocktail table. To starboard are storage areas and a new 39' LG flat screen TV that was custom installed to fit. The Trac Vision satellite TV receiver is also new along with a new DVD player. The windows are all large for a great view out of the salon with curtains and shades. The aft window to the cockpit is etched with a sailfish clearing the water chasing flying fish across the back window door and side window. The tones are all neutral including the new carpeting installed in April 2013.

## Galley

---

The galley has a large new Kenmore side by side refrigerator, a new wine cooler and new ice maker.

- Forward of the salon
- Corian Countertops
- Abundant cabinet and drawer storage
- Overcounter lighting
- Sharp carousel Microwave
- Wine cooler
- Kenmore 26 CF refrigerator new 2013
- Scotsman Ice machine new 2013
- Kenmore dishwasher

- Full sized GE oven
- Gaggenau stovetop

---

## Flybridge

---

The air conditioned flybridge is very large with seating for up to 10 adults with a wrap around couch forward of the helm. The helm seat and admiral's seat are varnished ladder backs in good condition. The non skid floor has recently been redone along with the full enclosure replaced in April 2013. Helm & companion chair Lounge seating fwd of helm with storage beneath Air conditioning Indirect lighting overhead New enclosure Makrolon and Stratoglas New Garmin Radar 4' open array antenna Furuno GP 1850WF Garmin 7212 GPS plotter Simrad AP 26 autopilot ITT Jabsco Searchlight Caterpillar Electronics Display Danforth compass New Furuno Color sounder FCV 295 Icom VHF ICM45 JVC AM/FM DVD Player Lewmar windlass Trim tab controls Side power bow thruster ZF Mathers Controls Fireboy engine shutdown system

---

## Deck Equipment

---

- Quicklift Davit on bow
- Stainless steel bow & pulpit
- Lewmar Windlass
- Fenders

---

## Cockpit

---

- Teak cockpit
- Teak Coaming boards
- Teak steps to salon
- Portside storage locker
- Starboard side storage locker
- New Fighting chair April 2013
- Transom baitwell
- Wash downs port & starboard
- Tackle center
- Fresh water sink
- Prep center
- Dual 50amp shore power cord on Glendenning Cable Master
- Cockpit freezer with new condenser
- (8) Rod holders
- Transom door w/lifting gate
- Cockpit remote station w/ side power bow thruster
- Transom baitwell

- Fishbox chiller
- Spreader lights

---

## Engine and Mechanical

---

- Twin 3412 CATS with 2298 hours as of January 7, 2015
- Cruises Speed 30 Max Speed 36
- New 12.5kw Phasor generator / port 294 hours as of January 7, 2015
- Westerbeke generator / starboard 915 hours
- Racor fuel filters
- Sentry battery charger
- Oil X-changer system
- Racor Fuel filter system
- Full CAT mechanical gauges
- New Cruise RO watermaker

---

## List of major upgrades for C Vista in April 2013

---

- New Kohler 12kw generator
- New Cruise RO Watermaker Seemaker 30
- New Garmin 7212 GPS plotter with radar
- New Furuno FCV- 295 10.4 inch video fish finder
- Modify salon TV cabinet for new 39" LG TV
- Modify master stateroom TV cabinet to install new 39' LG TV
- New Trac Visio satellite TC system
- New receiver and DVD in salon
- New Kenmore side by side refrigerator in galley
- New wine cooler
- New Ice maker in galley
- New Miele stacking washer and dryer Model Axxis24
- New carpeting throughout
- New window treatments
- New wall paper throughout
- New salon table
- New soft goods, bed spreads
- New fighting chair in cockpit
- New Rupp outriggers
- New condensers for cockpit freezer
- New condenser for fish box freezer
- New flybridge enclosure

---

## Broker Comments

---



C Vista has received extensive upgrades in 2013 with new generator, new watermaker, new televisions with new satellite receiver, new carpeting, new appliances, new navigation electronics, new flybridge enclosure, new outriggers and much more. Powered with the desirable CAT 3412 engines this boat is priced to sell.

## C Vista Speed Chart

RPM	SPEED	FUEL USE	Knots	est.	gph	1500	23.2	52.0	1650	26.0	66.0
800	29.7	80.0	1900	32.3	88.0	2000	33.7	94.0	2100	35.3	102.0

CAT 1350 BHP (3412) Diesels 32" x 42" four-bladed prop, 1.7:1 reduction Test Conditions: At factory – new boat, full fuel & water. Speeds and performance may vary with conditions. Length . . . . .60'0" . . . . .18.29 m Beam . . . . .17'0" . . . . .5.18 m Draft . . . . .4'8" . . . . .1.42 m Freeboard, Bow . . . . .6'6" . . . . .1.98 m Freeboard, Stern . . . . .3'5" . . . . .1.04 m Headroom, most areas . . . . .6'6" . . . . .1.98 m Fuel Capacity . . . . .1,120 gal. . . . .4,238 l Water Capacity . . . . .240 gal. . . . .908 l Displacement . . . . .75,000 lb . . . . .34,030 kg Ht.–W/L to top of hard top . . . . .17'0" . . . . .5.18 m Sleeping Capacity . . . . .8

## Exclusions

Owner's personal belongings.

## Disclaimer

The Company offers the details of this vessel or yacht in good faith but cannot guarantee or warrant the accuracy of this information nor warrant the condition of the vessel. A buyer should instruct his representatives, agents, or his surveyors, to investigate such details as the buyer desires validated. This vessel or yacht is offered subject to prior sale, price change, or withdrawal without notice.

# PHOTOS

**Profile Forward**



**Salon**



**Salon**



**Salon**



**Salon**



**Galley**



**Galley**



**Dinette**



**Master Stateroom**



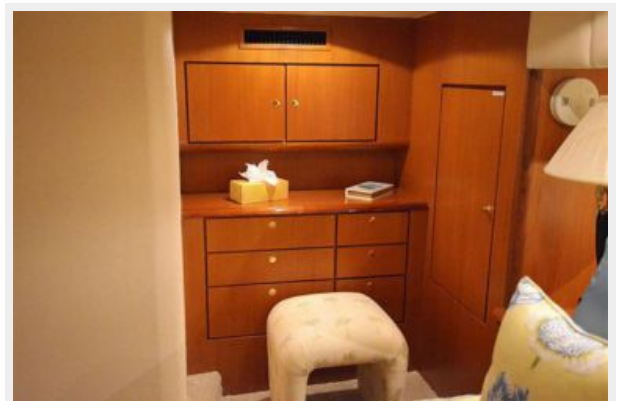
**Master Stateroom**



**Master Bathroom**



**Master Vanity**



**VIP Stateroom**



**VIP Stateroom**



**VIP Bathroom**



**Guest Stateroom**



**Guest Stateroom**



**Washer & Dryer**



**Guest Bathroom**



**Bridge Chairs**



**Bridge Controls**



**Bridge Seating**



**Cockpit**



**Cockpit**



**Engine Room**



**Engine Room**



**Engine Room**



# CONTACTS

---

Andrey Shestakov, leading yacht broker of the sales department of Shestakov Yacht Sales Inc. Shestakov Yacht Sales Inc., the official representative of the Miami/Fort Lauderdale FL headquarters.

## Contact details

---

Email: [andrey@shestakovyachtsales.com](mailto:andrey@shestakovyachtsales.com)

Web: [shestakovyachtsales.com/en/](http://shestakovyachtsales.com/en/)

## Telephones

---

USA: +1(954)274-4435

## Office hours

---

Monday – Saturday: **9:00 - 21:00** EDT

Sunday: **closed**

## Address

---



Harbour Towne Marina, 850 NE 3rd St,  
STE 213, Dania, FL 33004