

GOOD NEWS — MAIORA



Builder: MAIORA

Year Built: 2003

Model: Motor Yacht

Price: PRICE ON APPLICATION

Location: Italy

LOA: 79' 0" (24.08m)

Beam: 19' 1" (5.82m)

Max Draft: 9' 5" (2.87m)

Cruise Speed: 21 Kts. (24 MPH)

Max Speed: 24 Kts. (28 MPH)

Our experienced yacht broker, Andrey Shestakov, will help you choose and buy a yacht that best suits your needs **GOOD NEWS — MAIORA** from our catalogue. Presently, at Shestakov Yacht Sales Inc., we have a wide variety of yachts available on our sale's list. We also work in close contact with all the big yacht manufacturers from all over the world.

If you would like to buy a yacht **GOOD NEWS — MAIORA** or would like help answering any questions concerning purchasing, selling or chartering a yacht, please call **+1(954)274-4435**

TABLE OF CONTENTS

TABLE OF CONTENTS	2
SPECIFICATIONS	3
Overview	3
Basic Information	3
Dimensions	3
Speed, Capacities and Weight	3
Accommodations	4
Hull and Deck Information	4
Engine Information	4
DETAILED INFORMATION	5
Features	5
Exclusions	8
Disclaimer	8
PHOTOS	9
CONTACTS	12
Contact details	12
Telephones	12
Office hours	12
Address	12

SPECIFICATIONS

Overview

2003 MAIORA 24 @ LIVORNO, ITALY Generators hours: Port: 1962 Stbd: 1975

Basic Information

Category: Motor Yacht

Sub Category: Flybridge

Model Year: 2003

Year Built: 2003

Country: Italy

Vessel Top: 2363

Fly Bridge: Yes

Cockpit: Yes

Dimensions

LOA: 79' 0" (24.08m)

Beam: 19' 1" (5.82m)

Max Draft: 9' 5" (2.87m)

MFG Length: 79' 1" (24.10m)

Speed, Capacities and Weight

Cruise Speed: 21 Kts. (24 MPH)

Cruise Speed Range: 600

Max Speed: 24 Kts. (28 MPH)

Displacement: 70 Pounds

Water Capacity: 726 Gallons

Holding Tank: 119 Gallons

Fuel Capacity: 2541 Gallons

Accommodations

Total Cabins: 3

Total Berths: 4

Sleeps: 6

Total Heads: 3

Crew Berths: 2

Crew Sleeps: 2

Crew Heads: 1

Hull and Deck Information

Hull Material: GRP

Deck Material: Teak over Fiberglass

Hull Configuration: Planing

Hull Color: WHITE

Interior Designer: OBERTO DEL RE

Engine Information

Engines: 2

Manufacturer: MTU

Model: 12V 2000 M91 (2x1500 hp MTU)

Engine Type: Inboard

Fuel Type: Diesel

DETAILED INFORMATION

Features

MECHANICAL EQUIPMENT Main Engines: 2 x MTU12V2000M91 (1500 HP); stbd hours 1039, port hours 1039 2 x ZF BW2050 Ratio 2.4687:1 2 x RADICE 5 blades; Gear Box: D=1000mm, P=1170mm 2 x MARINOX 17, L=4890; Propeller: D=90mm Thrusters: BCS Bow and Stern Air Conditioning: CONDARIA 5.5 kW-220 V (90000 BTU)Marinco (300 Liters/Hour) Fresh Water Pumps Fire:2 x G&R Ecoinox 2 24v DC G&R ACB Pumps Bilge Pumps:131 24v DC 6 x Rulematic 1500 24v Bilge Pump:DC 1 x G&R ACB 131 24v DC TITAN (Centralized) Bilge:2 x G&R Echo Jet 1 BB 24v DC 1 x Pump (Manual) WC:G&R CP 40/N 24v AC (reversible) 1 x Pump Fuel Pump (DC): G&R CP 32 NT 220v AC 2 x G&R Fuel Pump (AC) Fuel:Excelsior 1 x G&R Echo MV 44 24v Pump (Manual) Black: DC ELECTRICAL SYSTEM

Electrical System AC 220V 50Hz; DC 24V

Generators 2 x ONAN 22.5 kW 220V 50Hz stbd hours 1975 port hours 1962

1 x WHISPER 6kW 220V 50 Hz

Inverter MASTERVOLT 24V/3000W

Batteries All Gel batteries (Start; Service; MTU RC; Generators)

Charger Mastervolt 24v/25A

2x Mastervolt 24v/100A (service)

Boiler 2 x 80L 220V AC

WHEELHOUSE ELECTRONICS

Wind speed / Direction Raymarine

Speed Ground True Raymarine

Depth Raymarine

Chart plotter / fish finder L1250 + CMAP Raymarine

Radar 72nm RL 80C Raymarine

Monitor TVCC 2x

Bow and Stern Thrust Controls

Comm Sailor VHF DSC RT4822 Sailor

AP ST7001+ Raymarine

F77 Skanti

Navtex ICS NAV6 ICS

Intecom 3x

PC Dell + Maxsea Dell

FLY BRIDGE ELECTRONICS

Wind speed/direction Raymarine

Multi Raymarine

Chart Plotter / fish finder L1250 Raymarine

Radar 72nm RL 80C Raymarine

Monitor TVCC

GPS 300 for mooring Alarm Raymarine

CCTV AND ALARM

1 x Camera in Engine room (panning) 1 x IR Camera in Engine room (fixed) 1 x Camera Stern

1 x IR Camera Stern 1 x Camera on Fly (looking forward) All images are transmitted to Wheelhouse, Fly and TVs on board. Alarm system:

- Interiors (3)
- Engine Room and Technical Area (3)
- Crew Area (1)

Keypad for exterior / interior locking

GALLEY

Dishwasher Miele WT945

Fridge Miele MF608I

Cooking Surface Miele KM463

Oven Miele H187MB

Dishwasher Miele G858-60-SCVI plus

Ice Maker W1VA IMI00

Trash Compactor Yes

DECK EQUIPMENT

Foredeck .- Tender Project Zodiac 320 plus crane for same 1x Anchor Hatch to 2 berth crew cabin Aft. Deck.- 2x Ropes, winches, passerelle control, swimming ladder control, table and chairs, etc.

Exclusions

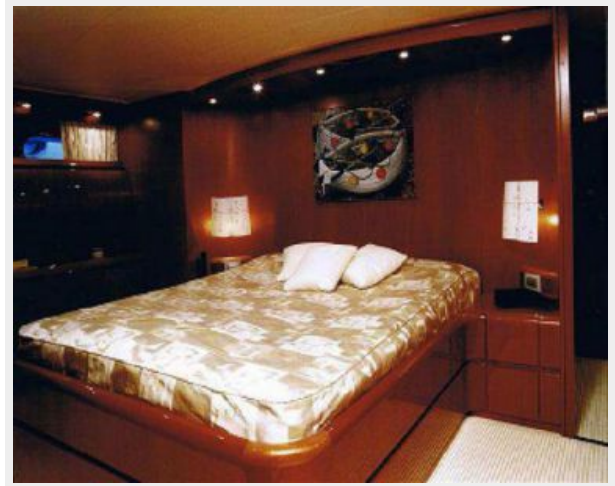
Owner's personal belongings.

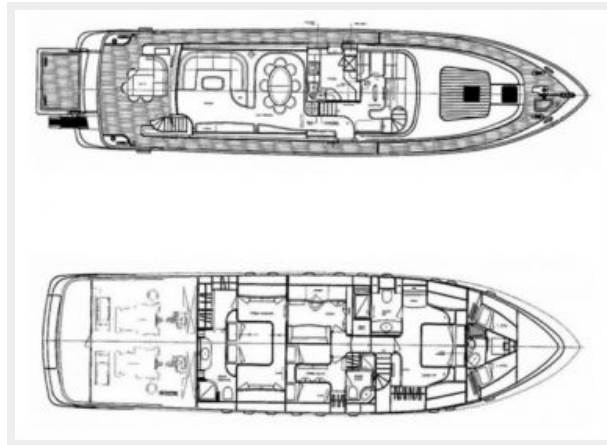
Disclaimer

The Company offers the details of this vessel or yacht in good faith but cannot guarantee or warrant the accuracy of this information nor warrant the condition of the vessel. A buyer should instruct his representatives, agents, or his surveyors, to investigate such details as the buyer desires validated. This vessel or yacht is offered subject to prior sale, price change, or withdrawal without notice.

PHOTOS







CONTACTS

Andrey Shestakov, leading yacht broker of the sales department of Shestakov Yacht Sales Inc. Shestakov Yacht Sales Inc., the official representative of the Miami/Fort Lauderdale FL headquarters.

Contact details

Email: andrey@shestakovyachtsales.com

Web: shestakovyachtsales.com/en/

Telephones

USA: +1(954)274-4435

Office hours

Monday – Saturday: **9:00 - 21:00** EDT

Sunday: **closed**

Address



Harbour Towne Marina, 850 NE 3rd St,
STE 213, Dania, FL 33004