

## JENNY — NORDHAVN



**Судостроитель:** NORDHAVN

**Год постройки:** 1994

**Модель:** Траулер

**Цена:** **ЦЕНА ЯХТЫ ПО ЗАПРОСУ**

**Местонахождение:** United States

**Длина общая:** 46' 0" (14.02m)

**Ширина:** 15' 5" (4.70m)

**Макс. осадка:** 5' 5" (1.65m)

**Крейс. скорость:** 8 Kts. (9 MPH)

**Макс. скорость:** 9 Kts. (10 MPH)

Купить Jenny — NORDHAVN а также выбрать подходящую вам яхту из нашего каталога яхт вам поможет опытный яхтенный брокер Андрей Шестаков. На сегодняшний день компания Shestakov Yacht Sales Inc. имеет большое количество яхт в собственном списке продаж, а также тесно сотрудничает со всеми крупными яхтенными производителями по всему миру.

Для того чтобы купить яхту Jenny — NORDHAVN а также проконсультироваться по любому вопросу связанному с покупкой, продажей, чартером яхт позвоните по телефону **+7(918)465-66-44**.

# ОГЛАВЛЕНИЕ

ОГЛАВЛЕНИЕ	2
ХАРАКТЕРИСТИКИ	5
Обзор	5
Основная информация	5
Размеры	5
Скорость, вместимость и масса	5
Размещение	6
Корпус и палуба	6
Информация о двигателе	6
ПОДРОБНОЕ ОПИСАНИЕ	7
Nordhavn 46' Overview	7
Nordhavn 46' Galley Equipment	7
Nordhavn 46' Electronic & Navigational Equipment	7
Nordhavn 46' Mechanical & Electrical Equipment	8
Nordhavn 46' Deck & Safety Equipment	9
Nordhavn 46' Disclaimer	10
Исключения	10
Отказ от ответственности	10
ФОТОГРАФИИ	12
Nordhavn 40' Stern	12
Nordhavn 40' Liferaft	12
Nordhavn 40' Dingy aft	12
Nordhavn 40' Boat Deck looking aft	12
Nordhavn 40' Mast	12
Nordhavn 40' Storm shields/Birds	12
Nordhavn 40' Boat Deck looking fwd	13
Nordhavn 40' Bow Deck looking fwd	13
Nordhavn 40' Clean Caprail	13

Nordhavn 40' Windlass	13
Nordhavn 40' Shiny gelcoat	13
Nordhavn 40' Bow Deck looking aft	13
Nordhavn 40' starboard side deck walkaround	14
Nordhavn 40' Fish cleaning station	14
Nordhavn 40' Aft deck	14
Nordhavn 40' pilothouse	14
Nordhavn 40' bottom epoxy barrier coat	14
Nordhavn 40' Shiny hull paint	14
Nordhavn 40' Salon port side	15
Nordhavn 40' Freezer	15
Nordhavn 40' Galley	15
Nordhavn 40' Stove	15
Nordhavn 40' Upright Refrigerator	15
Nordhavn 40' Galley looking aft	15
Nordhavn 40' Pilothouse	16
Nordhavn 40' Settee/ pilot berth	16
Nordhavn 40' Pilothouse	16
Nordhavn 40' radios overhead	16
Nordhavn 40' Chart locker	16
Nordhavn 40' TV	16
Nordhavn 40' Salon looking fwd	17
Nordhavn 40' Master bed	17
Nordhavn 40' Master looking aft	17
Nordhavn 40' LED overhead lighting	17
Nordhavn 40' Master head	17
Nordhavn 40' Master Shower	17
Nordhavn 40' Master head	18
Nordhavn 40' Master head	18

---

Nordhavn 40' Master head	18
Nordhavn 40' chain locker	18
Nordhavn 40' guest stateroom	18
Nordhavn 40' guest stateroom	18
Nordhavn 40' guest stateroom	19
Nordhavn 40' Staircase	19
Nordhavn 40' Washer/Dryer	19
Nordhavn 40' Engine room	19
Nordhavn 40' Engine room	19
Nordhavn 40' Engine room	19
Nordhavn 40' Engine room	20
Nordhavn 40' Battery boxes	20
Nordhavn 40' Webasto Heater	20
Nordhavn 40' Generator	20
<b>КОНТАКТЫ</b>	<b>21</b>
Контактная информация	21
Телефоны	21
Время работы	21
Адрес	21

# ХАРАКТЕРИСТИКИ

## Обзор

We proudly present Nordhavn 46' hull # 39 'Jenny', the central character of the book , 'Jenny's Journey:' *The Reality Of Living The Dream,* which chronicled a very experienced owner's 5 year log of great passagemaking. The current owner has taken an already impressive vessel and found ways to enhance her even further. This 1994 N46 is nicely equipped with a dry stacked Lugger diesel and a rare dry stacked generator, paravane stabilization, webasto heat, watermaker, updated electronics, and a roomy 11.5' RIB dingy with a 20hp Four Stroke.

This is a rare opportunity to own a Nordhavn that has an enviable reputation and has been properly maintained . Price reduced!

*Seriously for sale...Owner moving up to a larger Nordhavn*

## Основная информация

Тип судна: Траулер

Подкатегория: Водоизмещение

Модельный год: 1994

Год постройки: 1994

Страна: United States

## Размеры

Длина общая: 46' 0" (14.02m)

Ширина: 15' 5" (4.70m)

Макс. осадка: 5' 5" (1.65m)

## Скорость, вместимость и масса

Крейс. скорость: 8 Kts. (9 MPH)

Макс. скорость: 9 Kts. (10 MPH)

Водоизмещение: 60000 Pounds

Вместимость воды: 280 Gallons

Вместимость сточного бака: 50 Gallons

Объем топливного бака: 1000 Gallons

## Размещение

---

**Всего кают:** 2

**Всего коек:** 2

**Спальные места:** 4

**Всего ком. состава:** 2

## Корпус и палуба

---

**Материал корпуса:** Fiberglass

**Материал палубы:** Fiberglass Sandwich

**Комплектация корпуса:** Full  
Displacement

## Информация о двигателе

---

**Двигатели:** 1

**Производитель:** Luggier

**Модель:** 668D

**Тип двигателя:** Inboard

**Тип топлива:** Diesel

---

# ПОДРОБНОЕ ОПИСАНИЕ

---

## Nordhavn 46' Overview

---

*Jenny*, has been a well-known vessel for many years, having been the central character of the book ***Jenny's Journey: The Reality Of Living The Dream.*** (available for order on Amazon.com.) You won't find a nicer Nordhavn 46 of this vintage that has been constantly upgraded with a very strict preventative maintenance schedule. Newer isn't necessarily better as this vessel is in ready-to-go status and has had a very smart re-designing of functional elements thanks to her very knowledgeable past owners.

The current Annapolis, Maryland-based owners were constantly focused on refining the comfort, increasing the range and efficiency, and ensuring that the equipment was always more than ample to do serious passagemaking. This vessel is only being offered to someone who will care for her the way her previous owners have since they are looking to get a larger Nordhavn. Price reduced!

## Nordhavn 46' Galley Equipment

---

- Full size Norcold DE-560 9 cubic ft AC/DC refrigerator/ freezer
- 3 Burner gimbaled propane Stove w/ oven
- (2) 20lb (5gal) propane tanks in external cabinet w/ automatic change over manifold and new gauges to meet ABYC standards.
- 1200 watt AC Princess microwave oven
- Double SS sink
- Single lever Delta faucet (2013)
- Seagull filtered drinking water system for galley (2013)
- Top loading freezer

## Nordhavn 46' Electronic & Navigational Equipment

---

- Furuno 64 mile 6KW Model 1942 M2 radar (2012)
- Furuno 24 mile 2KW Model 1721 radar
- Fixed mount radar reflector
- Furuno sounder FCV-581 w/ integral log, nav data display, and sea temp.
- Robertson AP20 autopilot fully interfaced
- Autohelm ST50 tridata: wind, speed, depth- remote in master
- GPS/ DGPS - Furuno GP 32 & Garmin GPS plus III (2012)
- Furuno GR80 beacon receiver
- AIS- smart radio SR162 receiver

- (2) Navigational computers each with its own GPS (Garmin to one, Furuno to the other)
- Coastal Navigation Software
- ICOM SSB M-710
- Pactor System to send and receive email from SSB (2012)
- ICOM VHF IC-M127
- ICOM VHF IC-M422
- Ear Phone jacks in master & pilot berth for SSB & VHF
- Load Hailer
- Ritchie compass (pilothouse) Plastimo compass (master stateroom)
- Large remote spotlight
- Dual trumpet Horn
- 40" Sony Bravia LCD flatscreen TV with (7) surround sound theater speakers w/ woofer in salon
- 22" Skyworth LCD 12v/220v TV in master stateroom
- Panasonic Blu-Ray / DVD home theater system
- Digital TV antenna
- Sony AM/FM CD Stereo w/ shortwave radio feature
- Sony AM/FM CD stereo w/ remote (pilothouse)
- Sony AM/FM CD stereo (fwd stateroom)

---

## Nordhavn 46' Mechanical & Electrical Equipment

---

The set up on '*Jenny*' allows for independence and self-sufficiency. Batteries and a 3000 watt inverter are large enough to allow anchoring for long periods of time. While at the dock, she simply only requires (1) 30amp power hookup .

- Single Luger L-668 naturally aspirated dry stack diesel- 5,460 Hours
- Northern Lights model M673 6KW keel cooled dry stack generator-2,460 Hours
- Wesmar 5hp Bowthruster
- Aqua Drive System- 2" standard taper SS shaft w/ packless shaft seals - (reduces vibration)
- 180 AMP Alternator (2013)
- Twindisk transmission 3:1 reduction
- Shark Shaft line cutter for prop (2012)
- 1000 gal diesel fuel in 4 separate tanks w/ sight tubes
- Dual racor 75/900FG primary fuel filters
- 60 gph fuel transfer pump for priming fuel lines, filling primary racors, transferring fuel, or backing up the engine driven fuel pump. Total of (4) transfer pumps.
- Racor alarm for fuel filters
- Electric Lube oil changing system for main, transmission, and generator
- Propane Tanks (4)
- Webasto DBW 2010 44,000 BTU diesel furnace with circulating hot water loop through hot water tank and cabin heat exchangers located throughout the boat



- Coolmate MarineAir- 16,000 BTU (2010)
- Hella cabin fans (5)
- 150 gallons per day DC watermaker
- Hot water heater (2011)- engine or 110V
- Hot water provided through (1) 9 gallon tank heated by the furnace and (1) 11 gallon tank heated by the engine or AC electric
- Kariba WCP 1085 AC 10lb combo washer and 220v dryer
- (8) 8D House batteries / (1) 8D starting battery -(2010)
- (2) Electric Toilets - Tecma (master), Groco (fwd)
- (2) Holding tanks . Both heads have diverter valves to overboard or individual internal holding tanks, both holding tanks have DC mascerator pumps controlled on the bridge for overboard pump-out and deck fittings for marina pump outs
- (2) 30 AMP shore power cords
- Link 20 battery watch system
- RS-3000 Xantrex 3,000 watt inverter/charger (2007)
- Fireboy fire suppression system w/ pilothouse remote activation
- (2) Electric bilge pumps, (1) engine driven bilge pump, (1) manual bilge pump. Rule high water alarm system.
- Hynautic hydraulic steering system
- Rudder angle indicator, tachometer, oil pressure, coolant temperature, racor vaccum gauge, racor water warning gauge, morse engine and gear controls
- New muffler gaskets and heat resistant wrap for dry stacks (2013)

## Nordhavn 46' Deck & Safety Equipment

---

The construction of these boats is renowned for their sturdiness and high quality. There are 8 full longitudinal stringers, and the hull and deck joints are through bolted. There are numerous supports and handholds to allow safe movement around the deck areas.

- Paravane stabilization system owner designed and engineered for easy and quick deployment and retrieval . TPS (towed passive stabilizer) system set for 7 knots . Upgraded magma flopper stoppers.
- All rigging inspected & standing rigging renewed (2013)
- 11.5' West Marine RIB 350 dingy w/ 20hp Mercury Four Stroke (2009)
- Custom extended boom w/ electric davit can launch dingy on port, starboard, or stern
- Elliot MK4 6-Man Solas rated cannister raft (2012)
- 406 EPIRB w/ new battery ( 2013)
- Fortress Anchor model FX-37
- Rocna Anchor 55kg
- Droge Sea Anchor
- 600ft 3/8" galvanized bow chain
- 600ft 3/4 nylon rode
- 200ft nylon rode & 30ft chain for stern anchor

- 300ft nylon rode in lazarette
- Maxwell 3500 12V DC electric windlass w/ foot pads & remote in wheelhouse.
- Sea water deck and anchor washdown on foredeck, fresh water washdown in cockpit
- Stainless steel boarding/swim ladder w/ mounts at each boarding gate.
- Hookah air-line diving system (2008)
- Fish cleaning station on top of aft deck cabinet
- Rod holders & downriggers
- (2) Jim Bouy mounted liferings
- (7) Fire extinguishers
- (3) Smoke/cO2 detectors
- Weber cockpit cooking grill (2013)
- Upgraded Hella navigation running lights
- Spreader lights to illuminate upper deck & foredeck
- Interior overhead courtesy lights changed to LED for safety
- Textaline window screens for side salon windows
- Textaline aft deck enclosure
- Sunbrella window covers for pilothouse
- Sunbrella foredeck sunshade w/ custom built-in water cistern collection system
- Storm covers for salon windows
- Very large aft Lazarette with huge storage capacity and access
- Bow storage box
- Alwgrip paint on hull sides
- Epoxy barrier coat applied to hull
- Heavy duty rubrail rebedded (2012)
- All exterior house caulking renewed (2012)
- Extensive inventory of spare parts, service records, and manuals for all onboard systems.

## Nordhavn 46' Disclaimer

---

The Company offers the details of this vessel in good faith but cannot guarantee or warrant the accuracy of this information nor warrant the condition of the vessel. A buyer should instruct his agents, or his surveyors, to investigate such details as the buyer desires validated. This vessel is offered subject to prior sale, price change, or withdrawal without notice.

## Исключения

---

При продаже яхты исключаются личные вещи владельца.

## Отказ от ответственности

---

Компания предоставляет описание судна или яхты добросовестно, но не может гарантировать точность этой информации, а также не ручается за техническое

состояние. Покупатель должен проинструктировать своих агентов или оценщиков исследовать представленную информацию более подробно, по собственному желанию. Продажа судна или яхты, изменение цены или снятие с продажи будет происходить без предварительного уведомления.

# ФОТОГРАФИИ

**Nordhavn 40' Stern**



**Nordhavn 40' Liferaft**



**Nordhavn 40' Dingy aft**



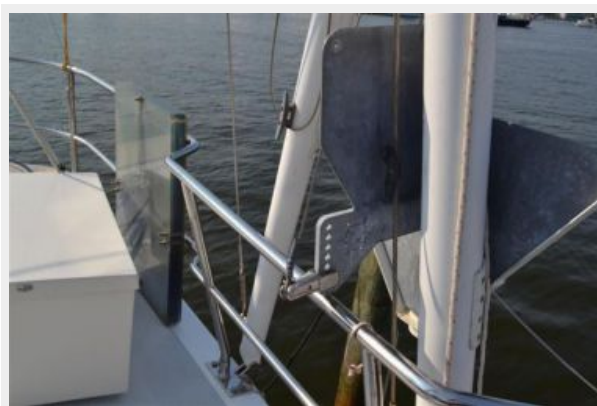
**Nordhavn 40' Boat Deck looking aft**



**Nordhavn 40' Mast**



**Nordhavn 40' Storm shields/Birds**



**Nordhavn 40' Boat Deck looking fwd**



**Nordhavn 40' Bow Deck looking fwd**



**Nordhavn 40' Clean Caprail**



**Nordhavn 40' Windlass**



**Nordhavn 40' Shiny gelcoat**



**Nordhavn 40' Bow Deck looking aft**





**Nordhavn 40' starboard side deck walkaround**



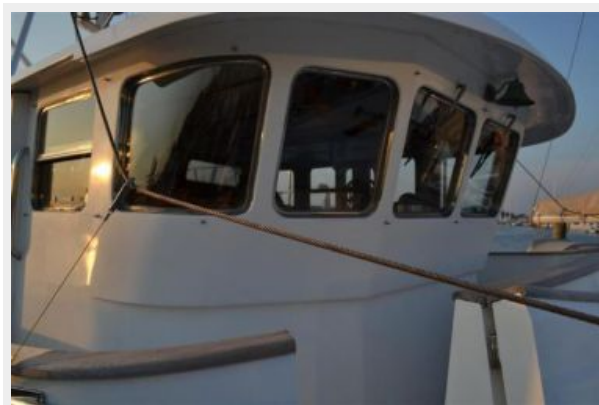
**Nordhavn 40' Fish cleaning station**



**Nordhavn 40' Aft deck**



**Nordhavn 40' pilothouse**



**Nordhavn 40' bottom epoxy barrier coat**



**Nordhavn 40' Shiny hull paint**



**Nordhavn 40' Salon port side**



**Nordhavn 40' Freezer**



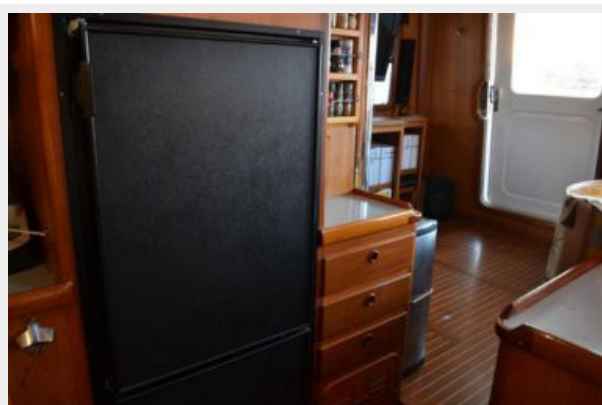
**Nordhavn 40' Galley**



**Nordhavn 40' Stove**



**Nordhavn 40' Upright Refrigerator**



**Nordhavn 40' Galley looking aft**





**Nordhavn 40' Pilothouse**



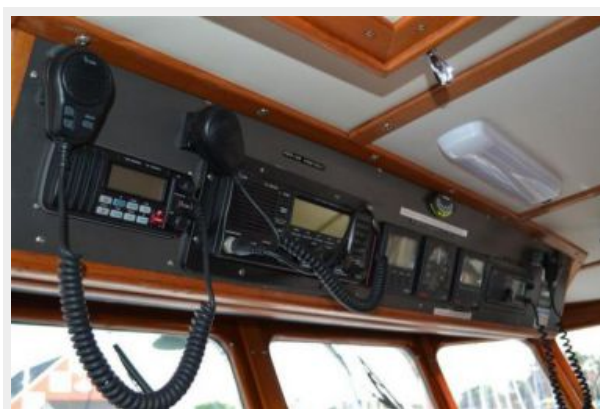
**Nordhavn 40' Settee/ pilot berth**



**Nordhavn 40' Pilothouse**



**Nordhavn 40' radios overhead**



**Nordhavn 40' Chart locker**



**Nordhavn 40' TV**





**Nordhavn 40' Salon looking fwd**



**Nordhavn 40' Master bed**



**Nordhavn 40' Master looking aft**



**Nordhavn 40' LED overhead lighting**



**Nordhavn 40' Master head**



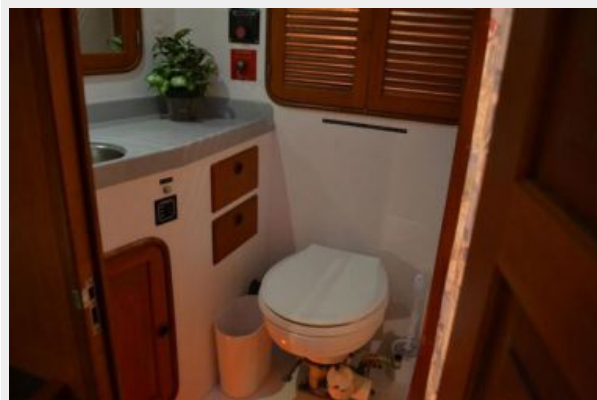
**Nordhavn 40' Master Shower**



**Nordhavn 40' Master head**



**Nordhavn 40' Master head**



**Nordhavn 40' Master head**



**Nordhavn 40' chain locker**



**Nordhavn 40' guest stateroom**



**Nordhavn 40' guest stateroom**

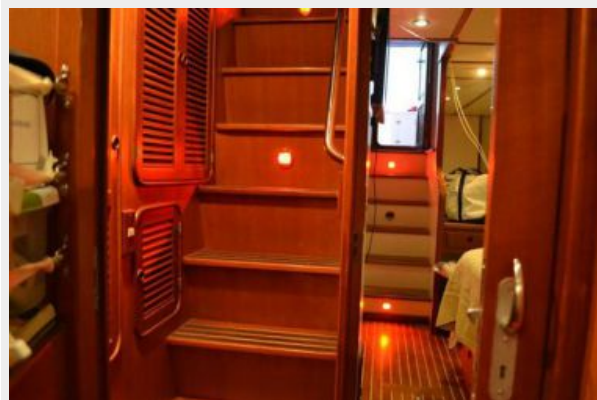




**Nordhavn 40' guest stateroom**



**Nordhavn 40' Staircase**



**Nordhavn 40' Washer/Dryer**



**Nordhavn 40' Engine room**



**Nordhavn 40' Engine room**



**Nordhavn 40' Engine room**



**Nordhavn 40' Engine room**



**Nordhavn 40' Battery boxes**



**Nordhavn 40' Webasto Heater**



**Nordhavn 40' Generator**



# КОНТАКТЫ

---

Андрей Шестаков (Andrey Shestakov) – ведущий яхтенный брокер отдела продаж яхт и судов компании Shestakov Yacht Sales Inc. Официальный представитель Shestakov Yacht Sales Inc. для русскоговорящих клиентов в центральном офисе компании в Майами/Форт Лодердейл/Флорида/США.

## Контактная информация

---

Email: [andrey@shestakovyachtsales.com](mailto:andrey@shestakovyachtsales.com)

Web: [shestakovyachtsales.com](http://shestakovyachtsales.com)

## Телефоны

---

Краснодарский край: **+7(918)465-66-44**

США, Майами, Флорида: **+1(954)274-4435**

## Время работы

---

Понедельник – Суббота: **9:00 - 21:00**  
EDT

Воскресенье: **Закрыто**

## Адрес

---



Harbour Towne Marina, 850 NE 3rd St,  
STE 213, Dania, FL 33004