

GLORY — FORMULA



Builder: FORMULA

Year Built: 1998

Model: Cruiser

Price: PRICE ON APPLICATION

Location: United States

LOA: 34' 0" (10.36m)

Beam: 12' 0" (3.66m)

Min Draft: 3' 0" (0.91m)

Cruise Speed: 22 Kts. (25 MPH)

Max Speed: 34 Kts. (39 MPH)

Our experienced yacht broker, Andrey Shestakov, will help you choose and buy a yacht that best suits your needs **Glory — FORMULA** from our catalogue. Presently, at Shestakov Yacht Sales Inc., we have a wide variety of yachts available on our sale's list. We also work in close contact with all the big yacht manufacturers from all over the world.

If you would like to buy a yacht **Glory — FORMULA** or would like help answering any questions concerning purchasing, selling or chartering a yacht, please call **+1(954)274-4435**

TABLE OF CONTENTS

TABLE OF CONTENTS	2
SPECIFICATIONS	3
Basic Information	3
Dimensions	3
Speed, Capacities and Weight	3
Accommodations	3
Hull and Deck Information	3
Engine Information	4
DETAILED INFORMATION	5
Key Features	5
Walkthrough	5
Equipment	5
Electronics	5
Exclusions	6
Disclaimer	6
PHOTOS	7
CONTACTS	9
Contact details	9
Telephones	9
Office hours	9
Address	9

SPECIFICATIONS

Basic Information

Category: Cruiser

Sub Category: Cabin Cruiser

Model Year: 1998

Year Built: 1998

Country: United States

Dimensions

LOA: 34' 0" (10.36m)

Beam: 12' 0" (3.66m)

Min Draft: 3' 0" (0.91m)

Clearance: 10' 0" (3.05m)

Speed, Capacities and Weight

Cruise Speed: 22 Kts. (25 MPH)

Max Speed: 34 Kts. (39 MPH)

Displacement: 13500 Pounds

Water Capacity: 60 Gallons

Holding Tank: 30 Gallons

Fuel Capacity: 222 Gallons

Accommodations

Total Cabins: 1

Total Berths: 2

Sleeps: 6

Total Heads: 1

Hull and Deck Information

Hull Material: Fiberglass

Engine Information

Engines: 2

Manufacturer: Mercruiser

Model: V Drive 310

Engine Type: Inboard

Fuel Type: Gas/Petrol

DETAILED INFORMATION

Key Features

Formula's Most Popular Model. High Quality, Roomy and Performance Cruiser.

Recent Service and Refit:

- Interlux Bottom Paint
- Compound and Wax
- Engine Service (Filters, Oil Change, Tune Up)
- New Bimini Top and miscellaneous minor repairs to Provide a True Key Delivery
- \$10,000 in Recent Upgrades
- Port Engine Rebuild by Mercruiser (100 hrs.)
- STBD Engine Rebuild by Flagship Marine (10 hrs)

Take the time to Personally Inspect this Vessel..You will not be dissapointed

Walkthrough

Enclosed Helm Area leads to Sliding Cabin Door, Cabin provides Island Berth, Large Dinette, Galley with Fridge, Microwave, And Stove Enclosed Vacuflush.

Head on Port Side with Shower. Aft Cabin is Controlled with 16,000 BTU Air Conditioning Unit.

Equipment

- Hot Water Tank
- Central Vac.
- 6.5 Generator
- Electric Windlass
- Remote Spotlight
- Color TV w/Remote

Electronics

- Raytheon 215 VHF
- Ritchie Compass
- Uniden Depth Finder
- New Horizon GPS
- New Color Chart Plotter w/Chip

- New Kenwood Stereo wCD

Exclusions

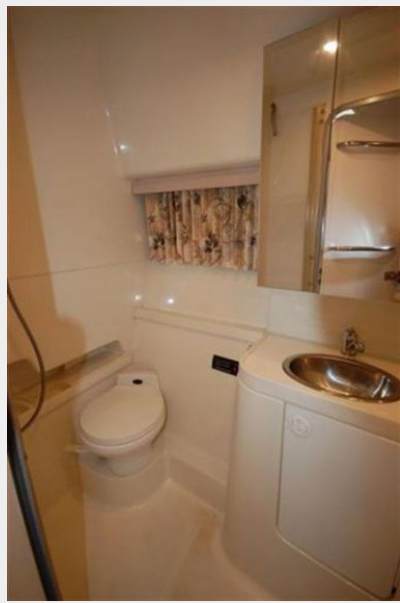
Owner's personal belongings.

Disclaimer

The Company offers the details of this vessel or yacht in good faith but cannot guarantee or warrant the accuracy of this information nor warrant the condition of the vessel. A buyer should instruct his representatives, agents, or his surveyors, to investigate such details as the buyer desires validated. This vessel or yacht is offered subject to prior sale, price change, or withdrawal without notice.

PHOTOS





CONTACTS

Andrey Shestakov, leading yacht broker of the sales department of Shestakov Yacht Sales Inc. Shestakov Yacht Sales Inc., the official representative of the Miami/Fort Lauderdale FL headquarters.

Contact details

Email: andrey@shestakovyachtsales.com

Web: shestakovyachtsales.com/en/

Telephones

USA: +1(954)274-4435

Office hours

Monday – Saturday: **9:00 - 21:00** EDT

Sunday: **closed**

Address



Harbour Towne Marina, 850 NE 3rd St,
STE 213, Dania, FL 33004