

2002 SEA RAY 55' SUNDANCER — SEA RAY



Судостроитель: SEA RAY

Год постройки: 2002

Модель: Моторная яхта

Цена: ЦЕНА ЯХТЫ ПО ЗАПРОСУ

Местонахождение: United States

Длина общая: 55' 0" (16.76m)

Ширина: 15' 11" (4.85m)

Купить 2002 Sea Ray 55' Sundancer — SEA RAY а также выбрать подходящую вам яхту из нашего каталога яхт вам поможет опытный яхтенный брокер Андрей Шестаков. На сегодняшний день компания Shestakov Yacht Sales Inc. имеет большое количество яхт в собственном списке продаж, а также тесно сотрудничает со всеми крупными яхтенными производителями по всему миру.

Для того чтобы купить яхту 2002 Sea Ray 55' Sundancer — SEA RAY а также проконсультироваться по любому вопросу связанному с покупкой, продажей, чартером яхт позвоните по телефону **+7(918)465-66-44**.

ОГЛАВЛЕНИЕ

ОГЛАВЛЕНИЕ	2
ХАРАКТЕРИСТИКИ	4
Основная информация	4
Размеры	4
Скорость, вместимость и масса	4
Размещение	4
Корпус и палуба	4
Информация о двигателе	4
ПОДРОБНОЕ ОПИСАНИЕ	5
Color	5
Options	5
Propulsion	5
Hull & Deck Features	5
Canvas (Sunbrella)	5
Windlass System	5
Cockpit Features	6
Cabin Features	6
Salon	6
Galley	6
Master Stateroom	7
Master Head	7
Forward Stateroom	7
Guest Head	7
Guest Shower	7
Control Station	8
Electronics	8
Electrical Systems	8
Generator	8

Air Conditioning/ Heating	8
Engine Room	9
Fuel System	9
Water System	9
Waste System	9
Underwater Gear	9
Исключения	10
Отказ от ответственности	10
ФОТОГРАФИИ	11
Bridge	11
Bridge	11
Cockpit	11
Salon	11
Salom	11
Master Stateroom	11
Master Head	12
Guest Stateroom	12
Guest Shower	12
Port Profile	12
КОНТАКТЫ	13
Контактная информация	13
Телефоны	13
Время работы	13
Адрес	13

ХАРАКТЕРИСТИКИ

Основная информация

Тип судна: Моторная яхта

Модельный год: 2002

Год постройки: 2002

Страна: United States

Верх: 2363

Размеры

Длина общая: 55' 0" (16.76m)

Ширина: 15' 11" (4.85m)

Скорость, вместимость и масса

Вместимость воды: 150 Gallons

Вместимость сточного бака: 68 Gallons

Объем топливного бака: 600 Gallons

Размещение

Всего кают: 2

Всего коек: 2

Спальные места: 4

Всего ком. состава: 2

Корпус и палуба

Материал корпуса: Fiberglass

Информация о двигателе

Двигатели: 2

Производитель: Caterpillar

Модель: 3196TA

Тип топлива: Diesel

ПОДРОБНОЕ ОПИСАНИЕ

Color

- Exterior - WHITE
- Interior - WHITE

Options

• Ultrawood - Cherry • Fabric Carpet Upgrade • DSS Satellite TV System • Transformer Shore Power • Spare Propellers w/Hold • Sun Pad - Forward Deck • Hydraulic Marine Lift • Autopilot ST 7001 • T-CAT3196TA Inboards • Water Delivery • Sea Ray Navigator • Radar-RL80C Open Array

Propulsion

• T-CAT3196TA Caterpillar® Diesel Inboards • (T-640 hp - 477 kW)

Hull & Deck Features

• Bottom Paint • Bow Rail, 316 Stainless Steel w/Welded Stanchions, Intermediate Rails • & Life Lines • Cleats, Stainless Steel Bollard-Style (8) • Deck Fill Plates, Stainless Steel • Deck Rails, 316 Stainless Steel • Gel-Coat, Arctic White • Graphics, Striping • Handrails, 316 Stainless Steel • Hatch, Deck Vent - Translucent w/Locks & Sky Screen Cover (20x20) • Lights, Navigation • Portlights, Stainless Steel (4 Fixed, 6 Opening) • Resin, High-Performance Vinylester • Rub Rail, Heavy-Duty PVC w/Stainless Steel Insert • Skylight, Circular - Salon • Skylight, Flush-Mount w/Retractable Sunshade - Salon • Storage, Fender - Transom Wall w/Light • Swim Platform, Extended w/Concealed Stainless Steel Ladder & Grab Handle • Vent System, Engine Room - Integral • Windshield, Tempered/Tinted Curved Glass w/Stainless Steel Frame, Electric Front Vent & Stainless Steel Supports • Windshield Washer System • Windshield Wipers (2)

Canvas (Sunbrella)

• Aft Curtain • Canvas Storage Bag • Front Curtains • Hardtop Enclosure • Side Curtains • Windshield Shades

Windlass System

• Anchor, Galvanized • Anchor Chain Storage w/Hatch • Anchor Chute, Stainless Steel • Anchor Washdown Spigot w/Hose • Windlass, Chain w/Foot Switches • Meets Applicable USCG &

ABYC Standards • NMMA Yacht Certification

Cockpit Features

• Beverage Holders, Stainless Steel • Carpet Liner, Snap-In • Cockpit, Self-Bailing Fiberglass w/Gas-Assisted Engine Room Service Hatch & Pivoting Stainless Steel Engine Room Ladder • Door, Cabin Entry (Sliding & Lockable) - Acrylic • Door, Transom • Handrails, 316 Stainless Steel • Hardtop, Fiberglass w/Stainless Steel Grab Rails & Overhead Lighting w/Electronic Dimmer • Ice maker, 120V • Lighting, Indirect w/Multiple-Way Switching Capability • Outlet, 12V Accessory • Outlet, 120V GFI Protected • Outlet, Cable TV • Refrigerator, Dual-Voltage - 120V/12V • Seating, Companion Bench - Euro-Styled • Seating, Helm - Custom Euro-Style w/Flip-Up Thigh-Rise Bolster, Armrests & Heavy-Duty Pedestal w/Slide, Swivel & Pneumatic • Vertical Adjustment • Seating, U-Shaped w/Electrically Actuated Retractable Sun Pad - Aft • Ship's Bell • Steps, Molded Deck Access w/Storage Below • Stereo, 12V AM/FM Single CD w/6-Disc CD Changer, Subwoofer, Amplifier, Speakers (4) & Digital Cockpit Remote Controls (2) (Clarion®) • Storage, Side Panels - Port & Starboard • Table, Cockpit - Hi-Lo Fiberglass w/Dedicated Storage • Wet Bar w/Sink, Cooler, Removable Trash Receptacle & Storage - Port

Cabin Features

• Carbon Monoxide Monitors • Carpet, Deep-Pile Stain-Resistant w/Padding • Carpet Runners, Interior (Sunbrella®) • Countertops, Granite-Colored (Solid Surface) • Curtains, Custom - Throughout • Handrails, Elliptical Stainless Steel • Lighting, 120V Halogen • Lighting, 120V Indirect • Lighting, 120V w/Dimmer Switch • Lighting, 24V Halogen • Outlets, 120V GFI Protected • Outlets, Phone • Pillows, Accent • Polished Chrome Outlet & Switch Plates • Storage, In-Floor • Vacuum System, Central - Dual Inlet (Beam®) • Wood Interior Package, Cherry (also available in Clear Maple)

Salon

• Entertainment Center - Outlet, Antenna & TV Coax to Dockside - Stereo, 120V w/Jewel Cube Speakers (2), LS Bass Module & Remotes (Bose®Lifestyle 20) - Storage, Cabinet - CD - Television, 42" Plasma Screen - VCR w/Remote • Seating, Sofa w/Electrically Operated Slide-Out Bed (Ultraleather HP™) • Shades, Fabric Day/Night w/Drape Trim • Storage, Gunwale Cabinets - Upper • Storage, In-Floor • Storage, Under Sofa - Forward • Table, Dining/Cocktail - High-Gloss Wood w/Bar Stool

Galley

• Coffeemaker, 120V (Spacemaker™) • Countertop, Granite-Colored (Solid Surface) w/Solid Surface Cutting Board & Sink w/Single-Lever Grohe® • Faucet • Microwave/Convection Oven,

120V • Outlet, 12V Accessory • Power Vent, 24V • Refrigerator/Freezer w/Icemaker - Upright - 120V (General Electric®) • Refrigerator, 120V Under-Counter (Waeco®) • Storage, Cabinets - Upper & Lower • Storage, Drawers w/Cutlery Inserts • Storage, Glass & Dish • Storage, In-Floor • Storage, Wine Rack (Custom - 12 Bottles) • Stove, 240V Recessed Three-Burner w/Solid Surface Cover (Kenyon®) • Trash Receptacle w/Chute & Solid Surface Cover

Master Stateroom

• Bed, Queen-Size w/Innerspring Mattress, Pillows, Sheets, Coordinated Spread & Carpeted Storage Below w/Gas-Assisted Hatch Door, Privacy w/Mirror • Hanging Locker, Full-Length Cedar-Lined w/Lights & Mirrored Doors - Starboard • Speakers (2) w/Subwoofer Base Module (Bose Acoustimass®) • Storage, Gunwale Cabinets • Storage, In-Floor • TV/VCR/Radio Combo, 13" w/Remote & Outlet for Antenna & TV Coax to Dockside • Vanity w/Solid Surface Countertop, Beveled Mirrors, Drawers & Storage Cabinet

Master Head

• Master Stateroom Head/Shower: • Bath Accessories, Chrome & Gold • Door, Privacy - Access From Master Stateroom • Flooring, Tile • Handrails, Elliptical Stainless Steel • Head, Large (VacuFlush®) • Power Vent, 24V • Shower w/Seat, Adjustable Shower Wand & Circular Acrylic Door • Storage, Cabinet - Upper • Storage, Medicine Cabinet - Mirrored • Vanity w/Molded Solid Surface Countertop w/Integral Solid Surface Sink, Grohe® Faucet, Drawers & Storage Below

Forward Stateroom

• Bed, Queen-Size w/Innerspring Mattress, Pillows, Sheets, Coordinated Spread, Drawers & Carpeted Storage Below w/Gas-Assisted Hatch • Hanging Locker, Full-Length Cedar-Lined w/Light • Mirrored Rope Locker Bulkhead • Storage, Cabinet w/Drawers - Port • TV/VCR/Radio Combo, 13" w/Remote & Outlet for Antenna & TV Coax to Dockside

Guest Head

• Bath Accessories, Chrome & Gold • Door, Privacy - Access from Forward Stateroom • Door, Privacy - Access from Salon • Flooring, Tile • Handrails, Elliptical Stainless Steel • Head, Large (VacuFlush®) • Power Vent, 24V • Storage, Cabinet w/Beveled Mirrors • Storage, Medicine Cabinet w/Beveled Mirrors • Vanity w/Molded Solid Surface Countertop w/Integral Sink, Grohe® Faucet, Drawers & Storage Below

Guest Shower

• Clothes Hook • Curtain, Shower • Door, Privacy - Access from Forward Stateroom • Handrails,

Elliptical Stainless Steel • Shower w/Seat, Adjustable Grohe® • Shower Wand & Circular Acrylic Door

Control Station

• Alarms, High-Water Bilge • Bow Thruster, 24V • Compass • Emergency Engine Stop • Emergency Start System - Engines • Horn, Air - 24V w/Accumulator Tank • Instrumentation - Fuel (3) - Multigauge (4 in 1) (2) • Gear Temperature (2) • Oil Pressure (2) • Voltmeters (2) • Water Temperature (2) - Tachometers w/LCD Hourmeters (2) • Panel, Switch - Backlit High-Gloss Burl • Panels, Instrument - High-Gloss Burl • Shift & Throttle Controls, Dual Hydraulic • Spotlight w/Dual Halogen Bulbs - Remote-Controlled (ACR®) • Steering, Hydraulic - Power-Assisted • Steering, Tilt Wheel • Steering Wheel, Wood-Accent • Switches, Weatherproof Rockers & Electronic Dimmer Control • Systems Monitor, Digital LCD - for Engine Diagnostics & Pump Monitoring

Electronics

• Multifunction Instrument (Raymarine Tridata ST-60) - Depth Finder - Speed/Sumlog - Water Temperature • Telephone/Intercom System w/Antenna • VHF Radio (Raymarine 230) w/Remote Speaker & 8' Antenna

Electrical Systems

• Batteries, 8-D w/Boxes (4) & Group 27 For Genset (1) • Battery Charger/Converter, 120V/10 Amp/12V • Battery Charger/Converter, 240V/50 Amp/24V • Battery Charger Overcurrent Protection • Battery Equalizer, 50 Amp (2) • Battery Solenoid Switches, 12V (2), 24V (2) • Cablemaster w/120V/50 Amp/60 Cycle Shore Power, 50' Cord & Remote (Glendinning) • Electronics Circuit, 50 Amp/12V • Inlet, Cable Television w/Cord • Panel, DC Main Breaker • Panel, Main Distribution - AC • Panel, Main Distribution - DC • Panel, Remote Circuit Breaker • Shore Power, Cablemaster (Glendinning) 50 Amp/240V/60 Cycle w/50' Cord & Wireless Remote • Transformers, Shore Power Isolation (50 Amp, 120V/60 Cycle) • Wiring, Color-Coded & Labeled w/Chafe Protection

Generator

• Remote Start w/Muffler, Freshwater Cooling, Fuel Filter, Seacock & Seawater Strainer (240V/60 Cycle) • 15.0 kW Westerbeke™ Diesel w/Sound Box

Air Conditioning/ Heating

• Zone-Controlled Reverse-Cycle Split System, 240V (Compressor Units in Engine Room, Air Handlers in Cabin) • (30,000 BTU - 2.5-Tons) • Custom Integral Vent System • Reverse-Cycle Split System (Compressor Units in Engine Room, Air Handlers in Cockpit) (32,000 BTU, 240V/60 Cycle)

Engine Room

• Bilge Pumps, 24V Automatic (1 Aft, 1 Fwd) • Bilge Pumps, 24V Automatic High-Water (1 Bilge, 1 Fwd Cabin) • Blowers, 24V Bilge (2) • Engine Drip Sumps • Exhaust, Power Pac/Lift System Mufflers • Fire Extinguishers • Fire Suppression System - Automatic w/Diesel Shutdown, Override & Manual Pull • Flooring, Fiberglass Diamond Plate • Freshwater Cooling • Gel-Coated Engine Room, White • Insulation, 2" w/Loaded Vinyl Barrier • Ladder, Stainless Steel - Removable • Lighting, 24V • Oil Changer System - Engines, Transmissions & Generator • Synchronizer, Engines

Fuel System

• Bilge Pumps, 24V Automatic (1 Aft, 1 Fwd) • Bilge Pumps, 24V Automatic High-Water (1 Bilge, 1 Fwd Cabin) • Blowers, 24V Bilge (2) • Engine Drip Sumps • Exhaust, Power Pac/Lift System Mufflers • Fire Extinguishers • Fire Suppression System - Automatic w/Diesel Shutdown, Override & Manual Pull • Flooring, Fiberglass Diamond Plate • Freshwater Cooling • Gel-Coated Engine Room, White • Insulation, 2" w/Loaded Vinyl Barrier • Ladder, Stainless Steel - Removable • Lighting, 24V • Oil Changer System - Engines, Transmissions & Generator • Synchronizer, Engines

Water System

• Freshwater Hose & Spigot - Engine Room • Freshwater Washdown & Dockside Inlet w/Cockpit Shower - Hot & Cold • Pressure Water System w/Dual 24V Pumps • Water Heater, 240V (20-Gallon) • Water Manifold System • Water Tank (150-Gallon)

Waste System

• Cabin Sump Pump, 24V - Shower/Air Conditioning Condensate • Central Drain System • Head System (VacuFlush®) • Holding Tank Level Indicators - MDP & Heads • Holding Tank w/Dockside Pump-Out (68-Gallon) • Macerator w/Seacock Interlock System

Underwater Gear

• Bonding System w/Large Zinc Hull Plate • Propeller Shafts, 2 1/2" Stainless Steel (2) - Aquamet 22 • Propellers, Nibral 4-Blade Cup • Rudders - Manganese-Bronze w/Stainless Steel

Posts • Seacocks On All Underwater Fittings • Seawater Strainers • Shaft Logs, Dripless w/Extra Seal Carrier Kit • Struts - Manganese-Bronze • Trim Tabs, 24V Hydraulic Transom-Mounted, Heavy-Duty, Dual Rams w/Pump

Исключения

При продаже яхты исключаются личные вещи владельца.

Отказ от ответственности

Компания предоставляет описание судна или яхты добросовестно, но не может гарантировать точность этой информации, а также не ручается за техническое состояние. Покупатель должен проинструктировать своих агентов или оценщиков исследовать представленную информацию более подробно, по собственному желанию. Продажа судна или яхты, изменение цены или снятие с продажи будет происходить без предварительного уведомления.

ФОТОГРАФИИ

Bridge



Bridge



Сockpit



Salon



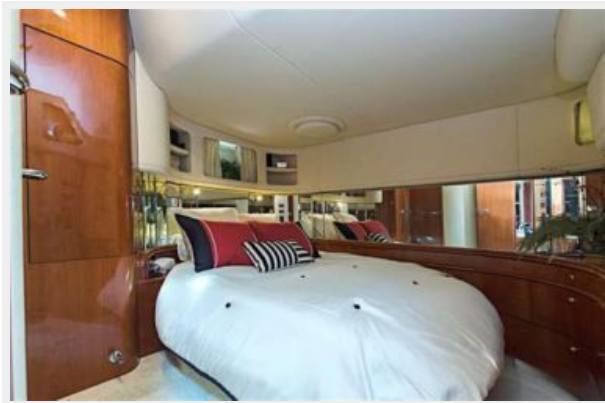
Salom



Master Stateroom



Guest Stateroom



Master Head



Guest Shower



Port Profile



КОНТАКТЫ

Андрей Шестаков (Andrey Shestakov) – ведущий яхтенный брокер отдела продаж яхт и судов компании Shestakov Yacht Sales Inc. Официальный представитель Shestakov Yacht Sales Inc. для русскоговорящих клиентов в центральном офисе компании в Майами/Форт Лодердейл/Флорида/США.

Контактная информация

Email: andrey@shestakovyachtsales.com

Web: shestakovyachtsales.com

Телефоны

Краснодарский край: **+7(918)465-66-44**

США, Майами, Флорида: **+1(954)274-4435**

Время работы

Понедельник – Суббота: **9:00 - 21:00**
EDT

Воскресенье: **Закрито**

Адрес



Harbour Towne Marina, 850 NE 3rd St,
STE 213, Dania, FL 33004