

57' 1999 BAYLINER 5788 PILOT HOUSE MOTOR YACHT — BAYLINER



Builder: BAYLINER

LOA: 57' 0" (17.37m)

Year Built: 1999

Beam: 17' 2" (5.23m)

Model: Motor Yacht

Price: PRICE ON APPLICATION

Location: United States

Our experienced yacht broker, Andrey Shestakov, will help you choose and buy a yacht that best suits your needs 57' 1999 Bayliner 5788 Pilot House Motoryacht — BAYLINER from our catalogue. Presently, at Shestakov Yacht Sales Inc., we have a wide variety of yachts available on our sale's list. We also work in close contact with all the big yacht manufacturers from all over the world.

If you would like to buy a yacht 57' 1999 Bayliner 5788 Pilot House Motoryacht — BAYLINER or would like help answering any questions concerning purchasing, selling or chartering a yacht, please call +1(954)274-4435

TABLE OF CONTENTS

TABLE OF CONTENTS	2
SPECIFICATIONS	3
Basic Information	3
Dimensions	3
Speed, Capacities and Weight	3
Accommodations	3
Hull and Deck Information	3
Engine Information	3
DETAILED INFORMATION	4
Manufacturer Provided Description	4
Generator	4
Exclusions	5
Disclaimer	5
PHOTOS	6
Manufacturer Provided Image	6
Manufacturer Provided Image	6
Manufacturer Provided Image	6
Manufacturer Provided Image	6
CONTACTS	25
Contact details	25
Telephones	25
Office hours	25
Address	25

SPECIFICATIONS

Basic Information

Category: Motor Yacht

Model Year: 1999

Year Built: 1999

Country: United States

Dimensions

LOA: 57' 0" (17.37m)

Beam: 17' 2" (5.23m)

Clearance: 14' 2" (4.32m)

Speed, Capacities and Weight

Displacement: 53000 Pounds

Water Capacity: 226 Gallons

Holding Tank: 76 Gallons

Fuel Capacity: 800 Gallons

Accommodations

Total Berths: 6

Hull and Deck Information

Hull Material: Fiberglass

Engine Information

Engines: 2

Manufacturer: MAN

Model: Turbo Diesel

Engine Type: Inboard

Fuel Type: Diesel

DETAILED INFORMATION

Manufacturer Provided Description

Comfort aboard the Bayliner 5788 Pilot House Motoryacht begins with its superior ride and handling. The hull's fine forefoot gracefully broadens to a hard-chine modified V-bottom to provide a smooth ride and sharp turns. Twin MAN diesel inboards deliver quiet, assured power and efficient all-day cruising. Exterior decks allow ease of movement and plentiful lounge seating while the spacious cockpit provides access to a large boarding platform aft. There is enough space for a tender up to eleven-feet in length. Its 800-gallon tankage brings distant cruise destinations within reach. The 5788's styling combines traditional ambiance and a dramatic contemporary line. Attention to detail and premium materials throughout - warm polished wood paneling and trim, solid-surface countertops, and wear-dated interior carpet complete an environment of luxury and lasting appeal. The main salon offers plenty of room for entertaining and has easy access to the pilot house. The lavishly appointed owner's stateroom ensures complete comfort. An entertainment cabinet and wet bar provide focus for social gatherings. The home-style electric galley offers full sized appliances and Avonite countertops. The main salon affords a sweeping view from the ergonomically designed L-lounge complete with high - low cocktail table and ottomans. The 5788 includes a fully-equipped pilot house, and the privacy of three separate and gracious staterooms. PROPULSION: Compact, powerful, and economical, MAN diesel engines assure top-class propulsion, are environmentally compatible, and offer the advantages of low-cost, large-scale series production. For over 100 years MAN has been linked with the development and advancement of the diesel engine. Together with MAN, Rudolf Diesel developed the most economical heat engine in the world. MAN has consistently remained at the forefront of virtually every refinement in high efficiency, low fuel consumption, high reliability, and long life. With an international network of MAN Marine Diesel Engine outlets, you are assured of expert service wherever you may go. BAYLINERS: Bayliner has built and delivered more boats in the 30-foot-plus range than most other builders combined; by building products whose superiority and value are clearly evident, and then by backing them up with unexcelled service and dealer professionalism. By virtue of size, Bayliner wields enormous purchasing power. Insisting on the finest materials and components, and receiving maximum volume discounts, enable them to avoid artificially high price tags. Combined with regional manufacturing centers, company-owned trucks, and a long list of advanced manufacturing technologies, you have truly superior value.

Generator

- Westerbeke Generator
- 15 KW
- 1730 original hours
- Professionally maintained

Exclusions

Owner's personal belongings.

Disclaimer

The Company offers the details of this vessel or yacht in good faith but cannot guarantee or warrant the accuracy of this information nor warrant the condition of the vessel. A buyer should instruct his representatives, agents, or his surveyors, to investigate such details as the buyer desires validated. This vessel or yacht is offered subject to prior sale, price change, or withdrawal without notice.

PHOTOS



Manufacturer Provided Image



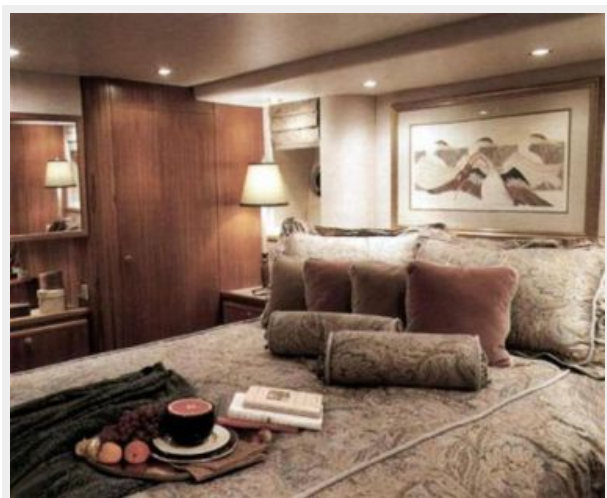
Manufacturer Provided Image

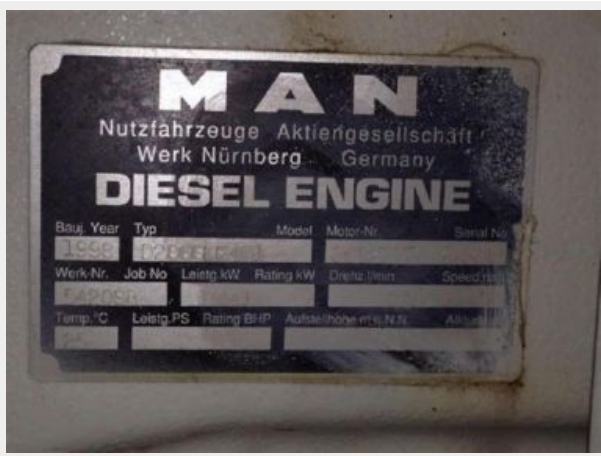


Manufacturer Provided Image



Manufacturer Provided Image









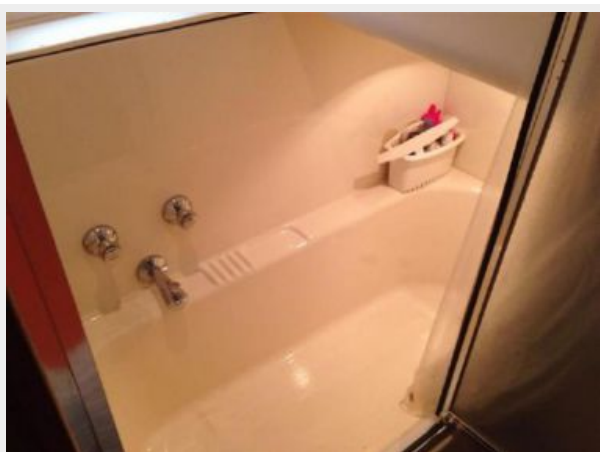
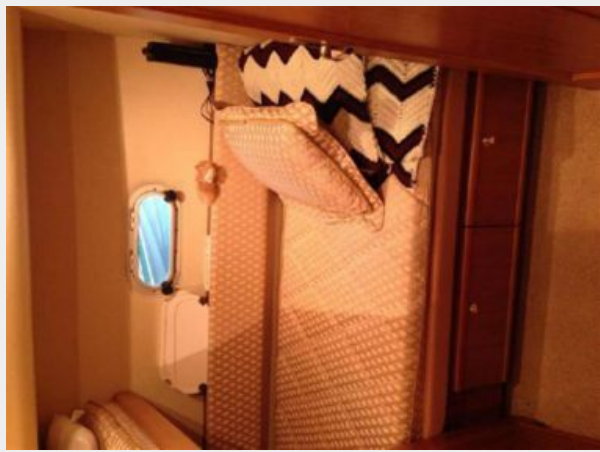




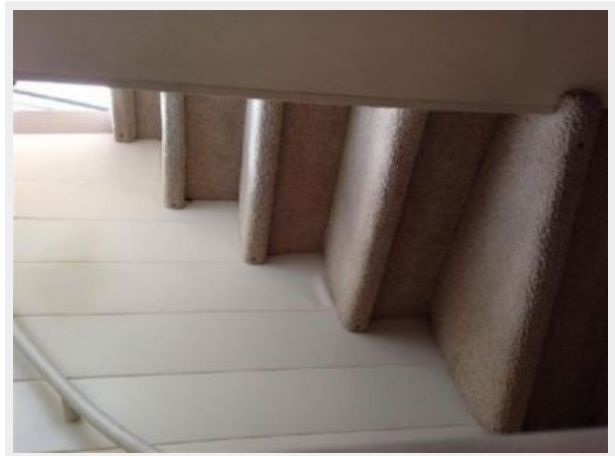


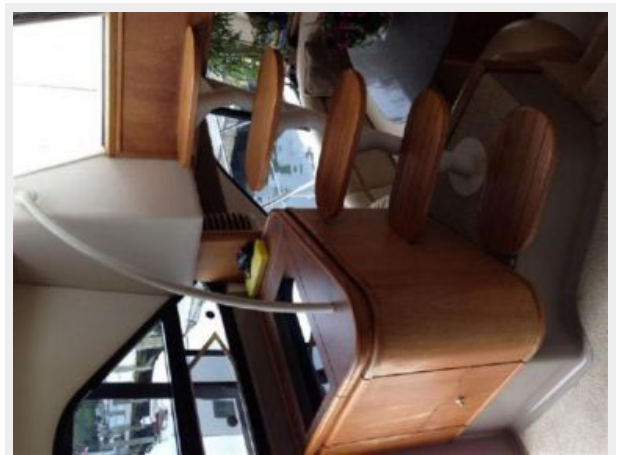
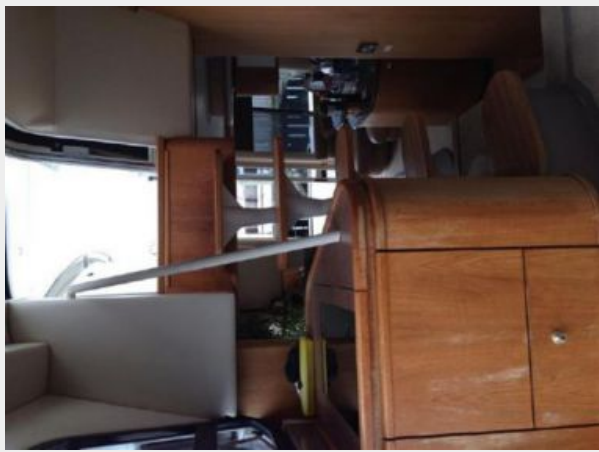


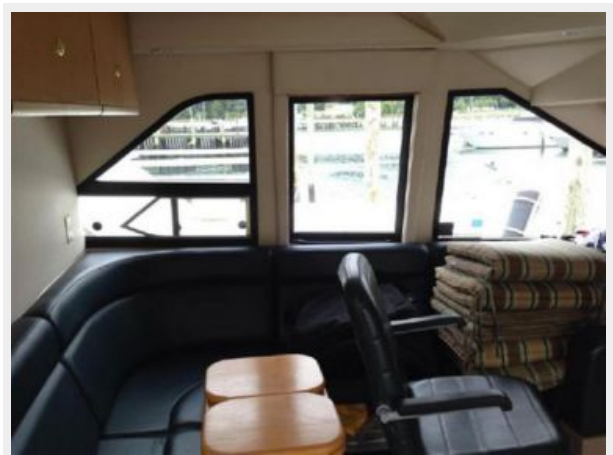




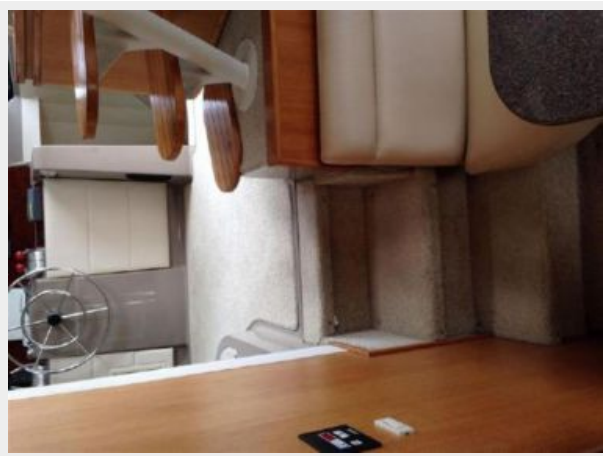
















CONTACTS

Andrey Shestakov, leading yacht broker of the sales department of Shestakov Yacht Sales Inc. Shestakov Yacht Sales Inc., the official representative of the Miami/Fort Lauderdale FL headquarters.

Contact details

Email: andrey@shestakovyachtsales.com

Web: shestakovyachtsales.com/en/

Telephones

USA: +1(954)274-4435

Office hours

Monday – Saturday: **9:00 - 21:00** EDT

Sunday: **closed**

Address



Harbour Towne Marina, 850 NE 3rd St,
STE 213, Dania, FL 33004