

DOUBLE TROUBLE — SEA RAY



Builder: SEA RAY

Year Built: 1998

Model: Sport Fisherman

Price: PRICE ON APPLICATION

Location: United States

LOA: 55' 0" (16.76m)

Beam: 15' 0" (4.57m)

Max Draft: 4' 2" (1.27m)

Our experienced yacht broker, Andrey Shestakov, will help you choose and buy a yacht that best suits your needs **Double Trouble — SEA RAY** from our catalogue. Presently, at Shestakov Yacht Sales Inc., we have a wide variety of yachts available on our sale's list. We also work in close contact with all the big yacht manufacturers from all over the world.

If you would like to buy a yacht **Double Trouble — SEA RAY** or would like help answering any questions concerning purchasing, selling or chartering a yacht, please call **+1(954)274-4435**

TABLE OF CONTENTS

TABLE OF CONTENTS	2
SPECIFICATIONS	5
Overview	5
Basic Information	5
Dimensions	5
Speed, Capacities and Weight	5
Accommodations	6
Hull and Deck Information	6
Engine Information	6
DETAILED INFORMATION	7
Manufacturer Description	7
Accommodations	7
Galley	8
Heads	8
Deck and Hull	8
Electrical	9
Mechanical Equipment	9
Cockpit	10
Flybridge	10
Master Stateroom	10
Starboard Guest Stateroom #1	11
Port Guest Stateroom #2	11
Electronics and Navigation	11
Exclusions	12
Disclaimer	12
PHOTOS	13
Starboard Aft Profile	13
Underway	13

Salon Sofa/Lounge	13
Factory Floorplan Layout	13
Salon Starboard Forward	13
Salon Port Forward	13
Backlighted Bar Storage	14
Salon Aft	14
Breakfast Bar with Swivel Bar Stools	14
Entertainment Center Salon	14
Dinette to Port Across from Galley	14
Dinette 2	14
Forward Windshield View	15
Built in Compactor	15
Galley forward to Starboard	15
Galley	15
Companionway Steps to Staterooms	15
Master Stateroom	15
MSR Cedar Lined Hanging Locker	16
Master Stateroom Vanity/Dressing Area	16
MSR Head	16
MSR Head	16
Guest Stateroom 2 with adjacent Dressing area	17
Guest Stateroom 3/ Bunks	17
Guest stateroom 3	17
Guest/day Head	17
Guest/day Head	18
Washer/Dryer in Guest stateroom 3	18
Engine room	18
Engine room	18
Engine room	18

Engine Room	18
Engine Room	19
Engine Room	19
Forward Windshield with Privacy/Sunshade	19
Aft view	19
Forward Flybridge Refrigerator/Icemaker/Wetbar	19
Bridge Overhead Electronics	19
Helm station	20
Helm Station electronics	20
Port/Starboard Aft Cockpit Seating	20
Bench Lounge Forward of Bridge Console	20
Cockpit Seating	20
Molded Stairway to Bridge	20
Cockpit Wicker Table/Chairs	21
Anchor Pulpit	21
Dual Automatic Shorepower Cable Masters/Controls	21
Windlass	21
"550"	21
Dockside Port Aft	21
CONTACTS	22
Contact details	22
Telephones	22
Office hours	22
Address	22

SPECIFICATIONS

Overview

REDUCED AGAIN 5/5/2015 SELLER'S MOTIVATED CLEAN CONVERTIBLE/TRAWLER (40' Range) ENTERTAINED IN TRADE REASONABLE CASH OFFER ENCOURAGED

Double Trouble is Brand new to the market and has been Captain maintained and is without doubt the cleanest, well kept and most updated DDEC powered 55 Sedan Bridge on the market having just undergone extensive updating and upgrading (2013) of ALL NEW electronics including Navigation systems, Intellian Satellite TV System, Flat Screen TV's, Sirius Stereo system, DDEC engine electronics upgraded to NEW, Bottom refreshed and barrier coated and freshly painted.

Basic Information

Category: Sport Fisherman

Sub Category: Convertible

Model Year: 1998

Year Built: 1998

Country: United States

Vessel Top: Hardtop

Fly Bridge: Yes

Cockpit: Yes

Dimensions

LOA: 55' 0" (16.76m)

Beam: 15' 0" (4.57m)

Max Draft: 4' 2" (1.27m)

Clearance: 15' 5" (4.70m)

MFG Length: 57' 10" (17.63m)

Speed, Capacities and Weight

Displacement: 45700 Pounds

Water Capacity: 200 Gallons

Holding Tank: 40 Gallons

Fuel Capacity: 700 Gallons

Accommodations

Total Cabins: 3

Total Berths: 3

Sleeps: 8

Total Heads: 2

Hull and Deck Information

Hull Material: Fiberglass

Hull Configuration: Modified Deep Vee

Hull Color: White

Engine Information

Engines: 2

Manufacturer: Detroit Diesel

Model: Detroit Diesel

Engine Type: Inboard

Fuel Type: Diesel

DETAILED INFORMATION

Manufacturer Description

Manufacturer Provided Description The Sea Ray 550 Sedan Bridge combines the performance and advanced styling of a Sedan Bridge with the spacious and elegant liveaboard accommodations of a 55-foot luxury yacht. The 22-foot flybridge offers seating for eight. The large bridge features an advanced bridge control station, snap-in carpet, an adjustable captain's chair, and two companion helm seats. Additional seating is found on the bridge bench seat, near the bridge entertainment center, which is complete with an ice maker and stereo. The fiberglass companionway provides wide, non-skid textured steps to the cockpit area. Through-bolted stainless steel grab rails ensure an extra measure of safety. In the cockpit, guests can relax in upholstered aft corner banquettes, separated by a center transom door that leads out to the swim platform. From the cockpit, a large glass sliding door leads to the cabin featuring 66-ounce Masland carpeting. To port is the entertainment center and a comfortable easy chair. To starboard, a 10-foot wraparound sofa provides seating for a large party of guests. The sofa will also serve as comfortable sleeping accommodations for two adults. The galley comes complete with a three-burner cooktop, microwave - convection oven, refrigerator - freezer, icemaker, trash compactor and lots of counter space. To port is a convertible dinette where meals are served amid a spectacular view. Forward and down three carpeted steps, lie the staterooms. The spacious master suite includes a full-size island bed with custom coordinated linens, and plentiful storage underneath. Multiple cedar lined storage lockers and shelves, a large mirrored vanity with storage drawers, and a private head with vanity and shower complete the stateroom. Directly above the bed, a screened translucent deck hatch provides natural light and fresh air, as desired. To port, the crew quarters provide comfortable sleeping for two. The berth also includes a washer - dryer, convenient to both upper and lower decks, as is the central vacuum system. The guest head is also portside, and includes a vanity and stall shower. In the starboard stateroom, guests enjoy a queen berth with storage lockers underneath and overhead, a convenient mirrored vanity with stool and cedar-lined hanging locker.

Accommodations

VESSEL WALKTHROUGH : (Starting Forward in Staterooms) The master stateroom is forward with centerline queen bed. 2 full length cedar lined hanging lockers to port with a single cedar lined hanging locker to starboard. The ensuite master head is also to starboard and features a vacuflush MSD, vanity and sink with a separate stall shower. Next aft to port is the guest head which also has a vacuflush MSD, vanity sink and a separate stall shower. Next aft to port is a guest stateroom with upper and lower bunks. Opposite to starboard is the third guest stateroom which has a double bed. Next aft and up 4 steps is the main salon and galley area. The large U-shaped galley is to starboard. (See below for more data on the galley). Opposite to port is a fore and aft 4 seat dinette which converts to sleep 2 persons. Next aft is a built-in entertainment center featuring newly installed (2013) Intellion wireless entertainment system with Flatscreen Color

TV, DVD/VCR, and AM/FM stereo system with CD changer and BOSE speakers. Opposite to starboard is a large L-shaped Beige leather settee. Pastel tan interior with upgraded carpeting and carpet runners throughout. Cherrywood interior. Access to the large cockpit area is through a sliding glass door from the salon.

Galley

The large galley is up to starboard and has oak wood flooring. Undercounter refrigerator and separate undercounter freezer. Kenyon flush mount 3 burner electric cooktop, Convection/microwave oven, Trash compactor, back lighted Glass and dish storage. Nutone blender. Built-In spacemaker coffee maker. Pressure fresh water system. Hot water heater. Central vacuum system.

The galley is separated from the main salon by a breakfast bar with 2 stools.

Heads

She offers two heads. The master is ensuite with vanity with sink, mirror & good storage, a stall shower and Vacuflush marine toilet. The guest head also has a vanity with sink, mirror and storage, a stall shower with built-in seat and Vacuflush marine toilet. Both toilets flush to the holding tank that may be discharged dockside or mascerated overboard where legal and proper.

Deck and Hull

- Fiberglass Hardtop with Full Enclosure on Flybridge
- Air conditioned Flybridge
- Bridge Wetbar with Refrigerator and separate icemaker
- Snap on Helm/console Cover
- Stainless steel Bow and safety rails
- Lofrans Anchor Windlass
- Molded Stairwell Cockpit to Flybridge
- Navigation lights
- Fresh water washdown
- Docklines and Fenders
- Corner Transom Bench Seats in cockpit Port and Starboard
- Centerline Transom Door
- Molded in integrated Swim Platform
- Port and Starboard Boarding steps
- Hot and Cold transom Shower
- Transom Storage Lockers

- Tan Cockpit Cover Aft Bridge to Transom (2012)

Electrical

- 12 Volt (AC) 24 Volt and 12 Volt AC System
- 15 KW Westerbeke Generator with Soundshield/ 2259 Hours Use
- 240 Volt AC and 110 Volt AC system
- Cablemaster 240V/50 amp Automatic Retracting Shorepower cable
- Cablemaster 110V/50 amp Automatic Retracting Showerpower cable
- 6 batteries with Parallel switch
- Automatic battery Chargers 12V & 24V (2013)

Mechanical Equipment

- (4) Zone Cruisair Reverse Cycle Air conditioning/Heat 4 Units
- 24 Volt Automatic Oil Change system/Engines,Generator
- 2 Bilge Blowers
- Bennett Trim tab
- Crossover fuel system
- Dual Racor Filters
- Hi water Alarm system
- Hydraulic engine Controls
- Fuel shut-off Valve
- 2 Vacu-Flush Heads with Holding Tank
- Auto Halon Fire Extinguishing system (2013)
- Emergency Engine Stops (2013)
- Central vacuum system
- Fresh water cooling engines and generator
- Sea Strainers/ engines, Generator, Air conditioners
- Automatic Bilge Pumps (2 in Bilge, 1 in Lazarette, 1 in FWD Cabin)
- High Water Bilge Alarms w/ 2 Back-Up Bilge Pumps (1 in Bilge & 1 Forward)
- Electric Bilge Blowers (2-24V)
- Hydraulic Steering (Capilano® by Teleflex) (2013)
- Backlit Switch Panel w/ Weatherproof Rocker Switches, Circuit Breakers,
- Indicator Lights & Dimmer Control
- Twin Disc shift and throttle controls (Electronics 2013)
- Custom SeaRay Backlit Instrumentation w/ Low-Glare Blue Night
- Lighting (24V)
- Tachometers 2 (2013)
- Oil Pressure Gauges 2 (2013)
- Water Temperature Gauges 2 (2013)
- Voltmeters 2 (2013)

- Electric Fuel Gauges & Hour Meters (2 bridge & 1 in the bilge) (2013)
- (2) Spare Props

Cockpit

- Self Bailing Fiberglass Cockpit
- Indirect Cockpit Lighting
- Transom Door
- Aft Deck Storage Lockers
- Molded Side Deck Access Steps Cockpit Storage Box (Flush)
- Gas-Assisted Bilge Access Hatch
- Aft Cockpit Seats

Flybridge

- Cruisair Comfort Control Systems Air Conditioning
- Stainless Steel Bridge Safety Rails
- Molded Fiberglass Bridge Access Steps w/ Storage
- Burl Instrument Panels
- Aluminum Framed Venturi Shield
- Adjustable Captain's Chair (2)
- Forward Curved Bench Seating w/ Forward Storage
- Bridge Cockpit Courtesy Lights
- Bridge Storage
- Aft Bench Seat
- Bridge Ice maker
- Bridge Refrigerator
- Entertainment Center for Bridge
- 120V/60 Cycle) 12V Clarion AM/FM Sirius Stereo w/ Single CD Player, Amplifier, & 6 Speakers

Master Stateroom

- Queen Size Bed w/ Innerspring Mattress, Pillows, Sheets, & Coordinated Spread w/ Storage Below
- Side Storage Shelves
- Rope Locker Access
- Vanity w/ Mirrors
- Cedar Lined Hanging Locker w/ Mirror Door
- Floor Storage Compartment

- MASTER HEAD/SHOWER
- VacuFlush® Head
- Molded Vanity w/ Sink, Mirror w/ Storage Below
- Grohe® Designer Faucet
- Privacy Door
- Power Vent
- Acrylic Accessories/Handrails
- Vanity Stool
- Entertainment Center For Master Stateroom
- Color TV/VCR/Radio Combo w/ AntennaBose® Acoustimas 3 Speakers

Starboard Guest Stateroom #1

- Full Size Bed w/ Pillows, Sheets, & Coordinated Spread w/ Storage Below
- Color TV/VCR/Radio Combo w/ Antenna
- Vanity w/ Mirrors
- Cedar-Lined Hanging Locker
- Hull Windows

Port Guest Stateroom #2

- Color TV/VCR/Radio Combo w/ Antenna
- Upper & Lower Bunks
- Cedar-Lined Hanging Locker
- Hull Windows
- Washer Dryer Combination
- Vanity w/ Sink & Storage Below
- Grohe® Designer Faucet
- Mirrored Medicine Cabinet
- VacuFlush® Head
- Stall Shower

Electronics and Navigation

- Furuno NAVNET 3D Chartplotter with 12.1 Display/3D Graphics (2013)
- Simrad AP 28 Auto Pilot (2013)
- Vetus Bow Thruster
- Clarion Satellite/Stereo on Bridge (2013)
- Standard Horizon Matrix GX 2000 VHF Radio with Remote Hailer & Emergency

Distress (2013)

- RCL 106 Twin Beam Remote Searchlight (2013)
- Furuno 48 Mile Radar
- Raytheon Tridata Speed/Log/Temp (2013)
- Intellian SAT Entertainment System through entire boat (2013)
- 32" Hitachi Flatscreen TV (Salon) (2013)
- Sony BlueRay CD/DVD (Salon) (2013)
- Bose Surround sound System (Salon& Master)
- Samsung 22" Flatscreen (Master Stateroom) (2013)
- Panasonic TV (Starboard side Guest stateroom)

Exclusions

Owner's personal belongings.

Disclaimer

The Company offers the details of this vessel or yacht in good faith but cannot guarantee or warrant the accuracy of this information nor warrant the condition of the vessel. A buyer should instruct his representatives, agents, or his surveyors, to investigate such details as the buyer desires validated. This vessel or yacht is offered subject to prior sale, price change, or withdrawal without notice.

PHOTOS

Starboard Aft Profile



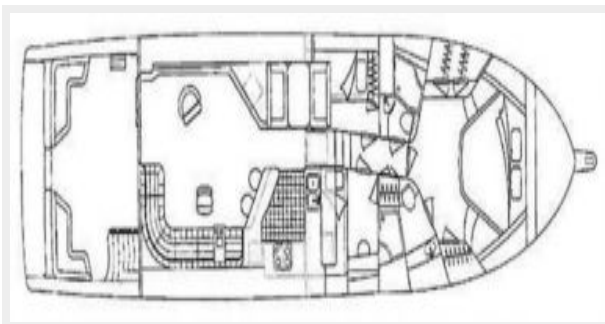
Underway



Salon Sofa/Lounge



Factory Floorplan Layout



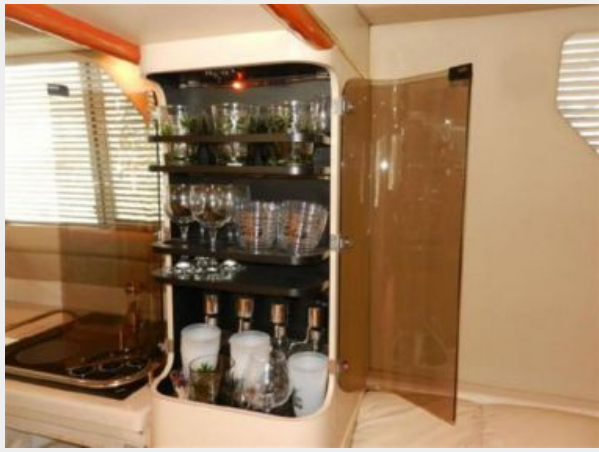
Salon Starboard Forward



Salon Port Forward



Backlighted Bar Storage



Salon Aft



Breakfast Bar with Swivel Bar Stools



Entertainment Center Salon



Dinette to Port Across from Galley



Dinette 2



Forward Windshield View



Built in Compactor



Galley forward to Starboard



Galley



Companionway Steps to Staterooms

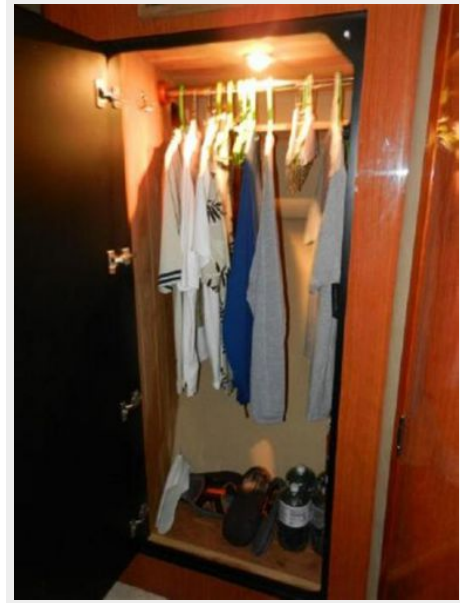


Master Stateroom



MSR Cedar Lined Hanging Locker

Master Stateroom Vanity/Dressing Area



MSR Head



MSR Head



Guest Stateroom 2 with adjacent Dressing area



Guest Stateroom 3/ Bunks



Guest stateroom 3



Guest/day Head



Guest/day Head



Washer/Dryer in Guest stateroom 3



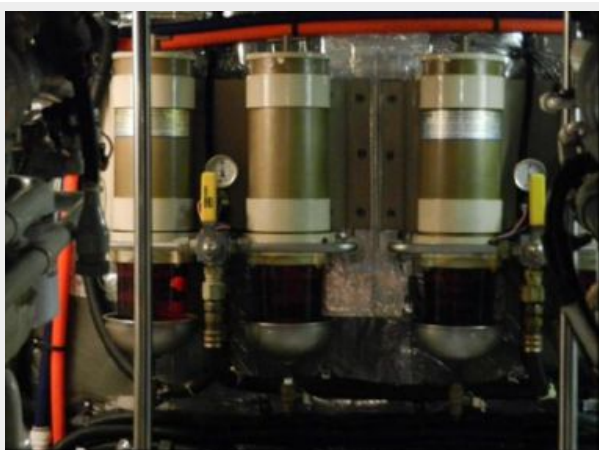
Engine room



Engine room



Engine room



Engine Room



Engine Room



Engine Room



Forward Windshield with Privacy/Sunshade



Aft view



**Forward Flybridge
Refrigerator/Icemaker/Wetbar**



Bridge Overhead Electronics



Helm satation



Helm Station electronics



Port/Starboard Aft Cockpit Seating



Bench Lounge Forward of Bridge Console



Cockpit Seating



Molded Stairway to Bridge



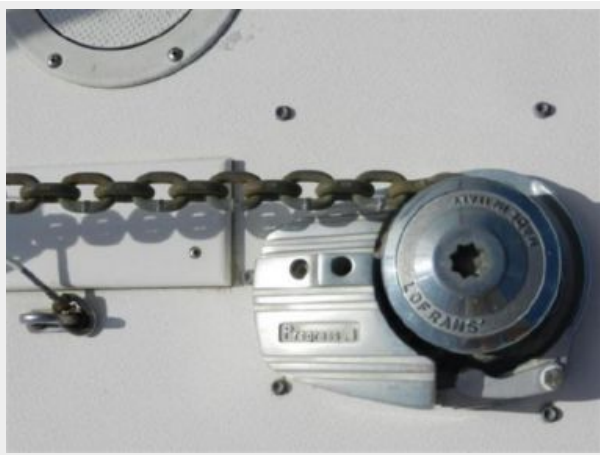
Cockpit Wicker Table/Chairs



Anchor Pulpit



Windlass



Dual Automatic Shorepower Cable Masters/Controls



"550"



Dockside Port Aft



CONTACTS

Andrey Shestakov, leading yacht broker of the sales department of Shestakov Yacht Sales Inc. Shestakov Yacht Sales Inc., the official representative of the Miami/Fort Lauderdale FL headquarters.

Contact details

Email: andrey@shestakovyachtsales.com

Web: shestakovyachtsales.com/en/

Telephones

USA: +1(954)274-4435

Office hours

Monday – Saturday: **9:00 - 21:00** EDT

Sunday: **closed**

Address



Harbour Towne Marina, 850 NE 3rd St,
STE 213, Dania, FL 33004