

## DAYDREAM BELIEVER — NORTH SHORE BOAT



**Судостроитель:** NORTH SHORE BOAT

**Год постройки:** 2010

**Модель:** Крейсерская яхта

**Цена:** ЦЕНА ЯХТЫ ПО ЗАПРОСУ

**Местонахождение:** United Kingdom

**Длина общая:** 49' 7" (15.11m)

**Ширина:** 13' 9" (4.19m)

**Мин. осадка:** 2' 11" (0.89m)

**Макс. осадка:** 10' 4" (3.15m)

Купить **DAYDREAM BELIEVER — NORTH SHORE BOAT** а также выбрать подходящую вам яхту из нашего каталога яхт вам поможет опытный яхтенный брокер Андрей Шестаков. На сегодняшний день компания **Shestakov Yacht Sales Inc.** имеет большое количество яхт в собственном списке продаж, а также тесно сотрудничает со всеми крупными яхтенными производителями по всему миру.

Для того чтобы купить яхту **DAYDREAM BELIEVER — NORTH SHORE BOAT** а также проконсультироваться по любому вопросу связанному с покупкой, продажей, чартером яхт позвоните по телефону **+7(918)465-66-44**.

# ОГЛАВЛЕНИЕ

---

ОГЛАВЛЕНИЕ	2
ХАРАКТЕРИСТИКИ	4
Обзор	4
Основная информация	4
Размеры	4
Скорость, вместимость и масса	4
Размещение	4
Корпус и палуба	5
Информация о двигателе	5
ПОДРОБНОЕ ОПИСАНИЕ	6
Brokers Comments	6
Owner's Comments	6
Construction	6
Machinery	8
Electrical Systems	8
Plumbing Systems	9
Tankage	10
Navigation Equipment	10
Domestic Equipment	11
Accommodation	12
Deck Equipment	16
Исключения	19
Отказ от ответственности	19
ФОТОГРАФИИ	20
КОНТАКТЫ	26
Контактная информация	26
Телефоны	26
Время работы	26

---

Адрес

26

# ХАРАКТЕРИСТИКИ

## Обзор

Young example of these ever popular variable draft bluewater cruisers.

## Основная информация

Тип судна: Крейсерская яхта

Модельный год: 2010

Год постройки: 2010

Страна: United Kingdom

## Размеры

Длина общая: 49' 7" (15.11m)

Длина по ватерлинии: 44' 11" (13.69m)

Ширина: 13' 9" (4.19m)

Мин. осадка: 2' 11" (0.89m)

Макс. осадка: 10' 4" (3.15m)

## Скорость, вместимость и масса

Водоизмещение: 33951.188348 Pounds

Вместимость воды: 143.97376834  
Gallons

Объем топливного бака: 108.31054132  
Gallons

## Размещение

Всего кают: 3

Всего коек: 6

Всего ком. состава: 2

## Корпус и палуба

---

**Материал корпуса:** GRP

**Материал палубы:** GRP

**Комплектация корпуса:** Centerboard

**Дизайнер корпуса:** Rob Humphreys

## Информация о двигателе

---

**Двигатели:** 1

**Производитель:** Yanmar

**Модель:** 4JH5-E

**Тип двигателя:** Inboard

**Тип топлива:** Diesel

---

# ПОДРОБНОЕ ОПИСАНИЕ

---

## Brokers Comments

---

The Southerly 49 is a true all round cruising yacht, with the variable draft, giving her access far from the madding crowds. DAYDREAM BELIEVER is offered at a fraction of the replacement cost, has been lightly used in her fastidious ownership, has superb residual value, and offers a very secure and enjoyable yacht ownership.

## Owner's Comments

---

We bought DAYDREAM BELIEVER in 2010 as we planned to tour the Med. She was used by Southerly as the 2010 Southampton Boat Show yacht. We took her to the Med through the Canal du Midi; she must have been the largest yacht to have ever gone through. The Med tour lasted as far as Mallorca, at which point we bought a house and intend to day sail from there. DAYDREAM BELIEVER will be replaced with a smaller yacht for this.

I originally chose the Southerly 49 for 2 reasons – the windward sailing performance from having such a long keel, and the light and visibility from the deck saloon design; I was not too bothered about the lifting keel.

Having now owned a Southerly 49 I would rate the lifting keel very highly. It is great to be able to anchor inshore of everyone else, and when anchoring on a sand or mud bottom, you can lower the keel to stop the yacht from swinging around.

## Construction

---

*RCD Status: The yacht conforms with the essential safety requirements of Directive 94/25EC (Recreational Craft Directive) and is categorised A – “Ocean”*

### *Hull Construction:*

- Heavy duty GRP moulding, hand laid up to North Shore's Nordseal laminate system, incorporating multi-axial and unidirectional reinforcements. Sandwich construction stiffening runs the entire length of the hull topsides.
- All main bulkheads are bonded into the hull at main lay-up stage along with a stiffening

grillage of transverse frames and longitudinal stringers.

- Hull Colour: Oxford blue.
- Twin Style Stripes: Ivory white (white and red SS logo).
- Copper coating applied to below the waterline of hull, and keel.
- Name on transom in vinyl (positioned centrally on transom door).
- Name on port and starboard bow in vinyl.
- Stainless steel bow protector to stop the anchor chipping the gelcoat.

#### *Deck Construction:*

- Hand laid up GRP sandwich construction.
- Heavily stressed areas are additionally reinforced with uni-directional glass reinforcement.
- The deck is bonded to the hull through the entire length and to all main bulkheads resulting in a strong and integral unit.
- Deck Colour: Ivory white 9010.
- Boot Top Gel Coat: Ivory white and red.
- Teak laid decking to ring decks.

#### *Keel & Rudder:*

- Swing keel; the keel box is an integral part of the hull lay-up.
- Total ballast 5,230kg; 3,180kg fixed ballast & 2,050kg keel.
- The fixed ballast is an iron casting which acts as a grounding plate and as transverse stiffening for the keel unit.
- It is fitted into a recess in the hull, in the area of the keel box with stainless steel bolts.
- The aerofoil variable draft is cast iron and incorporates a stainless steel pivot at the leading edge.
- The variable draft is raised and lowered by hydraulic ram, powered by an electrically driven pump with a hand operated backup; keel control and gauge showing keel position fitted at wheel pedestal. Removable stainless steel pin, positioned to enable the keel to be locked in the 'up'

position.

- Hydraulics are easily accessible for maintenance.
- Semi-balanced twin rudders.

## Machinery

---

### *Engine & Gearboxes:*

- 1 x Yanmar 4JH5-E 56hp diesel engine. Engine Hours: 621.4 as of 06-01-15.
- The engine bearers are an integral part of the hull structure.
- Reduction/reverse gear.
- Sound deadening to engine box.
- Single lever engine control.

### *Propulsion & Steering:*

- Bow thruster, 97kg with control at steering pedestal.
- Twin TCE carbon wheels.
- Ambassador AM10 rope cutter on prop shaft.
- GRP stern tube with water lubricated stern gland.
- Bronze 3-bladed propeller.
- Emergency steering system.

## Electrical Systems

---

### *Voltage Systems:*

- 12v system.
- Empire bus system with 7 x power nodes distributed around the yacht.
- 240v ring main; includes 5 x double outlet sockets, earth leak circuit breaker and connection cable (with plug for shore connection) and 1kW immersion heater fitted in calorifier.



- Circuit breaker for 240v system on main panel.
- 12v 25amp socket fitted in cockpit (suitable for high load applications such as dinghy inflator) and sail locker.
- 12v interior socket (cigarette lighter type).

#### *Battery Banks:*

- 3 x Heavy duty batteries, charged from engine alternator; 1 x for engine, 2 x for domestic use.
- Isolating switches.

#### *Battery Chargers:*

- Mastervolt MICC Mass Combi 12/2000w – 100A inverter/charger.

#### *Alternators:*

- 80 amp alternator.

#### *Generator:*

- 240v 6kW – with ship/shore changeover switch.

#### *Shore Power:*

- Variety of adapters and a cross over cable for shore power with reverse polarity.

#### *Other Electrical:*

- Mastervolt MICC panel allowing for monitoring of power consumption and checking the state of the batteries.

---

## **Plumbing Systems**

---

### *Fresh Water & Water Heating System:*

- 1kW immersion heater fitted in calorifier.
- Chrome freshwater hand pump fitted at galley sink.
- Hot and cold pressurized water system.

### *Bilge Pumps:*

- 4 x Automatic bilge pumps.
- 1 x Manual bilge pump.

---

## **Tankage**

---

### *Fuel:*

- Total capacity of 410 litres; non metallic fuel tank with sediment trap and line filter.
- Bronze water inlet with removable filter gauze strainer.

### *Fresh water:*

- Total capacity of 545 litres.

### *Grey/Blackwater holding tanks:*

- 1 x Holding tank fitted under galley sole, heads pump to sea or into tank.

---

## **Navigation Equipment**

---

- Raymarine LifeTag system linked to plotter via Seataalk network. Includes 6 x Lifetags in total.
- Raymarine Nav Pac: 2 x ST60 wind displays, including long arm transducer, 2 x ST60 graphic displays mounted at pedestal with Tridata at chart table.
- Navpod and stainless steel grab rail, over companionway (suitable for 3 x instruments).
- Raymarine autopilot with Lewmar rotary sprocket drive, ST6002+ displays in cockpit and at

chart table, SPX30 smart pilot with rate gyro.

- Raymarine Smart controller wireless remote for autopilot; charging lead and bracket, fitted at chart table.
- Ray218E VHF radio with DSC function including aerial & flushmount kit.
- External hailer horn speaker for Ray218E VHF radio.
- RayMic 2<sup>nd</sup> station hand mic for VHF radio in cockpit (for Ray55E or Ray218E).
- Raymarine AIS500 receiver and transponder for collision avoidance information; including cables.
- Navpod fitted to pedestal to suit Raymarine C90W display; including cranked rails.
- Raymarine C120W at the chart table.
- Raymarine C90W multi-function display with basic Navionics card (UK & N Europe) and built in antenna; at the port wheel.
- Connection cabling for 2<sup>nd</sup> C series display.
- Raystar 125 satellite differential mount to coachroof.
- Small navpod fitted to pedestal for 2 x instruments, mounted on cranked rails.
- Raymarine 18" scanner complete with scanstrut mast bracket, including cable.
- 6" main steering compasses.

## Domestic Equipment

---

### *Galley:*

- Front loading stainless steel refrigerator (100 litres).
- Top loading freezer (40 litres).
- Extra 80 litre fridge/freezer under the chart table seat.
- Fully gimballed gas cooker with 3 x burners, grill and oven (fail-safe devices on all burners).
- Gas cut off tap.
- Twin stainless steel sinks.
- Gas alarm.

*Heads/Showers:*

- Deck shower with hot & cold water fitted in cockpit.
- 1 x Tecma electric WC fitted in forward heads compartment; plumbed to main holding tank.
- 1 x Marine WC; plumbed to main holding tank.

*Heating & Ventilation:*

- 4 x Hella Turbo 12v electric fan.
- Reverse cycle 10000 BTU air conditioning unit fitted in forward cabin, including cabin control with remote.
- Reverse cycle 16000 BTU air conditioning unit fitted in saloon area inc. cabin control with remote.

*Entertainment:*

- Radio/CD/Mp3 stereo system with 2 x speakers (iPod compatible).
- Waterproof cockpit speakers for radio/CD/MP3 stereo system.
- Remote control, mounted in cockpit, for radio/CD/MP3 stereo system.
- Glomex TV antenna at mainmast head – 1 x outlet.

*Lighting:*

- Low level cockpit lighting; 6 x LED lights.
- Cockpit lighting in boom.
- Full navigation light system incorporating bow lights, stern light, masthead tri-colour light with all round white anchor light, deck floor light and steaming light.

## **Accommodation**

---

*Summary of Accommodation:*

- 3 x Cabin layout.
- Headboard to forward cabin.
- Curtains in white.
- Maple joinery, with walnut trim added to specific areas.
- Corian type worktop in galley; Staron – Zenith (FZ184).
- Corian type worktop in heads compartments; Staron – Pebble Blue (PB870).
- Concertina blinds fitted in raised coachroof area.
- 2 x Roller shade/screens to hatches in forward cabin.
- Hinged access door to top of compression post on starboard side.

#### *Windows, Hatches & Ventilators.:*

- 10 x Opening deck hatches, 2 x size 54's, over forecabin, 1 x over saloon and 1 x over galley, 1 x to each aft cabin (access to cockpit), 4 x size 03's over forward heads, office/study area, chart table and day heads.
- Glazed opening ports in aft cabin coamings port and starboard.
- 4 x Dorade ventilators on deck, serving forward cabin, en-suite shower, galley and saloon.
- Perspex main companionway hatch.
- Pilot house windows and hull ports are partially reflective toughened glass, bonded into recesses in GRP mouldings laminate.

#### *Description of layout from forwards:*

##### *Master Cabin:*

- Large double centerline berth.
- Large hanging locker.
- Large shelved locker.
- Shelves.

- Fixed portlights.
- 3 x Opening hatches.
- Ventilation.
- Curtains.
- Door to en-suite facilities.

*En-suite Heads Compartment:*

- 1 x Tecma electric WC fitted in forward heads compartment; plumbed to main holding tank.
- Washbasin with Corian type surround.
- Separate shower with Perspex door.
- Grating to shower tray.
- Electric shower pump.
- Opening hatch.
- Lockers.
- Mirror.
- Glass holder.
- Ventilation.
- Fixed portlight.

*Galley:*

- Ample storage for crockery and cutlery.
- Cupboards.
- Opening hatch.
- Ventilation.
- Stainless steel grab rail.
- Wine rack.

*Raised Saloon:*

- Raised seating for 6 x people.
- Extending leaf table.
- Stowage.
- Bookshelf.
- Opening hatch.
- Concertina blinds to pilot house windows.
- Ventilation.

*Navigation Area:*

- Navigator's seat.
- Instrument console forward of chart table.
- Chart stowage.
- Locker spaces.
- Opening hatch over panel.
- Chart light.
- Main switch panel.

*Day Heads:*

- Marine WC.
- Washbasin with Corian type surround.
- Hot and cold pressurized water.
- Shower.
- Electric shower pump.
- Shower grating.

- Lockers.
- Oilskin stowage.
- Mirror.
- Glass holder.
- Fixed portlight.
- Opening hatch.

#### *Port Aft Cabin:*

- Large double/2 x single berths.
- Shelved locker.
- Hanging locker.
- Shelves.
- Escape hatch.
- Fixed portlight.
- Curtains.

#### *Starboard Aft Cabin:*

- Large double/2 x single berths.
- Shelved locker.
- Hanging locker.
- Shelves.
- Escape hatch.
- Fixed portlight.
- Curtains.

---

## **Deck Equipment**

---



*Rig:*

- Selden in-mast furling (linear driver) with full vertically battened mainsail.
- Deck stepped mast.
- Spinnaker/gennaker halyard & masthead block.
- Spinnaker/gennaker stainless steel attachments.
- Double swept back spreaders.
- Selden anodized aluminium spars.
- Stainless steel wire rigging.
- Twin Furlex headsail reefing system.
- Solid kicker, with gas support.
- Topping lift led aft.
- Kicker, jib sheet and 2 x reefs lead aft.
- Jib halyards at mast.
- Burgee and signal halyards.
- Hydraulic integrated backstay adjuster.
- Main halyard is at the mast.

*Winches:*

- Lewmar 54ST main sheet winches.
- Lewmar 54AEST powered main sheet winch, fitted to port side.
- Starboard winch beside the companionway is powered.

*Sails (North Sails):*

- Mainsail – Dacron, fully vertically battened, in-mast reefing.
- Furling self tacking jib – Dacron.
- Overlapping genoa – Dacron.

- UV stripes on sails in navy blue to match dark blue of sprayhood.

#### *General:*

- Ensign & staff.
- Gas bottle.
- Stainless steel removable bowsprit.
- 3 x Climbing steps on the mast – Selden factory fitted.
- Teak cockpit table with stainless steel grab rail and fold down leaves.

#### *Anchoring & Mooring Equipment:*

- 6 x Standard fenders, 2 x large spherical fenders, 2 x large normal fenders, 2 x cylinder fenders and 2 x flat fenders.
- 4 x Warps.
- Boat hook.
- Lewmar V3 windlass, with gypsy; additional windlass control on steering pedestal.
- 60 metre anchor chain with markers every 5 metres.
- Custom gang plank that can be mounted at the stern or the bow.

#### *Covers, Canvas & Cushions:*

- 2 x Wheel covers.
- Sprayhood; hide covered grab bar added.
- Custom bimini; standard bimini with sides, front and back panels to form cockpit tent enclosure. Panels detachable by zips – roll away. All support bars and frames in stainless steel.

#### *Tender & Outboard:*

- Teak pad for outboard engine stowage fitted to pushpit.

*Safety Equipment:*

- Radar reflector fitted on the mast.
- 6-man Ocean canister liferaft; universal liferaft stowage cradle.
- Harness lifeline jackstays port & starboard (tape).
- EPIRB.

*Fire-fighting equipment:*

- 4 x Regular fire extinguishers.
- 1 x Powder fire extinguisher for the engine compartment.
- 1 x Fire blanket.
- 1 x Smoke alarm.

## Исключения

---

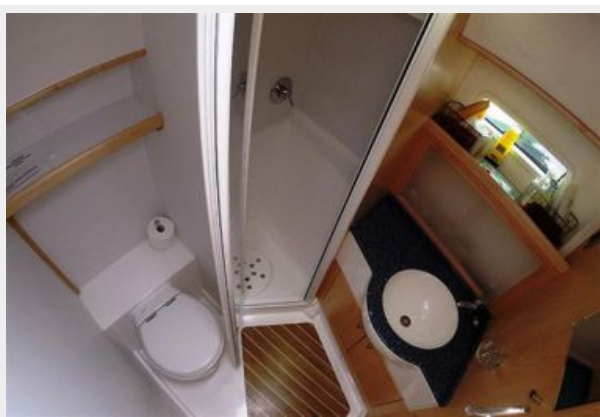
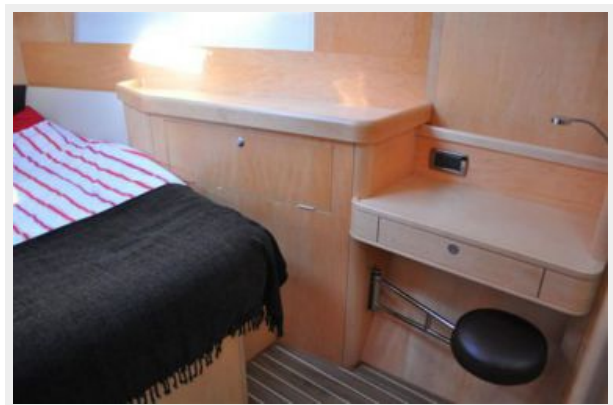
При продаже яхты исключаются личные вещи владельца.

## Отказ от ответственности

---

Компания предоставляет описание судна или яхты добросовестно, но не может гарантировать точность этой информации, а также не ручается за техническое состояние. Покупатель должен проинструктировать своих агентов или оценщиков исследовать представленную информацию более подробно, по собственному желанию. Продажа судна или яхты, изменение цены или снятие с продажи будет происходить без предварительного уведомления.

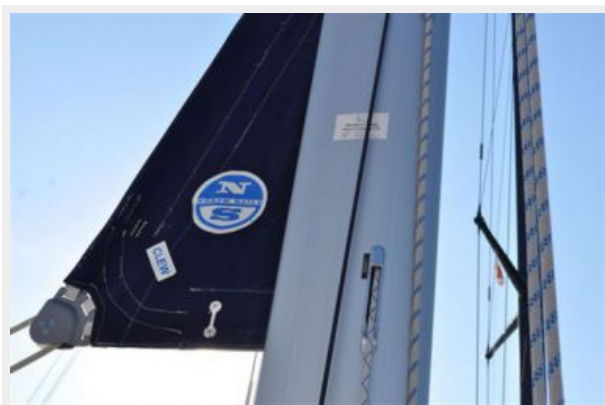
# ФОТОГРАФИИ







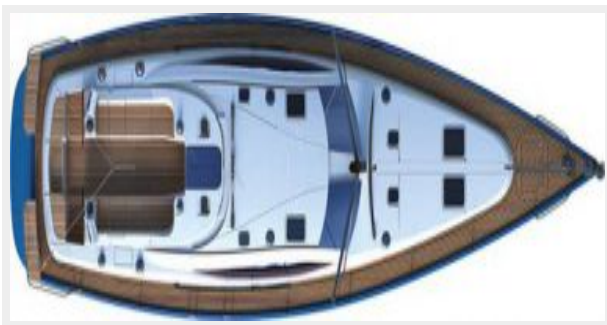
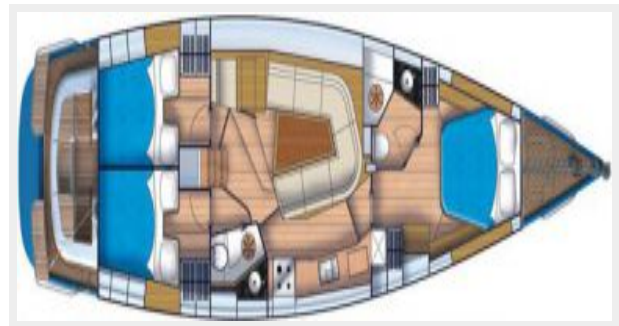












# КОНТАКТЫ

---

Андрей Шестаков (Andrey Shestakov) – ведущий яхтенный брокер отдела продаж яхт и судов компании Shestakov Yacht Sales Inc. Официальный представитель Shestakov Yacht Sales Inc. для русскоговорящих клиентов в центральном офисе компании в Майами/Форт Лодердейл/Флорида/США.

## Контактная информация

---

Email: [andrey@shestakovyachtsales.com](mailto:andrey@shestakovyachtsales.com)

Web: [shestakovyachtsales.com](http://shestakovyachtsales.com)

## Телефоны

---

Краснодарский край: **+7(918)465-66-44**

США, Майами, Флорида: **+1(954)274-4435**

## Время работы

---

Понедельник – Суббота: **9:00 - 21:00**  
EDT

Воскресенье: **Закрито**

## Адрес

---



Harbour Towne Marina, 850 NE 3rd St,  
STE 213, Dania, FL 33004