

TRIBUTE — FARR YACHT DESIGN



Судостроитель: FARR YACHT DESIGN

Год постройки: 1985

Модель: Крейсерская яхта

Цена: **ЦЕНА ЯХТЫ ПО ЗАПРОСУ**

Местонахождение: United States

Длина общая: 58' 0" (17.68m)

Ширина: 14' 5" (4.39m)

Макс. осадка: 8' 5" (2.57m)

Крейс. скорость: 7 Kts. (8 MPH)

Макс. скорость: 12 Kts. (14 MPH)

Купить Tribute — FARR YACHT DESIGN а также выбрать подходящую вам яхту из нашего каталога яхт вам поможет опытный яхтенный брокер Андрей Шестаков. На сегодняшний день компания Shestakov Yacht Sales Inc. имеет большое количество яхт в собственном списке продаж, а также тесно сотрудничает со всеми крупными яхтенными производителями по всему миру.

Для того чтобы купить яхту Tribute — FARR YACHT DESIGN а также проконсультироваться по любому вопросу связанному с покупкой, продажей, чартером яхт позвоните по телефону **+7(918)465-66-44**.

ОГЛАВЛЕНИЕ

ОГЛАВЛЕНИЕ	2
ХАРАКТЕРИСТИКИ	5
Обзор	5
Основная информация	5
Размеры	5
Скорость, вместимость и масса	5
Размещение	6
Корпус и палуба	6
Информация о двигателе	6
ПОДРОБНОЕ ОПИСАНИЕ	7
58' Farr Custom Overview	7
58' Farr Custom Electronics & Navigation	7
58' Farr Custom Electrical & Mechanical	7
58' Farr Custom Deck Equipment	8
58' Farr Custom Galley	9
58' Farr Custom Accommodations	9
58' Farr Custom Sail Inventory	10
58' Farr Custom Disclaimer	10
Исключения	10
Отказ от ответственности	10
ФОТОГРАФИИ	11
58' Farr Custom Island Time	11
58' Farr Custom Port Stern	11
58' Farr Custom Side profile dingy storage	11
58' Farr Custom Windlass	11
58' Farr Custom Raft	11
58' Farr Custom Cockpit looking fwd	11
58' Farr Custom Looking fwd to port	12

58' Farr Custom looking fwd to stb	12
58' Farr Custom Salon	12
58' Farr Custom Settee table closed	12
58' Farr Custom Settee table open	12
58' Farr Custom Love seat	12
58' Farr Custom TV	13
58' Farr Custom Nav Station	13
58' Farr Custom Love seat storage	13
58' Farr Custom Work Bench Area	13
58' Farr Custom Solar panels	13
58' Farr Custom looking aft to stb	13
58' Farr Custom Galley	14
58' Farr Custom Refrigerator/Freezer	14
58' Farr Custom Galley	14
58' Farr Custom Guest looking fwd	14
58' Farr Custom Guest stb side	14
58' Farr Custom Fwd crew area	14
58' Farr Custom Fwd toilet & sink	15
58' Farr Custom Master berth	15
58' Farr Custom Master looking fwd	15
58' Farr Custom Master head	15
58' Farr Custom Master head	15
58' Farr Custom Master shower	15
58' Farr Custom Washer/dryer	16
58' Farr Custom Charger/Inverter closet	16
58' Farr Custom Electric panel	16
58' Farr Custom Engine- stb side	16
58' Farr Custom Engine- stb side	16
58' Farr Custom Engine- port side	16

58' Farr Custom EPIRB/ LED overhead lighting	17
КОНТАКТЫ	18
Контактная информация	18
Телефоны	18
Время работы	18
Адрес	18

ХАРАКТЕРИСТИКИ

Обзор

'Tribute' is a pedigree design by famed designer Bruce Farr and was built to very high standards at Dencho Marine in Long Beach, CA. Her beautiful interior is by Naval Architect Bob Smith. She was commissioned by very knowledgeable sailboat racers with a dream to cruise around the World. The design called for the combination of speed and comfort and still be simply cruised by a couple. The roomy center cockpit provides for a large master stateroom with queen berth. She has plenty of storage for blue water cruising.

'Tribute' has proudly circumnavigated the globe and is now offered seriously for sale. Price reduced!

Основная информация

Тип судна: Крейсерская яхта

Модельный год: 1985

Год постройки: 1985

Страна: United States

Размеры

Длина общая: 58' 0" (17.68m)

Длина палубы: 52' 5" (15.98m)

Ширина: 14' 5" (4.39m)

Макс. осадка: 8' 5" (2.57m)

Трапы: 73' 0" (22.25m)

Скорость, вместимость и масса

Крейс. скорость: 7 Kts. (8 MPH)

Макс. скорость: 12 Kts. (14 MPH)

Водоизмещение: 29000 Pounds

Вместимость воды: 190 Gallons

Вместимость сточного бака: 30 Gallons

Объем топливного бака: 251 Gallons

Размещение

Всего кают: 2

Всего коек: 2

Спальные места: 4

Всего ком. состава: 2

Корпус и палуба

Материал корпуса: Fiberglass

Комплектация корпуса: Monohull

Информация о двигателе

Двигатели: 1

Производитель: Volvo

Тип двигателя: Inboard

Тип топлива: Diesel

ПОДРОБНОЕ ОПИСАНИЕ

58' Farr Custom Overview

'*Tribute*' is a pedigree design by famed designer Bruce Farr and was built to very high standards at Dencho Marine in Long Beach, CA. Her beautiful interior is by Naval Architect Bob Smith. She was commissioned by very knowledgeable sailboat racers with a dream to cruise around the World. The design called for the combination of speed and comfort and still be simply cruised by a couple. The roomy center cockpit provides for a large master stateroom with queen berth. She has plenty of storage for blue water cruising.

'*Tribute*' has proudly circumnavigated the globe and is now offered seriously for sale.

58' Farr Custom Electronics & Navigation

- Nav Station- swing out seat w/ backrest - Red & White LED lighting
- Samsung Navis 700 Chartplotter (2007)
- Simrad ISI5 multi function wind direction, flux compass, speed, depth, apparent wind, VMG, wind direction, wind speed
- Simrad RA41 36 mile radar
- Simrad CP-32 GPS
- Simrad speed log & sea temp
- Robertson autopilot (2007)
- Horizon Intrepid VHF
- ICOM SSB radio, Pactor system email and weather fax (2007)
- Ritchie Compass
- Searchlight
- ACR EPIRB
- Ships Bell
- Emergency Tiller w/ extension arm to Cockpit

58' Farr Custom Electrical & Mechanical

- Volvo 85hp Diesel w/ 5,000 hours (cruise 7 knots under power)
- Medalist Universal 5KW generator w/ 445 hours
- Heart Interface Freedom 25 Inverter w/ system monitor

- Heart Battery Charger
- (1) Trojan 6D starting battery , (1) Trojan Group 24 Deep Cycle Generator Battery
- (2) Lifeline AGM House Batteries
- Halon Fire Suppression System
- 30AMP Shore Power
- Sunpower Solar Panels 600 Watts Total (2007)
- Dripless Shaft Packing
- LED overhead cabin courtesy lighting
- Splendide Washer / Dryer
- Sprettra 15 gph watermaker (2007)
- Water filtration system
- Vice on work bench
- (2) In hatch air conditioners
- Diesel Hurricane Heating system w/ vents in salon, master, & guest . Also can be used to heat hot water (2007)

58' Farr Custom Deck Equipment

- (2) Barient 736 primary electric 4 speed self tailing winches, (2) Barient 32's , (2) Barient 28's
- North Sails Roller Furler
- All Standing rigging replaced (2005)
- Hydraulic Navtec tensioning of stays, boom vang
- Hard Dodger (strong enough to stand on)
- Bimini Top over cockpit
- Textaline window sun screens for all windows
- Smoked Lexan Cockpit Door w/ teak trim
- Viking Canister life raft (2007)
- Man Overboard gear
- 9' 6" AB Aluminum Bottom RIB w/ Nissan 9.8hp (2009)
- Bruce 30kg anchor, Bruce 20kg anchor, Danforth 18lb anchor
- 600' Anchor Chain
- Electric Anchor Windlass
- Saltwater washdown forward & aft
- Fresh water shower at swim platform
- Rod Holders & Fish cleaning station
- Stainless Arch (2007) w/ 600W solar panels, quartz deck light & overhead davits
- Cockpit seating for 8 - (cushions in very good condition)
- (2) propane tanks in deck locker / (1) spare tank
- Hull sides painted w/ alwgrip (2007)
- Replaced prop, prop shaft, & skeg (2007)
- New hull zincs (2013)

58' Farr Custom Galley

- Insulated top loading Freezer box
- Insulated top loading Refrigerator box
- Force 10 3-Burner Propane Stove & Oven
- Deep Stainless Steel Sink w/ sprayer handle & water filter
- Samsung Microwave
- Dinette in Salon w/ folding expandable table
- 110 gallon water tank & 80 gallon water tank under galley sole

58' Farr Custom Accommodations

Salon

- Settee w/ expandable folding table to port
- Love seat w/ storage beneath
- Teak & Holly sole throughout
- Fold down Sylvania TV on bracket
- DVD player
- Stereo CD w/ 3 zones- aft, salon, cockpit
- Through Hatch A/C w/ diesel heat
- 7' ceiling height
- Large fixed lexan portlights provide plenty of natural light
- Plenty of storage

Master Stateroom & Master Head

- Centerline queen berth
- Through Hatch A/C w/ diesel heat
- Storage below berth
- (2) hanging lockers & ample drawer space
- Full-Length Mirror
- (6) Opening portlights & large overhead hatch
- Safe
- Ensuite head w/ vanity & sink , toilet, and separate stall shower w/ seat
- Separate holding tank w/ macerator pump to overboard

Guest Stateroom & Guest Head

- Double berth
- Through Hatch A/C w/ diesel heat
- 6' headroom
- (2) opening portlights w/ overhead hatch in forward crew area
- Large hanging locker & ample drawer space

- Ensuite head w/ vanity & sink and toilet
- Separate holding tank w/ macerator in port locker
- Canvas crew storage bunk and line hanging racks
- Direct access to anchor chain

58' Farr Custom Sail Inventory

- Full batten Main Sail
- Two Genoa Sails
- Symmetrical Spinnaker
- Assymetrical Spinnaker
- Storm Trysail
- Stay Jib

58' Farr Custom Disclaimer

The Company offers the details of this vessel in good faith but cannot guarantee or warrant the accuracy of this information nor warrant the condition of the vessel. A buyer should instruct his agents, or his surveyors, to investigate such details as the buyer desires validated. This vessel is offered subject to prior sale, price change, or withdrawal without notice.

Исключения

При продаже яхты исключаются личные вещи владельца.

Отказ от ответственности

Компания предоставляет описание судна или яхты добросовестно, но не может гарантировать точность этой информации, а также не ручается за техническое состояние. Покупатель должен проинструктировать своих агентов или оценщиков исследовать представленную информацию более подробно, по собственному желанию. Продажа судна или яхты, изменение цены или снятие с продажи будет происходить без предварительного уведомления.

ФОТОГРАФИИ

58' Farr Custom Port Stern



58' Farr Custom Island Time



58' Farr Custom Side profile dingy storage



58' Farr Custom Windlass



58' Farr Custom Raft



58' Farr Custom Cockpit looking fwd



58' Farr Custom Looking fwd to port



58' Farr Custom looking fwd to stb



58' Farr Custom Salon



58' Farr Custom Settee table closed



58' Farr Custom Settee table open



58' Farr Custom Love seat



58' Farr Custom TV



58' Farr Custom Nav Station



58' Farr Custom Love seat storage



58' Farr Custom Work Bench Area



58' Farr Custom Solar panels



58' Farr Custom looking aft to stb



58' Farr Custom Galley



58' Farr Custom Refrigerator/Freezer



58' Farr Custom Galley



58' Farr Custom Guest looking fwd



58' Farr Custom Guest stb side



58' Farr Custom Fwd crew area



58' Farr Custom Fwd toilet & sink



58' Farr Custom Master berth



58' Farr Custom Master looking fwd



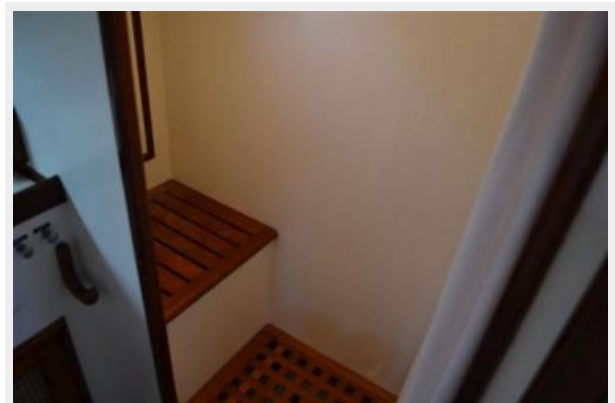
58' Farr Custom Master head



58' Farr Custom Master head



58' Farr Custom Master shower



58' Farr Custom Washer/dryer



58' Farr Custom Charger/Inverter closet



58' Farr Custom Electric panel



58' Farr Custom Engine- stb side



58' Farr Custom Engine- stb side



58' Farr Custom Engine- port side



58' Farr Custom EPIRB/ LED overhead lighting



КОНТАКТЫ

Андрей Шестаков (Andrey Shestakov) – ведущий яхтенный брокер отдела продаж яхт и судов компании Shestakov Yacht Sales Inc. Официальный представитель Shestakov Yacht Sales Inc. для русскоговорящих клиентов в центральном офисе компании в Майами/Форт Лодердейл/Флорида/США.

Контактная информация

Email: andrey@shestakovyachtsales.com

Web: shestakovyachtsales.com

Телефоны

Краснодарский край: **+7(918)465-66-44**

США, Майами, Флорида: **+1(954)274-4435**

Время работы

Понедельник – Суббота: **9:00 - 21:00**
EDT

Воскресенье: **Закрито**

Адрес



Harbour Towne Marina, 850 NE 3rd St,
STE 213, Dania, FL 33004