

## MAXIME — BRUNO ABBATE



**Builder:** [Bruno Abbate](#)

**Year Built:** 2008

**Model:** Cruiser

**Price:** PRICE ON APPLICATION

**Location:** Italy

**LOA:** 40' 9" (12.40m)

**Beam:** 13' 4" (4.06m)

**Min Draft:** 321' 7" (98.00m)

Our experienced yacht broker, Andrey Shestakov, will help you choose and buy a yacht that best suits your needs **MAXIME — Bruno Abbate** from our catalogue. Presently, at Shestakov Yacht Sales Inc., we have a wide variety of yachts available on our sale's list. We also work in close contact with all the big yacht manufacturers from all over the world.

If you would like to buy a yacht **MAXIME — Bruno Abbate** or would like help answering any questions concerning purchasing, selling or chartering a yacht, please call **+1(954)274-4435**

---

# TABLE OF CONTENTS

---

TABLE OF CONTENTS	2
SPECIFICATIONS	3
Overview	3
Basic Information	3
Dimensions	3
Speed, Capacities and Weight	3
Accommodations	3
Hull and Deck Information	3
Engine Information	4
DETAILED INFORMATION	5
Deck Equipment	5
Exclusions	5
Disclaimer	5
PHOTOS	6
CONTACTS	9
Contact details	9
Telephones	9
Office hours	9
Address	9

---

# SPECIFICATIONS

---

## Overview

---

VERY NICE CONDITION

## Basic Information

---

**Category:** Cruiser

**Sub Category:** Sport Cruiser

**Model Year:** 2008

**Year Built:** 2008

**Country:** Italy

**Vessel Top:** 2363

## Dimensions

---

**LOA:** 40' 9" (12.40m)

**Beam:** 13' 4" (4.06m)

**Min Draft:** 321' 7" (98.00m)

## Speed, Capacities and Weight

---

**Water Capacity:** 200 Gallons

**Fuel Capacity:** 850 Gallons

## Accommodations

---

**Total Cabins:** 2

**Sleeps:** 7

**Total Heads:** 2

## Hull and Deck Information

---

**Hull Material:** Fiberglass

**Hull Configuration:** Modified V-Hull

**Hull Color:** BLUE

**Hull Finish:** Inox

---

## Engine Information

---

**Engines:** 2

**Manufacturer:** Volvo Penta

**Model:** D6

**Engine Type:** I/O

**Fuel Type:** Diesel

---

# DETAILED INFORMATION

---

## Deck Equipment

---

**Electronics** VHF Radio TV set Depthsounder Autopilot Compass CD player GPS Log-speedometer DVD player Cockpit speakers Plotter **Inside Equipment** Manual bilge pump Electric bilge pump Refrigerator Hot water Battery charger Electric head Microwave oven Air conditioning Bow thruster **Electrical Equipment** Generator 4 kW Mase diesel 12/24/220 V Shore power inlet Electrical Circuit: 220V **Outside Equipment/Extras** Teak cockpit Radar reflector Swimming ladder Hydraulic gangway Cockpit shower Cockpit cushions Cockpit table Electric windlass

## Exclusions

---

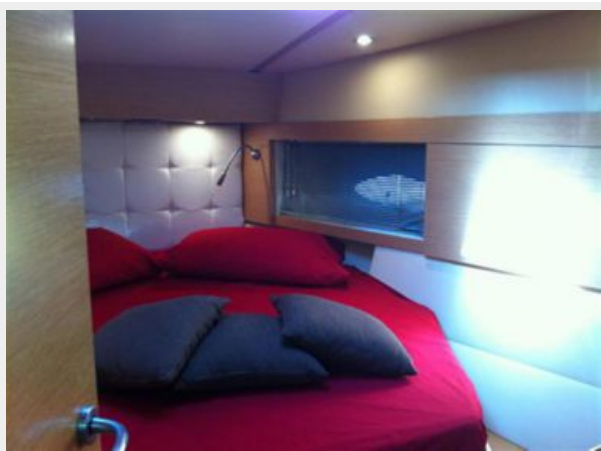
Owner's personal belongings.

## Disclaimer

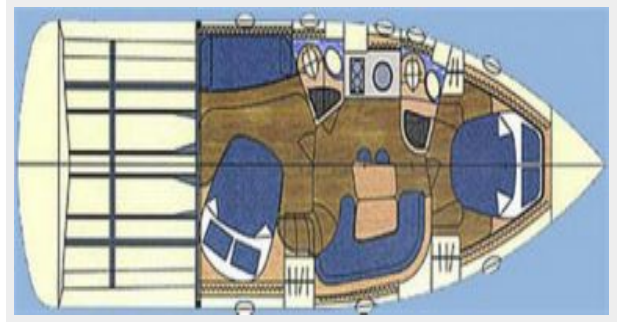
---

The Company offers the details of this vessel or yacht in good faith but cannot guarantee or warrant the accuracy of this information nor warrant the condition of the vessel. A buyer should instruct his representatives, agents, or his surveyors, to investigate such details as the buyer desires validated. This vessel or yacht is offered subject to prior sale, price change, or withdrawal without notice.

# PHOTOS









---

# CONTACTS

---

Andrey Shestakov, leading yacht broker of the sales department of Shestakov Yacht Sales Inc. Shestakov Yacht Sales Inc., the official representative of the Miami/Fort Lauderdale FL headquarters.

---

## Contact details

---

Email: [andrey@shestakovyachtsales.com](mailto:andrey@shestakovyachtsales.com)

Web: [shestakovyachtsales.com/en/](http://shestakovyachtsales.com/en/)

---

## Telephones

---

USA: +1(954)274-4435

---

## Office hours

---

Monday – Saturday: **9:00 - 21:00** EDT

Sunday: **closed**

---

## Address

---



Harbour Towne Marina, 850 NE 3rd St,  
STE 213, Dania, FL 33004