

PERLE NOIRE — HEESEN YACHTS



Builder: HEESEN YACHTS

Year Built: 2010

Model: Motor Yacht

Price: PRICE ON APPLICATION

Location: Italy

LOA: 122' 5" (37.30m)

Beam: 23' 3" (7.08m)

Max Draft: 9' 1" (2.76m)

Cruise Speed: 22 Kts. (25 MPH)

Max Speed: 31 Kts. (36 MPH)

Our experienced yacht broker, Andrey Shestakov, will help you choose and buy a yacht that best suits your needs **Perle Noire — HEESEN YACHTS** from our catalogue. Presently, at Shestakov Yacht Sales Inc., we have a wide variety of yachts available on our sale's list. We also work in close contact with all the big yacht manufacturers from all over the world.

If you would like to buy a yacht **Perle Noire — HEESEN YACHTS** or would like help answering any questions concerning purchasing, selling or chartering a yacht, please call **+1(954)274-4435**

TABLE OF CONTENTS

TABLE OF CONTENTS	2
SPECIFICATIONS	3
Overview	3
Basic Information	4
Dimensions	4
Speed, Capacities and Weight	4
Accommodations	5
Hull and Deck Information	5
Engine Information	5
DETAILED INFORMATION	6
Detailed Information	6
Exclusions	7
Disclaimer	7
PHOTOS	8
CONTACTS	18
Contact details	18
Telephones	18
Office hours	18
Address	18

SPECIFICATIONS

Overview

TECHNICAL EQUIPMENT • 2 MTU 16V 4000 M90 Application: fast vessels 2.720 kW (3650HP) @ 2100 rpm, engines have a fresh water cooling systems. (1650 / 1650 hrs) • 2 free standing marine reverse-reduction gearbox; ZF, model BW 7550 P (PTO axial, vertically off-set); Propulsion type: TWO five blade Nibral propellers • 2 Kilopack marine diesel generator sets, each 50kW (7766/7765 hrs) • Bowthruster / sternthruster Hydromar type HBT-GF-CR-50/ HBT-GP-CR5 1 **Cooling water system** • Bilge and fire fighting system • Fresh water system • Two R.O. desalination systems type H.E.M. 20/400. Capacity 1 .500 lpd each **Air conditioning** • Engine room ventilation • Accomodation Fresh air supply • Heating system • Shore connections and power supply **NAVIGATION & COMMUNICATION EQUIPMENT** • Radar, make Furuno, type FAR-2 1 1 7 • Flat screen monitor 8,4” sunlight readable, Radio Zeeland, type FSM 8.4 SUN • DGPS System Saab R4 • Automatic Identification System Saab R4 • CHART SYSTEM • GYRO – AUTOPILOT • MAGNETIC COMPASS • WIND - SPEED – DEPTH • VHF WITH DSC radio • Sailor inmarsat-c system, type H-2095C • navtex receiver type NX-700 • Inmarsat F, Nera, type F55, Printer **Dashboard Wheelhouse** • 2 x 1 5” touch screen panel • Horn push button 24Vdc • Muster alarm push button • Controls window demisting • 5 x Window wiper/washer 24 VDC • Control panel search light 24 VDC • Bow thruster joystick • Stem thruster joystick • Buzzer steering pumps • Emergency stop fuel/ventilation with indication light • NFU tiller autopilot • MTU instruments **SAFETY EQUIPMENT** • 4 ten persons life rafts in fiberglass container in GRP chocks, with automatic signally quick release, on boat deck as per plan. Make Zodiac • 1 Man overboard rescue sling • 2 life saving rings in stainless steel brackets with 1 karos light, and smoke signal USCG approved • 2 life saving rings with lines and light in stainless steel brackets, USCG approved • Twenty (20) adult and six (6) children inflatable life jackets, all with light • 2 firemans outfit complete with MCA approved breathing apparatus • 1 EPIRB A.C.R and two (2) SART • Sun awning at the flybridge • Fire detection system • Diagnostic alarm system **COMMUNICATION EQUIPMENT** • Telephone intercom system • Camera system • LAN (local area network) system for common use • Engine Controls • Main engines and gearboxes controlled from wheelhouse and flybridge with MTU electronic controls. • Programmable Logic Controller • Supervisory Control And Data Acquisition • Central antenna system (CAS) • Antenna for FMI AM/TV, make Naval type mark 22CA • Amplifier including a switch for slrip’s antenna I shore connection. **ENTERTAINMENT EQUIPMENT Flybridge** • 6 pieces waterproof Sony XS MP 6 1 MK2 speakers, Sunbed on frontdeck (mounted in front locker) **Salon** • 2x pieces waterproof Sony XS MP 6 1 MK2 speakers • 1x Pioneer Plasma TV PDP 506 XDE incl. Tuner • 1x Bose Lifestyle 38 Included subwoofer & 5 speakers, DVD player and Dolby Digital **Dining** • 2x pieces Kef CI 1 30FS speakers **Maindeck aft.** • 2x pieces waterproof Sony XS MP 6 1 MK2 speakers **Owner Stateroom** • Pioneer Plasma TV PDP 506 XDE incl. Tuner • Bose Lifestyle 1 8 incl. subwoofer & 5 surround speakers and DVD player. **Guest room (4x)** • 4x Sharp 20” LCD LC-20shle • 4x Pioneer DVD player SDV P7 • 4x Pioneer receiver DEH P 80 MP • 8x Pieces Pioneer speakers TSE 1 376 **Crew mess** • TV, Pioneer DVD player SDV P7 • Pioneer receiver DEH P 80 MP • 2x Pieces Pioneer speakers TSE 1 3 76 **Forward crew cabins (2x)** • 2x Sharp

20" LCD LC-20shl e, 2 Pioneer DVD player SDV P7 • 2x Pioneer receiver DEH P 80 MP • 4x Pieces Pioneer speakers TSE 1 376 **Wheelhouse** • Pioneer receiver DEH P 80 MP • 2x Pieces Pioneer speakers TSE 1 376 • Satellite TV system type Sea tel 2498 (60cm dish) 220V, With in total 3 Topfield Digital Satellite receivers **HOUSEHOLD EQUIPMENT Galley:** 2 Refrigerators, Ice-maker, 2 Ovens, Microwave, Cooktop 4 zones, Exhaust, Dishwasher **Flybridge:** Ice-maker, Refrigerator, Tepan yaki, **Tender Garage:** Washer, Dryer, Freezer **ADDITIONAL EQUIPMENT Jacuzzi:** At the sun deck the yard - a Jacuzzi type Hilton Spa Martinique, capacity of approximately 1 .400 litres and 4 persons with a dacron cover. **Passarelle:** Aluminium electric/hydraulic operated telescopic passarelle in the starboardside of the stern Hydromar. **Swimming ladder**

Basic Information

Category: Motor Yacht

Sub Category: Semi-Displacement

Model Year: 2010

Year Built: 2010

Country: Italy

Fly Bridge: Yes

Cockpit: Yes

Dimensions

LOA: 122' 5" (37.30m)

Beam: 23' 3" (7.08m)

Max Draft: 9' 1" (2.76m)

Speed, Capacities and Weight

Cruise Speed: 22 Kts. (25 MPH)

Cruise Speed Range: 3500

Max Speed: 31 Kts. (36 MPH)

Max Speed RPM: 2100 Kts.

Max Speed Range: 800 Kts.

Displacement: 330693.393 Pounds

Gross Tonnage: 245 Pounds

Water Capacity: 2113.376416 Gallons

Holding Tank: 792.516156 Gallons

Fuel Capacity: 9257.645390288 Gallons

Accommodations

Total Cabins: 5

Total Berths: 8

Sleeps: 12

Total Heads: 6

Captain Cabin: True

Crew Cabin: 3

Crew Berths: 6

Crew Sleeps: 6

Crew Heads: 3

Hull and Deck Information

Hull Material: Aluminum

Deck Material: Teak

Hull Configuration: Semi-Displacement

Hull Color: Black, White superstructure

Exterior Designer: Frank Laupman

Interior Designer: Gabriel Bernardi

Engine Information

Engines: 2

Manufacturer: MTU

Model: 16V 4000 M90

Engine Type: Inboard

Fuel Type: Diesel

DETAILED INFORMATION

Detailed Information

TECHNICAL EQUIPMENT • 2 MTU 16V 4000 M90 Application: fast vessels 2.720 kW (3650HP) @ 2100 rpm, engines have a fresh water cooling systems. (1650 / 1650 hrs) • 2 free standing marine reverse-reduction gearbox; ZF, model BW 7550 P (PTO axial, vertically off-set); Propulsion type: TWO five blade Nibral propellers • 2 Kilopack marine diesel generator sets, each 50kW (7766 / 7765 hrs) • Bowthruster / sternthruster Hydromar type HBT-GF-CR-50/ HBT-GP-CR5 1 **Cooling water system** • Bilge and fire fighting system • Fresh water system • Two R.O. desalination systems type H.E.M. 20/400. Capacity 1 .500 lpd each **Air conditioning** • Engine room ventilation • Accomodation Fresh air supply • Heating system • Shore connections and power supply **NAVIGATION & COMMUNICATION EQUIPMENT** • Radar, make Furuno, type FAR-2 1 1 7 • Flat screen monitor 8,4" sunlight readable, Radio Zeeland, type FSM 8.4 SUN • DGPS System Saab R4 • Automatic Identification System Saab R4 • **CHART SYSTEM** • GYRO – AUTOPILOT • **MAGNETIC COMPASS** • WIND - SPEED – DEPTH • VHF WITH DSC radio • Sailor inmarsat-c system, type H-2095C • navtex receiver type NX-700 • Inmarsat F, Nera, type F55, Printer **Dashboard Wheelhouse** • 2 x 1 5" touch screen panel • Horn push button 24Vdc • Muster alarm push button • Controls window demisting • 5 x Window wiper/washer 24 VDC • Control panel search light 24 VDC • Bow thruster joystick • Stem thruster joystick • Buzzer steering pumps • Emergency stop fuel/ventilation with indication light • NFU tiller autopilot • MTU instruments **SAFETY EQUIPMENT** • 4 ten persons life rafts in fiberglass container in GRP chocks, with automatic signally quick release, on boat deck as per plan. Make Zodiac • 1 Man overboard rescue sling • 2 life saving rings in stainless steel brackets with 1 karos light, and smoke signal USCG approved • 2 life saving rings with lines and light in stainless steel brackets, USCG approved • Twenty (20) adult and six (6) children inflatable life jackets, all with light • 2 firemans outfit complete with MCA approved breathing apparatus • 1 EPIRB A.C.R and two (2) SART • Sun awning at the flybridge • Fire detection system • Diagnostic alarm system **COMMUNICATION EQUIPMENT** • Telephone intercom system • Camera system • LAN (local area network) system for common use • Engine Controls • Main engines and gearboxes controlled from wheelhouse and flybridge with MTU electronic controls. • Programmable Logic Controller • Supervisory Control And Data Acquisition • Central antenna system (CAS) • Antenna for FMI AM/TV, make Naval type mark 22CA • Amplifier including a switch for slrip's antenna I shore connection. **ENTERTAINMENT EQUIPMENT Flybridge** • 6 pieces waterproof Sony XS MP 6 1 MK2 speakers, Sunbed on frontdeck (mounted in front locker) **Salon** • 2x pieces waterproof Sony XS MP 6 1 MK2 speakers • 1x Pioneer Plasma TV PDP 506 XDE incl. Tuner • 1x Bose Lifestyle 38 Included subwoofer & 5 speakers, DVD player and Dolby Digital **Dining** • 2x pieces Kef CI 1 30FS speakers **Maindeck aft.** • 2x pieces waterproof Sony XS MP 6 1 MK2 speakers **Owner Stateroom** • Pioneer Plasma TV PDP 506 XDE incl. Tuner • Bose Lifestyle 1 8 incl. subwoofer & 5 surround speakers and DVD player. **Guest room (4x)** • 4x Sharp 20" LCD LC-20shle • 4x Pioneer DVD player SDV P7 • 4x Pioneer receiver DEH P 80 MP • 8x Pieces Pioneer speakers TSE 1 376 **Crew mess** • TV, Pioneer DVD player SDV P7 • Pioneer receiver DEH P 80 MP • 2x Pieces Pioneer speakers TSE 1 3 76 **Forward crew cabins (2x)** • 2x Sharp

20" LCD LC-20shl e, 2 Pioneer DVD player SDV P7 • 2x Pioneer receiver DEH P 80 MP • 4x Pieces Pioneer speakers TSE 1 376 **Wheelhouse** • Pioneer receiver DEH P 80 MP • 2x Pieces Pioneer speakers TSE 1 376 • Satellite TV system type Sea tel 2498 (60cm dish) 220V, With in total 3 Topfield Digital Satellite receivers **HOUSEHOLD EQUIPMENT Galley:** 2 Refrigerators, Ice-maker, 2 Ovens, Microwave, Cooktop 4 zones, Exhaust, Dishwasher **Flybridge:** Ice-maker, Refrigerator, Tepan yaki, **Tender Garage:** Washer, Dryer, Freezer **ADDITIONAL EQUIPMENT Jacuzzi:** At the sun deck the yard - a Jacuzzi type Hilton Spa Martinique, capacity of approximately 1 .400 litres and 4 persons with a dacron cover. **Passarelle:** Aluminium electric/hydraulic operated telescopic passarelle in the starboardside of the stern Hydromar. **Swimming ladder**

Exclusions

Owner's personal belongings.

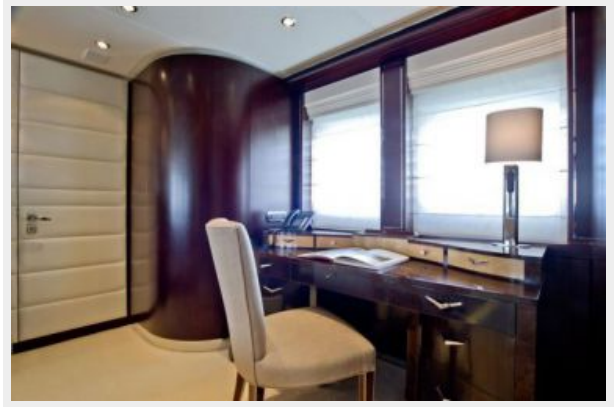
Disclaimer

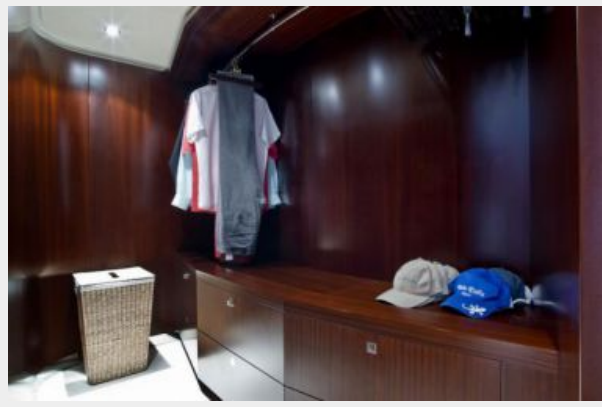
The Company offers the details of this vessel or yacht in good faith but cannot guarantee or warrant the accuracy of this information nor warrant the condition of the vessel. A buyer should instruct his representatives, agents, or his surveyors, to investigate such details as the buyer desires validated. This vessel or yacht is offered subject to prior sale, price change, or withdrawal without notice.

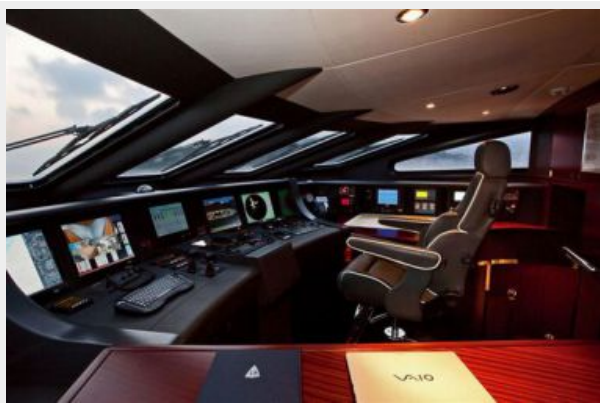
PHOTOS

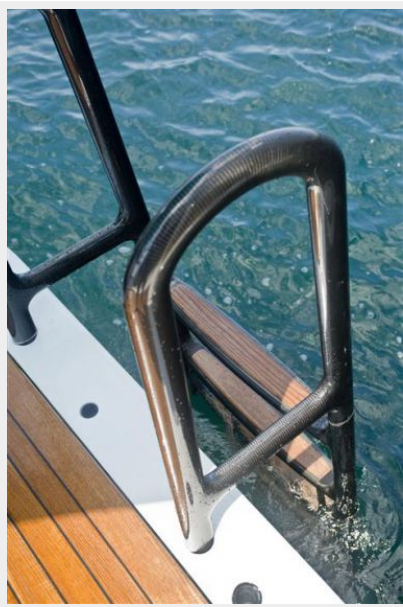




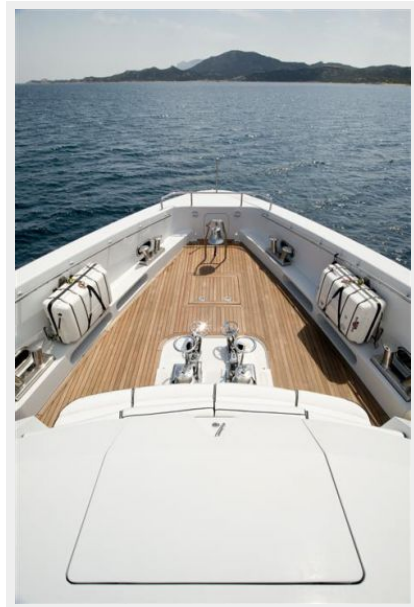


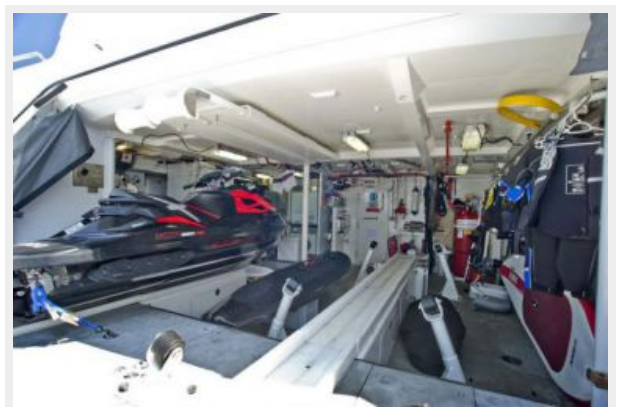
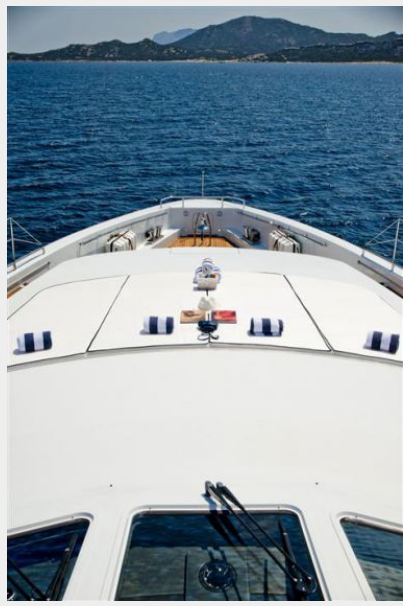


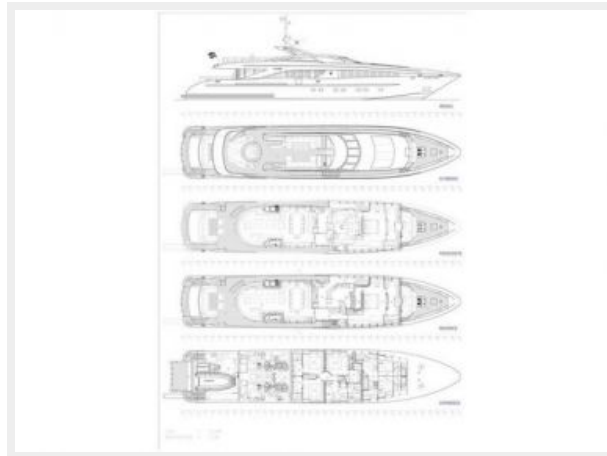












CONTACTS

Andrey Shestakov, leading yacht broker of the sales department of Shestakov Yacht Sales Inc. Shestakov Yacht Sales Inc., the official representative of the Miami/Fort Lauderdale FL headquarters.

Contact details

Email: andrey@shestakovyachtsales.com

Web: shestakovyachtsales.com/en/

Telephones

USA: +1(954)274-4435

Office hours

Monday – Saturday: **9:00 - 21:00** EDT

Sunday: **closed**

Address



Harbour Towne Marina, 850 NE 3rd St,
STE 213, Dania, FL 33004