

SAINT MARIE



Year Built: 2002

Model: Cruising Yacht

Price: PRICE ON APPLICATION

LOA: 38' (11.58mm)

Beam: 13

Max Draft: 3' 3" (0.99mm)

Cruise Speed: 20 Knots Kts. (23 MPH)

Max Speed: 30 Knots Kts. (35 MPH)

Our experienced yacht broker, Andrey Shestakov, will help you choose and buy a yacht that best suits your needs **SAINT MARIE** — n/a from our catalogue. Presently, at Shestakov Yacht Sales Inc., we have a wide variety of yachts available on our sale's list. We also work in close contact with all the big yacht manufacturers from all over the world.

If you would like to buy a yacht **SAINT MARIE** — n/a or would like help answering any questions concerning purchasing, selling or chartering a yacht, please call **+1(954)274-4435**

TABLE OF CONTENTS

TABLE OF CONTENTS	2
SPECIFICATIONS	5
Basic Information	5
Dimensions	5
Speed, Capacities and Weight	5
Accommodations	5
Hull and Deck Information	5
Engine Information	6
PHOTOS	7
Aft Port View	7
Manufacturer Provided Image	7
Transom View W/Huge Extended Swim Platform	7
Aft Starboard View	7
Salon Looking Forward	8
Master Stateroom Looking Forward	8
Master Head W/Vacuflush Toilet, Shower, & Sink	8
Master Stateroom Looking Aft W/Flatscreen TV	8
Enclosed Walk-In Shower	9
Large Vanity W/Sink	9
Aft Double Berth That Easily Coverts To Two Single Berths	9
Aft Berth W/Flatscreen TV	9
Aft Stateroom Vanity W/Sink	10
Aft Head W/Shower & Vacuflush Toilet	10
Fusion Stereo	10
Insignia Flatscreen TV & Full Galley	10
Convertible Settee To Starboard	10
Salon Looking Aft	10
Origo Microwave	11

Helm/Navigation Station	11
Raymarine C80 Plotter/Sounder/Radar	11
Interphase Forward Scanning Radar	11
Raymarine ST6002 Autopilot	11
Westmarine 550 VHF Marine Radio	11
Radar Arch W/Tracvision Satellite, Shakespeare SeaWatch Marine TV Antenna, GPS Antenna, Satellite Weather Antenna, Raymarine Closed Array Radar	12
AC/DC Electrical Panel	12
Charles Marine 60 Amp Battery Charger	12
Kohler Generator	12
Battery Bank	12
Shorepower Connections At Transom	12
Accessory Switch Panel	13
Instrument Panel & Danforth Compass	13
Double Helm Seats W/Flip-Up Bolsters	13
Walk-In Engine Room W/Electric Hatch	13
Engine Compartment	13
Port Engine	13
Engine Firewall W/Battery Charger, Main Breaker Panel, & Fire Supression	14
Starboard Engine	14
Spacious Cockpit W/Lots Of Seating	14
Cockpit Looking Forward	14
Port Wrap-Around Seating W/Table	14
Aft Seating	14
Cockpit Wet-Bar	15
Slide-Out Cooler	15
Bow Looking Forward W/Large Sunpad	15
Bow Looking Aft	15
Lofrans Electric Windless Anchor & Locker W/Washdown	15

Remote Operated Spotlight	15
Large Transom Storage Locker	16
Hot & Cold Freshwater Washdown On The Transom	16
Manufacturer Provided Image	16
Manufacturer Provided Image	16
CONTACTS	17
Contact details	17
Telephones	17
Office hours	17
Address	17

SPECIFICATIONS

Basic Information

Category: Cruising Yacht

Sub Category: Double Cabin

Model Year: 2002

Year Built: 2002

Dimensions

LOA: 38' (11.58mm)

Beam: 13

Max Draft: 3' 3" (0.99mm)

Speed, Capacities and Weight

Cruise Speed: 20 Knots Kts. (23 MPH)

Max Speed: 30 Knots Kts. (35 MPH)

Water Capacity: 75 Gallons

Holding Tank: 40 Gal Gallons

Fuel Capacity: 277 Gal Gallons

Accommodations

Total Cabins: 2

Total Berths: 2

Sleeps: 4

Total Heads: 2

Hull and Deck Information

Hull Material: Fiberglass

Deck Material: Fiberglass

Hull Configuration: Deep Vee

Engine Information

Engines: 2

Manufacturer: Mercruiser

Engine Type: Inboard

Fuel Type: Gas

PHOTOS

Manufacturer Provided Image



Aft Port View



Aft Starboard View



Transom View W/Huge Extended Swim Platform



Salon Looking Forward



Master Stateroom Looking Forward



Master Head W/Vacuflush Toilet, Shower, & Sink

Master Stateroom Looking Aft W/Flatscreen TV



Large Vanity W/Sink



Enclosed Walk-In Shower



Aft Double Berth That Easily Converts To Two Single Berths



Aft Berth W/Flatscreen TV



Aft Stateroom Vanity W/Sink



Aft Head W/Shower & Vacuflush Toilet



Fusion Stereo



Insignia Flatscreen TV & Full Galley



Convertible Settee To Starboard



Salon Looking Aft



Origo Microwave



Helm/Navigation Station



Raymarine C80 Plotter/Sounder/Radar



Interphase Forward Scanning Radar



Raymarine ST6002 Autopilot



Westmarine 550 VHF Marine Radio



**Radar Arch W/Tracvision Satellite,
Shakespeare SeaWatch Marine TV Antenna,
GPS Antenna, Satellite Weather Antenna,
Raymarine Closed Array Radar**



AC/DC Electrical Panel



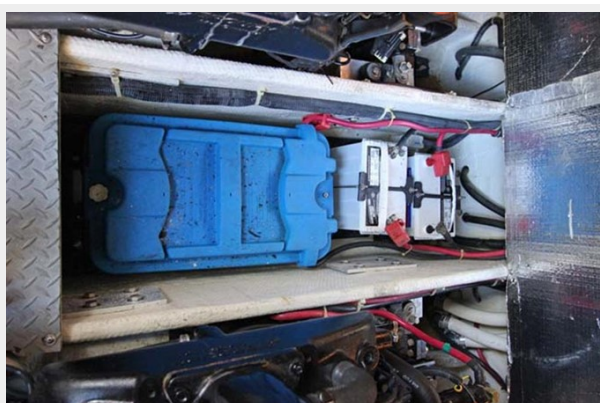
Charles Marine 60 Amp Battery Charger



Kohler Generator



Battery Bank



Shorepower Connections At Transom



Accessory Switch Panel



Instrument Panel & Danforth Compass



Double Helm Seats W/Flip-Up Bolsters



Walk-In Engine Room W/Electric Hatch



Engine Compartment



Port Engine



Starboard Engine



Engine Firewall W/Battery Charger, Main Breaker Panel, & Fire Suppression



Spacious Cockpit W/Lots Of Seating



Cockpit Looking Forward



Port Wrap-Around Seating W/Table



Aft Seating



Cockpit Wet-Bar



Slide-Out Cooler



Bow Looking Forward W/Large Sunpad



Bow Looking Aft



**Lofrans Electric Windless Anchor & Locker
W/Washdown**



Remote Operated Spotlight





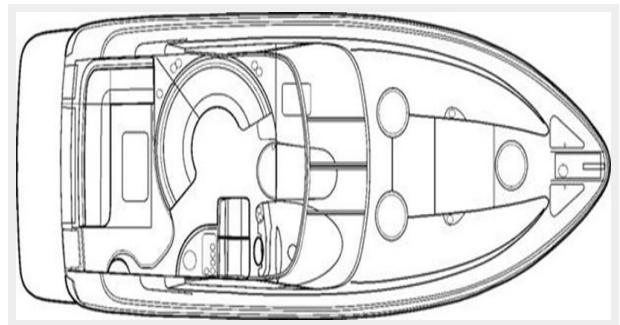
Large Transom Storage Locker



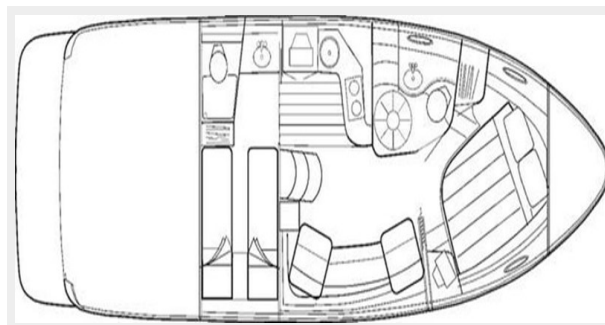
Hot & Cold Freshwater Washdown On The Transom



Manufacturer Provided Image



Manufacturer Provided Image



CONTACTS

Andrey Shestakov, leading yacht broker of the sales department of Shestakov Yacht Sales Inc. Shestakov Yacht Sales Inc., the official representative of the Miami/Fort Lauderdale FL headquarters.

Contact details

Email: andrey@shestakovyachtsales.com

Web: shestakovyachtsales.com/en/

Telephones

USA: +1(954)274-4435

Office hours

Monday – Saturday: **9:00 - 21:00** EDT

Sunday: **closed**

Address



Harbour Towne Marina, 850 NE 3rd St,
STE 213, Dania, FL 33004