

GRIANAN — MAINSHIP



Builder: MAINSHIP

Year Built: 2008

Model: Trawler

Price: PRICE ON APPLICATION

Location: United States

LOA: 40' 0" (12.19m)

Beam: 14' 2" (4.32m)

Min Draft: 3' 8" (1.12m)

Max Draft: 3' 8" (1.12m)

Cruise Speed: 8 Kts. (9 MPH)

Max Speed: 13 Kts. (15 MPH)

Our experienced yacht broker, Andrey Shestakov, will help you choose and buy a yacht that best suits your needs **Grianan — MAINSHIP** from our catalogue. Presently, at Shestakov Yacht Sales Inc., we have a wide variety of yachts available on our sale's list. We also work in close contact with all the big yacht manufacturers from all over the world.

If you would like to buy a yacht **Grianan — MAINSHIP** or would like help answering any questions concerning purchasing, selling or chartering a yacht, please call **+1(954)274-4435**

TABLE OF CONTENTS

TABLE OF CONTENTS	2
SPECIFICATIONS	5
Overview	5
Basic Information	5
Dimensions	5
Speed, Capacities and Weight	5
Accommodations	5
Hull and Deck Information	6
Engine Information	6
DETAILED INFORMATION	7
40' Mainship Overview	7
40' Mainship Vessel Walkthrough	7
40' Mainship Accommodations	7
40' Mainship Salon	7
40' Mainship Galley	7
40' Mainship Dining	8
40' Mainship Master Stateroom	8
40' Mainship Guest Stateroom	8
40' Mainship Laundry	8
40' Mainship Flybridge	8
40' Mainship Aftdeck	8
40' Mainship Audio/Visual Equipment	8
40' Mainship Electronics	9
40' Mainship Electrical System	9
40' Mainship Engine/Mechanical Equipment	9
40' Mainship Deck Equipment	10
40' Mainship Tender	11
40' Mainship Safety & Fire Protection	11

40' Mainship Exclusions	11
40' Mainship Disclaimer	12
Exclusions	12
Disclaimer	12
PHOTOS	13
40' Mainship anchor windlass	13
40' Mainship underway	13
40' Mainship port side deck 1	13
40' Mainship foredeck	13
40' Mainship port side deck 2	14
40' Mainship starboard side deck 1	14
40' Mainship starboard side deck 2	14
40' Mainship foredeck aft	14
40' Mainship flybridge forward photo 1	15
40' Mainship flybridge forward photo 2	15
40' Mainship flybridge aft photo 1	15
40' Mainship flybridge aft photo 2	15
40' Mainship flybridge port	15
40' Mainship flybridge starboard	15
40' Mainship flybridge helm	16
40' Mainship flybridge port seating	16
40' Mainship flybridge starboard seating	16
40' Mainship flybridge table	16
40' Mainship flybridge wetbar photo 1	16
40' Mainship flybridge wetbar photo 2	16
40' Mainship tender outboard	17
40' Mainship aftdeck forward	17
40' Mainship aftdeck port	17
40' Mainship aftdeck starboard	17

40' Mainship salon forward	17
40' Mainship salon aft	17
40' Mainship salon seating	18
40' Mainship galley photo 1	18
40' Mainship galley photo 2	18
40' Mainship dinette	18
40' Mainship lower helm	18
40' Mainship master stateroom	18
40' Mainship master stateroom port	19
40' Mainship master stateroom starboard	19
40' Mainship head	19
40' Mainship shower	19
40' Mainship washer-dryer	19
40' Mainship engine room	19
40' Mainship engine room aft	20
40' Mainship main engine photo 1	20
40' Mainship Racor fuel filter	20
40' Mainship main engine photo 2	20
40' Mainship oil change system	20
40' Mainship generator sound box	20
40' Mainship battery charger	21
40' Mainship generator	21
40' Mainship spare prop	21
40' Mainship stern thruster	21
CONTACTS	22
Contact details	22
Telephones	22
Office hours	22
Address	22

SPECIFICATIONS

Overview

Grianan is a 2008 2-stateroom Mainship trawler offering an Awlcraft 2000 Majestic Blue painted hull, bow and stern thrusters, 380 hp Yanmar main engine, Kohler 8.5 kW generator, washer/dryer and modern electronics. Grianan completed the Great Loop in 2011 and the Triangle Loop in 2013. Price reduced!

Basic Information

Category: Trawler

Sub Category: Sedan

Model Year: 2008

Year Built: 2008

Country: United States

Vessel Top: 2353

Fly Bridge: Yes

Dimensions

LOA: 40' 0" (12.19m)

Beam: 14' 2" (4.32m)

Min Draft: 3' 8" (1.12m)

Max Draft: 3' 8" (1.12m)

Speed, Capacities and Weight

Cruise Speed: 8 Kts. (9 MPH)

Max Speed: 13 Kts. (15 MPH)

Displacement: 24000 Pounds

Water Capacity: 130 Gallons

Holding Tank: 47 Gallons

Fuel Capacity: 300 Gallons

Accommodations

Total Cabins: 2

Total Berths: 4

Sleeps: 6

Total Heads: 1

Hull and Deck Information

Hull Material: Fiberglass

Deck Material: Composite Fiberglass

Hull Configuration: Modified V-Hull

Hull Color: Majestic Blue

Hull Finish: Aluminum

Engine Information

Engines: 1

Manufacturer: Yanmar

Model: 6LY3-UTP

Engine Type: Inboard

Fuel Type: Diesel

DETAILED INFORMATION

40' Mainship Overview

Grianan is a 2008 2 stateroom Mainship trawler offering an Awlcraft 2000 Majestic Blue painted hull, bow and stern thrusters, 380 hp Yanmar main engine, Kohler 8.5 kW generator, washer/dryer and modern electronics. Grianan completed the Great Loop in 2011 and the Triangle Loop in 2013. Price reduced!

40' Mainship Vessel Walkthrough

Entering the salon through the double aft doors from the covered aftdeck, you will find the galley to starboard, lower helm starboard forward, a sleeper sofa to port and a dinette port forward. Walk forward and step down into the guest foyer and you will find the head to starboard, guest stateroom to port and the master stateroom forward. Engine room access is through salon sole hatches. The flybridge is accessed via molded-in steps from the aftdeck.

40' Mainship Accommodations

Grianan offers a master stateroom forward with a queen size berth and a guest stateroom to port with side by side single berths. The head and enclosed shower/tub are located to starboard.

40' Mainship Salon

The salon offers a sleeper sofa and table to port, dinette port forward, lower helm and side deck access door starboard forward and the galley to starboard. The sole is laminate teak & holly and there are large side windows and a double aluminum and glass doors aft for loads of natural light and ventilation. There are also blinds and drapes.

40' Mainship Galley

The galley is located to starboard in the salon.

- Nova-Kool refrigerator/freezer
- Sunbeam microwave oven
- Seaward Princess Gourmet 3-burner electric cooktop
- Solid surface countertop
- Double stainless steel sinks

40' Mainship Dining

Dining space is available at the dinette and the flybridge folding table forward and a 2-person round table aft on the flybridge.

40' Mainship Master Stateroom

The master stateroom is located forward and offers an island queen size berth, reading lights, carpet, hanging locker, storage drawers and cabinets, 2 portlights and an overhead hatch.

40' Mainship Guest Stateroom

The guest stateroom is located to port and offers side by side single berths, carpet, reading lights, portlight and an overhead hatch, hanging locker, storage drawers and cabinets.

40' Mainship Laundry

Splendide combo washer-dryer.

40' Mainship Flybridge

The large flybridge offers a bimini, full Eisenglass enclosure, a full console forward with cover, Pompanette helm seat, built-in benchseats forward and on each side, a folding table, non-skid deck and a 2-person round table and a wetbar with a stainless steel sink, Vitrifrigo icemaker and Princess Gourmet BBQ grill with cover aft. There is an outboard bracket, hinged mast, spreader lights, rail netting and molded-in steps from the aftdeck.

40' Mainship Aftdeck

The covered aftdeck offers a transom door to the swimplatform, transom storage box, fresh water hot/cold shower, same level access to each side deck, folding steps on each side, molded-in steps to the flybridge, double aluminum and glass doors to the salon, lazarette access and non-skid deck.

40' Mainship Audio/Visual Equipment

- Sony CDX-HS70MS marine stereo with MP#, WMA, AAC, Atrac and sat ready on the flybridge
- West Marine speakers

- LG flat screen TV in the salon
- Bose 3-2-1 stereo and Bose speakers in the salon

40' Mainship Electronics

- Raymarine 4kW Radar
- Raymarine E80 Multi Function Display on the flybridge and at the lower helm (Up to date US and Canadian chips)
- Raymarine AIS 500 transceiver on the flybridge
- Raymarine Ray218 VHF on the flybridge
- Raymarine RayMic VHF at the lower helm
- Raymarine ST6002 Smart Pilot autopilot on the flybridge with remote at the lower helm
- Danforth magnetic compass on the flybridge and at the lower helm

40' Mainship Electrical System

- Kohler 9E0ZD 8.5kW generator with 210 hours
- 50 amp shore power connection fore and aft
- Pro Mariner ProMatic 1250c3 battery charger
- ProSafe1 galvanic isolator monitor
- Charles isolation transformer
- Smart Y twin 30 amp to 50 amp adapter

40' Mainship Engine/Mechanical Equipment

- Single Yanmar 6LY3-UTP 380 hp main engine
- Yanmar i5601E instrument panel at both helms

- ZF 85A gearboxes
- Racor 900MA fuel filter for main engine
- Fuel manifold
- Oil X-Changer oil change system
- Seastar hydraulic steering system
- Dripless shaft seal
- Sidepower bow & stern thrusters
- Bennett trim tabs
- Marine Air Systems reverse cycle air conditioning/heating system
- Fresh water manifold
- Attwood 6 gallon water heater
- Jabsco Par-Max 40 psi fresh water pump
- Jabsco fresh water system accumulator tank
- Jabsco Quiet Flush head
- SCAD holding tank level gauge
- Jabsco mascerator pump
- Spare propeller
- Spare parts inventory

40' Mainship Deck Equipment

- Lewmar anchor windlass with foot controls
- Delta 36lb anchor with 40' anchor chain and 150' nylon rode
- Fortress FX23 anchor with 40' anchor chain and 150' nylon rode

- Stainless steel double anchor roller
- Non-skid decks
- Washdown forward
- Stainless steel rails
- Stainless steel deck hardware
- Stainless steel Sampson Post
- Fiberglass swimplatform
- Swim ladder
- Windshield and window covers
- Hinged mast
- Spreader lights

40' Mainship Tender

- Zodiac 9'6" RIB
- Yamaha 2.5hp 4-stroke outboard
- Stainless steel tender davits aft

40' Mainship Safety & Fire Protection

- Seafire FE241 engine room fire suppression system
- Seafire emergency engine shutdown system
- Rule bilge pumps
- Zodiac liferaft
- Safe-T-Alert Carbon Monoxide monitors

40' Mainship Exclusions

Sellers' personal belongings

40' Mainship Disclaimer

The Company offers the details of this vessel in good faith but cannot guarantee or warrant the accuracy of this information nor warrant the condition of the vessel. A buyer should instruct his agents, or his surveyors, to investigate such details as the buyer desires validated. This vessel is offered subject to prior sale, price change, or withdrawal without notice.

Exclusions

Owner's personal belongings.

Disclaimer

The Company offers the details of this vessel or yacht in good faith but cannot guarantee or warrant the accuracy of this information nor warrant the condition of the vessel. A buyer should instruct his representatives, agents, or his surveyors, to investigate such details as the buyer desires validated. This vessel or yacht is offered subject to prior sale, price change, or withdrawal without notice.

PHOTOS

40' Mainship underway



40' Mainship anchor windlass



40' Mainship foredeck



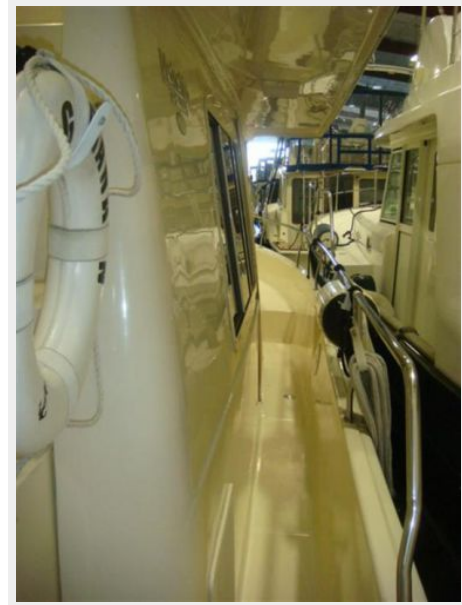
40' Mainship port side deck 1



40' Mainship port side deck 2



40' Mainship starboard side deck 1



40' Mainship starboard side deck 2



40' Mainship foredeck aft



40' Mainship flybridge forward photo 1



40' Mainship flybridge forward photo 2



40' Mainship flybridge aft photo 1



40' Mainship flybridge aft photo 2



40' Mainship flybridge port



40' Mainship flybridge starboard



40' Mainship flybridge helm



40' Mainship flybridge port seating



40' Mainship flybridge starboard seating



40' Mainship flybridge table



40' Mainship flybridge wetbar photo 1



40' Mainship flybridge wetbar photo 2



40' Mainship tender outboard



40' Mainship aftdeck forward



40' Mainship aftdeck port



40' Mainship aftdeck starboard



40' Mainship salon forward



40' Mainship salon aft



40' Mainship salon seating



40' Mainship galley photo 1



40' Mainship galley photo 2



40' Mainship dinette



40' Mainship lower helm



40' Mainship master stateroom



40' Mainship master stateroom port



40' Mainship master stateroom starboard



40' Mainship head



40' Mainship shower



40' Mainship washer-dryer



40' Mainship engine room



40' Mainship engine room aft



40' Mainship main engine photo 1



40' Mainship main engine photo 2



40' Mainship Racor fuel filter



40' Mainship oil change system



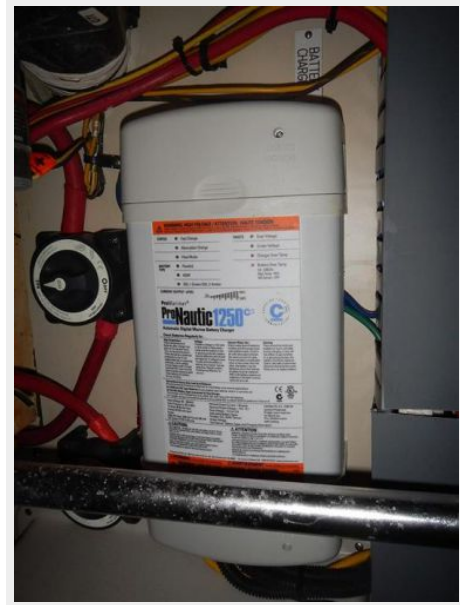
40' Mainship generator sound box



40' Mainship generator



40' Mainship battery charger



40' Mainship spare prop



40' Mainship stern thruster



CONTACTS

Andrey Shestakov, leading yacht broker of the sales department of Shestakov Yacht Sales Inc. Shestakov Yacht Sales Inc., the official representative of the Miami/Fort Lauderdale FL headquarters.

Contact details

Email: andrey@shestakovyachtsales.com

Web: shestakovyachtsales.com/en/

Telephones

USA: +1(954)274-4435

Office hours

Monday – Saturday: **9:00 - 21:00** EDT

Sunday: **closed**

Address



Harbour Towne Marina, 850 NE 3rd St,
STE 213, Dania, FL 33004