

## GRIANAN — MAINSHIP



**Судостроитель:** MAINSHIP

**Год постройки:** 2008

**Модель:** Траулер

**Цена:** **ЦЕНА ЯХТЫ ПО ЗАПРОСУ**

**Местонахождение:** United States

**Длина общая:** 40' 0" (12.19m)

**Ширина:** 14' 2" (4.32m)

**Мин. осадка:** 3' 8" (1.12m)

**Макс. осадка:** 3' 8" (1.12m)

**Крейс. скорость:** 8 Kts. (9 MPH)

**Макс. скорость:** 13 Kts. (15 MPH)

Купить **Grianan — MAINSHIP** а также выбрать подходящую вам яхту из нашего каталога яхт вам поможет опытный яхтенный брокер Андрей Шестаков. На сегодняшний день компания **Shestakov Yacht Sales Inc.** имеет большое количество яхт в собственном списке продаж, а также тесно сотрудничает со всеми крупными яхтенными производителями по всему миру.

Для того чтобы купить яхту **Grianan — MAINSHIP** а также проконсультироваться по любому вопросу связанному с покупкой, продажей, чартером яхт позвоните по телефону **+7(918)465-66-44**.

# ОГЛАВЛЕНИЕ

---

ОГЛАВЛЕНИЕ	2
ХАРАКТЕРИСТИКИ	5
Обзор	5
Основная информация	5
Размеры	5
Скорость, вместимость и масса	5
Размещение	5
Корпус и палуба	6
Информация о двигателе	6
ПОДРОБНОЕ ОПИСАНИЕ	7
40' Mainship Overview	7
40' Mainship Vessel Walkthrough	7
40' Mainship Accommodations	7
40' Mainship Salon	7
40' Mainship Galley	7
40' Mainship Dining	8
40' Mainship Master Stateroom	8
40' Mainship Guest Stateroom	8
40' Mainship Laundry	8
40' Mainship Flybridge	8
40' Mainship Aftdeck	8
40' Mainship Audio/Visual Equipment	8
40' Mainship Electronics	9
40' Mainship Electrical System	9
40' Mainship Engine/Mechanical Equipment	9
40' Mainship Deck Equipment	10
40' Mainship Tender	11
40' Mainship Safety & Fire Protection	11

40' Mainship Exclusions	11
40' Mainship Disclaimer	12
Исключения	12
Отказ от ответственности	12
<b>ФОТОГРАФИИ</b>	<b>13</b>
40' Mainship anchor windlass	13
40' Mainship underway	13
40' Mainship port side deck 1	13
40' Mainship foredeck	13
40' Mainship port side deck 2	14
40' Mainship starboard side deck 1	14
40' Mainship starboard side deck 2	14
40' Mainship foredeck aft	14
40' Mainship flybridge forward photo 1	15
40' Mainship flybridge forward photo 2	15
40' Mainship flybridge aft photo 1	15
40' Mainship flybridge aft photo 2	15
40' Mainship flybridge port	15
40' Mainship flybridge starboard	15
40' Mainship flybridge helm	16
40' Mainship flybridge port seating	16
40' Mainship flybridge starboard seating	16
40' Mainship flybridge table	16
40' Mainship flybridge wetbar photo 1	16
40' Mainship flybridge wetbar photo 2	16
40' Mainship tender outboard	17
40' Mainship aftdeck forward	17
40' Mainship aftdeck port	17
40' Mainship aftdeck starboard	17

40' Mainship salon forward	17
40' Mainship salon aft	17
40' Mainship salon seating	18
40' Mainship galley photo 1	18
40' Mainship galley photo 2	18
40' Mainship dinette	18
40' Mainship lower helm	18
40' Mainship master stateroom	18
40' Mainship master stateroom port	19
40' Mainship master stateroom starboard	19
40' Mainship head	19
40' Mainship shower	19
40' Mainship washer-dryer	19
40' Mainship engine room	19
40' Mainship engine room aft	20
40' Mainship main engine photo 1	20
40' Mainship Racor fuel filter	20
40' Mainship main engine photo 2	20
40' Mainship oil change system	20
40' Mainship generator sound box	20
40' Mainship battery charger	21
40' Mainship generator	21
40' Mainship spare prop	21
40' Mainship stern thruster	21
<b>КОНТАКТЫ</b>	<b>22</b>
Контактная информация	22
Телефоны	22
Время работы	22
Адрес	22

# ХАРАКТЕРИСТИКИ

## Обзор

Grianan is a 2008 2-stateroom Mainship trawler offering an Awlcraft 2000 Majestic Blue painted hull, bow and stern thrusters, 380 hp Yanmar main engine, Kohler 8.5 kW generator, washer/dryer and modern electronics. Grianan completed the Great Loop in 2011 and the Triangle Loop in 2013. Price reduced!

## Основная информация

<b>Тип судна:</b> Траулер	<b>Подкатегория:</b> Sedan
<b>Модельный год:</b> 2008	<b>Год постройки:</b> 2008
<b>Страна:</b> United States	<b>Верх:</b> 2353
<b>Открытая палуба мостика:</b> Да	

## Размеры

<b>Длина общая:</b> 40' 0" (12.19m)	<b>Ширина:</b> 14' 2" (4.32m)
<b>Мин. осадка:</b> 3' 8" (1.12m)	<b>Макс. осадка:</b> 3' 8" (1.12m)

## Скорость, вместимость и масса

<b>Крейс. скорость:</b> 8 Kts. (9 MPH)	<b>Макс. скорость:</b> 13 Kts. (15 MPH)
<b>Водоизмещение:</b> 24000 Pounds	<b>Вместимость воды:</b> 130 Gallons
<b>Вместимость сточного бака:</b> 47 Gallons	<b>Объем топливного бака:</b> 300 Gallons

## Размещение

<b>Всего кают:</b> 2	<b>Всего коек:</b> 4
<b>Спальные места:</b> 6	<b>Всего ком. состава:</b> 1

## Корпус и палуба

---

**Материал корпуса:** Fiberglass

**Материал палубы:** Composite Fiberglass

**Комплектация корпуса:** Modified V-Hull

**Цвет корпуса:** Majestic Blue

**Отделка корпуса:** Aluminum

## Информация о двигателе

---

**Двигатели:** 1

**Производитель:** Yanmar

**Модель:** 6LY3-UTP

**Тип двигателя:** Inboard

**Тип топлива:** Diesel

---

# ПОДРОБНОЕ ОПИСАНИЕ

---

## 40' Mainship Overview

---

Grianan is a 2008 2 stateroom Mainship trawler offering an Awlcraft 2000 Majestic Blue painted hull, bow and stern thrusters, 380 hp Yanmar main engine, Kohler 8.5 kW generator, washer/dryer and modern electronics. Grianan completed the Great Loop in 2011 and the Triangle Loop in 2013. Price reduced!

## 40' Mainship Vessel Walkthrough

---

Entering the salon through the double aft doors from the covered aftdeck, you will find the galley to starboard, lower helm starboard forward, a sleeper sofa to port and a dinette port forward. Walk forward and step down into the guest foyer and you will find the head to starboard, guest stateroom to port and the master stateroom forward. Engine room access is through salon sole hatches. The flybridge is accessed via molded-in steps from the aftdeck.

## 40' Mainship Accommodations

---

Grianan offers a master stateroom forward with a queen size berth and a guest stateroom to port with side by side single berths. The head and enclosed shower/tub are located to starboard.

## 40' Mainship Salon

---

The salon offers a sleeper sofa and table to port, dinette port forward, lower helm and side deck access door starboard forward and the galley to starboard. The sole is laminate teak & holly and there are large side windows and a double aluminum and glass doors aft for loads of natural light and ventilation. There are also blinds and drapes.

## 40' Mainship Galley

---

The galley is located to starboard in the salon.

- Nova-Kool refrigerator/freezer
- Sunbeam microwave oven
- Seaward Princess Gourmet 3-burner electric cooktop
- Solid surface countertop
- Double stainless steel sinks

---

## 40' Mainship Dining

---

Dining space is available at the dinette and the flybridge folding table forward and a 2-person round table aft on the flybridge.

---

## 40' Mainship Master Stateroom

---

The master stateroom is located forward and offers an island queen size berth, reading lights, carpet, hanging locker, storage drawers and cabinets, 2 portlights and an overhead hatch.

---

## 40' Mainship Guest Stateroom

---

The guest stateroom is located to port and offers side by side single berths, carpet, reading lights, portlight and an overhead hatch, hanging locker, storage drawers and cabinets.

---

## 40' Mainship Laundry

---

Splendide combo washer-dryer.

---

## 40' Mainship Flybridge

---

The large flybridge offers a bimini, full Eisenglass enclosure, a full console forward with cover, Pompanette helm seat, built-in benchseats forward and on each side, a folding table, non-skid deck and a 2-person round table and a wetbar with a stainless steel sink, Vitrifrigo icemaker and Princess Gourmet BBQ grill with cover aft. There is an outboard bracket, hinged mast, spreader lights, rail netting and molded-in steps from the aftdeck.

---

## 40' Mainship Aftdeck

---

The covered aftdeck offers a transom door to the swimplatform, transom storage box, fresh water hot/cold shower, same level access to each side deck, folding steps on each side, molded-in steps to the flybridge, double aluminum and glass doors to the salon, lazarette access and non-skid deck.

---

## 40' Mainship Audio/Visual Equipment

---

- Sony CDX-HS70MS marine stereo with MP#, WMA, AAC, Atrac and sat ready on the flybridge
- West Marine speakers



- LG flat screen TV in the salon
- Bose 3-2-1 stereo and Bose speakers in the salon

## 40' Mainship Electronics

---

- Raymarine 4kW Radar
- Raymarine E80 Multi Function Display on the flybridge and at the lower helm (Up to date US and Canadian chips)
- Raymarine AIS 500 transceiver on the flybridge
- Raymarine Ray218 VHF on the flybridge
- Raymarine RayMic VHF at the lower helm
- Raymarine ST6002 Smart Pilot autopilot on the flybridge with remote at the lower helm
- Danforth magnetic compass on the flybridge and at the lower helm

## 40' Mainship Electrical System

---

- Kohler 9E0ZD 8.5kW generator with 210 hours
- 50 amp shore power connection fore and aft
- Pro Mariner ProMatic 1250c3 battery charger
- ProSafe1 galvanic isolator monitor
- Charles isolation transformer
- Smart Y twin 30 amp to 50 amp adapter

## 40' Mainship Engine/Mechanical Equipment

---

- Single Yanmar 6LY3-UTP 380 hp main engine
- Yanmar i5601E instrument panel at both helms

- ZF 85A gearboxes
- Racor 900MA fuel filter for main engine
- Fuel manifold
- Oil X-Changer oil change system
- Seastar hydraulic steering system
- Dripless shaft seal
- Sidepower bow & stern thrusters
- Bennett trim tabs
- Marine Air Systems reverse cycle air conditioning/heating system
- Fresh water manifold
- Attwood 6 gallon water heater
- Jabsco Par-Max 40 psi fresh water pump
- Jabsco fresh water system accumulator tank
- Jabsco Quiet Flush head
- SCAD holding tank level gauge
- Jabsco mascerator pump
- Spare propeller
- Spare parts inventory

## 40' Mainship Deck Equipment

---

- Lewmar anchor windlass with foot controls
- Delta 36lb anchor with 40' anchor chain and 150' nylon rode
- Fortress FX23 anchor with 40' anchor chain and 150' nylon rode

- Stainless steel double anchor roller
- Non-skid decks
- Washdown forward
- Stainless steel rails
- Stainless steel deck hardware
- Stainless steel Sampson Post
- Fiberglass swimplatform
- Swim ladder
- Windshield and window covers
- Hinged mast
- Spreader lights

## **40' Mainship Tender**

---

- Zodiac 9'6" RIB
- Yamaha 2.5hp 4-stroke outboard
- Stainless steel tender davits aft

## **40' Mainship Safety & Fire Protection**

---

- Seafire FE241 engine room fire suppression system
- Seafire emergency engine shutdown system
- Rule bilge pumps
- Zodiac liferaft
- Safe-T-Alert Carbon Monoxide monitors

## **40' Mainship Exclusions**

---

Sellers' personal belongings

---

## 40' Mainship Disclaimer

---

The Company offers the details of this vessel in good faith but cannot guarantee or warrant the accuracy of this information nor warrant the condition of the vessel. A buyer should instruct his agents, or his surveyors, to investigate such details as the buyer desires validated. This vessel is offered subject to prior sale, price change, or withdrawal without notice.

---

## Исключения

---

При продаже яхты исключаются личные вещи владельца.

---

## Отказ от ответственности

---

Компания предоставляет описание судна или яхты добросовестно, но не может гарантировать точность этой информации, а также не ручается за техническое состояние. Покупатель должен проинструктировать своих агентов или оценщиков исследовать представленную информацию более подробно, по собственному желанию. Продажа судна или яхты, изменение цены или снятие с продажи будет происходить без предварительного уведомления.

# ФОТОГРАФИИ

40' Mainship underway



40' Mainship anchor windlass



40' Mainship foredeck



40' Mainship port side deck 1



**40' Mainship port side deck 2**



**40' Mainship starboard side deck 1**



**40' Mainship starboard side deck 2**



**40' Mainship foredeck aft**



**40' Mainship flybridge forward photo 1**



**40' Mainship flybridge forward photo 2**



**40' Mainship flybridge aft photo 1**



**40' Mainship flybridge aft photo 2**



**40' Mainship flybridge port**



**40' Mainship flybridge starboard**





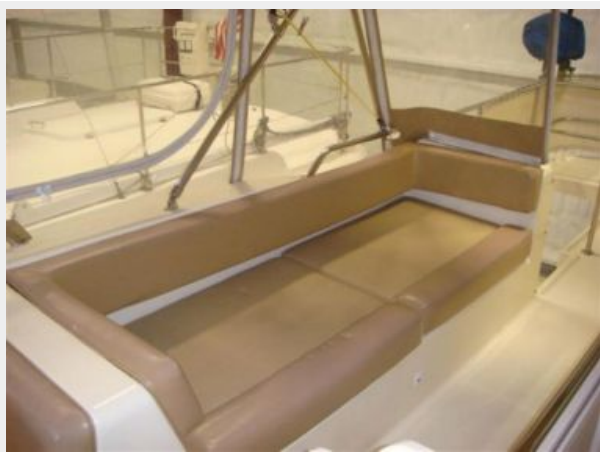
**40' Mainship flybridge helm**



**40' Mainship flybridge port seating**



**40' Mainship flybridge starboard seating**



**40' Mainship flybridge table**



**40' Mainship flybridge wetbar photo 1**



**40' Mainship flybridge wetbar photo 2**





**40' Mainship tender outboard**



**40' Mainship aftdeck forward**



**40' Mainship aftdeck port**



**40' Mainship aftdeck starboard**



**40' Mainship salon forward**



**40' Mainship salon aft**



**40' Mainship salon seating**



**40' Mainship galley photo 1**



**40' Mainship galley photo 2**



**40' Mainship dinette**



**40' Mainship lower helm**



**40' Mainship master stateroom**





**40' Mainship master stateroom port**



**40' Mainship master stateroom starboard**



**40' Mainship head**



**40' Mainship shower**



**40' Mainship washer-dryer**



**40' Mainship engine room**



40' Mainship engine room aft



40' Mainship main engine photo 1



40' Mainship main engine photo 2



40' Mainship Racor fuel filter



40' Mainship oil change system



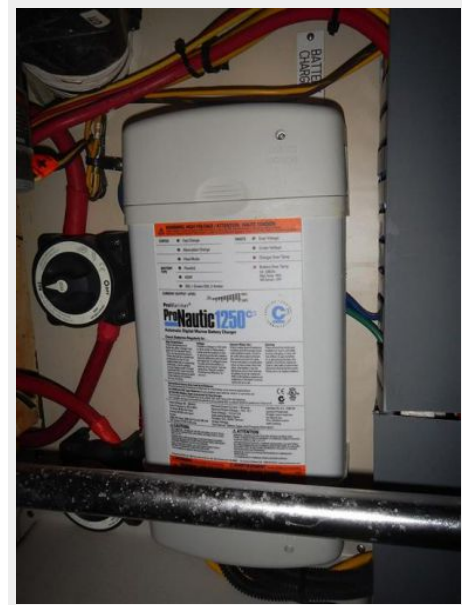
40' Mainship generator sound box



40' Mainship generator



40' Mainship battery charger



40' Mainship spare prop



40' Mainship stern thruster





# КОНТАКТЫ

Андрей Шестаков (Andrey Shestakov) – ведущий яхтенный брокер отдела продаж яхт и судов компании Shestakov Yacht Sales Inc. Официальный представитель Shestakov Yacht Sales Inc. для русскоговорящих клиентов в центральном офисе компании в Майами/Форт Лодердейл/Флорида/США.

## Контактная информация

Email: [andrey@shestakovyachtsales.com](mailto:andrey@shestakovyachtsales.com)

Web: [shestakovyachtsales.com](http://shestakovyachtsales.com)

## Телефоны

Краснодарский край: **+7(918)465-66-44**

США, Майами, Флорида: **+1(954)274-4435**

## Время работы

Понедельник – Суббота: **9:00 - 21:00**  
EDT

Воскресенье: **Закрето**

## Адрес



Harbour Towne Marina, 850 NE 3rd St,  
STE 213, Dania, FL 33004