

63 BERTRAM — BERTRAM



Builder: BERTRAM

Year Built: 2008

Model: Sport Fisherman

Price: PRICE ON APPLICATION

Location: United States

LOA: 63' 0" (19.20m)

Beam: 18' 1" (5.51m)

Max Draft: 5' 3" (1.60m)

Cruise Speed: 36 Kts. (41 MPH)

Max Speed: 40 Kts. (46 MPH)

Our experienced yacht broker, Andrey Shestakov, will help you choose and buy a yacht that best suits your needs **63 Bertram — BERTRAM** from our catalogue. Presently, at Shestakov Yacht Sales Inc., we have a wide variety of yachts available on our sale's list. We also work in close contact with all the big yacht manufacturers from all over the world.

If you would like to buy a yacht **63 Bertram — BERTRAM** or would like help answering any questions concerning purchasing, selling or chartering a yacht, please call **+1(954)274-4435**

TABLE OF CONTENTS

TABLE OF CONTENTS	2
SPECIFICATIONS	3
Basic Information	3
Dimensions	3
Speed, Capacities and Weight	3
Accommodations	3
Hull and Deck Information	3
Engine Information	4
DETAILED INFORMATION	5
Description	5
Interior Features	5
Exterior Features	6
Systems & Equipment	6
Engine Room	6
Exclusions	7
Disclaimer	7
PHOTOS	8
CONTACTS	24
Contact details	24
Telephones	24
Office hours	24
Address	24

SPECIFICATIONS

Basic Information

Category: Sport Fisherman

Model Year: 2008

Year Built: 2008

Country: United States

Vessel Top: 2359

Fly Bridge: Yes

Cockpit: Yes

Dimensions

LOA: 63' 0" (19.20m)

Beam: 18' 1" (5.51m)

Max Draft: 5' 3" (1.60m)

Speed, Capacities and Weight

Cruise Speed: 36 Kts. (41 MPH)

Max Speed: 40 Kts. (46 MPH)

Displacement: 90672 Pounds

Water Capacity: 251 Gallons

Fuel Capacity: 1849 Gallons

Accommodations

Total Cabins: 4

Total Berths: 6

Total Heads: 3

Hull and Deck Information

Hull Material: Fiberglass

Engine Information

Engines: 2

Manufacturer: MTU

Model: 16V-2000

Engine Type: Inboard

Fuel Type: Diesel

DETAILED INFORMATION

Description

The Bertram 630 offers accommodations unsurpassed for luxury comfort in a tough-built hull and package which has earned the brand the nickname "the battle wagons of the sea". The 4 bedroom / 3 full bathroom layout is perfect for spacious on-board living and entertaining for up to 8 people and with dual generators, this yacht is equipped for self-sustained living anywhere in the world. Fish and cruise the world with luxury and strength with this 630 Bertram yacht.

This 63 Bertram is the most optioned boat to be built by the legendary Bertram factory. Some notable features are twin gyro stabilizers, the larger MTU engine upgrade, full tower with hydraulic outriggers, twin generators, night vision, satellite radio and tv.

A pure fishing machine - more space, larger storage, improved lines of sight and even better real world performance in terms of speed, balance and maneuverability. The 630 is the first in its size to incorporate the cockpit-clearing, safer stairway-to-bridge design. This boat has a 4 stateroom, 3 head layout.

This yacht has been designed and built to work in the most extreme environments. It has been tested beyond its limits by the world famous Bertram New Product Development Team.

Owner will respond to all offers. Interesting trades considered. A "must see" for any picky, obsessive large sport fish buyer.

Interior Features

- Custom after-market comfort bed mattresses
- Silk bed linens & decor pillows for all beds
- Four bedroom / three full bathroom layout configuration
- Full washer & dryer
- 2 refrigerators & 2 freezers (Sub-Zero brand)
- Drawer dishwasher
- Electric stove top and microwave oven
- Ultra soft leather sofas, dining table
- Integrated wireless internet
- Big-screen 42" flat screen TV with Bose surround sound speaker system, DVD system and additional individual TVs in each bedroom
- Matte finish interior woodwork
- Central vacuum
- Ice maker
- 3 Tecma electronic toilets

Exterior Features

- New bottom paint, zincs and prop speed done every spring
- External protective spiral staircase to bridge (rather than traditional ladder)
- Bow-thruster, electronic controlled anchor, underwater lighting, onboard water maker, ice maker
- Live fish well, cockpit bait freezer locker
- Hydraulic outriggers with highly desirable and aesthetic "Bridge Mount" design and internally concealed dual electronic teasers
- Fully rigged tuna tower constructed by Pipewelders - complete surround tower spot lighting and multi-color changing illumination lighting.
- Full bridge with three (3) large screen color displays, Furuno 96 mile long-range radar, night-vision camera system, satellite radio, satellite TV, Simrod plot tracking, fish finder, dual VHF, MTU touch screen engine display
- Full eisenglass enclosed bridge with custom installed dinette table, bridge refrigerator, bridge sink, and locked rod-stowage locker
- Release brand bridge helm chairs and cockpit fighting chair (Release is the leading industry brand)
- Cockpit and Mezzanine air-conditioning and heating
- Seating with custom teak covered deck and stairs and fish-finder display
- Hydraulic anchor windlass

Systems & Equipment

- 5 Furuno NavNet systems with radar and sounder satellite weather
- 1 ACR automatic spotlight
- 2 Icom IC-M504 VHF radios
- 1 FLIR infrared remote controlled camera
- 2 Switlik liferafts
- 1 Simrad AP25 Autopilot
- FCI Aquamisert fresh water maker
- Delta T engine room blower system
- Seafire halon fire suppression system for engine room
- Furuno RD 30 depth sounder
- ZF electronic controls with trolling valves
- 2 Miya Eroch US-9 electric teaser reels
- Video monitoring system with 6 cameras
- Premium alarm system with remote access and recorder
- KVH satellite TV receiver and gyroscopic antenna
- 2 cable masters systems

Engine Room

- Four new turbos
- Props reconditioned (March 2013), engines and engine room painted (Feb 2013)
- 2 Kohler gen-sets 25 kw each for self-sustaining offshore living
- Largest available engines for the yacht size class with trolling valves
- Delta T - forced air induction system that virtually eliminates saltwater intrusion into the engine compartment
- LOW ENGINE HOURS and under warranty until July 2014
- Twin anti-roll gyros by Mitsubishi (greatly reducing offshore rocking/rolling)

Exclusions

Owner's personal belongings.

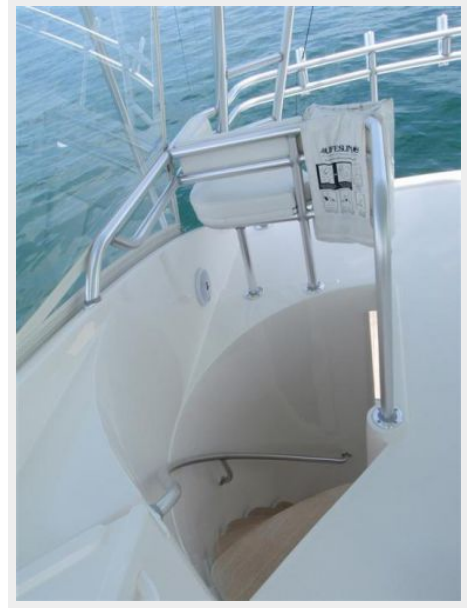
Disclaimer

The Company offers the details of this vessel or yacht in good faith but cannot guarantee or warrant the accuracy of this information nor warrant the condition of the vessel. A buyer should instruct his representatives, agents, or his surveyors, to investigate such details as the buyer desires validated. This vessel or yacht is offered subject to prior sale, price change, or withdrawal without notice.

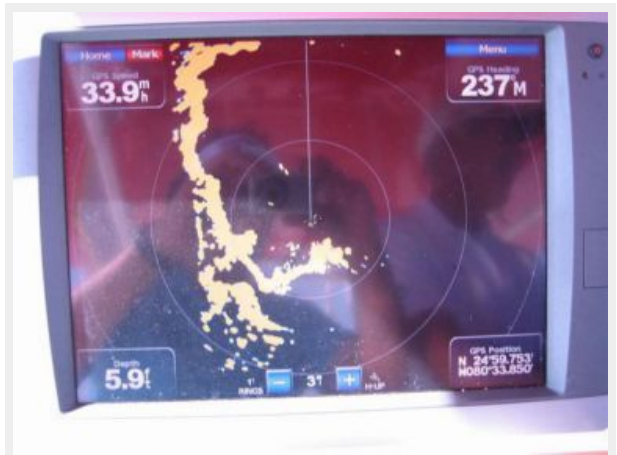
PHOTOS

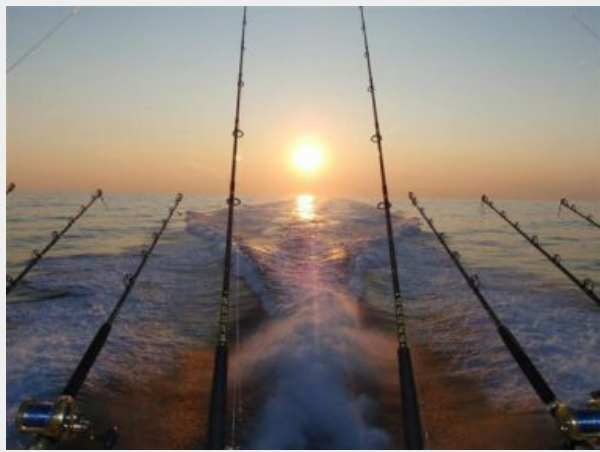
















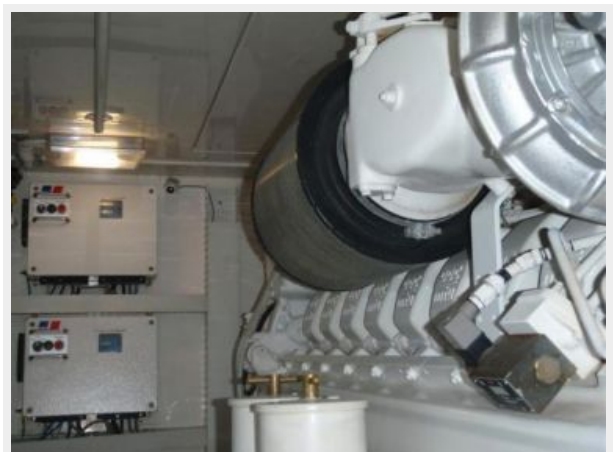




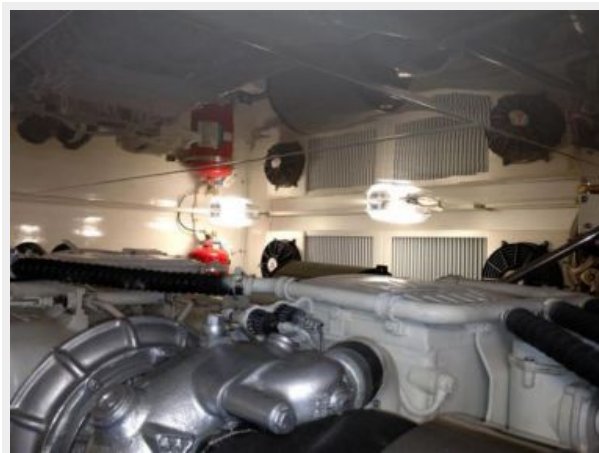
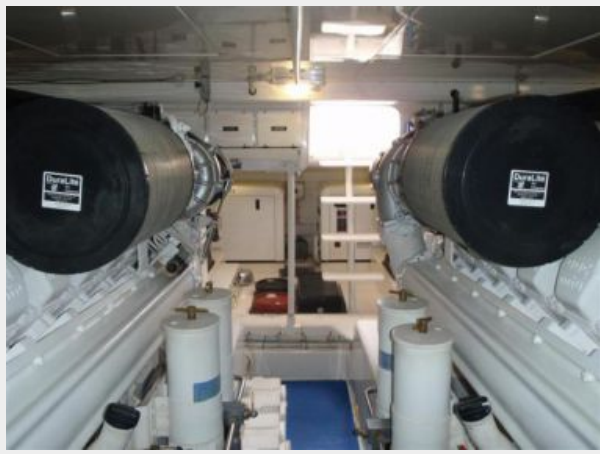












CONTACTS

Andrey Shestakov, leading yacht broker of the sales department of Shestakov Yacht Sales Inc. Shestakov Yacht Sales Inc., the official representative of the Miami/Fort Lauderdale FL headquarters.

Contact details

Email: andrey@shestakovyachtsales.com

Web: shestakovyachtsales.com/en/

Telephones

USA: +1(954)274-4435

Office hours

Monday – Saturday: **9:00 - 21:00** EDT

Sunday: **closed**

Address



Harbour Towne Marina, 850 NE 3rd St,
STE 213, Dania, FL 33004