

JW — WESTPORT



Судостроитель: WESTPORT

Год постройки: 2007

Модель: Моторная яхта

Цена: **ЦЕНА ЯХТЫ ПО ЗАПРОСУ**

Местонахождение: United States

Длина общая: 130' 0" (39.62m)

Ширина: 26' 0" (7.92m)

Макс. осадка: 6' 6" (1.98m)

Крейс. скорость: 20 Kts. (23 MPH)

Макс. скорость: 25 Kts. (29 MPH)

Купить JW — WESTPORT а также выбрать подходящую вам яхту из нашего каталога яхт вам поможет опытный яхтенный брокер Андрей Шестаков. На сегодняшний день компания Shestakov Yacht Sales Inc. имеет большое количество яхт в собственном списке продаж, а также тесно сотрудничает со всеми крупными яхтенными производителями по всему миру.

Для того чтобы купить яхту JW — WESTPORT а также проконсультироваться по любому вопросу связанному с покупкой, продажей, чартером яхт позвоните по телефону **+7(918)465-66-44**.

ОГЛАВЛЕНИЕ

| | |
|-------------------------------|----|
| ОГЛАВЛЕНИЕ | 2 |
| ХАРАКТЕРИСТИКИ | 5 |
| Основная информация | 5 |
| Размеры | 5 |
| Скорость, вместимость и масса | 5 |
| Размещение | 5 |
| Корпус и палуба | 5 |
| Информация о двигателе | 6 |
| ПОДРОБНОЕ ОПИСАНИЕ | 7 |
| Overview | 7 |
| Vessel Walkthrough | 7 |
| Features Summary | 7 |
| Aft Deck | 7 |
| Salon | 8 |
| Dining | 8 |
| Entryway and Day Head | 8 |
| Galley | 9 |
| Pilothouse | 9 |
| Master Stateroom | 10 |
| Master Head | 10 |
| VIP Stateroom - Port | 11 |
| VIP Head - Port | 11 |
| VIP Stateroom - Starboard | 11 |
| VIP Head - Starboard | 12 |
| Guest Stateroom - Port | 12 |
| Guest Head - Port | 12 |
| Guest Stateroom - Starboard | 12 |
| Guest Head - Starboard | 13 |

| | |
|---|-----------|
| Captain / Crew Quarters | 13 |
| Captain's Stateroom | 13 |
| Captain's Head | 13 |
| Crew Quarters & Heads | 14 |
| Storage / Utility / Engineer's Quarters | 14 |
| Crew Lounge | 14 |
| Sky Lounge | 15 |
| Fly Bridge | 15 |
| Foredeck | 16 |
| Boat Deck | 16 |
| Electronics | 16 |
| Electrical | 17 |
| Stern | 17 |
| Bow | 17 |
| Engines and Mechanical Equipment | 18 |
| Plumbing | 18 |
| Exclusions | 19 |
| Исключения | 19 |
| Отказ от ответственности | 19 |
| ФОТОГРАФИИ | 20 |
| Main Salon | 20 |
| Main Salon | 20 |
| Dining | 20 |
| Aft Deck | 20 |
| Stairwell | 20 |
| Galley | 20 |
| Sky Lounge | 21 |
| Sky Lounge Deck | 21 |
| Jacuzzi | 21 |

| | |
|-----------------------|-----------|
| Sky Lounge Deck | 21 |
| Pilothouse | 21 |
| Master Stateroom | 21 |
| Master Bath | 22 |
| Guest Stateroom | 22 |
| Guest Stateroom | 22 |
| Twin Stateroom | 22 |
| Twin Stateroom | 22 |
| Fly Bridge | 22 |
| Fly Bridge | 23 |
| Fly Bridge | 23 |
| Fly Bridge | 23 |
| Bow | 23 |
| JW 130' Westport | 23 |
| Engine Room | 23 |
| GA | 24 |
| КОНТАКТЫ | 25 |
| Контактная информация | 25 |
| Телефоны | 25 |
| Время работы | 25 |
| Адрес | 25 |

ХАРАКТЕРИСТИКИ

Основная информация

Тип судна: Моторная яхта

Модельный год: 2008

Год постройки: 2007

Страна: United States

Верх: 2363

Размеры

Длина общая: 130' 0" (39.62m)

Ширина: 26' 0" (7.92m)

Макс. осадка: 6' 6" (1.98m)

Скорость, вместимость и масса

Крейс. скорость: 20 Kts. (23 MPH)

Макс. скорость: 25 Kts. (29 MPH)

Вместимость воды: 1620 Gallons

Объем топливного бака: 9900 Gallons

Размещение

Всего кают: 5

Спальные места: 10

Каюты экипажа: 4

Корпус и палуба

Материал корпуса: Fiberglass

Материал палубы: Teak

Комплектация корпуса: Modified V-Hull

Информация о двигателе

Двигатели: 2

Производитель: MTU

Модель: 12V4000

Тип двигателя: Inboard

Тип топлива: Diesel

ПОДРОБНОЕ ОПИСАНИЕ

Overview

"JW" represents an extremely clean model 2008 130' Westport that has benefited from a knowledgeable owner, very attentive crew and 100% private usage. Her interior features a spacious five stateroom layout with the sought after raised panel Mahogany woodwork. Among her many features and upgrades: * Hard top * Teak decks * Bow and Stern thrusters * Hydraulic passerelle * Fly bridge helm station * Alfa Laval - fuel treatment system * Headhunter black water treatment plant system * Kaleidescape video system

Vessel Walkthrough

"JW" offers five staterooms plus accommodations for six crew. The master stateroom is on deck forward, and offers a very open feeling with en-suite his and her heads and king size bed. There are two mirror image VIP staterooms down the stairs amid ship, one is to port and the other starboard, both offer en-suite head with king berths. The fourth and fifth guest staterooms are twins with en-suite heads. The large aft deck offers a walk-behind bar with large TV to port forward corner of aft deck with surround sound. Going forward from the aft deck, through counter balanced stainless steel sliding doors, you enter the salon which includes luxurious sofas and occasional chairs and cocktail table. The formal dining area forward of the salon and the stairway up to the pilothouse/sun lounge is forward in the starboard walk-thru and a second stairway down to the guest cabins is forward. There is a door to port for direct access between the galley and the dining area. The day head is forward and to starboard and offers a Royal Flush Hydro Vac toilet, stone vanity top and matching marble flooring.

Features Summary

- Interior joinery raised panel Mahogany with Burl inlays throughout, done in a satin finish with high gloss features
- Bow and stern thrusters
- Black water treatment plant
- 25 knot max speed
- Great fuel efficiency at 1100 RPM, which burn rate is approx. 33 gallons total at 12 knots @33% load
- 6'6" draft, loaded
- Hydraulic passerelle
- ASEA shore power converter
- Teak decks

Aft Deck

- Aft deck bar: (2) Subzero drawers and Hoshizaki ice maker, sink with hot/cold water and storage for barware
- Built-in settee with cushions and ottoman
- Westcoast 72" round teak table with polished stainless steel pedestal and 7 chairs 40" HDTV
- Teak deck
- Spiral staircase leading up to boat deck and down to engineers control room
- (2) Southerland teak lounge chairs with ottoman

Salon

The salon is large, bright, airy and expansive that comes with very good seating and a large console in the starboard aft corner for the 50" television. Some of the features include:

- Custom upholstered couch
- Wood cocktail table with glass top
- (2) Club chairs
- End table with lamp
- Game table with (2) upholstered chairs
- 50" HDTV
- DVD player
- Surround sound
- Majilite headliner
- Hunter Douglas blinds and window treatments

Dining

- Mahogany dining table with (10) upholstered wood framed dining chairs
- Custom recessed overhead light fixtures
- Built-in Mahogany buffet/storage cabinets port and starboard
- U-line wine cooler in custom Mahogany cabinet
- Stereo with volume control
- Hunter Douglas blinds

Entryway and Day Head

- Double glass door entry
- Marble entry in foyer
- Overhead mirror and art niche
- Day head with marble vanity and flooring
- Kohler Caxton sink

- Overhead mirror
- Headhunter Royal Flush toilet

Galley

The galley is located forward on the main deck. In the forward part of the galley there is a U Shaped seeing area with table. There is a door for direct access to the side deck. Forward is a stairway that leads down to the crew cabins.

- Kohler stainless steel sink
- Grohe faucet
- Side by side Subzero fridge / freezer
- (2) Gaggenau ovens
- Viking cooktop
- Insinkerator garbage disposal
- Broan trash compactor
- Asko dishwasher
- Sharp stainless steel microwave
- Franke hot water dispenser
- Overhead vent
- built-in dinette settee
- 20" LDC TV
- Speakers
- Crestron WiFi two-way control

Pilothouse

The pilothouse is accessed up the stairway forward of the formal dining area, from either bridge wing or from the sun lounge with is aft of this area. The helm is forward on the centerline with all engine controls, gauges and electronics easy to hand. Visibility is adequate from this station. Aft is a seating area with table. Outboard to port is the desk.

- 24" Wooden wheel
- MTU integrated control head
- DDC/MTU engine instrumentation
- Majilite bulkheads
- Majilite headliner
- Leather covered control console
- (2) Stidd helm chairs
- (2) Wing stations
- 6" Weems and Plath clock/barometer
- Built in chart drawer
- Crestron touch panel

- (2) chart light
- Riche Globe Masters compass
- Speakers
- Carpeting
- Leather settee
- Mahogany settee table with high gloss and stainless steel grab rail
- Windshield (mesh sun screen cover)
- Desk (laptop storage, stool and bookcase above)
- Black laminate counters

Master Stateroom

The master cabin is forward on the main deck and is full-width. His and hers heads are forward with a large separate shower.

- Kind size berth
- Upholstered headboard
- Built-in dresser
- (2) Nightstand lamps
- Recessed lighting
- Bronze mirror on bulkhead above headboard
- Desk with chair
- 42" High definition LCD TV
- Satellite receiver
- Surround sound speaker system with powered sub
- Crestron WiFi 2-way control
- UPS battery backup
- Cedar-lined walk-in closet
- Hunter Douglas blinds
- Chair with ottoman
- Digital safe in walk-in closet
- Full length mirror on wardrobe door, inside door

Master Head

- White Onxy counters
- Lighted make-up mirror on vanity
- Headhunter Royal Flush Hydro Vac toilet
- Shower with Grohe fixtures
- (2) Kohler vintage sinks
- Mirrored medicine cabinets
- Recessed lighting
- Caramel Onyx floor and shower

- Volume control and speakers from main system
- Crestron touch panel

VIP Stateroom - Port

This VIP cabin can be accessed down a curved stairway from the formal dining area to the lower foyer.

- King berth
- upholstered headboard
- Dresser / entertainment center combo
- Nightstands with two drawer storage
- Cedar-lined wardrobe
- Full length mirror on wardrobe door
- Roman shades
- Recessed lighting
- Lamps on nightstands
- Portlights opening with screens

VIP Head - Port

- Headhunter Royal Flush Hydro Vac toilet
- Fameless tempered glass shower with Grohe fixtures
- Stone counters
- Kohler vintage sinks
- Mirror above vanity
- Recessed lighting
- Vanity with lighting
- Portlights with blinds

VIP Stateroom - Starboard

This VIP cabin can be accessed down a curved stairway from the formal dining area to the lower foyer.

- King berth
- Upholstered headboard
- Nightstands with two drawer storage
- Cedar lined wardrobe with full length mirror on door
- Roman shades
- Lamps on nightstands
- Portlights opening with screen

VIP Head - Starboard

- Headhunter Royal Flush Hydro Vac toilet
- Frameless tempered glass shower with Grohe fixtures
- Stone counters
- Kohler vintage sinks
- Mirror above vanity
- Recessed lighting
- Vanity with lighting
- Portlights with blinds

Guest Stateroom - Port

- Twin berths
- Upholstered headboards
- Recessed lighting
- Mirrors on bulkhead above headboard
- 26" High definition LCD TV
- Sat receiver
- Speakers
- Crestron WiFi
- UPS battery backup
- Cedar lined wardrobe
- Full length mirror on wardrobe door
- Fixed Roman shades
- Port lights opening with screen and privacy cover

Guest Head - Port

- Headhunter Royal Flush Hydro Vac toilet
- Frameless shower with tempered glass doors
- Kohler vintage sinks
- Marble counter
- Vanity with lighting
- Grohe fixtures
- Mirror above the vanity
- Recessed lighting

Guest Stateroom - Starboard

- Twin berths

- Recessed lighting
- Mirrors on bulkhead above headboard
- Cedar lined wardrobe
- Full length mirror on wardrobe door
- Fixed Roman shades
- Portlights opening with screen and privacy cover

Guest Head - Starboard

- Headhunter Royal Flush Hydro Vac toilet
- Shower with tempered glass doors
- Marble countertop
- Vanity with lighting
- Grohe fixtures
- Mirror above vanity
- Recessed lighting

Captain / Crew Quarters

This area is accessed from the galley down a stairway to the crews lounge area. There are two cabins forward to port and starboard and an emergency exit from the starboard crew cabin to the chain locker.

Captain's Stateroom

- Custom full size berth with drawers underneath
- Dresser
- Desk with stool
- Bookcase
- Cedar lined wardrobe with dressing mirror inside door
- Duette blinds
- 20" LCED TV (DVD combo)
- Satellite receiver
- Speakers
- Handheld remote to Crestron system
- Recessed lighting

Captain's Head

- Headhunter Royal Flush Hydro Vac toilet

- Shower with Grohe fixtures
- Kohler sink
- Medicine cabinet with mirror
- Recessed lighting
- Solid surface counter

Crew Quarters & Heads

Port (2) Custom twin berths Dresser 15" LCD TV (DVD combo) Satellite receiver Handheld remote Recessed lighting Cedar lined wardrobe with mirror inside door Duette blinds Starboard (2) Custom twin berths Dresser 15" LCD TV (DVD combo) Satellite receiver Handheld remote Recessed lighting Cedar lined wardrobe with mirror inside door Duette blinds Head - Port & Starboard Headhunter Royal Flush Hydro Vac toilet Shower with Grohe fixtures Kohler sink Medicine cabinet with mirror Recessed lighting Solid surface counter

Storage / Utility / Engineer's Quarters

- Located aft of engine room
- 20" LCD TV (DVD combo)
- Satellite receiver
- Speakers
- Handheld remote to control Crestron system
- Double-side refrigerator / freezer
- Custom size berth
- Dresser
- Wardrobe
- head includes vanity, toilet and shower

Crew Lounge

- 23" LDC TV
- Satellite receiver
- DVD / CD player
- Speakers
- Handheld remote to control Crestron system
- Table with built in seating
- Upholstered settee
- Sub-Zero refrigerator / freezer
- Sharp stainless steel microwave
- Stainless sink
- Cabinets and solid surface tops

- Galley forward
- Maytag stacked washer and dryer

Sky Lounge

- Sofa
- Cocktail table
- End table
- (3) chairs
- Ottoman
- Bar with white Onyx top
- Sub-Zero refrigerator
- Hoshizaki ice maker
- Vissani wine cooler
- Game table with chairs
- Built in credenza
- Entertainment center with 52" High Definition Plasma TV
- DVD / CD player
- Satellite receiver
- Surround sound receiver
- Surround sound speaker system with 2 powered subs
- Creston WiFi 2 way control
- UPS battery backup

Fly Bridge

The fly bridge is large, perfect for entertaining and the helm forward on the centerline. Featuring a large bar console with refrigerator, icemaker, BBQ plus built-in stools. This area is also well protected by the hardtop.

- Anchor light
- Deck lighting
- Kahlenberg air horn
- Molded settee with cushions and covers
- (2) Tables
- (2) Sunshade umbrellas with covers
- Sun pad with cushions and covers
- Wet bar with solid surface top
- Sink with hot / cold water
- TV / Phone jacks
- Whirlpool icemaker
- GE refrigerator
- Electri-Chef BBQ

- BBQ stainless steel cover
- (2) Pairs of speakers
- Crestron waterproof handheld remote

Foredeck

- Accessible via sides or steps down from Portuguese bridge
- Circular seating with cushions
- Bow sun lounge with cushions, covers and enclosed storage locker underneath
- Stereo volume control and speakers from salon AMX
- Teak decks
- Ship's bell

Boat Deck

This area is accessed from either the aft deck or from the sun lounge and has good storage for the dinghy, a table and chairs.

- 11 Kw Hot tub with heater
- Built in settee with cushions cover and storage space below
- Sutherland 40" teak cocktail table
- Chocks for tender
- Nautica tender lifting bridle
- Nautical structures davit
- Speakers
- Crestron waterproof handheld remote
- Flagstaff
- Teak decks

Electronics

- B & G Digital depth sounder
- AIS Furuno FA 150
- Simrad Autopilot system AP50
- (3) Elbex hi resolution color/pan/tilt/zoom camera system
- Tellular GSM cellular phone
- Furuno FCV-1200 color video depth sounder
- B & G Gydra system digital instruments
- Transas navisailor electronic charter system
- (2) Furuno Felcom Inmarsat C
- Inmarsat internet connection
- Loud hailer

- Ritchie F600 magnetic ship's compass
- Furuno Navtex NX-700
- (2) Furuno radar
- KVH Fleet Satcom
- Sea Tel Satellite TV antenna X
- M Satellite weather
- ICOM VHF Radio M602
- VSAT System (European)

Electrical

- IntelliSea Model IS-1 Vessel Information and Control VIC System
- Batteries (all AGM type)
- Defrosters
- Chart lights
- Ritchie compass
- Carlisle Finch Searchlight
- (13) Bilge switched monitored
- (19) Heat sensors
- (18) Smoke alarms
- Security system
- Control of A/C supply switching from all available sources
- Tank levels monitored
- Fly bridge grill lid closed alarm
- Battery chargers" (1) Newmar 95amp for the ships system: (1) Newmar 70amp 12V DC ships system; (1) Newmar 40 amp for the main engine starting battery banks (1) Newmar 40amp/12V DC battery charger fro the generator staring battery bank
- (2) 100 amp single phase/three phase shore inlets with Glendinning Cablemaster cord reels at starboard bustle
- Shore power converters
- Crestron - Audio/video distribution controlled by Crestron system though wireless control
- Exterior lighting
- Lighting controls with switched dimmed Crestron automation

Stern

- (2) Maxwell VC 3500# 24V DC Capstan

Bow

- Dual Poole style 270 kg polished stainless steel 400' 5/8 chain for one anchor, 300' for the

other

- 5/8 chrome chain stoppers
- (2) VWC 6000# Maxwell, hydraulic winches anchor chain wash down system

Engines and Mechanical Equipment

- The area is accessed from the forward or aft utility rooms and has full standing head room and very good access to all of the machinery to carry out all service work. Both main engines run well and with her generator can carry the vessel's entire electrical load. For very high loads the generators can be split.
- Twin MTU/DDC 12V4000 engines rated at 2735hp w/4 stations controls, integrated station selection and shifter control with synchronizer Port 2,160; Stbd: 2159
- (2) Northern Lights 65Kw 1800 RPM generators with hydro-elastic mounts and secondary barry temperature, oil pressure and hour meters in distribution panel
- Gen Hours: Stbd 9,092, Port 10,089
- Naiad MultiSea Stabilizers
- 220vAir compressor
- Fuel tanks with 5,086 alloy aluminum with dual fills and standard vents (capacity 9,900 gal)
- American Bow Thruster 16" 50hp Dual prop hydraulic with 4 station controls, PTO from both generators
- Gas tank 100 gal under hatch on swim step
- Fuel monitoring
- Fuel Transfer system
- Fire suppression FM200 system with manual and automatic controls
- Lube oil change system 78-gallon tank with deck fill, 33-gallon lube oil waste tanks with portable extraction pump. Quick connects on all engines
- Rudders Aquamet cast urethane
- Michigan 5-blade propellers
- Dripless rudder bearings with packing boxes
- Exalto pantograph windshield wipers with delay circuits and freshwater wash-downs
- Jastrom digital steering
- Chilled water system air conditioning with air handlers in salon, pilot house, galley and all staterooms, crew areas and bridge deck lounge
- Electric bilge pumps 24v, 13 remote mounted with manual and automatic switches.
- Emergency fixed bilge pump system with (2) electric pumps. 1 1/2 PVC lines to each major compartment with check valves, strainers and priming system.

Plumbing

- (2) Sea Recovery SRC 1800GPD Watermakers (3600 GPD total) upgraded high pressure pumps
- Water tanks are aluminum with interior epoxy coating and an approximate capacity of 1620

gal

- (2) Aqua Pure water filters
- Freshwater system with (2) 220V AC pumps & 24v DC backup pressure pump with pressure tank
- Hot water heater, 120 gallon tank w/ circulating pump
- Hot and cold water shower in swim platform area
- Freshwater wash down with quick disconnects on foredeck, boat deck and swim platform.
- Gray water systems with (3) water transfer boxes fitted with screen, supply and discharge lines for all showers/sinks
- (2) Composite holding tanks with inspection hatch, 240v AC diaphragm type pump w/24V DC backup pump for pump-out (approx. capacity 1360 gal)
- Headhunter black water treatment system with upgraded pumps

Exclusions

The owner's and crew's personal belongings. A detailed list will be provided at the time of sale, upon request.

Исключения

При продаже яхты исключаются личные вещи владельца.

Отказ от ответственности

Компания предоставляет описание судна или яхты добросовестно, но не может гарантировать точность этой информации, а также не ручается за техническое состояние. Покупатель должен проинструктировать своих агентов или оценщиков исследовать представленную информацию более подробно, по собственному желанию. Продажа судна или яхты, изменение цены или снятие с продажи будет происходить без предварительного уведомления.

ФОТОГРАФИИ

Main Salon



Main Salon



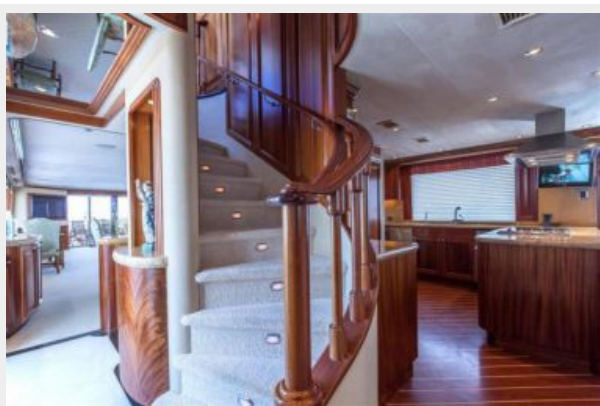
Dining



Aft Deck



Stairwell



Galley



Sky Lounge



Sky Lounge Deck



Jacuzzi



Sky Lounge Deck



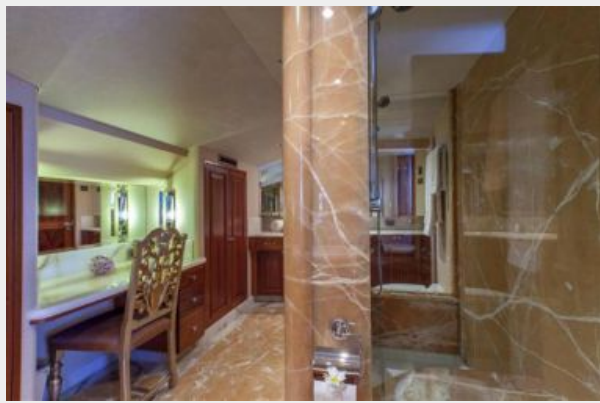
Pilothouse



Master Stateroom



Master Bath



Guest Stateroom



Guest Stateroom



Twin Stateroom



Twin Stateroom



Fly Bridge



Fly Bridge



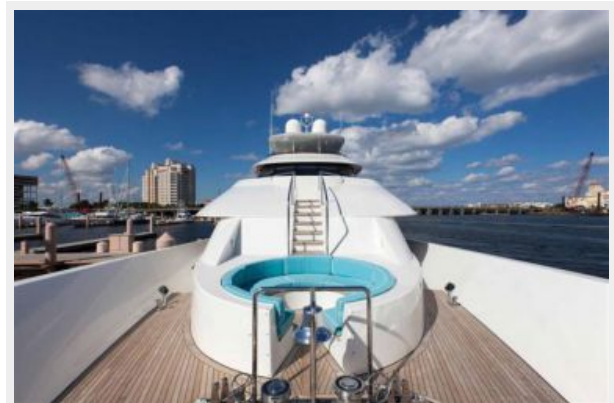
Fly Bridge



Fly Bridge



Bow



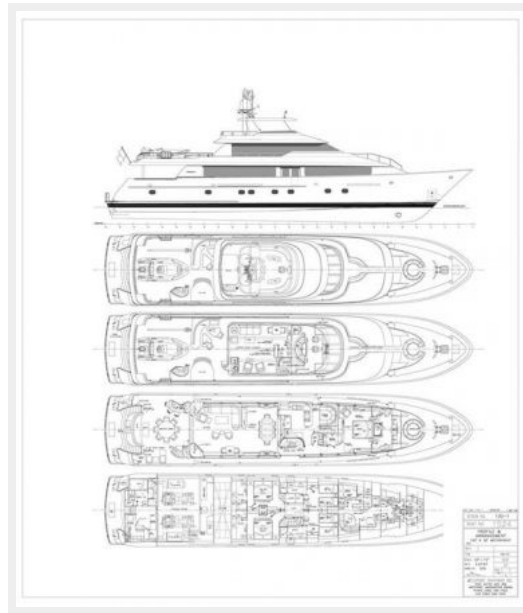
Engine Room



JW 130' Westport



GA



КОНТАКТЫ

Андрей Шестаков (Andrey Shestakov) – ведущий яхтенный брокер отдела продаж яхт и судов компании Shestakov Yacht Sales Inc. Официальный представитель Shestakov Yacht Sales Inc. для русскоговорящих клиентов в центральном офисе компании в Майами/Форт Лодердейл/Флорида/США.

Контактная информация

Email: andrey@shestakovyachtsales.com

Web: shestakovyachtsales.com

Телефоны

Краснодарский край: **+7(918)465-66-44**

США, Майами, Флорида: **+1(954)274-4435**

Время работы

Понедельник – Суббота: **9:00 - 21:00**
EDT

Воскресенье: **Закрыто**

Адрес



Harbour Towne Marina, 850 NE 3rd St,
STE 213, Dania, FL 33004