

SEA DREAMS — PACIFIC MARINER



Судостроитель: PACIFIC MARINER

Год постройки: 2003

Модель: Моторная яхта

Цена: **ЦЕНА ЯХТЫ ПО ЗАПРОСУ**

Местонахождение: United States

Длина общая: 65' 0" (19.81m)

Ширина: 17' 4" (5.28m)

Мин. осадка: 5' 0" (1.52m)

Крейс. скорость: 21 Kts. (24 MPH)

Макс. скорость: 25 Kts. (29 MPH)

Купить **Sea Dreams — PACIFIC MARINER** а также выбрать подходящую вам яхту из нашего каталога яхт вам поможет опытный яхтенный брокер Андрей Шестаков. На сегодняшний день компания **Shestakov Yacht Sales Inc.** имеет большое количество яхт в собственном списке продаж, а также тесно сотрудничает со всеми крупными яхтенными производителями по всему миру.

Для того чтобы купить яхту **Sea Dreams — PACIFIC MARINER** а также проконсультироваться по любому вопросу связанному с покупкой, продажей, чартером яхт позвоните по телефону **+7(918)465-66-44**.

ОГЛАВЛЕНИЕ

ОГЛАВЛЕНИЕ	2
ХАРАКТЕРИСТИКИ	7
Обзор	7
Основная информация	19
Размеры	19
Скорость, вместимость и масса	19
Размещение	19
Корпус и палуба	20
Информация о двигателе	20
ПОДРОБНОЕ ОПИСАНИЕ	21
Accommodations	21
Vessel Walkthrough	21
Aft Deck	22
Salon	22
Dining (Pilothouse Settee)	23
Galley/Laundry	23
Pilothouse	24
Master Stateroom	25
Master Head	26
VIP Stateroom	26
VIP Head	27
Guest Stateroom	27
Guest/Day Head	28
Crew Quarters	28
Flybridge	29
Main Deck	29
Electrical System	30
Sound Package	31

Construction	31
Mechanical Equipment	31
Tender	32
Exclusions	32
Исключения	32
Отказ от ответственности	33
ФОТОГРАФИИ	34
Pacific Mariner Salon	34
Pacific Mariner Salon	34
Pacific Mariner Salon	34
Pacific Mariner Salon	34
Pacific Mariner Salon	34
Pacific Mariner Salon	34
Pacific Mariner Salon	35
Pacific Mariner Salon	35
Pacific Mariner Salon	35
Pacific Mariner Master Stateroom	35
Pacific Mariner Master Stateroom	35
Pacific Mariner Master Stateroom	35
Pacific Mariner Master Stateroom	36
Pacific Mariner Master Stateroom	36
Pacific Mariner Master Stateroom	36
Pacific Mariner Master Stateroom	36
Pacific Mariner Master Stateroom	36
Pacific Mariner Master Stateroom	36
Pacific Mariner Master Bath	37
Pacific Mariner Master Bath	37
Pacific Mariner Hallway	37
Pacific Mariner Guest Stateroom	37

Pacific Mariner Guest Stateroom	37
Pacific Mariner Guest Bath	37
Pacific Mariner VIP Stateroom	38
Pacific Mariner VIP Stateroom	38
Pacific Mariner VIP Stateroom	38
Pacific Mariner VIP Stateroom	38
Pacific Mariner VIP Bath	38
Pacific Mariner VIP Bath	38
Pacific Mariner Exit Stairs	39
Pacific Mariner Video Audio	39
Pacific Mariner Galley	39
Pacific Mariner Galley	39
Pacific Mariner Galley	39
Pacific Mariner Wood Floor	39
Pacific Mariner Galley	40
Pacific Mariner Galley	40
Pacific Mariner Galley	40
Pacific Mariner Galley	40
Pacific Mariner Galley	40
Pacific Mariner Galley	40
Pacific Mariner Galley	40
Pacific Mariner Pilothouse	41
Pacific Mariner Pilothouse	41
Pacific Mariner Pilothouse	41
Pacific Mariner Pilothouse	41
Pacific Mariner Pilothouse	41
Pacific Mariner Pilothouse	41
Pacific Mariner Pilothouse	41
Pacific Mariner Pilothouse	42
Pacific Mariner Pilothouse	42
Pacific Mariner Pilothouse	42

Pacific Mariner Pilothouse	42
Pacific Mariner Pilothouse	42
Pacific Mariner Gauges	42
Pacific Mariner Generator Control	43
Pacific Mariner Electronics	43
Pacific Mariner Bow Thruster	43
Pacific Mariner Stabilizer	43
Pacific Mariner Electric Panel	43
Pacific Mariner Exit Stairs	43
Pacific Mariner Flybridge Compass	44
Pacific Mariner Flybridge	44
Pacific Mariner Flybridge	44
Pacific Mariner Flybridge	44
Pacific Mariner Flybridge	44
Pacific Mariner Flybridge	44
Pacific Mariner Flybridge	45
Pacific Mariner Flybridge	45
Pacific Mariner Flybridge	45
Pacific Mariner Flybridge	45
Pacific Mariner Flybridge	45
Pacific Mariner Flybridge	45
Pacific Mariner Flybridge	45
Pacific Mariner Flybridge	45
Pacific Mariner Flybridge	45
Pacific Mariner Flybridge	46
Pacific Mariner Flybridge	46
Pacific Mariner Flybridge	46
Pacific Mariner Walk Deck	46
Pacific Mariner Pilothouse	46
Pacific Mariner Winch	46
Pacific Mariner Wing Stations	47
Pacific Mariner Profile	47

Pacific Mariner Profile	47
Pacific Mariner Profile	47
Pacific Mariner Profile	47
Pacific Mariner Profile	47
Pacific Mariner Profile	48
Pacific Mariner Profile	48
КОНТАКТЫ	49
Контактная информация	49
Телефоны	49
Время работы	49
Адрес	49

ХАРАКТЕРИСТИКИ

Обзор

Westport Yachts Pacific Mariner 65' the perfect size range for an owner-operator who wants to have the largest boat that is easily manageable by a couple, but small enough to be affordable for many people, both to buy and to operate. These boats exude a sense of luxury while allowing for a wide range of performance, cruising aptitudes, and applications. She was designed by two very talented west coast naval architects. Her hull was designed by a master – William Garden. Garden has been building and designing boats since about 1935 and few people alive know more about boats, both power and sail, than this giant of his craft. The exterior and interior were designed by Greg Marshall, a younger west coast Canadian designer who has many mega yachts to his credit.

"*Sea Dreams*" is the finest 65' Pacific Mariner on the market with extensive electronics, Multi-Sea 2000 stabilizer, and CAT engines. Significant maintenance work done on all running gear and interior upgrades including new "Fabrica" carpeting throughout. She is constantly being upgraded and has many options that are itemized in these specifications.

"*Sea Dreams*" is in excellent condition and seriously for sale. You are encouraged to see her in person...you will not be disappointed!

NOT FOR SALE TO US RESIDENTS WHILE IN US WATERS **Accommodations**

This popular US quality built Motoryacht offers spacious accommodations for six (6) owners and guests in three (3) luxurious en-suite staterooms. In addition, there are two (2) additional (upper/lower) berths located all the way aft (under the aft deck with separate entrance) for crew.

Vessel Walkthrough

Welcome aboard "*Sea Dreams*". Stepping onto the large integrated swim platform aft, we notice the two large deck hatches for storage, a slide out swim ladder, hot & cold shower and multiple safety grab rails. Up two steps to port onto the teak decked aft deck with a built-in upholstered settee aft. There is a large storage under the sole, aft deck engine controls, two capstans to assist dockage, access to the walk around decks, and overhead hatch to the flybridge. From the aft deck through a stainless steel framed sliding door is the entrance to the main salon. A large "L-Shaped" sofa is to port with a hydraulically operated Hi/Low table that allows to convert from a coffee table to formal dining in a few seconds. Across to starboard are two custom chairs and forward is a large cabinet that houses the entertainment system and a full wet bar. One remarkable feature is the large windows and floor to ceiling glass aft bulkhead of the salon for spectacular visibility. Up a few steps to the galley and pilothouse area, this area is also surrounded with large windows for incredible views underway. The galley offers full size stainless steel appliances, abundant storage, easy access to the flybridge and fully open through the pilothouse and large settee. Just forward of the galley, the pilothouse area offers a

large "L-Shaped" raised settee, two "stidd" chairs and sliding doors port and starboard to access the side decks. State-of-the-art electronics for navigation and communications are displayed in a large console forward. Down through the curved stairwell is the access to the day head that doubles as the mid-ship twin berth stateroom en-suite head. Forward a few steps up is the VIP stateroom with an Island berth at center, overhead skylight hatch and a spacious private head to starboard. Going aft in the companionway is the access to the owner's full beam stateroom. The king size berth is at center with built-in drawers under. There is a desk with book shelves and a built-in dresser and makeup desk, as well as, two large cedar lined hanging lockers. The master head features a 5' bathtub with shower, marble countertops, top-of-the-line hardware and Teak & Holly flooring. The flybridge is easily accessed from the interior galley/pilothouse stairwell or from the aft deck with a large triangular table; across is a cabinet housing a refrigerator and a BBQ grill. Forward are two "stidd chairs" and the console with full instrumentation and aft is the "boat deck" with a hydraulic crane for tender or water toys. The separate crew accommodations are located all the way aft (under the aft deck). Access is through a large hatch within the built-in aft deck settee via a staircase easily accessed. The crew area offers two oversized upper/lower twin berths to starboard, a stacked washer/dryer unit, as well as, a 6 cubic foot freezer, sink and storage cabinets and a marine head to port. Access to the full beam, stand up engine room is through a water tight door at center of the crew quarters forward bulk head. The spacious engine compartment offers easy access to all machinery and related systems from the fuel tank with "site gauges" to the freshwater pumps, watermaker, generators, hydraulics, ect. Even a four drawers tool box with a full complement of tools....a mechanics dream!

Aft Deck

The 65' Pacific Mariner has the most versatile and usable aft deck of any yacht in her size range. Through the port aft gate you easily step on to the large fiberglass swim platform with safety hoop railing and spacious Lazarette storage. From the starboard end of the aft deck settee, you enter down a staircase to the crew's quarters, laundry center and engine room.

- (3) Pop-Up cleats to secure water toys
- Integrated slide-out swim ladder
- Stainless steel framed sliding glass door to salon with tinted safety glass and retractable bug screen
- Upholstered lounge with teak table and folding chairs
- Access to laundry, crew quarters and engine room
- Stainless steel handrail with gate
- Fender locker
- Ladder to flybridge
- Docking windlasses port & starboard with foot switches
- Shore power cords port & starboard
- CATV & phone inlet with cord
- Courtesy lighting
- Stainless overhead Halogen lighting
- Fresh water washdown
- Dockside water inlet with pressure valve

Salon

The salon area is beautiful with its rich satin finished teak and earth tones colors scheme and custom fabrics. The salon table rises electronically from coffee table height to formal dining table height. The salon is easily transformed from casual elegance to formal dining in a matter of a few minutes.

- Custom furniture quality sofa with designer covering
- Large drawers under sofa
- Custom camphor high gloss table with electric Hi-Lo and slider feature, converts for dining
- Stainless steel framed sliding door to aft deck w/retractable screen
- Windows, tinted, tempered safety glass
- Custom Hunter Douglass window curtains
- Entertainment center
- 42" Plasma TV
- KVH Tracvision G4 satellite TV antenna
- Sony DSS receiver
- (2) Custom Teak & Leather chairs with table and lamp to Starboard
- VCR — Super VHS high resolution
- Home theater surround sound speaker system w/subwoofer
- Audio video control receiver w/1120 watts per channel
- DVD player
- (5) Disc CD changer
- Niles integrated remote control
- Wet bar with refrigerator, stainless steel sink
- Accent lighting
- Halogen lighting w/dimmer control
- Digital room temperature control panel
- Electric room heater
- Telephone outlet
- Generator control panels
- Inverter control panel
- AC distribution panel

Dining (Pilothouse Settee)

The guest seating is a raised L-shaped dinette with high gloss wood table.

- Custom upholstered settee
- Custom Camphor dining table with high gloss finish
- Large storage under settee
- Electric room heater
- Accent lighting
- Halogen lighting

Galley/Laundry

The fully equipped gourmet galley offers full size stainless steel appliances, Conan countertops, custom flooring, indirect lighting and most important, open views of the exterior and easy access to the flybridge, salon and pilothouse forward.

"Sea Dreams" features a fully equipped gourmet galley which includes:

- Thermadore stainless full size range w/convection oven
- GE stainless refrigerator 22 cu. ft Side-by-Side w/ice and water dispenser
- KitchenAid stainless dishwasher
- GE stainless microwave oven
- Stainless trash compactor
- Satin finished teak cabinets
- Stainless steel double sink
- Insinkerator disposal
- Grohe single lever faucet w/pull out sprayer
- Luxury Teak & Holly flooring
- Conan countertop
- Opening ventilation hatch with screen
- Lazy Susan with pull-out shelves
- (8) Place setting, dishes
- Digital room temperature control panel
- Hunter Douglas custom window blinds
- Halogen lighting
- Accent lighting
- Laundry (located in the Crew Quarters - Aft):
- Whirlpool stacked washer/dryer 120/240 VAC
- (2) Storage cabinets
- Stainless coat hooks
- Fluorescent lighting

Pilothouse

Forward of the "Gourmet Galley" is the open pilothouse with the forward facing leather raised forward of the starboard side sliding door is a concealed exterior "flip-out" engine control station for ease of dockage procedures.

- Caterpillar LCD (MPD) instruments
- ZF Mathers Clear Command controls
- Custom ZF Mathers back-up control system
- Furuno 1953 C/NT 12Kw 24NM NavNet Radar/Chart Plotter with 19000 repeater at fly helm
- Furuno 19000 NavNet display with Furuno BBFF1 Sounder, BBWGPS with WAAS, video

interface card for camera system, interface with GPS/Autopilot/KVH Gyrotrac Salon DDS

- AIS System, which is also integrated to Nobeltec as well as radar
- Simrad AP22 Autopilot (upgraded for ComNav)
- Tellular black box cell phone
- Holding tank level indicator
- 12V power outlet
- Dimmer on overhead lights
- Power assisted hydraulic steering
- Teak rimmed stainless steel steering wheel
- Stidd helm and companion chairs
- Sliding doors port & starboard
- Retractable screens on doors
- Chart light wired lens
- Two chart drawer
- Custom Teak & Holly flooring
- Halogen lighting
- Stairway to lower level accommodations w/accent lighting
- Teak stairs to Flybridge
- Digital room temperature control panel
- Stereo speakers connected to main system with volume control
- Tempered windshield glass with frameless flush design
- Heavy duty windshield wiper/washers w/intermittent operation
- Windshield defog system
- Video camera system, cameras on aft deck and engine room
- Weather channel on Nobeltec
- Computer that runs Nobeltec Admiralty with charts and pictures
- WX Worx — Weather forecast and live radar on screen
- Iridium SAT phone
- Booster for cell phone through cell phone card (no cell phone, needs AT & T card)
- Nobeltec Visual Navigation Suite
- ICOM M127 VHF radio
- Rudder angle indicator
- B&G network digital depth and speed displays
- KVH Gyrotrac Compass
- Naiad Stabilizer controls
- Naiad bow thruster control
- Danforth magnetic compass
- ACR spotlight
- Weather center includes barometer, clock and wind speed
- KVH Trac 50 satellite phone
- Panasonic PBX phone system with cell/satellite/land modem

Master Stateroom

The master suite is full beam. Four large stainless steel portholes bring in lots of daylight. A king

size berth is centerline and an abundant amount of cedar lined drawers, two large hanging lockers, as well as, built-in desk and book shelves makes this stateroom comfortable and practical.

- King size walk around bed w/Ultrasuede bolster
- Custom teak bookshelves
- Custom designer spread and throw pillows
- 27" TV w/VCR connected to satellite system
- Stereo with 12-Disc CD changer
- B&G digital depth sounder repeater
- Telephone outlet
- (2) Cedar-lined, lighted hanging lockers w/full length mirror on doors
- Built-in drawers under berth
- Custom teak desk w/bookshelves, storage and chair
- Upholstered lounge to port
- Digital room temperature control panel
- Electric room heater
- Halogen lighting
- Accent lighting
- (2) Swing arm reading lights
- (4) opening portlights w/screens
- Custom Hunter Douglas blinds

Master Head

Located to starboard forward, this en-suite head features a 5' tub/shower, Teak & Holly flooring and high end hardware, as well as, a large s/s porthole.

- Grohe single lever faucet
- Instant hot water system
- Jet type marine toilet
- Towel storage cabinet
- 5' bathtub with shower
- Pressure balanced shower valve
- Tempered glass shower door
- Mirrored vanity w/storage
- AC outlet inside vanity
- Powered ventilation
- Halogen lighting
- Opening portlight w/screen
- Custom Hunter Douglas blinds
- Custom Teak & Holly flooring
- Corian countertop w/Corian sink

VIP Stateroom

Located forward and a few steps up from the lower deck landing area is the "Queen Size Berth" stateroom. Two large port holes and an overhead hatch makes for a bright daylight open feel.

- Queen size bed with Ultrasuede bolster
- Custom designer spread & throw pillows
- Built-in drawers under berth
- 20" TV & VCR connected to satellite system
- Stereo w/CD player and remote control
- Cedar-lined, lighted hanging locker
- Halogen lighting
- Accent lighting
- (2) Swingarm reading lights
- Telephone
- Digital room temperature control panel
- Electric room heater
- Ventilation hatch above berth with screen & privacy cover
- (2) Opening portlights w/screens
- Custom Hunter Douglas blinds

VIP Head

Located to starboard, this spacious head offers Teak & Holly floor and features an extra large "sunk-in" shower.

- Conan countertop w/Corian sink
- Grohe single lever faucet
- Insta hot water system
- Jet type marine toilet
- Sunken shower with safety glass door
- Pressure balanced shower valve
- Mirrored vanity w/storage
- Powered ventilation
- Air conditioning outlet
- Halogen lighting
- Opening portlight w/screen
- Custom Teak & Holly flooring

Guest Stateroom

Located to port side, this stateroom offers side-by-side twin berths, textured wall covering and custom bed spreads.

- Custom designer spread and throw pillows

- 13" TV & VCR connected to satellite system
- Stereo w/CD player with remote control
- Cedar-lined, lighted hanging locker
- Built-in drawers under berths
- Halogen lighting
- Accent lighting
- Reading lights
- Digital room temperature control pane
- Opening port light with screen
- Custom Hunter Douglas blinds
- Twin size berths

Guest/Day Head

Down from the pilothouse is a full head with a large separate shower that serves as the "day head" as well as the twin stateroom mid-ship private head.

- Powered ventilation
- Halogen lighting
- Opening portlight with screen
- Custom Teak & Holly flooring
- Mirrored vanity and storage
- Custom Teak & Holly flooring
- Mirrored vanity and storage
- Air conditioning outlet
- Powered ventilation
- Halogen lighting
- Opening portlight with screen

Crew Quarters

The crew quarters access is via an oversized hatch within the aft deck settee down through a member and/or captain, the location for the crew allows full privacy and separation, as well as, direct access to all machinery for the crew.

- Reading lights
- Telephone
- Digital room temperature control panel
- Storage under berths
- Electric room heater
- Sink with pull-out sprayer
- Marine head with holding tank
- Holding tank level indicator
- 6 Cu. Ft. freezer

- Large parts storage cabinet
- Access to engine room
- Opening port light with screen
- Extra-long berths

Flybridge

Easy access is via the galley area stairwell through a large hatch/doorway. A large seating with table is to starboard, refrigerator and BBC grill to port. Two "Stidd" chairs forward with the console. The "boat deck" aft has a fully hydraulically operated crane for water toys.

- ZF Mathers Clear Command controls
- Furuno radar repeater
- ComNav autopilot repeater
- ICOM M-59 VHF radio
- Rudder angle indicator
- Bow thruster control
- Engine control switches
- B&G digital depth & speed displays
- Magnetic compass
- Stereo CD player
- Electric BBC grill
- Refrigerator 24VDC
- Spotlight with dual station remote control
- Stidd helm and companion seats
- Hydraulic steering, power assisted
- Simrad AP22 remote autopilot station
- VHF to dash face
- 120V AC outlet under flybridge dash in trim board
- Custom curved windshield with tempered safety glass
- 1500 lb Nautical Structures hydraulic davit with power booming and rotation
- Upholstered L--Shaped lounge with storage under
- Corian table top
- Handrails, stainless steel
- Antenna arch
- Tungsten halogen floodlights
- Courtesy lighting
- Stainless steel steering wheel
- Dimmer on overhead lights
- Access to stairs to pilothouse
- Throw ring in stainless bracket
- Helm seat covers
- Galley hatch cover
- Caterpillar LCD (MPD) instruments

Main Deck

- Kahlenburg horn
- Stainless chocks on aft cleats
- Walk around side decks
- Fuel fills port & starboard
- Water fills port & starboard
- Holding tank pump out fitting
- 3,000 lb. Windlass with warping capstans
- 300' High test chain
- 75 lb CQR anchor
- Stainless steel anchor mount
- Windshield system tempered safety glass frameless flush design
- 316 Stainless steel handrails storage hooks
- Fender locker on Foredeck with stainless
- Sunpad cushion with handrails
- Fresh & sea water wash downs

Electrical System

- Northern Lights 20 KW generator with PTO for thruster
- Northern Lights 12 KW generator
- Heart 2500 Watt inverter \Ai/built-in charger
- Link 2000 inverter control panel
- Isoboost transformer 50 AMP
- Isolation transformers 50 AMP and 30 AMP
- Shore Power inlets: 2-50A 240 Volt & 1-30A 120 Volt
- 120/240 VAC distribution panel with magnetic breakers, backlit labels, digital AC frequency, amp, and voltmeters, and split buss system w/source selector switches and interlocks
- Receptacles, 120 VAC GFCI protected
- 24 VDC distribution panel with magnetic breakers, backlit labels, digital Amp and voltmeters
- 12 VDC electronic system with DC-DC converter, 12 VDC distribution panel, backlit labels, digital amp and voltmeters
- Battery chargers, 12 & 24 VDC
- Bonding system
- 24 VDC Engine Room ventilation system
- 24 VDC fluorescent Engine Room lighting
- 24 VDC navigation lights

- Bilge pumps — 6 w/float switches
- Telephone and CATV inlet
- Courtesy lighting
- Heavy duty battery switches
- Battery paralleling switch
- (2) banks of 80 gel cell batteries
- (2) GRP 27 gel cell batteries for generators
- Wiring, tinned copper with labels

Sound Package

- Underwater engine exhaust
- Underwater discharge Aft Conditioning system
- High density foam cored engine beds
- Soundown 2" double density sound foam barrier in Engine Room
- 3M Thinsulate insulation in living areas
- Sound deadening tiles in strategic areas
- Inline silencers on air conditioning ducts
- Generator sound shields w/sound attenuation kits
- All pumps and motors installed on isolation mounts
- Secondary mufflers on generators w/underwater discharge
- Generators installed on double isolation mounts
- Isolation bulkhead between Master & Guest Staterooms
- Insulation on engine mufflers and piping
- Sound absorbing pads under all carpets

Construction

- Anti-fouling paint
- One piece fully cored unitized deckhouse
- Modified Vinylester resin barrier coat on
- Foam cored fiberglass stringers hull
- (3) Composite structural bulkheads
- Solid fiberglass hull bottom
- Airex foam cored topsides

Mechanical Equipment

Access through a watertight door at centerline forward of the crew quarters, this full beam, stand-up engine room offers easy access to all engines, systems and components for easy service and maintenance.

- Twin Caterpillar 3406E 800 hp electronic diesel engines
- Stainless steel exhaust elbows
- Dual Racor fuel filters for main engines
- Naiad Stabilizers — 4.5 Square foot fins
- Naiad 25hp hydraulic bow thruster
- Power assisted hydraulic steering
- Propellers — 5 blade NibraiNC machined
- Propeller shafts 2.5" 22 HS
- Dripless shaft seals w/crossover plumbing
- Struts — heavy duty bronze w/rubber cutlass bearings
- Cast bronze rudders vat/stainless steel posts
- Generator and main engine sea strainers
- Racor fuel filters for generators
- Oil change system for engines and generators
- Marine Air 60,000 BTU chilled water air conditioning system wireverse cycle heat & soft start system
- 24V fans
- Water system, pressurized 24 VDC
- Two 8" Pop-up cleats at transom corners and one 6" at center
- Water filter system (filters all water coming into the boat)
- Fuel tanks 5083 Aluminum coated with Imron 1/4" thickness
- Seacocks on all underwater thru-hulls
- Automatic fire extinguisher system
- 125 USG FRP holding tank wide& and macerator pump-out
- Sea Recovery Watermaker 800 GPD wfUV filter
- Water tank, 316 L stainless steel
- Instant hot water system
- Water heater, 30 gallons wiengine coolant heat exchanger
- Shower on Aft Deck
- Fresh water washdown on Foredeck and Stern Deck
- Fresh water outlet in Engine Room — hot & cold
- Dockside water connection wipressure reducing valve

Tender

Nautica RIB 13.5 Widebody, Yamaha 50HP 4-stroke High Thrust model with power trim & tilt, Euro console and side seat with walkthrough. (New 2011)

Exclusions

All of the owner's personal belongings. Owner's personal toys, including but not limited jet-skis, tenders, fishing & diving equipment. A detailed list of exclusions will be provided at the time of sale.

Disclaimer

The Company offers the details of this vessel in good faith but cannot guarantee or warrant the accuracy of this information nor warrant the condition of the vessel. A buyer should instruct his agents, or his surveyors, to investigate such details as the buyer desires validated. This vessel is offered subject to prior sale, price change, or withdrawal without notice.

Основная информация

Тип судна: Моторная яхта

Подкатегория: Raised Pilothouse

Модельный год: 2003

Год постройки: 2003

Страна: United States

Размеры

Длина общая: 65' 0" (19.81m)

Ширина: 17' 4" (5.28m)

Мин. осадка: 5' 0" (1.52m)

Скорость, вместимость и масса

Крейс. скорость: 21 Kts. (24 MPH)

Макс. скорость: 25 Kts. (29 MPH)

Водоизмещение: 80000 Pounds

Вместимость воды: 285 Gallons

Вместимость сточного бака: 125 Gallons **Объем топливного бака:** 1100 Gallons

Размещение

Всего кают: 3

Каюты экипажа: 1

Корпус и палуба

Материал корпуса: Composite Fiberglass

Информация о двигателе

Двигатели: 2

Производитель: Caterpillar

Модель: 3406E

Тип двигателя: Inboard

Тип топлива: Diesel

ПОДРОБНОЕ ОПИСАНИЕ

Accommodations

This popular US quality built Motoryacht offers spacious accommodations for six (6) owners and guests in three (3) luxurious en-suite staterooms. In addition, there are two (2) additional (upper/lower) berths located all the way aft (under the aft deck with separate entrance) for crew.

Vessel Walkthrough

Welcome aboard "Sea Dreams". Stepping onto the large integrated swim platform aft, we notice the two large deck hatches for storage, a slide out swim ladder, hot & cold shower and multiple safety grab rails. Up two steps to port onto the teak decked aft deck with a built-in upholstered settee aft. There is a large storage under the sole, aft deck engine controls, two capstans to assist dockage, access to the walk around decks, and overhead hatch to the flybridge. From the aft deck through a stainless steel framed sliding door is the entrance to the main salon. A large "L-Shaped" sofa is to port with a hydraulically operated Hi/Low table that allows to convert from a coffee table to formal dining in a few seconds. Across to starboard are two custom chairs and forward is a large cabinet that houses the entertainment system and a full wet bar. One remarkable feature is the large windows and floor to ceiling glass aft bulkhead of the salon for spectacular visibility. Up a few steps to the galley and pilothouse area, this area is also surrounded with large windows for incredible views underway. The galley offers full size stainless steel appliances, abundant storage, easy access to the flybridge and fully open through the pilothouse and large settee. Just forward of the galley, the pilothouse area offers a large "L-Shaped" raised settee, two "stidd" chairs and sliding doors port and starboard to access the side decks. State-of-the-art electronics for navigation and communications are displayed in a large console forward. Down through the curved stairwell is the access to the day head that doubles as the mid-ship twin berth stateroom en-suite head. Forward a few steps up is the VIP stateroom with an Island berth at center, overhead skylight hatch and a spacious private head to starboard. Going aft in the companionway is the access to the owner's full beam stateroom. The king size berth is at center with built-in drawers under. There is a desk with book shelves and a built-in dresser and makeup desk, as well as, two large cedar lined hanging lockers. The master head features a 5' bathtub with shower, marble countertops, top-of-the-line hardware and Teak & Holly flooring. The flybridge is easily accessed from the interior galley/pilothouse stairwell or from the aft deck with a large triangular table; across is a cabinet housing a refrigerator and a BBC grill. Forward are two "stidd chairs" and the console with full instrumentation and aft is the "boat deck" with a hydraulic crane for tender or water toys. The separate crew accommodations are located all the way aft (under the aft deck). Access is through a large hatch within the built-in aft deck settee via a staircase easily accessed. The crew area offers two oversized upper/lower twin berths to starboard, a stacked washer/dryer unit, as well as, a 6 cubic foot freezer, sink and storage cabinets and a marine head to port. Access to the full beam, stand up engine room is through a water tight door at center of the crew quarters forward bulk head. The spacious engine compartment offers easy access to all machinery and related systems from the fuel tank with "site

gauges" to the freshwater pumps, watermaker, generators, hydraulics, ect. Even a four drawers tool box with a full complement of tools....a mechanics dream!

Aft Deck

The 65' Pacific Mariner has the most versatile and usable aft deck of any yacht in her size range. Through the port aft gate you easily step on to the large fiberglass swim platform with safety hoop railing and spacious Lazarette storage. From the starboard end of the aft deck settee, you enter down a staircase to the crew's quarters, laundry center and engine room.

- (3) Pop-Up cleats to secure water toys
- Integrated slide-out swim ladder
- Stainless steel framed sliding glass door to salon with tinted safety glass and retractable bug screen
- Upholstered lounge with teak table and folding chairs
- Access to laundry, crew quarters and engine room
- Stainless steel handrail with gate
- Fender locker
- Ladder to flybridge
- Docking windlasses port & starboard with foot switches
- Shore power cords port & starboard
- CATV & phone inlet with cord
- Courtesy lighting
- Stainless overhead Halogen lighting
- Fresh water washdown
- Dockside water inlet with pressure valve

Salon

The salon area is beautiful with its rich satin finished teak and earth tones colors scheme and custom fabrics. The salon table rises electronically from coffee table height to formal dining table height. The salon is easily transformed from casual elegance to formal dining in a matter of a few minutes.

- Custom furniture quality sofa with designer covering
- Large drawers under sofa
- Custom camphor high gloss table with electric Hi-Lo and slider feature, converts for dining
- Stainless steel framed sliding door to aft deck w/retractable screen
- Windows, tinted, tempered safety glass
- Custom Hunter Douglass window curtains
- Entertainment center
- 42" Plasma TV
- KVH Tracvision G4 satellite TV antenna

- Sony DSS receiver
- (2) Custom Teak & Leather chairs with table and lamp to Starboard
- VCR — Super VHS high resolution
- Home theater surround sound speaker system w/subwoofer
- Audio video control receiver w/1120 watts per channel
- DVD player
- (5) Disc CD changer
- Niles integrated remote control
- Wet bar with refrigerator, stainless steel sink
- Accent lighting
- Halogen lighting w/dimmer control
- Digital room temperature control panel
- Electric room heater
- Telephone outlet
- Generator control panels
- Inverter control panel
- AC distribution panel

Dining (Pilothouse Settee)

The guest seating is a raised L-shaped dinette with high gloss wood table.

- Custom upholstered settee
- Custom Camphor dining table with high gloss finish
- Large storage under settee
- Electric room heater
- Accent lighting
- Halogen lighting

Galley/Laundry

The fully equipped gourmet galley offers full size stainless steel appliances, Conan countertops, custom flooring, indirect lighting and most important, open views of the exterior and easy access to the flybridge, salon and pilothouse forward.

"Sea Dreams" features a fully equipped gourmet galley which includes:

- Thermadore stainless full size range w/convection oven
- GE stainless refrigerator 22 cu. ft Side-by-Side w/ice and water dispenser
- KitchenAid stainless dishwasher
- GE stainless microwave oven
- Stainless trash compactor
- Satin finished teak cabinets

- Stainless steel double sink
- Insinkerator disposal
- Grohe single lever faucet w/pull out sprayer
- Luxury Teak & Holly flooring
- Conan countertop
- Opening ventilation hatch with screen
- Lazy Susan with pull-out shelves
- (8) Place setting, dishes
- Digital room temperature control panel
- Hunter Douglas custom window blinds
- Halogen lighting
- Accent lighting
- Laundry (located in the Crew Quarters - Aft):
- Whirlpool stacked washer/dryer 120/240 VAC
- (2) Storage cabinets
- Stainless coat hooks
- Fluorescent lighting

Pilothouse

Forward of the "Gourmet Galley" is the open pilothouse with the forward facing leather raised forward of the starboard side sliding door is a concealed exterior "flip-out" engine control station for ease of dockage procedures.

- Caterpillar LCD (MPD) instruments
- ZF Mathers Clear Command controls
- Custom ZF Mathers back-up control system
- Furuno 1953 C/NT 12Kw 24NM NavNet Radar/Chart Plotter with 19000 repeater at fly helm
- Furuno 19000 NavNet display with Furuno BBFF1 Sounder, BBWGPS with WAAS, video interface card for camera system, interface with GPS/AutopilotIKVH Gyrotrac Salon DDS
- AIS System, which is also integrated to Nobeltec as well as radar
- Simrad AP22 Autopilot (upgraded for ComNav)
- Tellular black box cell phone
- Holding tank level indicator
- 12V power outlet
- Dimmer on overhead lights
- Power assisted hydraulic steering
- Teak rimmed stainless steel steering wheel
- Stidd helm and companion chairs
- Sliding doors port & starboard
- Retractable screens on doors
- Chart light wired lens

- Two chart drawer
- Custom Teak & Holly flooring
- Halogen lighting
- Stairway to lower level accommodations w/accent lighting
- Teak stairs to Flybridge
- Digital room temperature control panel
- Stereo speakers connected to main system with volume control
- Tempered windshield glass with frameless flush design
- Heavy duty windshield wiper/washers w/intermittent operation
- Windshield defog system
- Video camera system, cameras on aft deck and engine room
- Weather channel on Nobeltec
- Computer that runs Nobeltec Admiralty with charts and pictures
- WX Worx — Weather forecast and live radar on screen
- Iridium SAT phone
- Booster for cell phone through cell phone card (no cell phone, needs AT & T card)
- Nobeltec Visual Navigation Suite
- ICOM M127 VHF radio
- Rudder angle indicator
- B&G network digital depth and speed displays
- KVH Gyrotrac Compass
- Naiad Stabilizer controls
- Naiad bow thruster control
- Danforth magnetic compass
- ACR spotlight
- Weather center includes barometer, clock and wind speed
- KVH Trac 50 satellite phone
- Panasonic PBX phone system with cell/satellite/land modem

Master Stateroom

The master suite is full beam. Four large stainless steel portholes bring in lots of daylight. A king size berth is centerline and an abundant amount of cedar lined drawers, two large hanging lockers, as well as, built-in desk and book shelves makes this stateroom comfortable and practical.

- King size walk around bed w/Ultrasuede bolster
- Custom teak bookshelves
- Custom designer spread and throw pillows
- 27" TV w/VCR connected to satellite system
- Stereo with 12-Disc CD changer
- B&G digital depth sounder repeater
- Telephone outlet

- (2) Cedar-lined, lighted hanging lockers w/full length mirror on doors
- Built-in drawers under berth
- Custom teak desk w/bookshelves, storage and chair
- Upholstered lounge to port
- Digital room temperature control panel
- Electric room heater
- Halogen lighting
- Accent lighting
- (2) Swing arm reading lights
- (4) opening portlights w/screens
- Custom Hunter Douglas blinds

Master Head

Located to starboard forward, this en-suite head features a 5' tub/shower, Teak & Holly flooring and high end hardware, as well as, a large s/s porthole.

- Grohe single lever faucet
- Instant hot water system
- Jet type marine toilet
- Towel storage cabinet
- 5' bathtub with shower
- Pressure balanced shower valve
- Tempered glass shower door
- Mirrored vanity w/storage
- AC outlet inside vanity
- Powered ventilation
- Halogen lighting
- Opening portlight w/screen
- Custom Hunter Douglas blinds
- Custom Teak & Holly flooring
- Corian countertop w/Corian sink

VIP Stateroom

Located forward and a few steps up from the lower deck landing area is the "Queen Size Berth" stateroom. Two large port holes and an overhead hatch makes for a bright daylight open feel.

- Queen size bed with Ultrasuede bolster
- Custom designer spread & throw pillows
- Built-in drawers under berth
- 20" TV & VCR connected to satellite system
- Stereo w/CD player and remote control

- Cedar-lined, lighted hanging locker
- Halogen lighting
- Accent lighting
- (2) Swingarm reading lights
- Telephone
- Digital room temperature control panel
- Electric room heater
- Ventilation hatch above berth with screen & privacy cover
- (2) Opening portlights w/screens
- Custom Hunter Douglas blinds

VIP Head

Located to starboard, this spacious head offers Teak & Holly floor and features an extra large "sunk-in" shower.

- Conan countertop w/Corian sink
- Grohe single lever faucet
- Insta hot water system
- Jet type marine toilet
- Sunken shower with safety glass door
- Pressure balanced shower valve
- Mirrored vanity w/storage
- Powered ventilation
- Air conditioning outlet
- Halogen lighting
- Opening portlight w/screen
- Custom Teak & Holly flooring

Guest Stateroom

Located to port side, this stateroom offers side-by-side twin berths, textured wall covering and custom bed spreads.

- Custom designer spread and throw pillows
- 13" TV & VCR connected to satellite system
- Stereo w/CD player with remote control
- Cedar-lined, lighted hanging locker
- Built-in drawers under berths
- Halogen lighting
- Accent lighting
- Reading lights

- Digital room temperature control pane
- Opening port light with screen
- Custom Hunter Douglas blinds
- Twin size berths

Guest/Day Head

Down from the pilothouse is a full head with a large separate shower that serves as the "day head" as well as the twin stateroom mid-ship private head.

- Powered ventilation
- Halogen lighting
- Opening portlight with screen
- Custom Teak & Holly flooring
- Mirrored vanity and storage
- Custom Teak & Holly flooring
- Mirrored vanity and storage
- Air conditioning outlet
- Powered ventilation
- Halogen lighting
- Opening portlight with screen

Crew Quarters

The crew quarters access is via an oversized hatch within the aft deck settee down through a member and/or captain, the location for the crew allows full privacy and separation, as well as, direct access to all machinery for the crew.

- Reading lights
- Telephone
- Digital room temperature control panel
- Storage under berths
- Electric room heater
- Sink with pull-out sprayer
- Marine head with holding tank
- Holding tank level indicator
- 6 Cu. Ft. freezer
- Large parts storage cabinet
- Access to engine room
- Opening port light with screen
- Extra-long berths

Flybridge

Easy access is via the galley area stairwell through a large hatch/doorway. A large seating with table is to starboard, refrigerator and BBC grill to port. Two "Stidd" chairs forward with the console. The "boat deck" aft has a fully hydraulically operated crane for water toys.

- ZF Mathers Clear Command controls
- Furuno radar repeater
- ComNav autopilot repeater
- ICOM M-59 VHF radio
- Rudder angle indicator
- Bow thruster control
- Engine control switches
- B&G digital depth & speed displays
- Magnetic compass
- Stereo CD player
- Electric BBC grill
- Refrigerator 24VDC
- Spotlight with dual station remote control
- Stidd helm and companion seats
- Hydraulic steering, power assisted
- Simrad AP22 remote autopilot station
- VHF to dash face
- 120V AC outlet under flybridge dash in trim board
- Custom curved windshield with tempered safety glass
- 1500 lb Nautical Structures hydraulic davit with power booming and rotation
- Upholstered L--Shaped lounge with storage under
- Corian table top
- Handrails, stainless steel
- Antenna arch
- Tungsten halogen floodlights
- Courtesy lighting
- Stainless steel steering wheel
- Dimmer on overhead lights
- Access to stairs to pilothouse
- Throw ring in stainless bracket
- Helm seat covers
- Galley hatch cover
- Caterpillar LCD (MPD) instruments

Main Deck

- Kahlenburg horn

- Stainless chocks on aft cleats
- Walk around side decks
- Fuel fills port & starboard
- Water fills port & starboard
- Holding tank pump out fitting
- 3,000 lb. Windlass with warping capstans
- 300' High test chain
- 75 lb CQR anchor
- Stainless steel anchor mount
- Windshield system tempered safety glass frameless flush design
- 316 Stainless steel handrails storage hooks
- Fender locker on Foredeck with stainless
- Sunpad cushion with handrails
- Fresh & sea water wash downs

Electrical System

- Northern Lights 20 KW generator with PTO for thruster
- Northern Lights 12 KW generator
- Heart 2500 Watt inverter \Ai/built-in charger
- Link 2000 inverter control panel
- Isoboost transformer 50 AMP
- Isolation transformers 50 AMP and 30 AMP
- Shore Power inlets: 2-50A 240 Volt & 1-30A 120 Volt
- 120/240 VAC distribution panel with magnetic breakers, backlit labels, digital AC frequency, amp, and voltmeters, and split buss system w/source selector switches and interlocks
- Receptacles, 120 VAC GFCI protected
- 24 VDC distribution panel with magnetic breakers, backlit labels, digital Amp and voltmeters
- 12 VDC electronic system with DC-DC converter, 12 VDC distribution panel, backlit labels, digital amp and voltmeters
- Battery chargers, 12 & 24 VDC
- Bonding system
- 24 VDC Engine Room ventilation system
- 24 VDC fluorescent Engine Room lighting
- 24 VDC navigation lights
- Bilge pumps — 6 w/float switches
- Telephone and CATV inlet
- Courtesy lighting
- Heavy duty battery switches
- Battery paralleling switch
- (2) banks of 80 gel cell batteries

- (2) GRP 27 gel cell batteries for generators
- Wiring, tinned copper with labels

Sound Package

- Underwater engine exhaust
- Underwater discharge Aft Conditioning system
- High density foam cored engine beds
- Soundown 2" double density sound foam barrier in Engine Room
- 3M Thinsulate insulation in living areas
- Sound deadening tiles in strategic areas
- Inline silencers on air conditioning ducts
- Generator sound shields w/sound attenuation kits
- All pumps and motors installed on isolation mounts
- Secondary mufflers on generators w/underwater discharge
- Generators installed on double isolation mounts
- Isolation bulkhead between Master & Guest Staterooms
- Insulation on engine mufflers and piping
- Sound absorbing pads under all carpets

Construction

- Anti-fouling paint
- One piece fully cored unitized deckhouse
- Modified Vinylester resin barrier coat on
- Foam cored fiberglass stringers hull
- (3) Composite structural bulkheads
- Solid fiberglass hull bottom
- Airex foam cored topsides

Mechanical Equipment

Access through a watertight door at centerline forward of the crew quarters, this full beam, stand-up engine room offers easy access to all engines, systems and components for easy service and maintenance.

- Twin Caterpillar 3406E 800 hp electronic diesel engines
- Stainless steel exhaust elbows
- Dual Racor fuel filters for main engines
- Naiad Stabilizers — 4.5 Square foot fins
- Naiad 25hp hydraulic bow thruster

- Power assisted hydraulic steering
- Propellers — 5 blade NibraiNC machined
- Propeller shafts 2.5" 22 HS
- Dripless shaft seals w/crossover plumbing
- Struts — heavy duty bronze w/rubber cutlass bearings
- Cast bronze rudders w/stainless steel posts
- Generator and main engine sea strainers
- Racor fuel filters for generators
- Oil change system for engines and generators
- Marine Air 60,000 BTU chilled water air conditioning system wireverse cycle heat & soft start system
- 24V fans
- Water system, pressurized 24 VDC
- Two 8" Pop-up cleats at transom corners and one 6" at center
- Water filter system (filters all water coming into the boat)
- Fuel tanks 5083 Aluminum coated with Imron 1/4" thickness
- Seacocks on all underwater thru-hulls
- Automatic fire extinguisher system
- 125 USG FRP holding tank w/ macerator pump-out
- Sea Recovery Watermaker 800 GPD w/UV filter
- Water tank, 316 L stainless steel
- Instant hot water system
- Water heater, 30 gallons w/engine coolant heat exchanger
- Shower on Aft Deck
- Fresh water washdown on Foredeck and Stern Deck
- Fresh water outlet in Engine Room — hot & cold
- Dockside water connection w/pressure reducing valve

Tender

Nautica RIB 13.5 Widebody, Yamaha 50HP 4-stroke High Thrust model with power trim & tilt, Euro console and side seat with walkthrough. (New 2011)

Exclusions

All of the owner's personal belongings. Owner's personal toys, including but not limited jet-skis, tenders, fishing & diving equipment. A detailed list of exclusions will be provided at the time of sale.

Исключения

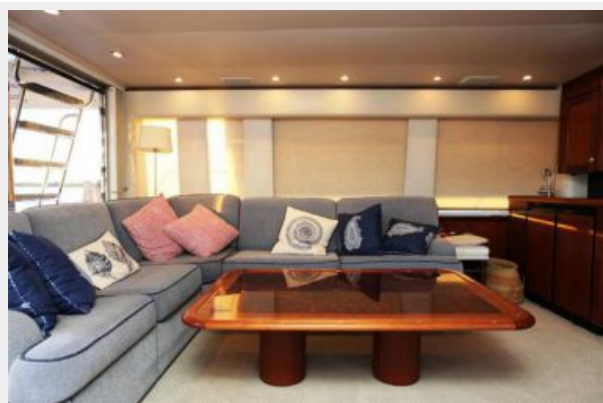
При продаже яхты исключаются личные вещи владельца.

Отказ от ответственности

Компания предоставляет описание судна или яхты добросовестно, но не может гарантировать точность этой информации, а также не ручается за техническое состояние. Покупатель должен проинструктировать своих агентов или оценщиков исследовать представленную информацию более подробно, по собственному желанию. Продажа судна или яхты, изменение цены или снятие с продажи будет происходить без предварительного уведомления.

ФОТОГРАФИИ

Pacific Mariner Salon



Pacific Mariner Salon



Pacific Mariner Salon



Pacific Mariner Salon



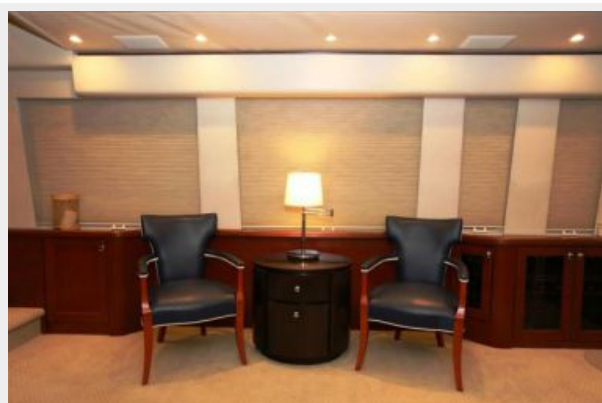
Pacific Mariner Salon



Pacific Mariner Salon



Pacific Mariner Salon



Pacific Mariner Salon



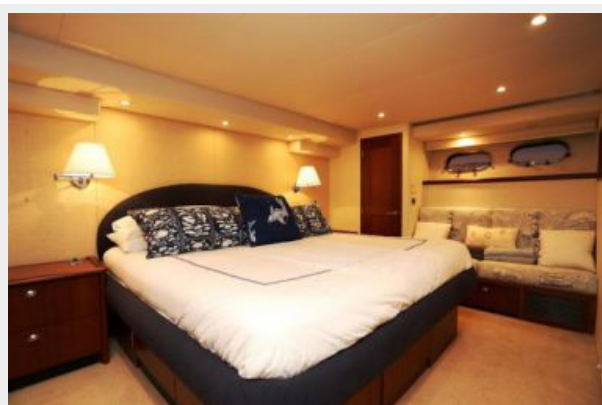
Pacific Mariner Salon



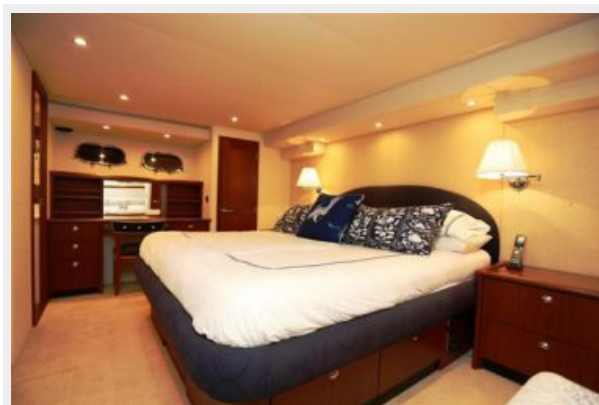
Pacific Mariner Master Stateroom



Pacific Mariner Master Stateroom



Pacific Mariner Master Stateroom



Pacific Mariner Master Stateroom



Pacific Mariner Master Stateroom



Pacific Mariner Master Stateroom



Pacific Mariner Master Stateroom



Pacific Mariner Master Stateroom



Pacific Mariner Master Stateroom



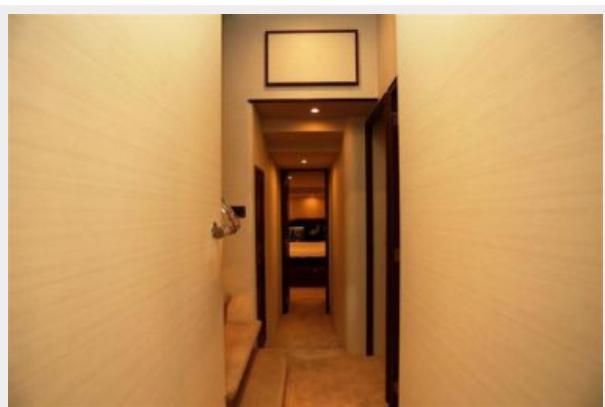
Pacific Mariner Master Bath



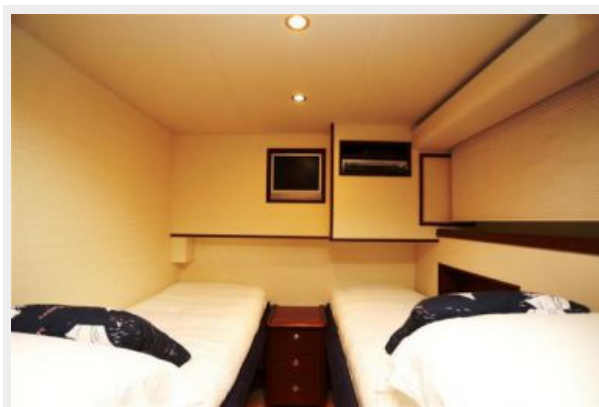
Pacific Mariner Master Bath



Pacific Mariner Hallway



Pacific Mariner Guest Stateroom



Pacific Mariner Guest Stateroom



Pacific Mariner Guest Bath



Pacific Mariner VIP Stateroom



Pacific Mariner VIP Stateroom



Pacific Mariner VIP Stateroom



Pacific Mariner VIP Stateroom



Pacific Mariner VIP Bath



Pacific Mariner VIP Bath



Pacific Mariner Exit Stairs



Pacific Mariner Video Audio



Pacific Mariner Galley



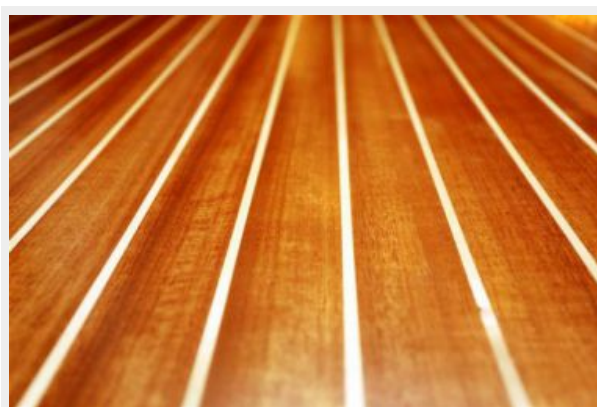
Pacific Mariner Galley



Pacific Mariner Galley



Pacific Mariner Wood Floor



Pacific Mariner Galley



Pacific Mariner Galley



Pacific Mariner Galley



Pacific Mariner Galley



Pacific Mariner Galley



Pacific Mariner Galley



Pacific Mariner Pilothouse



Pacific Mariner Pilothouse



Pacific Mariner Pilothouse



Pacific Mariner Pilothouse



Pacific Mariner Pilothouse



Pacific Mariner Pilothouse



Pacific Mariner Pilothouse



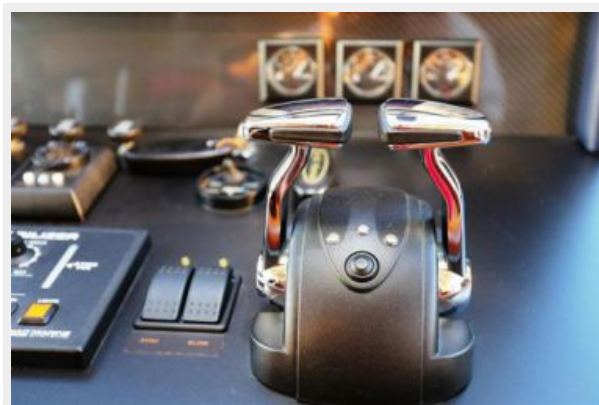
Pacific Mariner Pilothouse



Pacific Mariner Pilothouse



Pacific Mariner Pilothouse



Pacific Mariner Pilothouse



Pacific Mariner Gauges



Pacific Mariner Generator Control



Pacific Mariner Electronics



Pacific Mariner Bow Thruster



Pacific Mariner Stabilizer



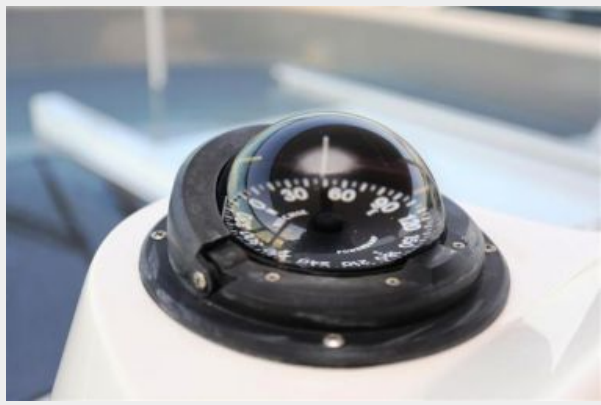
Pacific Mariner Electric Panel



Pacific Mariner Exit Stairs



Pacific Mariner Flybridge Compass



Pacific Mariner Flybridge



Pacific Mariner Flybridge



Pacific Mariner Flybridge



Pacific Mariner Flybridge



Pacific Mariner Flybridge



Pacific Mariner Flybridge



Pacific Mariner Flybridge



Pacific Mariner Flybridge



Pacific Mariner Flybridge



Pacific Mariner Flybridge



Pacific Mariner Flybridge



Pacific Mariner Flybridge



Pacific Mariner Flybridge



Pacific Mariner Flybridge



Pacific Mariner Walk Deck



Pacific Mariner Pilothouse



Pacific Mariner Winch



Pacific Mariner Wing Stations



Pacific Mariner Profile



Pacific Mariner Profile



Pacific Mariner Profile



Pacific Mariner Profile



Pacific Mariner Profile



Pacific Mariner Profile



Pacific Mariner Profile



КОНТАКТЫ

Андрей Шестаков (Andrey Shestakov) – ведущий яхтенный брокер отдела продаж яхт и судов компании Shestakov Yacht Sales Inc. Официальный представитель Shestakov Yacht Sales Inc. для русскоговорящих клиентов в центральном офисе компании в Майами/Форт Лодердейл/Флорида/США.

Контактная информация

Email: andrey@shestakovyachtsales.com

Web: shestakovyachtsales.com

Телефоны

Краснодарский край: **+7(918)465-66-44**

США, Майами, Флорида: **+1(954)274-4435**

Время работы

Понедельник – Суббота: **9:00 - 21:00**
EDT

Воскресенье: **Закрито**

Адрес



Harbour Towne Marina, 850 NE 3rd St,
STE 213, Dania, FL 33004