

OUR TOY — FEADSHIP



Builder: FEADSHIP

Year Built: 1991

Model: Motor Yacht

Price: PRICE ON APPLICATION

Location: United States

LOA: 120' 0" (36.58m)

Beam: 26' 3" (8.00m)

Max Draft: 6' 11" (2.11m)

Cruise Speed: 11 Kts. (13 MPH)

Max Speed: 13 Kts. (15 MPH)

Our experienced yacht broker, Andrey Shestakov, will help you choose and buy a yacht that best suits your needs **OUR TOY — FEADSHIP** from our catalogue. Presently, at Shestakov Yacht Sales Inc., we have a wide variety of yachts available on our sale's list. We also work in close contact with all the big yacht manufacturers from all over the world.

If you would like to buy a yacht **OUR TOY — FEADSHIP** or would like help answering any questions concerning purchasing, selling or chartering a yacht, please call **+1(954)274-4435**

TABLE OF CONTENTS

TABLE OF CONTENTS	2
SPECIFICATIONS	4
Overview	4
Basic Information	4
Dimensions	4
Speed, Capacities and Weight	4
Accommodations	4
Hull and Deck Information	5
Engine Information	5
DETAILED INFORMATION	6
CONSTRUCTION	6
DIMENSIONS	6
MACHINERY	6
COMMUNICATION, NAVIGATION & ENTERTAINMENT SYSTEMS	7
GALLEY & LAUNDRY EQUIPMENT	8
TENDERS & TOYS	9
DECK EQUIPMENT	9
SECURITY, FIRE FIGHTING & SAFETY EQUIPMENT	9
ACCOMMODATIONS	9
REFIT HISTORY	10
EXCLUSIONS	11
Exclusions	11
Disclaimer	11
PHOTOS	12
CONTACTS	15
Contact details	15
Telephones	15
Office hours	15

Address

15

SPECIFICATIONS

Overview

Basic Information

Category: Motor Yacht	Sub Category: Displacement
Model Year: 1991	Year Built: 1991
Refit Year: 2015	Country: United States

Dimensions

LOA: 120' 0" (36.58m)	Beam: 26' 3" (8.00m)
Max Draft: 6' 11" (2.11m)	

Speed, Capacities and Weight

Cruise Speed: 11 Kts. (13 MPH)	Cruise Speed Range: 5000
Max Speed: 13 Kts. (15 MPH)	Gross Tonnage: 294 Pounds
Water Capacity: 1378.97811144 Gallons	Fuel Capacity: 11539.03523136 Gallons

Accommodations

Total Cabins: 4	Total Berths: 8
Sleeps: 8	Total Heads: 4
Crew Cabin: 3	Crew Berths: 6
Crew Sleeps: 6	Crew Heads: 3

Hull and Deck Information

Hull Material: Steel	Deck Material: Teak
Hull Configuration: Full Displacement	Hull Color: White
Hull Designer: De Voogt Naval Architects	Interior Designer: De Voogt Naval Architects

Engine Information

Engines: 2	Manufacturer: MAN
Model: D2848 LE 422	Engine Type: Inboard
Fuel Type: Diesel	

DETAILED INFORMATION

CONSTRUCTION

Built in 1991 by Feadship Holland b.v. Royal Van Lent with steel hull, steel superstructure, and teak decks.

DIMENSIONS

General

Length Overall (L.O.A.):	119.58 feet	(36.45 meters)
Length at Waterline (L.W.L.):	104.79 feet	(31.94 meters)
Beam:	26.24 feet	(8.00 meters)
Draft:	6.89 feet	(2.10 meters)
Tonnage:	294 Gross tons 88 Net tons	

Capacities

Fuel Capacity:	11,540 US Gallons	(43,680 liters)
Water Capacity:	1,379 US Gallons	(5,220 liters)
Watermakers:	HEM 40-4200 16,000 LPD HEM 750-4500 LPD	
Grey Water:	462 US Gallons	(1,750 liters)
Black Water:	433 US Gallons	(1,640 liters)

Speed

Maximum:	13.0 knots
Cruising:	11.0 knots
Economical:	10.5 knots @ 1450 rpm

MACHINERY

Main Engines

Engine Type:	(2) MAN D2848 LE 422, @ 738 Hp each
Propulsion:	Twin Screw
Gearboxes for Main Engines:	ZF BW160S V-Drive
Drive:	Propeller

Generators & Electricity

Output:	120/208 VAC 60 Hz
Generators:	(2) Northern Lights 92Kw generators @ 1,800 rpm
Generator Fuel Consumption:	5 US Gallons p/hr
Shore Power:	Atlas Shorepower Classic

Batteries:	(12) Gel for Main engine/Auxiliary
Air Conditioning:	
Type: Marine Air Systems;	30 tons capacity
Other Machinery	
Watermakers:	HEM 40-4200 16,000 LPD HEM 750-4500 LPD
Trim Tabs/Stabilizers:	Vosper Thornycroft
Bow Thruster:	Johan Dane 50 Kw
Steering System:	C. Plath Electric; Hydraulic with manual/hydraulic emergency backup
Fuel Separator & Filtration:	Alpha Laval MAB 103
Sewage System:	Haman HL-CONT Super Mini with 144 LPD capacity; USCG compliant
Fresh Water System:	Speck BS-25
Bilge Water Filtration:	OMD-21, Decka Hamburg
Oil/Water Separator:	OMD-21, Decka Hamburg

COMMUNICATION, NAVIGATION & ENTERTAINMENT SYSTEMS

Communication Systems

Inmarsat:	C System Fleet 55
VSAT:	SeaTel 4003
Sat TV:	SeaTel
Telephone System:	(2) Ericsson Quad Band Cell - GSM
SSB:	Furuno FS-5000
VHF:	Shipmate with stations (Crew Mess)
Cellular Phone System:	Netcom Wireless
Intercom:	Panasonic KX-T7436
Wi-Fi:	Syrens Marine Wireless Network amplifier

Navigation Systems

Radar:	Furuno S Band Color 2805 Series with 28" monitor Furuno X Band color 2805 Series with 28" monitor
Gyrocompass:	Raytheon/Anschutz STD 22 Type 110-233
Magnetic Compass:	Sestral Observer Mk 3
Auto Pilot:	Anschutz Pilotstar D
Depth Sounder:	Furuno CH 14 - sonar

GPS:	(2) Furuno GP-37
Weather FAX:	JRC NKG-800
Ships Computer:	SuperMicro
Laser Plotter:	Laser plotter was replaced by Transas
Wind/Speed Log:	B & G Hydra 2000
Navtex:	Furuno Navtex NX-500 Receiver
Chart System:	Transas Commercial Navi Sailor 4000
Monitors:	19" color monitor 15" color monitor
GMDSS:	Furuno DSC radio FM 8500 Icom IC-GM 1500 Handheld SEA 7157 DSC receiver
Entertainment System: Individual systems in each cabin	
Salon and Library:	Samsung 32" TV with Sony DVD (multi Zone) Direct TV USA Direct TV LA Sky UK boxes with multi switch I-Pod dock
Master Stateroom:	Samsung 32" TV with Sony DVD (multi Zone) Direct TV USA Direct TV LA Sky UK boxes with multi switch
Guest Staterooms:	Port: Sharp 30" TV Sony DVD (Multi) TV boxes Starboard: Samsung 32" Pioneer DVD player (multi) TV boxes
Exterior:	Boat deck stereo with I-Pod dock

GALLEY & LAUNDRY EQUIPMENT

Main Galley Equipment

Cooking Equipment:	Miele Combiset 4 cooktop and one flat grill Miele Deluxe H-806 17" oven GE Profile microwave
Refrigeration/Freezer:	(2) Built in fridges @ 1m cubed capacity (2) Built in freezer, @ 1 cubic meter capacity each (approx)
Other:	U-Line under counter wine fridge U-Line under counter fridge with built in icemaker Whirlpool Garbage Compactor Espresso machine – Giotto (2) Drip coffee machines

Crew Galley/ Mess Equipment

Cooking Equipment:	Miele Induction 5 burner (2) GE Profile 24" oven GE Profile microwave
Refrigeration/Freezer:	Summit Commercial Products – glass front full size refrigerator (2) Built in freezer, @ 1 cubic meter capacity each approx.

Laundry Equipment:

Main Laundry Equipment:	Miele - Professional PW 6065 "Little Giant" washer Miele Professional PT 7136 "Little Giant" dryer Miele Touchtronic, W1113 (Lower Hallway) Miele Touchtronic T1313 (Lower Hallway)
-------------------------	---

TENDERS & TOYS

- Tenders: Novurania 15-ft. with Yamaha 115 hp outboard Grady White 19-ft. with Yamaha 150 hp outboard, new 2011
- Other: Yamaha GP 1300 Wave runner Yamaha VX 1100 Wave runner Wakeboard, towable tubes etc (2) Sea Bob

DECK EQUIPMENT

- Anchor Windlass System: Steen Electro Yacht Windlass; Type 19, Size 48
- Aft Warping Capstans: (2) Steen Yacht Type 59, Size 44
- Anchors: (2) Pool HCG 315 Kg
- Boat Crane and Davits: (2) Van Driel 1200 kg SWL
- Passerelle: Aquacrane Ocean Systems fully retractable
- Swimming Platform: Integral to hull with ladder
- Side Gangway: Marquipt Sea Stair

SECURITY, FIRE FIGHTING & SAFETY EQUIPMENT

Security Equipment:

- CCTV System: Elbex
- Cameras: (5) rotating cameras with screen (Bridge, Radio Room, Crew Mess and Captain's Cabin)
- Monitors: (3) Tote Vision 15" monitors

Fire Fighting Equipment:

- Fire Control System: Miniera T2000 Fire Detection System
- Fire Extinguishers: Handheld Fire Extinguishers throughout
- Alarms: Simac CSI 8510

Safety Equipment

- Life Rafts: (2) Givens SOLAS 15 Person
- Life Rings: (4) SOLAS Approved
- EPIRBS: (2) McMurdo
- Flares: (24) Pains Wessex
- Medical Equipment: MEDAIRE Full medical kit

ACCOMMODATIONS

AFT DECK: The large aft deck is an area for gathering and enjoyment, with a pedestal custom

teak dining table, service cabinets flanking the entry doors, along with large open areas and aft the stairway to the large swim platform. Aft on the upper deck, built in cabinetry along the forward bulkhead provides wonderful storage and staging counter space, while built in seating groups with tables flank the large on-deck Jacuzzi, encircled by sunpads, commanding views all around; a custom awning offers protected deckspace. From here it is a short walk to the bridge, to follow the progress of the passage into the current port of call. OUR TOY features full walk-around decks on the main and bridge decks, a very rare and desirable feature, offering crew movement around the yacht without the need to enter guest areas. **MAIN SALON:** Step into the salon through the twin French doors from the aft deck, and enter the world of timeless elegance. Fixed seating groupings to both sides of the salon are complimented by armchairs and occasional furnishings, defining social areas throughout. Moving forward, a centerline partition separates the dining area from the salon, both of which are served by the fully equipped bar built into the starboard side. Flawless woodwork and elegant fabrics combine to create an unmatched atmosphere and the feel of a much larger yacht. **MASTER SUITE:** Situated amidships on the accommodations level, the expansive master suite spans the entire beam of OUR TOY and features a centerline King berth with nightstands, desk, sofa, generous storage cabinets, and natural light from large portlights port and starboard. Paneled throughout in rare Satinwood with exquisite inlays, it provides a luxury retreat at day's end. Aft, and to the starboard is the master bathroom, resplendent in hand selected onyx and featuring his and her twin sinks, shower, vanity, and a sunken Jacuzzi tub. To port, a walk in wardrobe worthy of a large home has masses of space behind mirrored doors plus drawer storage. **GUEST SUITES:** Guest areas mirror the opulence of the master suite. To port on the accommodation level is a queen bedded suite, fully catered to with a marble en suite bathroom featuring a Jacuzzi tub and shower. The starboard guest stateroom features a spacious twin cabin, itself served by a dedicated en suite bathroom. **LIBRARY/4th STATEROOM:** Forward on the main deck, OUR TOY features a mahogany paneled library and media area for relaxation and contemplation. The library can then be easily adapted to a proper VIP/fourth guest cabin, served by a full en suite bathroom, when needed for those unexpected overnight guests. **GALLEY:** The comprehensively equipped galley on the main deck to port is resplendent with its cherry cabinetry and woodwork offset beautifully by the limestone flooring tiles. The galley is finished to a very high level, and provides an informal country kitchen type area for the enjoyment of guests should they wish to relax with a snack. NOTE: The Owners of OUR TOY enjoyed having the fully equipped, on-deck galley reserved for themselves, and therefore added a complete additional galley to the crew mess, offering in essence two full galleys with the majority of meal preparation being completed in the lower crew area. The main deck galley has been used primarily as a staging area and for informal meals as a "country kitchen".

REFIT HISTORY

Last paint:	2011 full paint by Newmil Marine
Main Engines:	New 2009
Gearboxes:	Rebuilt 2011 with new cardan shafts and alignments

Generators:	New 2007
A/C system:	New 2009
Rudders:	New bearings 2014
Stabilizers:	Full service 2014
Jacuzzi Tub :	New heater, pump and hoses 2011
Teak:	Boat deck – new teak 2009 Main deck, partial re-caulk, 2011 and 2012
Audio/AV upgrades:	New TV and DVD player in starboard guest cabin, 2013
Soft furnishings:	Kept in pristine condition at all times.
Lloyd's status:	Built to class but not in class; Would take very little to put back into Class.

EXCLUSIONS

- Exclusions include all of Owner's artwork, furnishings, and personal effects -

"All speeds, capacities, consumption, etc. are approximate or estimated; measurements can also be approximate. Specifications are provided for information only and particulars herein obtained from sources believed to be correct, but are not guaranteed. Buyer should instruct his agent and/or surveyor to check all details for accuracy. Offered subject to prior sale, price and/or inventory change, or withdrawal from the market without notification."

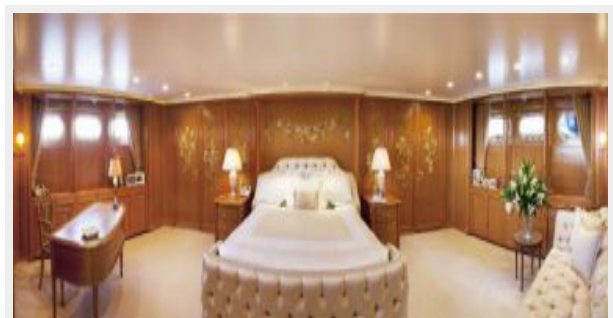
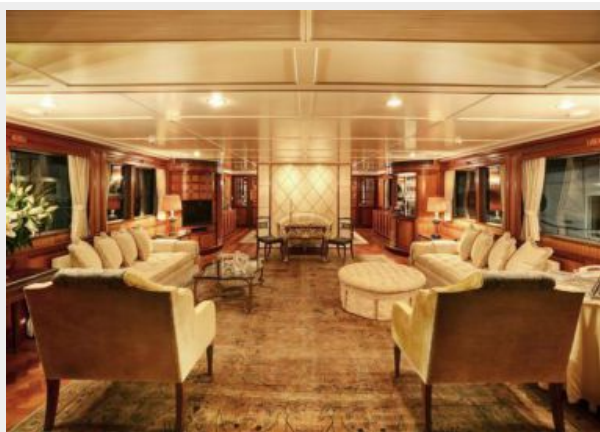
Exclusions

Owner's personal belongings.

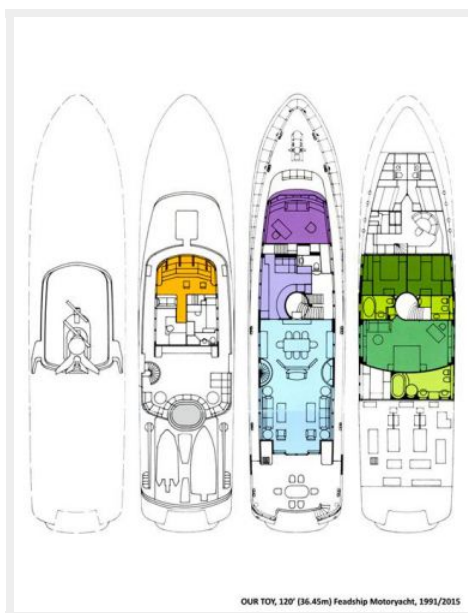
Disclaimer

The Company offers the details of this vessel or yacht in good faith but cannot guarantee or warrant the accuracy of this information nor warrant the condition of the vessel. A buyer should instruct his representatives, agents, or his surveyors, to investigate such details as the buyer desires validated. This vessel or yacht is offered subject to prior sale, price change, or withdrawal without notice.

PHOTOS







CONTACTS

Andrey Shestakov, leading yacht broker of the sales department of Shestakov Yacht Sales Inc. Shestakov Yacht Sales Inc., the official representative of the Miami/Fort Lauderdale FL headquarters.

Contact details

Email:
andrey@shestakovyachtsales.com

Web: shestakovyachtsales.com/en/

Telephones

USA: **+1(954)274-4435**

Office hours

Monday – Saturday: **9:00 - 21:00 EDT**

Sunday: **closed**

Address



Harbour Towne Marina, 850 NE 3rd St,
STE 213, Dania, FL 33004