

IMPULSE — MARLOW



Судостроитель: MARLOW

Год постройки: 2010

Модель: Яхты с центральной консолью

Цена: ЦЕНА ЯХТЫ ПО ЗАПРОСУ

Местонахождение: United States

Длина общая: 37' 0" (11.28m)

Ширина: 11' 8" (3.56m)

Мин. осадка: 2' 3" (0.69m)

Купить Impulse — MARLOW а также выбрать подходящую вам яхту из нашего каталога яхт вам поможет опытный яхтенный брокер Андрей Шестаков. На сегодняшний день компания Shestakov Yacht Sales Inc. имеет большое количество яхт в собственном списке продаж, а также тесно сотрудничает со всеми крупными яхтенными производителями по всему миру.

Для того чтобы купить яхту Impulse — MARLOW а также проконсультироваться по любому вопросу связанному с покупкой, продажей, чартером яхт позвоните по телефону **+7(918)465-66-44**.

ОГЛАВЛЕНИЕ

ОГЛАВЛЕНИЕ	2
ХАРАКТЕРИСТИКИ	4
Основная информация	4
Размеры	4
Скорость, вместимость и масса	4
Размещение	4
Корпус и палуба	4
Информация о двигателе	5
ПОДРОБНОЕ ОПИСАНИЕ	6
Marlow 37 Havana Overview	6
Construction	6
Mechanical & Engine Room	7
Electrical Systems	7
Comfort & Convenience	8
Cockpit/Aft Deck	9
Helm Area	9
Исключения	9
Отказ от ответственности	10
ФОТОГРАФИИ	11
Aft View Looking Forward	11
Main Profile	11
Aft Transom View With Underwater Lights	11
Bow View	11
Aft View From Helm	12
Aft Live Well	12
Aft Storage Locker Closed	12
Aft Storage Locker Open	12
Aft Transom Entry Door	12

Console View	12
Custom Marlow Helm Chair	13
Under Helm Chair Tackle & Fridge	13
Under Helm Chair Fridge	13
Starboard Side Walk Through View	13
Starboard Side Walk Through View From Bow Seating	14
Bow Seating View	14
Bow & Forward Seating	14
Windless	14
Windless Locker	15
Head	15
Cuddy Cabin Over View	15
Cuddy Cabin View	15
Starboard Engine	16
Electric Engine Hatch	16
Port Engine	16
КОНТАКТЫ	17
Контактная информация	17
Телефоны	17
Время работы	17
Адрес	17

ХАРАКТЕРИСТИКИ

Основная информация

Тип судна: Яхты с центральной консолью **Модельный год:** 2010

Год постройки: 2010

Страна: United States

Размеры

Длина общая: 37' 0" (11.28m)

Длина палубы: 37' 0" (11.28m)

Ширина: 11' 8" (3.56m)

Мин. осадка: 2' 3" (0.69m)

Длина привального бруса: 37' 6"
(11.43m)

Скорость, вместимость и масса

Водоизмещение: 12000 Pounds

Вместимость воды: 40 Gallons

Объем топливного бака: 395 Gallons

Размещение

Всего кают: 1

Всего ком. состава: 1

Корпус и палуба

Материал корпуса: Fiberglass

Информация о двигателе

Производитель: Yanmar

Тип двигателя: Inboard

Тип топлива: Diesel

ПОДРОБНОЕ ОПИСАНИЕ

Marlow 37 Havana Overview

The Marlow Prowler Havana is the newest edition to our Prowler Series. This high-tech, high-quality yacht with timeless lines, is perfect for those who want to cruise in style either offshore or inshore. Havana's sleek profile and its flag-blue and oyster-white coatings is stunning to look at. We don't know of another builder who has come close to the quality of material and workmanship that the Prowler Havana represents.

The proprietary RIVAT system of production elevates composite yacht building to a level unknown by all but a few builders worldwide. Prowler Yachts are built at Norsemen Shipyard along side the Marlow Explorer Series. Norsemen Shipyard is an environmentally conscious facility featuring the very best in advanced tools and machinery, computer systems and a talented workforce trained by some of the top master yacht builders in the world in every department.

Construction

- Modified Epoxy Resins
- Resin Infused Components for Maximum Strength
- Engineered Reinforced Fabrics, Custom
- Designed Including Carbon Fiber, Kevlar and
- Specific Axis Orientation of Load Bearing
- Fibers for Maximum Strength.
- Core Cell Foam Core, Adhesive Bedded infused.
- Fiber Reinforced Infused Core Cell Bulkheads
- Foam Cored Furniture Modules
- Tri-Mold Major Component Assembly
- Bootstripe, Painted Awlgrip
- Cabin Soles and Bulkheads, Foam-FRP High Pressure Resin Infused
- Epoxy Barrier Undercoat, Three Coat International System
- Five Year Hull Warranty
- Gelcoated Fiberglass Exterior
- Vacuum Bagged and Modified Epoxy Resin Infused Fiberglass Construction
- Hull Structural Grid, FRP Molded and Foam Cored
- Modified Epoxy Hull Lamination Carbon Fiber, Kevlar™ and Engineered Fabrics in Lamination Schedule
- Molded Upper and Lower Guard with 316L SS Rubrail
- Corecell™ Foam Cored Hull
- Engineered Composite Monocoque Structure
- Molded FRP Grid System Designed by USDDC

Mechanical & Engine Room

- Ball Valve on Thru Hulls Below Water Line, Bronze
- Common Drain System to Eliminate Holes in Hull Sides
- Bilge Pump, Manual
- Drip Pans Under Engines, FRP (Inboard)
- Engine Controls - Mechanicals
- Engine Raw Water Sea StrainerS (Inboard)
- Engine Room Faucet, Fresh Water
- Engine Room Awlgrip Finish Engine Room Varnished Grating
- Engine Room Sound Insulation (Inboard)
- Exhaust System, Sea Water Cooled, with Muffler (Inboard)
- Enclosed Shaft
- Fuel Filters, MA Series Racor Water Separators on Engines and Generator
- Fuel Tank, Fiberglass Baffled with Upper & Lower Automatic Self Closing Valves for Sight Gauges

- Propellers, Nickel-Aluminum-Bronze, Dynamically Balanced, S Class (Inboard)
- Rudders, Cast Bronze or Stainless Steel (Inboard)
- Shafts, Aquamet 22HS (Inboard)
- Shaft Logs with Dripless Shaft Seals (Inboard)
- Steering, Hydraulic
- Struts, Bronze with Rubber Bearings • Sole, Engine Room, Teak Slats (Inboard)
- Marlow Drypoint Engine Ventilation System©

Electrical Systems

- AC/DC Distribution Panels, 12 Volt, 110/220 Volt
- Horn - Electric
- Alternator, Each Engine, 12 Volt
- Alarm Panel, Single Station, with Engine Oil Pressure and Temperature, Bilge Pumps On, Loss of Cooling Water and Engine Room Lights On

- Batteries, with FRP Boxes, Lids and Straps, 2 x 8 D Engine Starting, 2 x 4 D House
- Battery charger, automatic, 12 volt 50 amp
- Battery Condition Indicator
- Battery Switch, Disconnect
- Battery Switch, Emergency Paralleling Switch
- Courtesy Lights, 12 Volt
- Bilge Pumps (3), Automatic, 12 Volt
- Bonding System
- Engine Room Blowers, 12 Volt
- Engine Room Lights, 12 Volt

- Engine Gauges and Instrumentation
- Engine Start/Stop Single Station with Keys
- Fresh Water System, Pressurized, 12 Volt
- Galvanic Isolator
- Helm Outlet, 12 Volt at Each Station
- Holding Tank Discharge Pump 12 Volt
- Indicator Light, Reverse Polarity
- Indicator Light, Holding Tank
- Navigation Lights, 12 Volt
- Outlets, Engine Room & Heads, GFCIProtection, 120 Volt 60 Hz Boats
- Outlets, Engine Room & Heads, ELCBProtection, 220 Volt, 50Hz Boats
- Shore Power Inlet Aft, 30 Amp 120 Volts/60 Hz for US, 32 Amp 230 Volts/50Hz for EuropeanBoats
- Wiring, Marine-Grade Tin-Plated Copper
- TV/Phone Inlet, Aft
- Telephone Outlets

Comfort & Convenience

- Water Tanks FRP, Stainless Steel, Polished 316L
- Stereo/CD Player with Speakers & 10 Disc CD Changer
- Anchor Chain Locker, Self Draining
- Automatic Windlass Hidden in Foredeck Locker
- Anchor Roller Platform, Stainless Steel, Single Stainless Steel Roller
- Anodes, Zinc, Shaft and Hull
- Chocks and Mooring Cleats, Stainless Steel
- Deck Fills: Diesel Fuel/Water and Waste Pump-Out
- Deck Non-Skid, Side & Forward Cabin House
- Deck with Molded Non-Skid
- Engine Room Vents, Marlow Air Demisters (Inboard)
- Flagstaff Holders, Bow and Stern
- Flagstaffs, Teak, Bow and Stern
- Foredeck Lockers
- Fresh Water Faucet, Inside Forward Deck Locker
- Grab Rails, Stainless Steel
- Rubrail, Heavy-Duty 316L Stainless Steel
- Safety Rails, Stainless Steel on Bow
- Skylight Hatch with Screens and Blinds in Cabins
- Toe Rail, Teak
- Trim Tabs
- Vents for Fuel and Water Tanks
- Windlass, Hidden, Chain/Rode 12 Volt

Cockpit/Aft Deck

- Decking, Teak, Where Applicable, EpoxyBonded
- Freeing Ports
- Anchor-Plow-S/S
- Fresh Water Wash-Down, Fitting
- Hatches, Teak, Hinged with Gas Cylinder Lift-Ups
- Scuppers, Stainless Steel
- Soft Patch for Fuel Tank Inspection, Aft
- Swim Ladder, Fold-Up, Stainless Steel with Teak
- Swim Platform, FRP and Teak
- Built In Live Well System
- Refrigerated Fishbox
- Matching Non-Refrigerated Fishbox
- Custom tackle Center
- Saltwater Washdown
- Rod Holders
- Transom Shower with Retractable Hose, Hot/Cold Supply
- Electro-Hydraulic Engine Hatch
- Custom Helm Consoles
- Swim Platform

Helm Area

- Companionway Hatch
- Compass, Ritchie
- Electronic Console, FRP with Teak
- Electronic Installation Area, FRP and Teak
- Custom Hardtop Composite
- Access Hatch, hinged with Gas Strut Gaskets
- Fabric for Exterior Seat Cushions, Vinyl, Closed Cell Foam
- Gloss Varnish 10 Coats
- Helm Seat – Marlow Custom or Pompanette
- Custom Rod and Tackle Storage Center
- Steering Wheel, S/S, Teak Covered Custom
- Speakers, Waterproof

Исключения

При продаже яхты исключаются личные вещи владельца.

Отказ от ответственности

Компания предоставляет описание судна или яхты добросовестно, но не может гарантировать точность этой информации, а также не ручается за техническое состояние. Покупатель должен проинструктировать своих агентов или оценщиков исследовать представленную информацию более подробно, по собственному желанию. Продажа судна или яхты, изменение цены или снятие с продажи будет происходить без предварительного уведомления.

ФОТОГРАФИИ

Main Profile



Aft View Looking Forward



Aft Transom View With Underwater Lights



Bow View



Aft View From Helm



Aft Live Well



Aft Storage Locker Closed



Aft Storage Locker Open



Aft Transom Entry Door



Console View



Custom Marlow Helm Chair



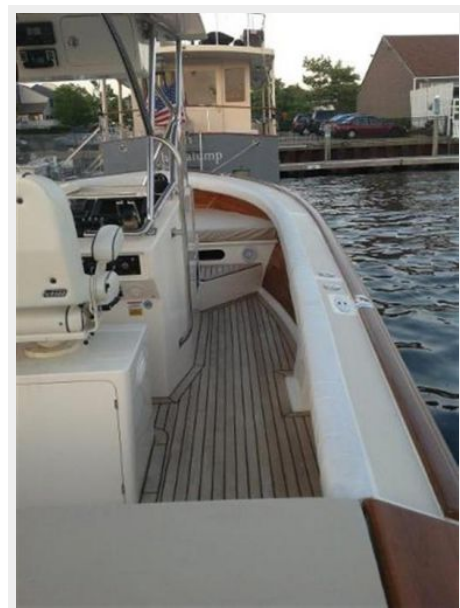
Under Helm Chair Tackle & Fridge



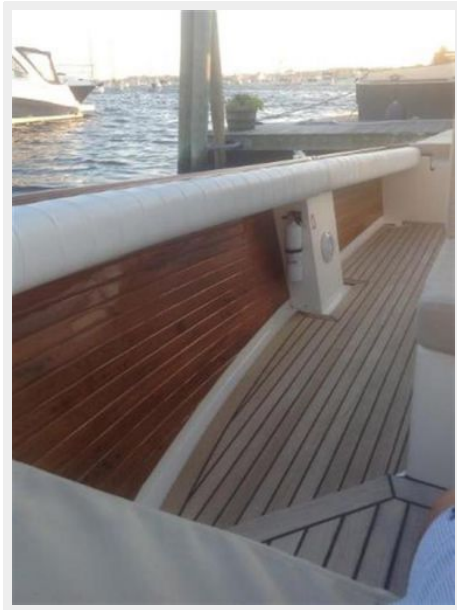
Under Helm Chair Fridge



Starboard Side Walk Through View



Starboard Side Walk Through View From Bow Seating



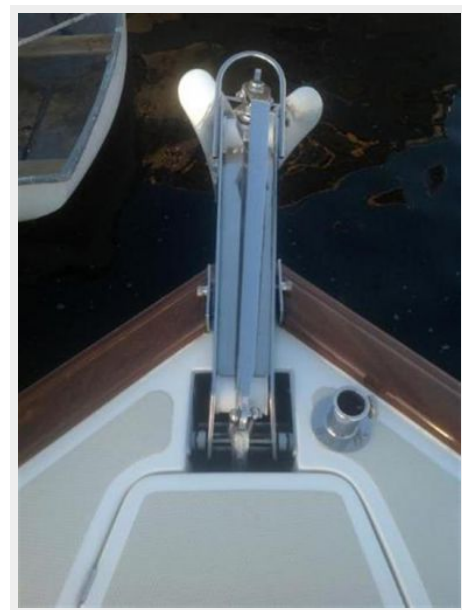
Bow Seating View



Bow & Forward Seating



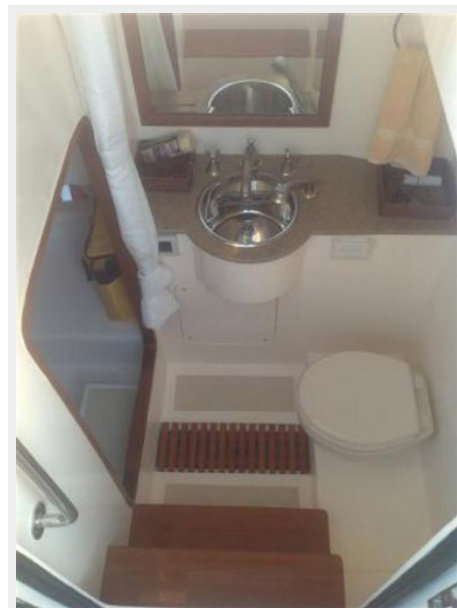
Windless



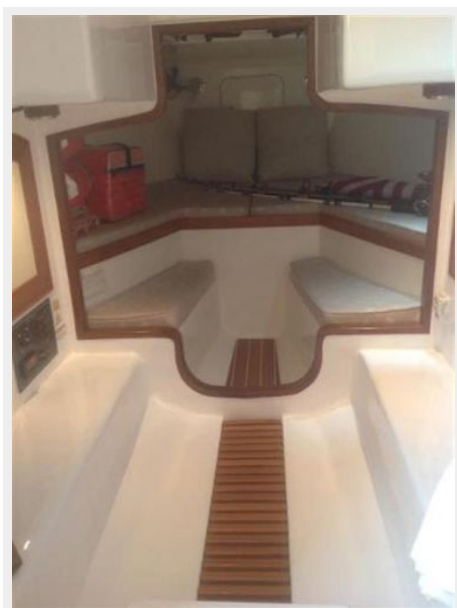
Windless Locker



Head



Cuddy Cabin Over View



Cuddy Cabin View



Electric Engine Hatch



Starboard Engine



Port Engine



КОНТАКТЫ

Андрей Шестаков (Andrey Shestakov) – ведущий яхтенный брокер отдела продаж яхт и судов компании Shestakov Yacht Sales Inc. Официальный представитель Shestakov Yacht Sales Inc. для русскоговорящих клиентов в центральном офисе компании в Майами/Форт Лодердейл/Флорида/США.

Контактная информация

Email: andrey@shestakovyachtsales.com

Web: shestakovyachtsales.com

Телефоны

Краснодарский край: **+7(918)465-66-44**

США, Майами, Флорида: **+1(954)274-4435**

Время работы

Понедельник – Суббота: **9:00 - 21:00**
EDT

Воскресенье: **Закрито**

Адрес



Harbour Towne Marina, 850 NE 3rd St,
STE 213, Dania, FL 33004