

73' 1973 BROWARD PILOTHOUSE MOTOR Y — BROWARD



Судостроитель: BROWARD

Год постройки: 1973

Модель: Моторная яхта

Цена: ЦЕНА ЯХТЫ ПО ЗАПРОСУ

Местонахождение: United States

Длина общая: 73' 0" (22.25m)

Ширина: 18' 3" (5.56m)

Макс. осадка: 5' 6" (1.68m)

Крейс. скорость: 10 Kts. (12 MPH)

Макс. скорость: 12 Kts. (14 MPH)

Купить 73' 1973 Broward Pilothouse Motor Yacht — BROWARD а также выбрать подходящую вам яхту из нашего каталога яхт вам поможет опытный яхтенный брокер Андрей Шестаков. На сегодняшний день компания Shestakov Yacht Sales Inc. имеет большое количество яхт в собственном списке продаж, а также тесно сотрудничает со всеми крупными яхтенными производителями по всему миру.

Для того чтобы купить яхту 73' 1973 Broward Pilothouse Motor Yacht — BROWARD а также проконсультироваться по любому вопросу связанному с покупкой, продажей, чартером яхт позвоните по телефону **+7(918)465-66-44**.

ОГЛАВЛЕНИЕ

ОГЛАВЛЕНИЕ	2
ХАРАКТЕРИСТИКИ	9
Основная информация	9
Размеры	9
Скорость, вместимость и масса	9
Размещение	9
Корпус и палуба	9
Информация о двигателе	10
ПОДРОБНОЕ ОПИСАНИЕ	11
Overview	11
Main deck	11
Guest Staterooms	11
Engine room	12
Исключения	12
Отказ от ответственности	12
ФОТОГРАФИИ	13
Starboard Profile	13
Bow from flybridge	13
Bow facing forward	13
Starboard bow facing forward	13
Bow facing aft	14
Bow facing forward	14
Bow facing aft	14
Bow facing towards port	14
Port aft deck - facing forward	15
Bow facing forward	15
Port facing aft	15
Starboard facing aft from bow	15

Port mid-ship facing aft	16
Port facing aft	16
Port facing forward	16
Port facing forward	16
Sundeck facing foward	16
Sundeck helm	16
Sundeck facing aft	17
Sundeck helm station	17
Sundeck sink	17
Sundeck wet-bar	17
Sundeck refrigerator	18
Sundeck - helm station	18
Sundeck - facing forward	18
Sundeck - facing forward	18
Sundeck - helm station	18
Sundeck - helm station	18
Sundeck throttle control	19
Sundeck throttle control	19
Sundeck - helm station	19
Sundeck facing aft	19
Sundeck port side facing forward	19
Sundeck starboard side facing forward	19
Access stairs from sundeck to aft seating area	20
Stairs from aft deck - tender	20
From starboard side facing port - aft deck	20
Davit - port facing aft	20
Aft deck wet-bar	21
Aft deck	21
Aft deck facing from starboard looking toward port	21

Aft deck - facing forward	21
Aft deck facing from starboard to port	21
Aft deck wet bar	21
Starboard facing forward	22
Aft deck - port side stairs to sundeck	22
Aft deck entrance to Salon	22
Main Salon - facing toward starboard	22
Main Salon - facing toward port	23
Main Salon - facing aft	23
Main Salon - facing forward	23
Dinning area - facing toward starboard	23
Dinning area - facing toward port	23
Dinning area - facing forward	23
Main salon stairs to guest quarters	24
Stairs to guest cabins - Starboard aft area in salon	24
Galley	24
Galley facing toward port	24
Galley	25
Galley facing aft	25
Galley	25
Galley facing aft	25
Galley	25
Galley	25
Galley	26
Starboard - in galley facing forward	26
Pilot house	26
Pilot house	26
Pilot house	26
Pilot house seating	26

Pilot house - hatch to sundeck	27
Pilot house - starboard ignition	27
Pilot house - port ignition	27
Pilot house	27
Pilot house	27
Pilot house	27
Pilot house	28
Pilot house	28
Pilot house - starboard throttle controls	28
Pilot house - port throttle controls	28
Pilot house	28
Pilot house	28
Pilot house facing starboard	29
Stairs looking up from guest area	29
Full beam master stateroom	29
Master stateroom facing aft	29
Master stateroom aft port swim platform access	30
Master stateroom facing aft - starboard side	30
Master stateroom facing forward - starboard side	30
Master stateroom entertainment system	30
Master stateroom heater (looks like a fireplace)	31
Master stateroom storage	31
Master stateroom facing aft from en suite head and shower	31
Master stateroom head & shower	31
Master stateroom head & shower (port side)	32
Master stateroom sink	32
Master stateroom shower	32
Master stateroom - facing aft	32
Guest area - facing forward	33

Guest area - facing forward	33
Guest area - storage	33
Guest stateroom - starboard	33
Guest stateroom - starboard	34
Guest stateroom - starboard	34
Guest stateroom facing forward	34
Guest stateroom - facing aft	34
Guest stateroom facing forward	34
Guest stateroom - head	34
Guest stateroom - head	35
Guest stateroom - head	35
Guest stateroom - port	35
Guest stateroom - head	35
Guest stateroom - port - facing forward	36
Guest stateroom - port	36
Guest stateroom - head & shower	36
Guest stateroom - head & shower	36
Guest stateroom - head & shower	37
Guest stateroom - port	37
Guest area - linen closet	37
Guest area - linen closet	37
Crews quarters - stairs from pilot house	38
Crew quarters - stairs from pilot house	38
Crews quarters - facing forward	38
Crews quarters - facing forward	38
Crews quarters head & shower	39
Crews quarters head & shower	39
Crews quarters - galley / salon	39
Crews quarters - Head & shower	39

Crews quarters -galley/salon	40
Crews quarters - galley/salon	40
Crews quarters - galley	40
Captains quarters - port side	40
Crews quarters - head & shower	41
Crews quarters - forward 'V' berth	41
Captains quarters - port side	41
Crews quarters - forward 'V' berth	41
Engine room	41
Engine room	41
Engine room	42
Engine room	42
Engine room	42
Engine room	42
Engine room	42
Engine room	43
Engine room	43
Engine Room - 30kw Northern Lights GenSet	43
Engine room	43
Engine room	44
Engine room - water maker	44
Engine room - control panel	44
Engine room	44
Engine room - fresh water system	45
Engine room - 30kw Northern Lights GenSet	45
Engine room	45
Engine room	45
Engine room - eco smart hot water heater	45
Engine room - 30kw Northern Lights GenSet	45
Engine room - 20 kw Northern Lights GenSet	46

Engine room - control panel	46
Engine room	46
Engine room	46
Engine room	46
Engine room	46
Aft swim platform	47
Swim platform	47
Broward	47
Port profile	47
КОНТАКТЫ	48
Контактная информация	48
Телефоны	48
Время работы	48
Адрес	48

ХАРАКТЕРИСТИКИ

Основная информация

Тип судна: Моторная яхта

Подкатегория: Старинные яхты

Модельный год: 1973

Год постройки: 1973

Страна: United States

Размеры

Длина общая: 73' 0" (22.25m)

Ширина: 18' 3" (5.56m)

Макс. осадка: 5' 6" (1.68m)

Скорость, вместимость и масса

Крейс. скорость: 10 Kts. (12 MPH)

Макс. скорость: 12 Kts. (14 MPH)

Вместимость воды: 550 Gallons

Вместимость сточного бака: 75 Gallons

Объем топливного бака: 1200 Gallons

Размещение

Всего кают: 5

Всего коек: 10

Всего ком. состава: 4

Корпус и палуба

Материал корпуса: Wood

Информация о двигателе

Двигатели: 2

Производитель: Detroit Diesel

Модель: 12V71N

ПОДРОБНОЕ ОПИСАНИЕ

Overview

Christina Tamar is a distinctly beautiful Classid Broward Motor Yacht.

In current and previous ownership she has benefitted with new teak decks, re-wiring, and engine room refurbishing.

In 1994, nearly a million dollars were spent on a refit including two new Northern Lights generators one 30 kw and one 20 kw. A sundeck with seperate helm station and a large entertaining wet-bar were also added.

She was purchased by her current owner in 1998 and Christina Tamar shows the love and care of that a Classic Motor Yacht of her age deserves.

Main deck

She has a large bow with a bench seat in front of her pilot house for guests to enjoy a little privacy and sun.

Continuing aft past port and starboard wheelhouse doors you find yourself on the beautiful aft deck with generous seating, a gorgeous wetbar, and all the comforts of home.

Her aft deck spiral stair case leads you to the oasis above. The sundeck, added in 1994, fits her character perfectly. There is ample seating, sun chairs, a well appointed wet-bar and a helm station with hers and his captains chairs. Her Boston Whaler tender sits aft of the beautiful sun deck.

Guest Staterooms

From a stairway entrance in the starboard main salon, you come down to the master stateroom and two guest staterooms.

The full beam master stateroom is aft, and includes a queen sized berth, generous storage, twin wardrobes, Flat Screen LCD TV with sound system, and ensuite head and shower. From the roomy walk in port aft closet, you can access the swim platform through a water tight access door. Convientally, there is a shower for one to rinse off on the swim platform.

Forward to port is a guest stateroom with twin lower berths, cedar lined hanging lockers, ensuite head and large shower.

Opposite to starboard is the second guest stateroom with fixed lower berths and a recessed

upper berth, beautifully trimmed cabinets, cedar lined closet and ensuite head.

Engine room

Main engines

Twin Detroit Diesel 12V71N's

Port engine freshly and fully rebuilt

Starboard engine in great shape with 4173 hours

New risers in 2009

New 32 volt batteries (2013)

New 12 volt batteries (2013)

New fresh water system (2013)

20kw Generator Lights - 2526 hours (new in 1994)

30kw Northern Lights Generator - 2705 hours (new in 1994)

Stainless Steel fuel tanks (new in 1994)

Исключения

При продаже яхты исключаются личные вещи владельца.

Отказ от ответственности

Компания предоставляет описание судна или яхты добросовестно, но не может гарантировать точность этой информации, а также не ручается за техническое состояние. Покупатель должен проинструктировать своих агентов или оценщиков исследовать представленную информацию более подробно, по собственному желанию. Продажа судна или яхты, изменение цены или снятие с продажи будет происходить без предварительного уведомления.

ФОТОГРАФИИ

Starboard Profile



Bow from flybridge



Bow facing forward



Starboard bow facing forward



Bow facing forward



Bow facing aft



Bow facing aft

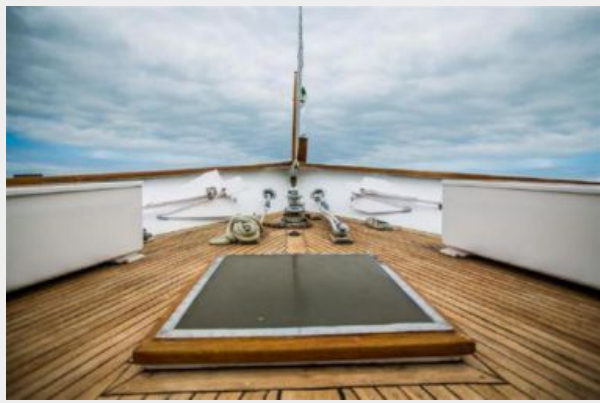


Bow facing towards port



Port aft deck - facing forward

Bow facing forward



Port facing aft

Starboard facing aft from bow



Port mid-ship facing aft



Port facing aft



Port facing forward



Port facing forward



Sundeck facing foward



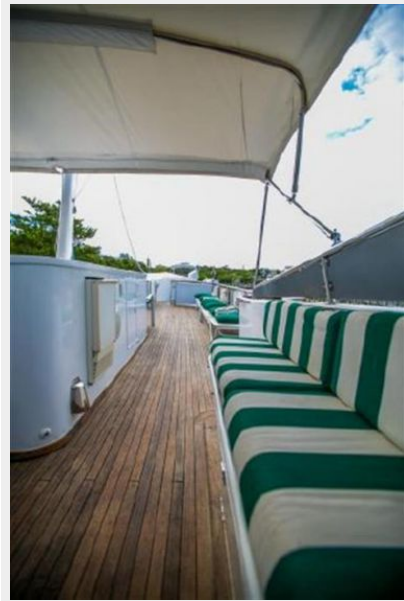
Sundeck helm



Sundeck helm station



Sundeck facing aft



Sundeck wet-bar



Sundeck sink



Sundeck refrigerator



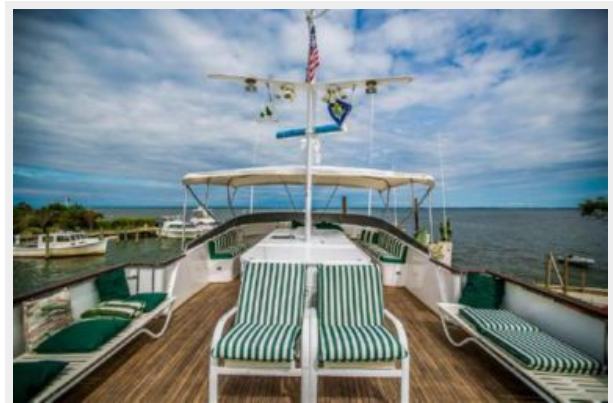
Sundeck - helm station



Sundeck - facing forward



Sundeck - facing forward



Sundeck - helm station



Sundeck - helm station



Sundeck throttle control



Sundeck throttle control



Sundeck - helm station



Sundeck facing aft



Sundeck port side facing forward



Sundeck starboard side facing forward



Access stairs from sundeck to aft seating area

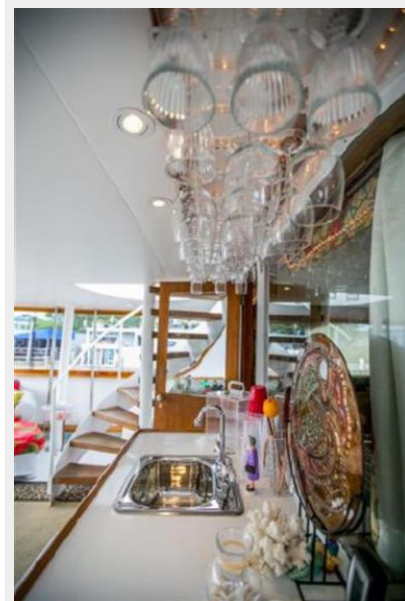


Stairs from aft deck - tender



From starboard side facing port - aft deck

Davit - port facing aft



Aft deck wet-bar



Aft deck



Aft deck facing from starboard looking toward port



Aft deck - facing forward



Aft deck facing from starboard to port



Aft deck wet bar



Starboard facing forward



Aft deck - port side stairs to sundeck



Aft deck entrance to Salon



Main Salon - facing toward starboard



Main Salon - facing toward port



Main Salon - facing aft



Main Salon - facing forward



Dinning area - facing toward starboard



Dinning area - facing toward port

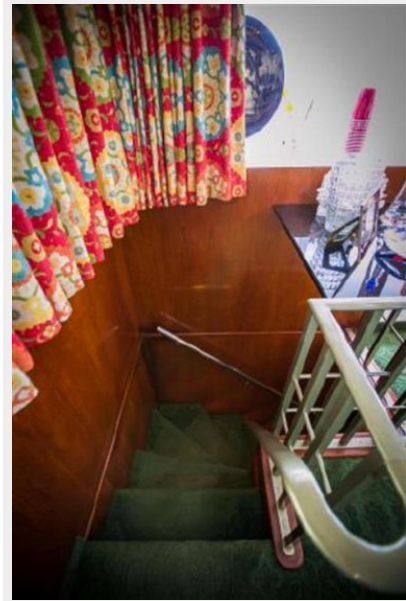
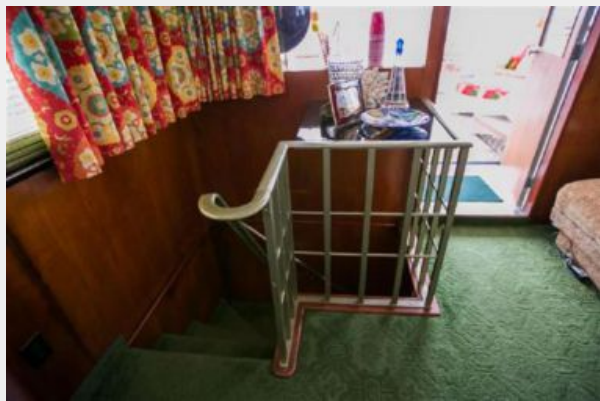


Dinning area - facing forward



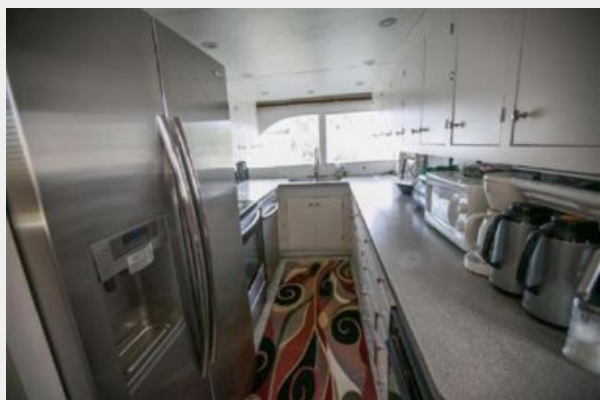
Main salon stairs to guest quarters

Stairs to guest cabins - Starboard aft area in salon



Galley

Galley facing toward port



Galley facing aft



Galley



Galley



Galley facing aft



Galley



Galley



Galley



Starboard - in galley facing forward



Pilot house



Pilot house



Pilot house



Pilot house seating



Pilot house - hatch to sundeck



Pilot house - starboard ignition



Pilot house - port ignition



Pilot house



Pilot house



Pilot house



Pilot house



Pilot house



Pilot house - starboard throttle controls



Pilot house - port throttle controls



Pilot house



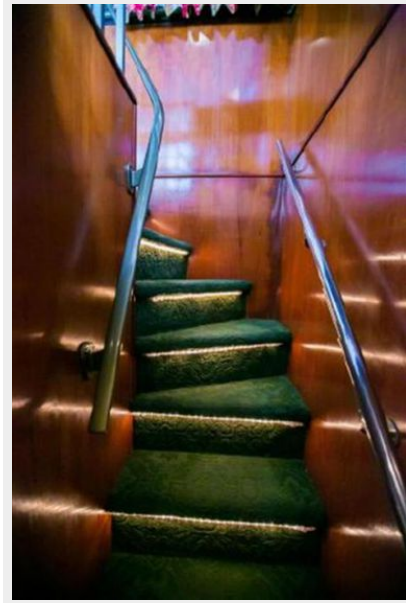
Pilot house



Pilot house facing starboard



Stairs looking up from guest area



Full beam master stateroom



Master stateroom facing aft



Master stateroom facing aft - starboard side



Master stateroom aft port swim platform access



Master stateroom facing forward - starboard side



Master stateroom entertainment system



Master stateroom heater (looks like a fireplace)



Master stateroom storage



Master stateroom facing aft from en suite head and shower



Master stateroom head & shower



Master stateroom head & shower (port side)



Master stateroom sink



Master stateroom shower



Master stateroom - facing aft



Guest area - facing forward



Guest area - facing forward



Guest area - storage



Guest stateroom - starboard



Guest stateroom - starboard



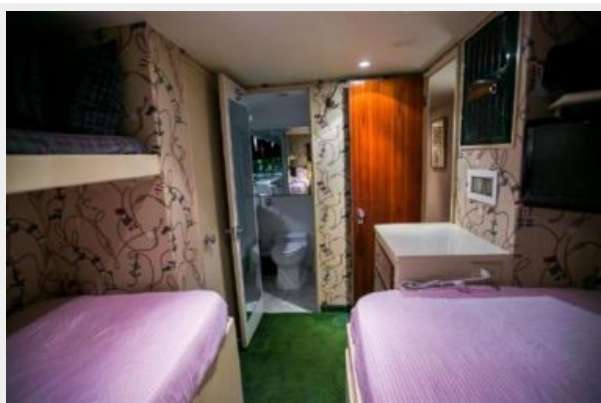
Guest stateroom - starboard



Guest stateroom facing forward



Guest stateroom - facing aft



Guest stateroom facing forward



Guest stateroom - head



Guest stateroom - head



Guest stateroom - head



Guest stateroom - head

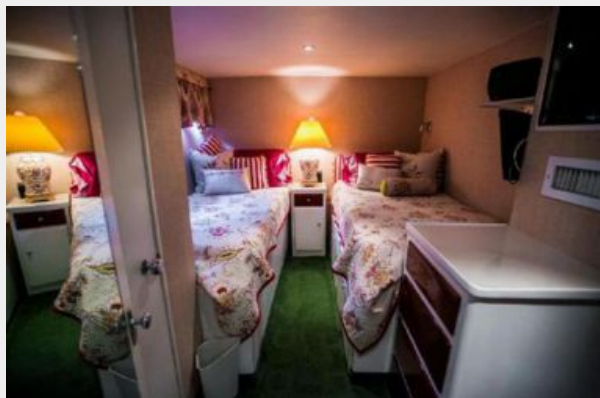


Guest stateroom - port



Guest stateroom - port - facing forward

Guest stateroom - port



Guest stateroom - head & shower

Guest stateroom - head & shower



Guest stateroom - head & shower



Guest stateroom - port



Guest area - linen closet

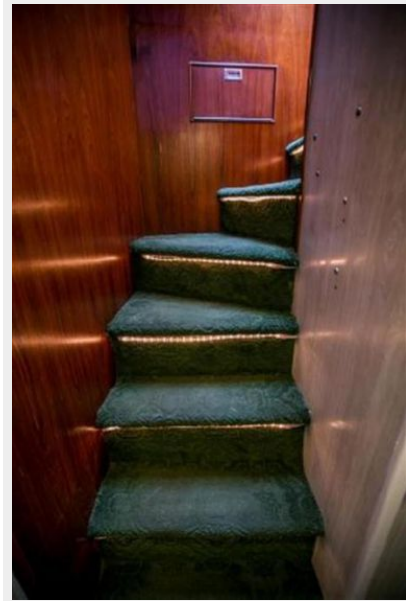
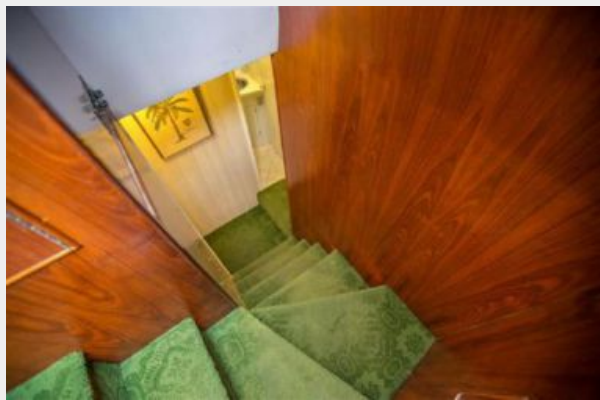


Guest area - linen closet



Crews quarters - stairs from pilot house

Crew quarters - stairs from pilot house



Crews quarters - facing forward



Crews quarters - facing forward



Crews quarters head & shower



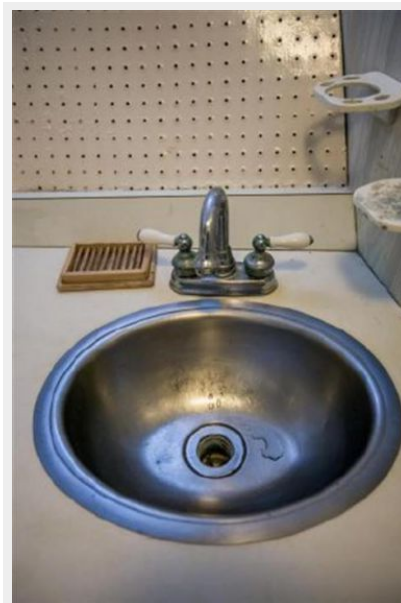
Crews quarters head & shower



Crews quarters - galley / salon



Crews quarters - Head & shower



Crews quarters -galley/salon



Crews quarters - galley/salon



Crews quarters - galley



Captains quarters - port side



Crews quarters - forward 'V' berth



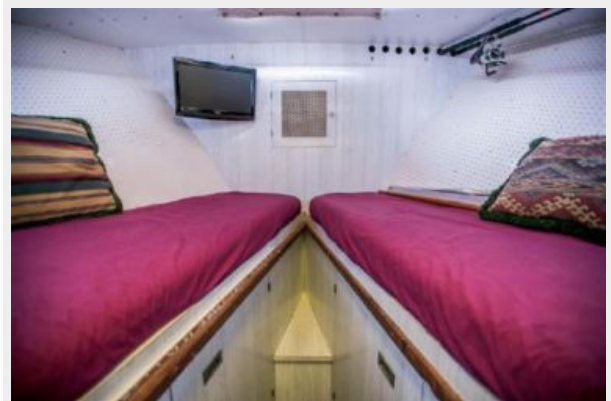
Crews quarters - head & shower



Captains quarters - port side



Crews quarters - forward 'V' berth



Engine room



Engine room



Engine room



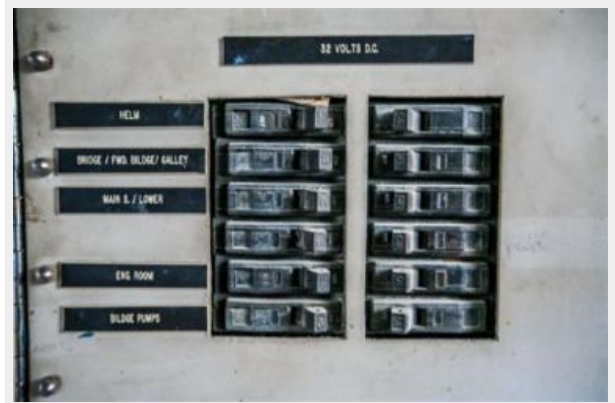
Engine room



Engine room



Engine room



Engine room



Engine room



Engine Room - 30kw Northern Lights GenSet

Engine room



Engine room



Engine room - water maker



Engine room - control panel

Engine room



Engine room - fresh water system



Engine room - 30kw Northern Lights GenSet



Engine room

Engine room



Engine room - eco smart hot water heater



Engine room - 30kw Northern Lights GenSet



Engine room - 20 kw Northern Lights GenSet



Engine room - control panel



Engine room



Engine room



Engine room



Engine room



Aft swim platform



Swim platform



Broward



Port profile



КОНТАКТЫ

Андрей Шестаков (Andrey Shestakov) – ведущий яхтенный брокер отдела продаж яхт и судов компании Shestakov Yacht Sales Inc. Официальный представитель Shestakov Yacht Sales Inc. для русскоговорящих клиентов в центральном офисе компании в Майами/Форт Лодердейл/Флорида/США.

Контактная информация

Email: andrey@shestakovyachtsales.com

Web: shestakovyachtsales.com

Телефоны

Краснодарский край: **+7(918)465-66-44**

США, Майами, Флорида: **+1(954)274-4435**

Время работы

Понедельник – Суббота: **9:00 - 21:00**
EDT

Воскресенье: **Закрито**

Адрес



Harbour Towne Marina, 850 NE 3rd St,
STE 213, Dania, FL 33004