

## SILENT PARTNER — VIKING



**Builder:** VIKING

**Year Built:** 2000

**Model:** Sport Fisherman

**Price:** PRICE ON APPLICATION

**Location:** United States

**LOA:** 72' 0" (21.95m)

**Beam:** 19' 4" (5.89m)

**Max Draft:** 5' 10" (1.78m)

Our experienced yacht broker, Andrey Shestakov, will help you choose and buy a yacht that best suits your needs **Silent Partner — VIKING** from our catalogue. Presently, at Shestakov Yacht Sales Inc., we have a wide variety of yachts available on our sale's list. We also work in close contact with all the big yacht manufacturers from all over the world.

If you would like to buy a yacht **Silent Partner — VIKING** or would like help answering any questions concerning purchasing, selling or chartering a yacht, please call **+1(954)274-4435**

---

# TABLE OF CONTENTS

---

TABLE OF CONTENTS	2
SPECIFICATIONS	3
Overview	3
Basic Information	3
Dimensions	4
Speed, Capacities and Weight	4
Accommodations	4
Hull and Deck Information	4
Engine Information	4
PHOTOS	5
CONTACTS	16
Contact details	16
Telephones	16
Office hours	16
Address	16

---

# SPECIFICATIONS

---

## Overview

---

The 2000 72' Viking Enclosed Fly Bridge "Silent Partner" was built with the optional third fuel tank bringing total fuel up to 2,850 gallons. An additional water tank was added for a total of 350 gallons.

Also please note: In July 2008 the boat was painted with Dupont Imron.

The owner has installed a Detroit Diesel engine interface system which displays on the flybridge computer. This system analyzes all engine parameters while underway and can detect and diagnose any malfunctions. It is similar to the system Detroit Diesel technicians use in the field.

She stands tallest amongst pedigree enclosed bridge sport fish vessels of her vintage. She boasts a 4 stateroom, 4 head layout with a full beam master stateroom and day head located in the forward part of the salon. Along with her interior comforts, the cockpit is equipped with a 216 square foot of workable space, flush with live wells, food and bait freezers, tackle and gear storage. With all of the action going on in the lower cockpit, a spectator has an unobstructed view of the action while sitting attentively and comfortably at the mezzanine deck.

After a good day fishing or relaxing, passengers can sit in comfort upstairs in the enclosed bridge with a spiral staircase, a raised lounge providing panoramic views underway or at anchor, a wet bar and entertainment system. Getting to your next port of call is no problem with "Silent Partner", her engine room is a masterpiece of engineering that allows plenty of room to move around and in-between the MTU 1800 hp engines.

The vessel shows beautifully! A/C's just serviced.

---

## Basic Information

---

**Category:** Sport Fisherman

**Sub Category:** Sport Fisherman

**Model Year:** 2000

**Year Built:** 2000

**Country:** United States

---

## Dimensions

---

**LOA:** 72' 0" (21.95m)

**Beam:** 19' 4" (5.89m)

**Max Draft:** 5' 10" (1.78m)

---

## Speed, Capacities and Weight

---

**Displacement:** 120000 Pounds

**Water Capacity:** 350 Gallons

**Holding Tank:** 60 Gallons

**Fuel Capacity:** 2859 Gallons

---

## Accommodations

---

**Total Cabins:** 4

---

## Hull and Deck Information

---

**Hull Material:** Fiberglass

---

## Engine Information

---

**Engines:** 2

**Manufacturer:** MTU

**Model:** 2000 Series

**Engine Type:** Inboard

**Fuel Type:** Diesel

# PHOTOS

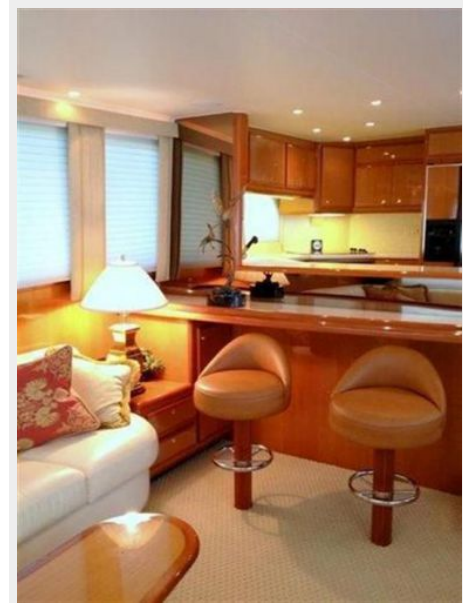
















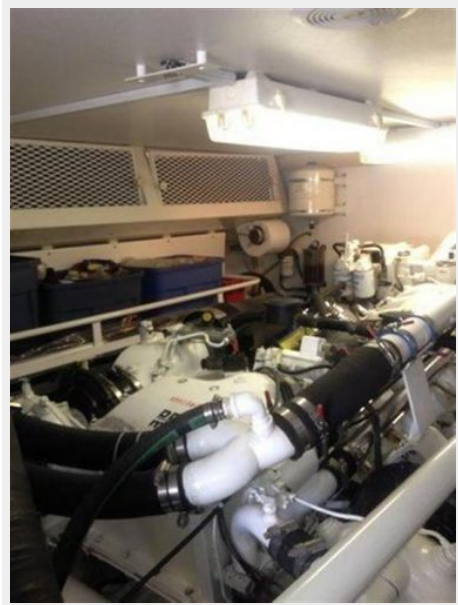


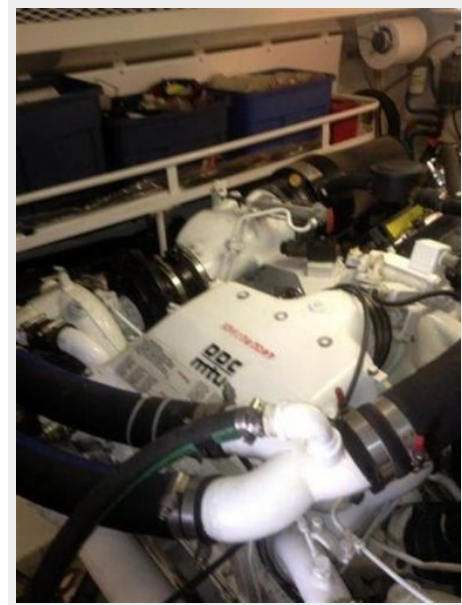
















# CONTACTS

---

Andrey Shestakov, leading yacht broker of the sales department of Shestakov Yacht Sales Inc. Shestakov Yacht Sales Inc., the official representative of the Miami/Fort Lauderdale FL headquarters.

## Contact details

---

Email: [andrey@shestakovyachtsales.com](mailto:andrey@shestakovyachtsales.com)

Web: [shestakovyachtsales.com/en/](http://shestakovyachtsales.com/en/)

## Telephones

---

USA: +1(954)274-4435

## Office hours

---

Monday – Saturday: **9:00 - 21:00** EDT

Sunday: **closed**

## Address

---



Harbour Towne Marina, 850 NE 3rd St,  
STE 213, Dania, FL 33004