

BEST TIMES



Год постройки: 2005

Модель: Cruising Yacht

Цена: ЦЕНА ЯХТЫ ПО ЗАПРОСУ

Длина общая: 42' (12.8mm)

Ширина: 13.5

Макс. осадка: 3' 5" (1.04mm)

Крейс. скорость: 22 Knots Kts. (25 MPH)

Макс. скорость: 29 Knots Kts. (33 MPH)

Купить **BEST TIMES** — н/д а также выбрать подходящую вам яхту из нашего каталога яхт вам поможет опытный яхтенный брокер Андрей Шестаков. На сегодняшний день компания **Shestakov Yacht Sales Inc.** имеет большое количество яхт в собственном списке продаж, а также тесно сотрудничает со всеми крупными яхтенными производителями по всему миру.

Для того чтобы купить яхту **BEST TIMES** — н/д а также проконсультироваться по любому вопросу связанному с покупкой, продажей, чартером яхт позвоните по телефону **+7(918)465-66-44**.

ОГЛАВЛЕНИЕ

ОГЛАВЛЕНИЕ	2
ХАРАКТЕРИСТИКИ	5
Обзор	5
Основная информация	5
Размеры	5
Скорость, вместимость и масса	5
Размещение	6
Корпус и палуба	6
Информация о двигателе	6
ФОТОГРАФИИ	7
Manufacturer Provided Image	7
Floor Plan	7
Bow View with High Stainless Steel Railings	7
Factory Hard Top and Extended Swim Platform for easy boarding	7
Huge Salon with NEW Flexsteel Pull-out Sleeper Settee	8
Salon with Teak Drop Leaf Table Extended Out	8
Salon Portside Storage, Solid Countertop with bottle storage below	8
Salon Entertainment Center with Upgraded Stereo (Summer, 2013) that is iPhone & Bluetooth Compatible, 31" Envision Flat Screen TV	8
Master Stateroom Forward of Galley	9
Master Stateroom Centerline Berth with NEW Mattress (Summer, 2013)	9
Master Stateroom 19" Sharp Aquos Flat Panel TV, & Cedar-lined hanging locker on Portside	9
Master Stateroom to Starboard, Overhead Hatch and Port & Starboard Port holes	9
Separate Shower Stall with seat and storage for toiletries	10
Head with Electric toilet, Sink, Storage	10
Stovetop & Double Stainless Steel Sink have solid covers matching the countertop	10
Galley to Starboard	10
Full Size Tundra Refrigerator with Freezer	11

Helm Station	11
Raymarine E127 Touch Screen Chartplotter/HD Digital 4KW Radar/Sirius Marine Weather	11
Raymarine I70 Multi-function display for depth, speed,etc.	11
Helm Air Conditioning Vent, Stereo Remote, Jabsco Spotlight Control,	12
Fusion MS-IP700i Marine Stereo with iPhone & Bluetooth compatible & remote	12
Cruisers Yachts Helm Control Panel Key Pad for Engines & Systems, Passcode Protected	12
Raymarine ST6001 AutoPilot, Electronic Controls with synchronizer	12
Raymarine Radar Dome (NEW SUMMER, 2013) & TV Antenna	13
Helm Station Seating	13
Helm Seat can be converted to Bolster Seats	13
Helm Captain & First Mate Double Seat	13
Port Companion Seats	14
Port Companion Seat swivels to convert to forward seating	14
Second Helm Air Conditioning Vent to cool Companion Seats	14
Port Yanmar 6LY2A STP turbocharged (440HP)	14
Cockpit Hatch for quick access to Engine Compartment	15
Starboard Yanmar 6LY2A STP turbocharged (440HP)	15
Electric Engine Hatch Rocker Switches for full access to Engine Compartment	15
Electrical Panel in Salon Portside Cabinetry	15
Fuses	16
Onan 9KW Generator & Racor Fuel Filters	16
Cockpit with Removable Table, Isinglass Enclosure and Snap-in-Snap-out carpeting	16
View of Cockpit to Port from Swim Platform	16
Cockpit Entertainment Wet Bar, Refrigerator & Ice maker & Cocktail table	17
Cockpit U-Shaped Stern Seating	17
U-Line Refrigerator & Ice Maker (with ice)!	17
Cockpit Wet Bar	17
Extended Swim Platform	18
Extended Swim Platform	18

Walk-through Windshield to Bow	18
Anchor Locker with gas-assist hatch, Maxwell Windlass, Foot Pedals, with remote at helm	18
Bow NEW SUNPAD (SUMMER, 2013)	19
Manufacturer Provided Image	19
КОНТАКТЫ	20
Контактная информация	20
Телефоны	20
Время работы	20
Адрес	20

ХАРАКТЕРИСТИКИ

Обзор

Twin Yanmar 440HP Diesels 825 hours. Onan 9KW Generator with 850 hours. **Factory Hard Top and Custom Awlgrip Paint and NEW bottom paint (Summer, 2013)! Electronics include NEW Raymarine E127 Chartplotter, Raymarine HD Digital 4KW 24" Radar, NEW Sirius Marine Weather, Fusion Marine Stereo for Smart Phone with Bluetooth & remote, Upgraded Salon Stereo (All NEW Summer, 2013). NEW Isinglass March, 2013, NEW docking canvas (Summer, 2013). Sleeps 4 adults in Master Stateroom and NEW Flexsteel Sleeper sofa in Salon. Head has separate shower stall. Full Galley with Micro/Convection Oven, Refrigerator/Freezer, and 2-Burner Electric Stove top. The layout in this Cruisers is fantastic for entertaining and cruising. This is an excellent quality express cruiser with lots of upgrades and has been well maintained.**

Основная информация

Тип судна: Cruising Yacht

Подкатегория: Express

Модельный год: 2005

Год постройки: 2005

Размеры

Длина общая: 42' (12.8mm)

Ширина: 13.5

Макс. осадка: 3' 5" (1.04mm)

Скорость, вместимость и масса

Крейс. скорость: 22 Knots Kts. (25 MPH)

Макс. скорость: 29 Knots Kts. (33 MPH)

Вместимость воды: 70 Gallons

Вместимость сточного бака: 50 Gal
Gallons

Объем топливного бака: 300 Gal Gallons

Размещение

Всего кают: 1

Всего коек: 1

Спальные места: 4

Всего ком. состава: 1

Корпус и палуба

Материал корпуса: Fiberglass

Комплектация корпуса: Deep Vee

Цвет корпуса: LIGHT GREY

Информация о двигателе

Двигатели: 2

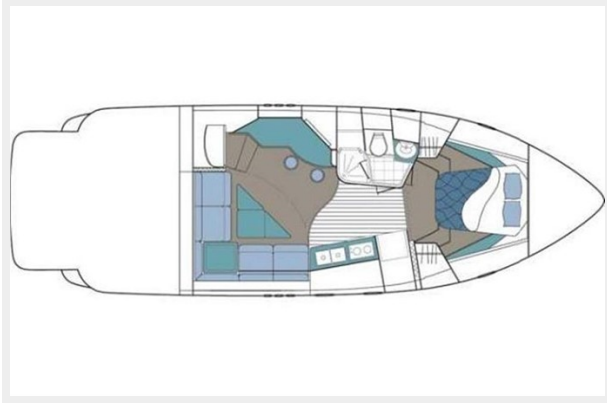
Производитель: Yanmar

Тип двигателя: Inboard

Тип топлива: Diesel

ФОТОГРАФИИ

Floor Plan



Manufacturer Provided Image



Factory Hard Top and Extended Swim Platform for easy boarding



Bow View with High Stainless Steel Railings



Huge Salon with NEW Flexsteel Pull-out Sleeper Settee



Salon with Teak Drop Leaf Table Extended Out



Salon Entertainment Center with Upgraded Stereo (Summer, 2013) that is iPhone & Bluetooth Compatible, 31" Envision Flat Screen TV



Salon Portside Storage, Solid Countertop with bottle storage below



Master Stateroom Forward of Galley



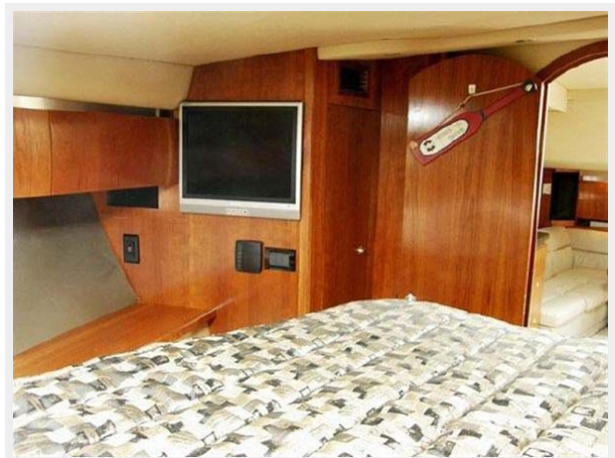
Master Stateroom Centerline Berth with NEW Mattress (Summer, 2013)



Master Stateroom to Starboard, Overhead Hatch and Port & Starboard Port holes



Master Stateroom 19" Sharp Aquos Flat Panel TV, & Cedar-lined hanging locker on Portside



Head with Electric toilet, Sink, Storage



Separate Shower Stall with seat and storage for toiletries



Galley to Starboard



Stovetop & Double Stainless Steel Sink have solid covers matching the countertop



Full Size Tundra Refrigerator with Freezer



Helm Station



Raymarine E127 Touch Screen Chartplotter/HD Digital 4KW Radar/Sirius Marine Weather



Raymarine I70 Multi-function display for depth, speed, etc.



**Helm Air Conditioning Vent, Stereo Remote, Fusion MS-IP700i Marine Stereo with iPhone & Bluetooth compatible & remote
Jabsco Spotlight Control,**



Raymarine ST6001 AutoPilot, Electronic Controls with synchronizer



Cruisers Yachts Helm Control Panel Key Pad for Engines & Systems, Passcode Protected



Raymarine Radar Dome (NEW SUMMER, 2013) & TV Antenna



Helm Station Seating



Helm Captain & First Mate Double Seat



Helm Seat can be converted to Bolster Seats



Port Companion Seats



Port Companion Seat swivels to convert to forward seating



Second Helm Air Conditioning Vent to cool Companion Seats



Port Yanmar 6LY2A STP turbocharged (440HP)



**Starboard Yanmar 6LY2A STP
turbocharged (440HP)**



**Cockpit Hatch for quick access to Engine
Compartment**



**Electric Engine Hatch Rocker Switches for
full access to Engine Compartment**



Electrical Panel in Salon Portside Cabinetry



Fuses



Onan 9KW Generator & Racor Fuel Filters



Cockpit with Removable Table, Isinglass Enclosure and Snap-in-Snap-out carpeting



View of Cockpit to Port from Swim Platform



Cockpit Entertainment Wet Bar, Refrigerator & Icemaker & Cocktail table



Cockpit U-Shaped Stern Seating



Cockpit Wet Bar



U-Line Refrigerator & Ice Maker (with ice)!



Extended Swim Platform



Extended Swim Platform



Walk-through Windshield to Bow



Anchor Locker with gas-assist hatch, Maxwell Windlass, Foot Pedals, with remote at helm



Bow NEW SUNPAD (SUMMER, 2013)



Manufacturer Provided Image



КОНТАКТЫ

Андрей Шестаков (Andrey Shestakov) – ведущий яхтенный брокер отдела продаж яхт и судов компании Shestakov Yacht Sales Inc. Официальный представитель Shestakov Yacht Sales Inc. для русскоговорящих клиентов в центральном офисе компании в Майами/Форт Лодердейл/Флорида/США.

Контактная информация

Email: andrey@shestakovyachtsales.com

Web: shestakovyachtsales.com

Телефоны

Краснодарский край: **+7(918)465-66-44**

США, Майами, Флорида: **+1(954)274-4435**

Время работы

Понедельник – Суббота: **9:00 - 21:00**
EDT

Воскресенье: **Закрито**

Адрес



Harbour Towne Marina, 850 NE 3rd St,
STE 213, Dania, FL 33004