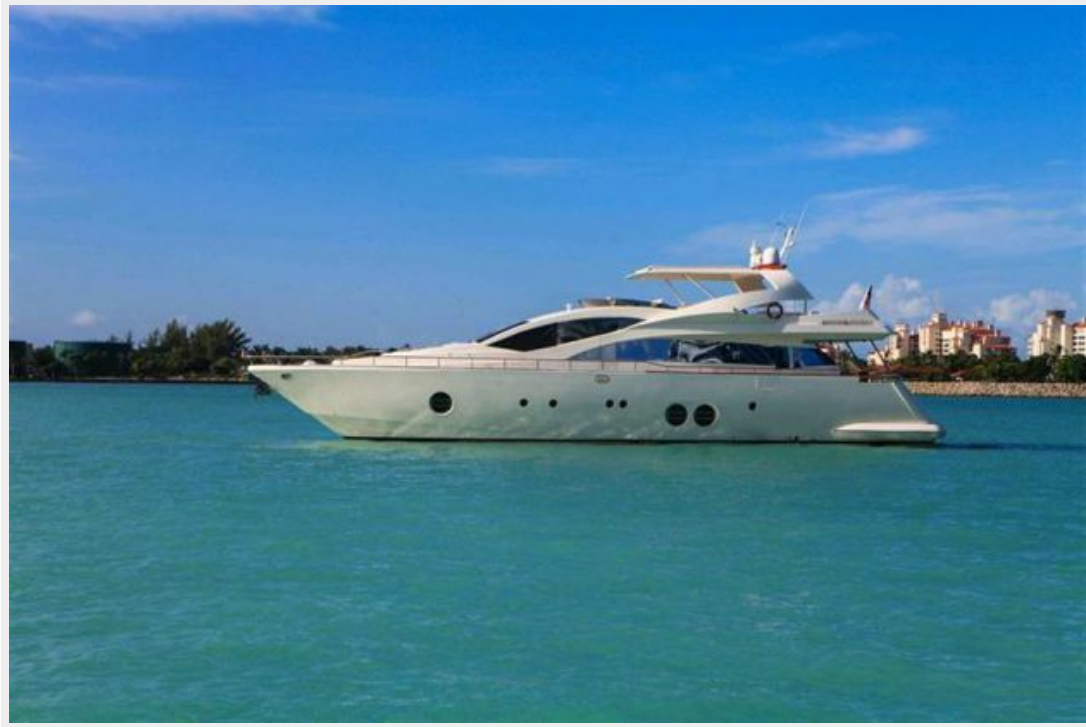


BLUE OCEAN — AICON YACHTS



Судостроитель: AICON YACHTS

Год постройки: 2010

Модель: Моторная яхта

Цена: **ЦЕНА ЯХТЫ ПО ЗАПРОСУ**

Местонахождение: United States

Длина общая: 85' 0" (25.91m)

Ширина: 21' 0" (6.40m)

Макс. осадка: 5' 7" (1.70m)

Крейс. скорость: 24 Kts. (28 MPH)

Макс. скорость: 27 Kts. (31 MPH)

Купить **Blue Ocean — AICON YACHTS** а также выбрать подходящую вам яхту из нашего каталога яхт вам поможет опытный яхтенный брокер Андрей Шестаков. На сегодняшний день компания **Shestakov Yacht Sales Inc.** имеет большое количество яхт в собственном списке продаж, а также тесно сотрудничает со всеми крупными яхтенными производителями по всему миру.

Для того чтобы купить яхту **Blue Ocean — AICON YACHTS** а также проконсультироваться по любому вопросу связанному с покупкой, продажей, чартером яхт позвоните по телефону **+7(918)465-66-44**.

ОГЛАВЛЕНИЕ

ОГЛАВЛЕНИЕ	2
ХАРАКТЕРИСТИКИ	4
Обзор	4
Основная информация	5
Размеры	5
Скорость, вместимость и масса	5
Размещение	5
Корпус и палуба	5
Информация о двигателе	6
ПОДРОБНОЕ ОПИСАНИЕ	7
Accommodations, Furnishing and Layout	7
Salon	7
Dinning	7
Galley & Laundry	7
Lower Helm Station	8
Master Stateroom	8
Master Head	9
VIP Stateroom	9
VIP Head	9
Guest Cabin (Port)	9
Guest Head (Port)	10
Guest Cabin (STBD)	10
Cockpit	10
Side Deck	11
Bow	11
Fly Bridge	11
Flybridge helm and electronics	12
Captains Stateroom	12

Crew Area	12
Crew Quarters	12
Deck Equipment	13
Electrical System	13
Electronics & Navigation Equipment	13
Under the water	14
Engine and Mechanical Equipment	14
Additional Information	14
Disclaimer	15
Исключения	15
Отказ от ответственности	15
ФОТОГРАФИИ	16
КОНТАКТЫ	32
Контактная информация	32
Телефоны	32
Время работы	32
Адрес	32

ХАРАКТЕРИСТИКИ

Обзор

Open to trade-ins. Financing is available.

Blue Ocean has full options including Seakeeper Gyro Stabilizer keeping the vessel functional and seaworthy.

One of the main characteristics of the Aicon Yachts, is the particular attention to design and the style of their luxury yachts. Their vessels are not only aesthetically pleasing but are extremely comfortable. The company applies the latest technology and design elements to each of their yachts, thus creating a unique product, combining luxury, technology, and quality. Very low hours with full-time captain and a crew. The yacht has been maintained with an open checkbook which makes this Aicon 85 motor yacht a unique and excellent buy in today's market. The owner is looking to trade up.

- Woodwork new table and restoration and dish and glass area. 10k
- Carpet removal solid wood flooring with stainless steel rub rail. 15k
- Electronic nav and entertainment top of the line stereo sounds amazing. And complete wiring and fixing of electric issues. 70k
- Mechanical and generators total service.
- A/C complete new control panels (now controllable per area) and new compressor. 15k
- New refrigerator.
- New wave runner and jet ski. 30k .
- Shocks for water skis
- Seakeeper 150k
- YACHTSIGN 30k
- Underwater lights 25k
- Wi-fi
- TV 4K in every room.
- Jacuzzi new
- Dishwasher new
- Roof sun deck
- Special extra. Slide and pool with underwater fence for open water swimming 35k.
- Shaft and propeller 30k The boat is in beautiful turn-key condition.

Основная информация

Тип судна: Моторная яхта

Подкатегория: Flybridge

Модельный год: 2010

Год постройки: 2010

Страна: United States

Открытая палуба мостика: Да

Размеры

Длина общая: 85' 0" (25.91m)

Ширина: 21' 0" (6.40m)

Макс. осадка: 5' 7" (1.70m)

Скорость, вместимость и масса

Крейс. скорость: 24 Kts. (28 MPH)

Макс. скорость: 27 Kts. (31 MPH)

Водоизмещение: 160055.602212 Pounds

Вместимость воды: 530 Gallons

Объем топливного бака: 2100 Gallons

Размещение

Всего кают: 4

Всего коек: 8

Спальные места: 8

Всего ком. состава: 4

Корпус и палуба

Материал корпуса: Fiberglass

Информация о двигателе

Двигатели: 2

Производитель: MAN

Модель: V12

Тип двигателя: Inboard

Тип топлива: Diesel

ПОДРОБНОЕ ОПИСАНИЕ

Accommodations, Furnishing and Layout

- Number of owner & guests that can sleep in staterooms: 9
- Number of owner & guests staterooms on vessel (#excluding crew) : 4
- Master Stateroom is : Amidship; has Head, Shower with king bed
- Guest Heads: 4
- Guest showers: 4
- Additional Captain & Crew Berths: 1
- Crew Head: 1
- Crew Shower: 1
- Carpeting
- Drapes
- Furniture: Chairs: 6, Tables: 1 and Sofa: 1

Additional Layout description:

- Salon: Bose lifestyle surround sound system

Salon

- Salon offers an spectacular panoramic views while cruising
- Two seat/sofa in fabric cloth on port side
- Two seat/sofa in fabric cloth on Aft salon
- Love seat to starboard
- Low cabinets on starboard and port side
- Hi- Lo TV cabinet forward to port on salon
- Indirect lighting on overheads
- Bose sound systems
- Samsung DVD players
- Wet bar to starboard with an Isotherm ice maker

Dinning

Forward of salon a cherry wood and glass table and seating for 8 people. Privacy panels separate settee and wheelhouse. Indirect lighting in overheads.

Galley & Laundry

- Galley: Up

- Molded Acrylic countertop with a dual compartment sink
- Cherry wood flooring
- Overhead lighting
- Storage cabinet next to the side entrance door, with shelves and drawers
- Miele refrigerator/freezer
- Miele microwave & Oven
- SubZero refrigerator/freezer with double door
- Miele 5-burner cook top
- Day head to Starboard

- Miele Microwave
- Whirlpool dishwasher
- Sand coffee maker

- Water Heater
- Water system: Pressure, Dockside

Lower Helm Station

- Garmin GPS Map 7612
- Boning MAN display monitors
- (2) Ray marine ST 290
- Ray marine ST 8002 Smart Pilot
- (2) ACR Search Light Controls
- Intruder trim taps controls
- Bow and stern thrusters controls
- Electric windlass controls (Port & Starboard) Blutec Marine system display
- Raritan router indicator
- DanForth compass

Master Stateroom

- The master stateroom is accessed via staircase, centerline bed with upgraded fabrics, overhead lighting.
- Large panoramic window port & starboard
- (2) Reading lights
- Indirect lighting in overheads
- Bulkhead panel behind bed
- Hanging locker to Starboard
- Abundance storage
- Bureau with drawers under the panoramic window to port
- Safe box
- Samsung Flat screen TV

- Samsung Blue-Ray Disc
- (2) makeup desk
- Custom cherry dresser aft with drawers

Master Head

- Entrance port aft in master stateroom
- Wood floor
- Lower cabinet under the sinks
- Overhead lighting
- Vanity with dual sink with hot/cold water faucet; storage below and mirror
- Fiberglass shower stall with glass doors, overhead light and teak grate sole
- Hot and cold water faucet to shower head on hose, cherry bench seat, plenty water jets, diverted valve and large overhead nozzle
- Porthole on shower

VIP Stateroom

VIP Stateroom is forward with a centerline bed

- (2) Reading lamps
- Overhead lighting
- Indirect lighting behind panel on bulkhead behind bed windows port & starboard
- Toshiba Flat screen TV Model 29L1350U
- Samsung Blue Ray Disc
- Bose Speakers
- Hanging locker

VIP Head

- Wood floor
- Overhead lighting
- Vanity with single sink with hot/cold water faucet; storage below and mirror
- Fiberglass shower stall with glass doors, overhead light and teak grate sole
- Hot and cold water faucet to shower head on hose, plenty water jets, diverted valve and large overhead nozzle

Guest Cabin (Port)

- (2) Single Berths

- Nightstand with drawers
- Reading light
- Overhead lighting
- Opening porthole
- Hanging Locker
- Digital AC control
- Bose speakers
- Toshiba Flat Screen TV

Guest Head (Port)

- Wood floor
- Overhead lighting
- Vanity with single sink with hot/cold water faucet; storage below
- Fiberglass shower stall with glass doors, overhead light and teak grate sole
- Hot and cold water faucet to shower head on hose, plenty water jets, diverted valve and large overhead nozzle

Guest Cabin (STBD)

- Double Bed
- Nightstand with drawers
- Reading light
- Overhead lighting
- Opening porthole
- Hanging Locker
- Digital AC control
- Bose speakers
- Toshiba Flat Screen TV

Cockpit

- Teak cockpit floor
- Teak cockpit table
- Engine room door entry
- 10 over head lights
- Blue courtesy lights
- AFT cockpit bench seat with (New Cushion cover)
- Dual Transom door (Port & Starboard)
- Dual stairways to swim platform
- Lofrans electric windlass (Port & Starboard)

- Bose speakers
- Salon door in tempered glass and stainless steel divided into two sections
- Control panel for the gangway and the swim platform
- Hot and cool water cockpit shower
- Hydraulic Opacmare passerelle
- Teak sidedecks
- Garage

Side Deck

- Stainless steel handrail
- Side boarding gates at mid-ship (Port and STBD)
- Side boarding ladder
- Mooring hooks storage in a recess of the superstructure (one each side)
- Mirrored windows with tempered glass
- Watertight door with access to galley on the port side of the superstructure and also on the STBD side

Bow

- Large sunpad w/dual cushion located forward deck
- Anchor windlass: Lo Frans Model: Cs009560
- Two (2) fresh water wash down system (for anchor and anchor chain) in the anchor Chain lockers

Fly Bridge

- The fly bridge and full beam sun deck are accessed through the external staircase in the aft cockpit with teak steps.
- Bar top in teak and working top
- Stainless steel Trinox grill in custom stainless steel support
- Storage cabinet on starboard side next to the bar cabinet
- Freezer
- Vitrifrigo Fridge
- Bose Speakers
- Sunbathing cushions are to port aft of helm station
- C-shaped sofa on port-side
- Teak table
- Tender cradle
- Opacmare davit(tag states 400kg max lifting capacity)
- Brand New custom made Evolution Tender

- Teak decks
- U-shaped stainless steel handrails on sides
- Covers for the sofas, sun pads, table and console
- Jacuzzi
- Retractable sunroof

Flybridge helm and electronics

- Garmin 7616
- Raymarine smart controller
- (2) ACR search light control
- Intruder trim tabs control
- Raymarine ST290 depth sounder
- Ritchie compass
- Electric windlass controls (Port & Starboard)
- Bow and stern thrusters controls
- Raritan router indicator
- Dual search light
- Raymarine ST 8002
- Fusion MS-UD750 Stereo
- Ray 240E VHF
- Weather Fax
- AIS Position

Captains Stateroom

The forward/ Captain's stateroom provides sleeping for two adults on a full berth (w/ storage below), a dual hanging locker, and an AM/FM radio & CD player.

Crew Area

The forward salon (Crew area) featured two (2) benches, an adjustable wooden table, multiple storage lockers, two (2) electrical panels, a compact refrigerator, a stainless steel counter top w/ a stainless steel sink, an electric cook top, and an extractor / fan.

Crew Quarters

The forward starboard/ Crew quarters provides sleeping for two adults on upper and lower single berths (w/ storage below) and a hanging locker.

Deck Equipment

- Anchor w/Lines 1 mfg Plow
- Bow Pulpit & Rails
- Covers & Curtains
- Coast Guard Approval Safety Package
- Deck Material : teak
- Deck Wash Down System: Freshwater, Saltwater
- Fenders and Lines
- Search Lights: Dual; Remote Controls: Elec
- Spreader Lights
- Windlass: Lo Frans Elec

Other Deck Equipment:

- 2- Lo Frans cockpit capstan
- Fly bridge Hard -Top w/ sunroof

Electrical System

- Shore AC power systems 250 Volts, 100 Amps 125/250 Volts 50 Amps
- DC power 12 & 24 Volts systems
- Shore power Intelt
- AC source selector switch
- Main Breakers
- Branch Breakers
- Circuit load monitors
- Batteries: 15
- Battery charger: Auto, 100 AMPS
- Generator (Primary) : kohler K.W 25 Hours 815
- Generator (Secondary): Kohler K.W 25 Hours 155
- Electrical System: DC- 12V, 24V; AC-440V

Other Electrical System Details:

- Master volt charger- mass 24/100
- Inverter master walt Sinc 24/2500

Electronics & Navigation Equipment

- 2- Raymarine E-120
- Raymarine GPS
- Bluter Marine system

- MAN Displays units

Under the water

- (4) Blades propellers - Ni - bral/ bronze
- Stainless steel propeller shafts
- Cutless bearing
- Bronze through - hull fittings
- Transducers
- Bow thruster with a four (4) blade propeller
- Stern thruster with a four (4) blade propeller
- Hydraulic trim tabs
- Underwater exhaust
- Stainless still rudder blades
- Under water lights

Engine and Mechanical Equipment

- Air Conditioning
- Bilge Blowers: 2
- Bilge Pumps
- Bow Thrusters: Rodriguez Marine
- Controls: Cabin, Bridge
- Engine Alarm
- Emergency Engine Stop
- Fire Extinguishing System: Halon; Auto
- Fresh Water Cooling System
- Fuel Filters
- Fuel; Shut OFF Valve
- Head Type(s): Recirculatin, Holding; Elec
- Lube Oil Storage & Transfer System

Other Equipment & Engine Details:

- Dual Racor filter system
- Sigmar water heater
- Stern Thruster

Additional Information

- Underwater Lights Different Colors
- Sea Keeper #16

- New Miele Dishwasher

Disclaimer

The Company offers the details of this vessel in good faith but cannot guarantee or warrant the accuracy of this information nor warrant the condition of the vessel. A buyer should instruct his agents, or his surveyors, to investigate such details as the buyer desires validated. This vessel is offered subject to prior sale, price change, or withdrawal without notice.

Исключения

При продаже яхты исключаются личные вещи владельца.

Отказ от ответственности

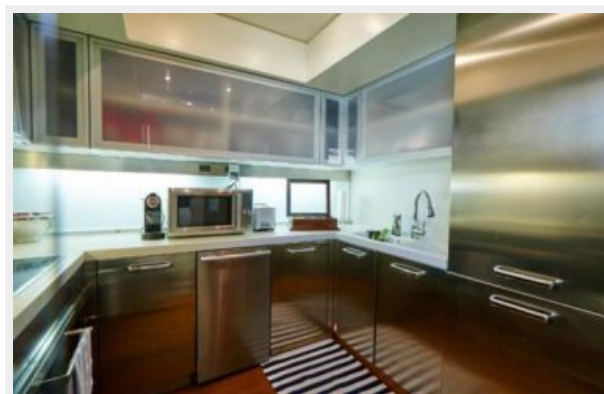
Компания предоставляет описание судна или яхты добросовестно, но не может гарантировать точность этой информации, а также не ручается за техническое состояние. Покупатель должен проинструктировать своих агентов или оценщиков исследовать представленную информацию более подробно, по собственному желанию. Продажа судна или яхты, изменение цены или снятие с продажи будет происходить без предварительного уведомления.

ФОТОГРАФИИ





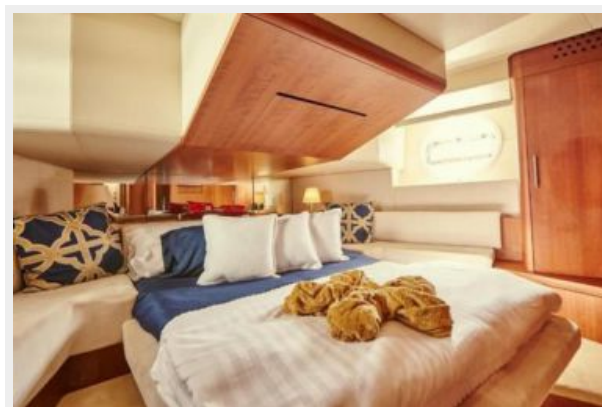




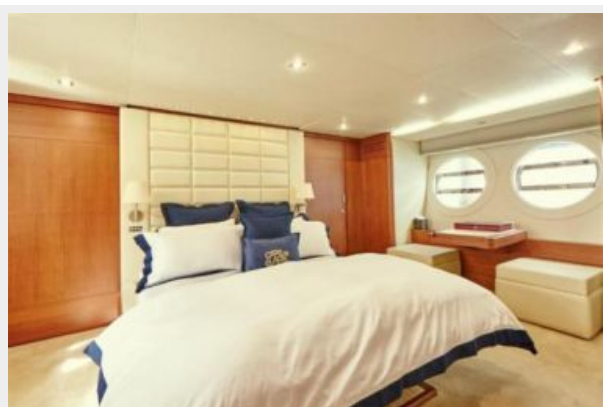
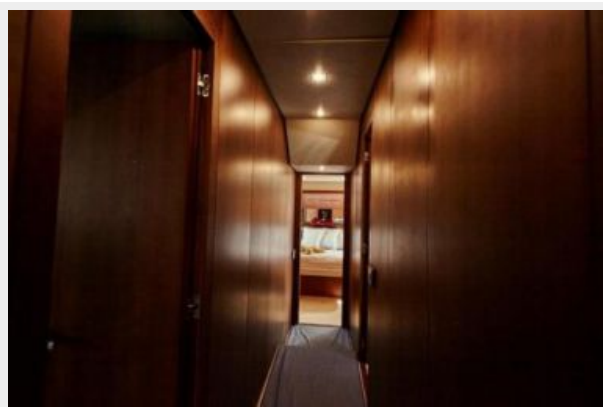


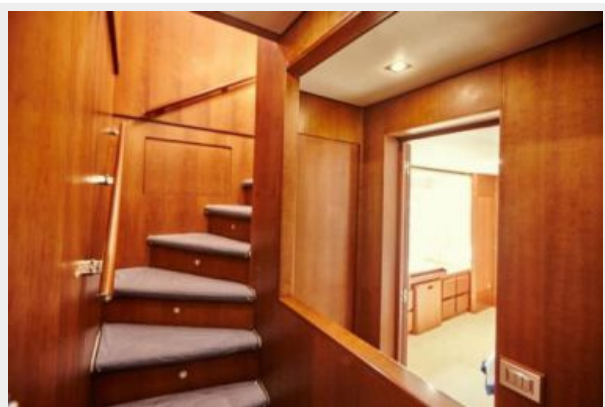






















КОНТАКТЫ

Андрей Шестаков (Andrey Shestakov) – ведущий яхтенный брокер отдела продаж яхт и судов компании Shestakov Yacht Sales Inc. Официальный представитель Shestakov Yacht Sales Inc. для русскоговорящих клиентов в центральном офисе компании в Майами/Форт Лодердейл/Флорида/США.

Контактная информация

Email: andrey@shestakovyachtsales.com

Web: shestakovyachtsales.com

Телефоны

Краснодарский край: **+7(918)465-66-44**

США, Майами, Флорида: **+1(954)274-4435**

Время работы

Понедельник – Суббота: **9:00 - 21:00**
EDT

Воскресенье: **Закрито**

Адрес



Harbour Towne Marina, 850 NE 3rd St,
STE 213, Dania, FL 33004