

44' 2002 VOYAGE 440 — VOYAGE YACHTS



Судостроитель: VOYAGE YACHTS

Год постройки: 2002

Модель: Катамаран

Цена: **ЦЕНА ЯХТЫ ПО ЗАПРОСУ**

Местонахождение: United States Virgin Islands

Длина общая: 44' 0" (13.41m)

Ширина: 25' 1" (7.65m)

Макс. осадка: 3' 5" (1.04m)

Купить 44' 2002 Voyage 440 — VOYAGE YACHTS а также выбрать подходящую вам яхту из нашего каталога яхт вам поможет опытный яхтенный брокер Андрей Шестаков. На сегодняшний день компания Shestakov Yacht Sales Inc. имеет большое количество яхт в собственном списке продаж, а также тесно сотрудничает со всеми крупными яхтенными производителями по всему миру. Для того чтобы купить яхту 44' 2002 Voyage 440 — VOYAGE YACHTS а также проконсультироваться по любому вопросу связанному с покупкой, продажей, чартером яхт позвоните по телефону **+7(918)465-66-44**.

ОГЛАВЛЕНИЕ

ОГЛАВЛЕНИЕ	2
ХАРАКТЕРИСТИКИ	3
Основная информация	3
Размеры	3
Скорость, вместимость и масса	3
Размещение	3
Корпус и палуба	3
Информация о двигателе	4
ПОДРОБНОЕ ОПИСАНИЕ	5
Manufacturer Provided Description	5
Accommodations	5
Исключения	6
Отказ от ответственности	7
ФОТОГРАФИИ	8
Manufacturer Provided Image: 440	8
Manufacturer Provided Image: 440	8
Manufacturer Provided Image: 440	8
Manufacturer Provided Image: 440	8
Manufacturer Provided Image: 440	9
Manufacturer Provided Image: 440	9
Manufacturer Provided Image: 440	9
КОНТАКТЫ	10
Контактная информация	10
Телефоны	10
Время работы	10
Адрес	10

ХАРАКТЕРИСТИКИ

Основная информация

Тип судна: Катамаран

Модельный год: 2002

Год постройки: 2002

Страна: United States Virgin Islands

Размеры

Длина общая: 44' 0" (13.41m)

Длина по ватерлинии: 40' 6" (12.34m)

Ширина: 25' 1" (7.65m)

Макс. осадка: 3' 5" (1.04m)

Трапы: 62' 0" (18.90m)

Скорость, вместимость и масса

Водоизмещение: 20240 Pounds

Вместимость воды: 150 Gallons

Объем топливного бака: 106 Gallons

Размещение

Всего кают: 4

Всего коек: 4

Всего ком. состава: 4

Корпус и палуба

Материал корпуса: Fiberglass

Информация о двигателе

Двигатели: 2

Производитель: None

Тип двигателя: Inboard

Тип топлива: Diesel

ПОДРОБНОЕ ОПИСАНИЕ

Manufacturer Provided Description

The Voyage 440 is a performance, luxury, bluewater cruising catamaran. The spacious galley up combines with the saloon and cockpit to form an exceptional entertainment area. All cabins have queen-size beds. The layout options offer either the Owners version with three queen-size cabins, and a choice of two or three head / showers; or the Charter version with four queen-size cabins, and four head / showers. The deck has been designed for safety and shorthanded sailing with all controls led aft to the coachroof winches. The 440 also features a generous performance sail plan. The ample deck and trampoline area allow for comfortable outdoor activities, and the large cockpit is shaded by a bimini with hardtop walkway aft. The traveler arch features a step-through to the dive platform.

Accommodations

HULL DECK AND BULKHEADS • Antifouling over epoxy based osmosis barrier • Closed cell PVC foam core, vacuum bonded for stiffness, strength and minimal weight • Forward water tight compartments with horizontal bulkheads • Hand laid-up GRP construction using multi layers of Quadraxial glass roving, isophthalic and orthophthalic polyester resin and other highest grade material • Low aspect reinforced keels • Marine ply and balsa core on critical structure bulkheads for added strength and stiffness • Reinforced fitting areas for cleats and chain plates • Skeg supported rudders

DECK FITTINGS: STAINLESS STEEL, Grade 316 • Bow pulpits with teak seats • Double guard wires • Grab rails on coach roof • Pushpits on stern with brackets for life ring buoys and overboard lights • Stanchions and stanchion bases • Swim ladder Starboard • Water stays attachment points for bow sprit • Gates in guard wires • Swim ladder Port

DECK EQUIPMENT • 1 x Electric windlass: LOFRANS • 2 x Primary winches on coach roof: ANDERSEN 46ST • 2 x Secondary winches in cockpit: ANDERSEN 46ST • 8 x Aluminium mooring cleats • Teak walkway between trampolines • Tracks, cars, jammers and blocks • Webbing trampolines (one season) • Propane BBQ (PARKER Grill) on Dive Platform • Snorkeling Equipment

PLUMBING: • 2 x Black water systems, holding tanks • 2 x Manual bilge pumps • 2 x Water heater 22 litre • 4 x Automatic electric bilge pumps • Pressurized hot and cold deck shower (starboard) • Self draining cockpit

HATCHES AND WINDOWS: • 11 x LEWMAR hatches • 2 x GRP locker lids: foredeck • 7 x GRP locker lids: cockpit • 8 x LEWMAR port lights • 8 x Reflective laminated safety glass windows • Anodised aluminium framed sliding door with safety glass and fixed opening positions • Ventilation/Escape hatch with teak grid in galley • Dive equipment hatch and locker in aft coaming

SAFETY EQUIPMENT: • Basic safety equipment including: flares, life jackets, first aid kit and life rings

RIGGING: • 7/8th fractional rig • Anchor chain lead internally through compression post • Anodised Aluminium mast, boom, cross beam and double compression post • Attachment point for bow sprit • Color coded sheets and control lines • Double purchase main halyard • Flag halyards, Port and Starboard • Mast supported by triple spreaders, intermediate and cap shrouds, forestay and inner forestay • Reefing lines x 2 and luff pendants x 2 • Telescopic boom derrick for hauling dinghy on to dive

platform SAILS: • Fully battened main with large roach, 2 reef points, 10.3 oz high modulus, cross cut Dacron (new) • Furling genoa with foam luff and UV cover, 7.3 oz high modulus cross cut Dacron • HARKEN battcar system for mainsail • Mainsail stowage pack with lazy jacks • PROFURL genoa roller furler COCKPIT/AFT DECK: • 7 x Storage lockers • Dingy stowage supports and BBQ mounting point • Double helmsman's seat • GRP Cockpit table • Sheet pouches x 2, Utility pouch x 1 • Steering console including • Instrument console • Stainless steel steering wheel • Teak dive platform/aft deck • Traveller arch • Cockpit Cushions • Cockpit table - White GRP – Removable ACCOMMODATION: MAIN SALOON • Izip Leather (new) upholstered settee • Coffee table • CORIAN type work surfaces • Modules in moulded GRP • Standing height throughout 1.9m • Storage in seating modules GALLEY: • 4 x Burner propane hob and propane oven • CORIAN type work surfaces with stainless steel rails and fiddles • Facility for microwave oven • Front opening refrigerator - 12V air cooled ADLER/BARBOUR • Large recessed drip tray • Modules in moulded GRP • Pressurized hot and cold water • Stainless steel sink • Stainless steel waste chute with cover • Top opening freezer, 12V air cooled ADLER/BARBOUR • Galley Appointments FORWARD AND AFT CABINS: • Access to bow storage • Cabin and reading lights • Cabin lights & reading lights • Cave lockers • Hanging and storage cupboards • Laundry locker with upholstered cover • Modules in moulded GRP • Queen size bunk with split mattresses • Stainless steel towel rail • Cabin Appointments BOW CABINS • Cabin Appointments • Cabin Light • Fan • Hatch • Single V-Berth HEAD COMPARTMENTS: • Integrated shower grate and sump • Manual marine toilet • Mirror • Modules in moulded GRP • Stainless steel towel rail • Vanity cabinet • Wash basin and shower with hot and cold water • 4 x Heads, 2 x Port, 2 x Stbd NAVIGATION CENTRE: • Access panels to electrical installation and systems • Instrument console • Navigation seat • Chart table with recessed chart stowage INSTRUMENTATION: • Compass • ICOM M-402 VHF Radio with antenna on mast • RAYMARINE ST60 Tridata & Wind COMFORT AND LIFESTYLE: • Dimmers, Courtesy Lights, Boom light, 12V outlet • Sound system, 12V Radio/CD and 4 Marine speakers in saloon/cockpit ELECTRICS: • 2 x 160A AMPLE alternators with SMART multi stage regulators • 2 x Engine start batteries (12V) @ 65 AH • AC shore cable socket • Battery isolator switches • Ceiling lights • Circuit breaker panel • Cockpit lights • Deck light • Interior AC outlets: 3 in saloon, 1 in each cabin • Lazarette and engine compartment lights • LINK 2000 battery management system • Mast top and lower navigation lights • Ships load battery banks (12V) gel - 300AH x 2 (600AH) • HEART 25 Inverter/Charger 12V to 110V • Shore power cable 30A ENGINE EQUIPMENT: • 2 x Instrument panels with engine hour meters • 2 x 55A alternators • High pressure fuel lines • Sound insulation • 2 x 40Hp fresh water cooled YANMAR diesel engines with saildrives and fixed propellers MOORING GEAR AND GROUND TACKLE: • 25kg DELTA anchor (new 08) with tipper • 50m galvanized chain (new 08) and 50m nylon anchor rode • Anchor bridle with thimbles for anchoring • Dock lines and fenders • Two anchor rollers, one with tipper • FORTRESS anchor F23 INFLATABLE • 12ft APEX RIB tender (new 08) with 15Hp outboard engine

Исключения

При продаже яхты исключаются личные вещи владельца.

Отказ от ответственности

Компания предоставляет описание судна или яхты добросовестно, но не может гарантировать точность этой информации, а также не ручается за техническое состояние. Покупатель должен проинструктировать своих агентов или оценщиков исследовать представленную информацию более подробно, по собственному желанию. Продажа судна или яхты, изменение цены или снятие с продажи будет происходить без предварительного уведомления.

ФОТОГРАФИИ

Manufacturer Provided Image: 440



Manufacturer Provided Image: 440



Manufacturer Provided Image: 440



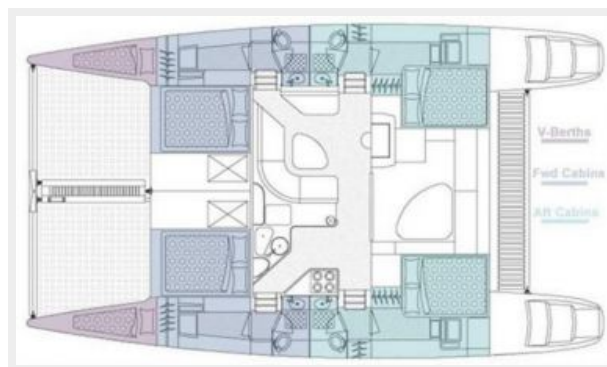
Manufacturer Provided Image: 440



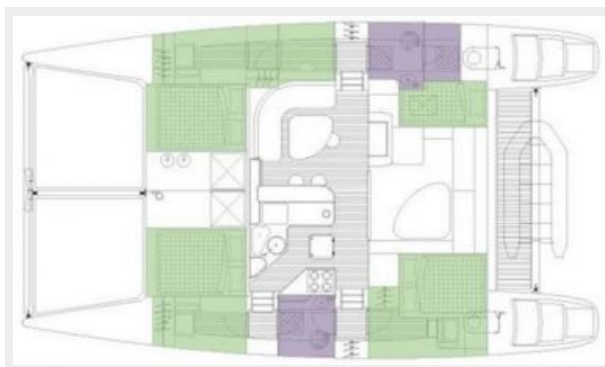
Manufacturer Provided Image: 440



Manufacturer Provided Image: 440



Manufacturer Provided Image: 440



КОНТАКТЫ

Андрей Шестаков (Andrey Shestakov) – ведущий яхтенный брокер отдела продаж яхт и судов компании Shestakov Yacht Sales Inc. Официальный представитель Shestakov Yacht Sales Inc. для русскоговорящих клиентов в центральном офисе компании в Майами/Форт Лодердейл/Флорида/США.

Контактная информация

Email: andrey@shestakovyachtsales.com

Web: shestakovyachtsales.com

Телефоны

Краснодарский край: **+7(918)465-66-44**

США, Майами, Флорида: **+1(954)274-4435**

Время работы

Понедельник – Суббота: **9:00 - 21:00**
EDT

Воскресенье: **Закрыто**

Адрес



Harbour Towne Marina, 850 NE 3rd St,
STE 213, Dania, FL 33004