

## COCONUT — MARINE TRADER



**Судостроитель:** MARINE TRADER

**Год постройки:** 1982

**Модель:** Траулер

**Цена:** ЦЕНА ЯХТЫ ПО ЗАПРОСУ

**Местонахождение:** United States

**Длина общая:** 44' 0" (13.41m)

**Ширина:** 14' 6" (4.42m)

**Мин. осадка:** 4' 6" (1.37m)

**Крейс. скорость:** 8 Kts. (9 MPH)

**Макс. скорость:** 10 Kts. (12 MPH)

Купить Coconut — MARINE TRADER а также выбрать подходящую вам яхту из нашего каталога яхт вам поможет опытный яхтенный брокер Андрей Шестаков. На сегодняшний день компания Shestakov Yacht Sales Inc. имеет большое количество яхт в собственном списке продаж, а также тесно сотрудничает со всеми крупными яхтенными производителями по всему миру.

Для того чтобы купить яхту Coconut — MARINE TRADER а также проконсультироваться по любому вопросу связанному с покупкой, продажей, чартером яхт позвоните по телефону **+7(918)465-66-44**.

# ОГЛАВЛЕНИЕ

ОГЛАВЛЕНИЕ	2
ХАРАКТЕРИСТИКИ	6
Основная информация	6
Размеры	6
Скорость, вместимость и масса	6
Размещение	6
Корпус и палуба	7
Информация о двигателе	7
ПОДРОБНОЕ ОПИСАНИЕ	8
Deck & Hull	8
Accommodations	8
Salon	9
Galley	10
Engine Room	10
Electrical	11
Electronics	11
Recreational & Safety Gear	11
Description by Surveyor	12
Исключения	12
Отказ от ответственности	12
ФОТОГРАФИИ	13
Bow	13
Fly bridge helm station with Furuno GPS Chartplotter, Radar, VHF, Autohelm, two (2) Flat Screen Monitors	14
Stidd chairs with cup holders	14
Fly bridge helm station with Furuno GPS Chartplotter, Radar, VHF, Autohelm, two (2) Flat Screen Monitors	14
Stereo System	14

Flybridge helm station with two (2) Stidd Chairs upholstered in blue leather. Electrical Sub-Panel and brand new Seamark Canvas.	14
Bimini Top	14
Fly bridge settee with teak hi-lo coffee table. Freezer on starboard side.	15
Table with Convertible Leaves	15
Large freezer chest	15
Stidd helm chairs	15
Stern Area with Tender	15
Stern Area	16
Seating Area with BBQ Grill (Covered)	16
Aluminum Mast	17
Furuno Navigational Equipment	17
Tender with 15 hp Johnson engine	17
Seating Area with BBQ Grill	17
Stern Storage	18
Lazarette	18
Transom	18
Bow Area	18
Windlass	19
Anchor	19
Windlass	19
Master Stateroom	20
Ample Storage in Master Stateroom	20
Washer/Dryer Combo	20
Master Bed	20
Master	20
Master Stairway to Salon	20
Master Shower	21
Master Head	21
Master Stateroom Vanity, Grohe faucet, SS sink and custom cabinetry in teak with Wenge	

inserts.	21
Stairway from Salon to Master	21
Master Bed	22
Master Bed	22
Master Stateroom	22
Master - Natural Sunlight	22
Salon Desk Area	22
Salon Desk Area	22
Main Salon with settee upholstered in blue leather, custom solid teak table, closed.	23
L-Shaped Settee and Large Dining Table	23
Main electrical distribution panel made of brushed aluminum with digital meters, back-lit.	24
Entertainment center made of solid teak with antique glass leaded inserts and pull-out drawers for liquor cabinet.	24
Salon navigation station with on-board computer with navigation software, ship's log and custom teak chair.	25
Lower helm station with Furuno chart plotter and battery switch panel made of brushed aluminum.	25
Forward shower/tub with Grohe shower fixture.	28
V Berth	29
V Berth	30
V Berth	30
V Berth	30
V Berth	30
V Berth	30
V Berth	30
Main Engine Room with Yanmar Main Engine.	31
Main Engine Room with Yanmar Main Engine.	31
Yanmar Generator	31
Main Engine Room with Yanmar Main Engine.	32
КОНТАКТЫ	34

---

Контактная информация	34
Телефоны	34
Время работы	34
Адрес	34

# ХАРАКТЕРИСТИКИ

## Основная информация

Тип судна: Траулер

Подкатегория: Aft Cabin

Модельный год: 1982

Год постройки: 1982

Страна: United States

## Размеры

Длина общая: 44' 0" (13.41m)

Длина по ватерлинии: 42' 0" (12.80m)

Длина палубы: 44' 0" (13.41m)

Ширина: 14' 6" (4.42m)

Мин. осадка: 4' 6" (1.37m)

Длина привального бруса: 43' 7" (13.28m)

## Скорость, вместимость и масса

Крейс. скорость: 8 Kts. (9 MPH)

Крейсерская скорость поворота: 3000 Kts.

Макс. скорость: 10 Kts. (12 MPH)

Макс. скорость поворота: 3300 Kts.

Водоизмещение: 48000 Pounds

Вместимость воды: 200 Gallons

Вместимость сточного бака: 40 Gallons

Объем топливного бака: 880 Gallons

## Размещение

Всего кают: 2

Всего коек: 3

Всего ком. состава: 2

## Корпус и палуба

---

**Материал корпуса:** Fiberglass

## Информация о двигателе

---

**Двигатели:** 2

**Производитель:** Yanmar

**Модель:** 6LY2AMSTPC

**Тип двигателя:** Inboard

**Тип топлива:** Diesel

---

# ПОДРОБНОЕ ОПИСАНИЕ

---

## Deck & Hull

---

- Awlgrip paint on hull, deck and super structure
- protective Sunbrella cover fits to cap rail for protection
- stainless steel rub rail
- Hull painted with anti-foul
- propeller painted with PropSpeed anti-fouling paint
- zincs installed on shaft and stern
- stainless steel racks installed - can hold a rigid kayak on deck
- davits at stern

### Main Deck

- Lofrans Tigress anchor windlass with double bow roller with Delta 55 lb and CQR 45 lb anchors
- 200 feet of chain stored in chain locker
- Awlgrip non-skid paint on deck
- bow thruster

### Fly Bridge

- Full Sunbrella bimini cover
- Strataglass clear panels attached to bimini top with zippers - full enclosure
- stainless steel wheel and rigging
- aluminum mast
- new hydraulic steering, hydraulic autopilot and new instruments
- new electronics
- 6 overhead LED lights, 4 LED courtesy lights at deck level
- 2 Stidd captains chairs with cup holders and shocks
- L-shaped settee with Sunbrella fabric cushions - includes storage for EPIRB, life jackets and recreational gear
- soft pack life raft
- large freezer chest

---

## Accommodations

---

### Master (Aft)



- Coach roof that leads to the fly bridge
- large hanging locker to port
- bedside table
- 10,000 BTU air conditioner
- new teak veneers and upper half of walls is covered in light cream-colored genuine leather
- new headliners
- 9 LED light fixtures, 4 swivel LED spot lights, 1 wall lamp
- to starboard, teak cabinets with louvered teak doors
- combination washer/dryer
- Head: teak cabinetry, stainless steel sink with mirror finish, Corian counter top, new Grohe faucet, Grohe hand-held shower wand, Raritan marine toilet on teak platform, new teak parquet flooring

### VIP Stateroom (V-Berth)

- refitted with new teak veneers and new lighting fixtures with dimmers
- 2 reading lamps with dimmers

Head: shower area has a sit-down tub, overhead LED spot light and new Grohe hand-held shower fixture, stainless steel sink with mirror finish, Raritan marine toilet

## Salon

---

### Pilot Station

- new electronics
- remote autopilot
- navigation station with new computer with Nobeltec nav software - attached to a segregated Raymarine GPS antenna - redundant system to Furuno NavNet fly bridge station and lower helm station

### Salon

- custom settee upholstered in navy blue genuine leather with pull out reading lamps on either side
- new, large solid teak table with folding leaves - can be lowered or raised to serve as a dining table or cocktail table - seats 6 to 8 adults
- entertainment cabinet with 4 pull-out storage drawers - made of solid teak with leaded antique glass doors inserts
- new Samsung 32" flat screen LCD tv on articulating arm - connected to new KVH M3 satellite antenna - tv can also be used as additional screen for nav equipment

- new solid teak credenza that houses new main electric panel
- new headliners on detachable wooden panels for easy access to electrical wiring
- well lit with 9 large LED fixtures, 7 LED spots, 3 LED swivel spots and 2 wall lamps - all with dimmers
- entire salon has been re-fitted with new teak veneer varnished with a matte satin finish
- upper half of saloon walls covered with closed cell foam and suede material
- new 12,000 BTU air conditioner
- 3 large cabinets with louvered teak doors provides ample storage of DVDs and books
- entertainment cabinet with Samsung DVD/stereo surround sound system
- beneath helm seat is an ice maker

## Galley

---

- refurbished with new teak veneers, new teak cabinetry, new teak and stainless steel pin-rails and new Corian counter tops and back splash
- counter area is lighted with above-counter LED rope lights
- stainless steel double sink polished to a mirror finish with new Grohe stainless steel faucet
- new stainless steel Tappan microwave oven
- new recessed coffee maker
- Dometic stainless steel stand-up freezer/refrigerator
- LED lighting fixtures
- Uline ice maker

## Engine Room

---

- new Yanmar diesel engine
- 2 new fuel tanks with new fittings and hoses
- new Acusti-Block sound barrier and 2" SounDown foam insulation with mylar covering
- Kohler generator was repainted and mounted on new mounts
- 2 new Racor 1000 primary fuel filters
- Racor water sensor alarm
- vacuum gauge with remote gauges at fly bridge helm and salon pilot station
- 2 new bilge pumps with Smart Switches wired to bilge alarms
- new sea-cocks
- sea water pumps for air conditioners
- sole is custom made wooden grate made of varnished Ecuadorean hardwood
- engine has new Centek exhaust silencing system
- new water maker, new plumbing lines
- there is emergency steering by way of a tiller in the lazarette
- engine room camera

- Kanzaki transmission
- Engine control actuator
- Aquamet shaft, Michigan prop

## Electrical

---

### Electrical

- AC system is 115 volt
- DC system is 12 volt
- all electrical wiring has been replaced
- new zincs

## Electronics

---

- Furuno: Black box radar, display, black box chart plotter, GPS, Tri Data display, VHF Radio
- Icom VHF Radio
- Raymarine auto pilot and remote
- Big Bay monitors, PC
- Samsung LCD flat screen tv
- KVH M3 Satellite antenna
- Si-Tex AIS receiver
- Engine room camera

## Recreational & Safety Gear

---

- 1 Caribe 11 foot RIB with 2004 Johnson 15 hp outboard motor
- 2 complete sets of dive gear
- 6 snorkeling sets
- 4 scuba tanks
- Brownie hookah system with 4 hoses and regulators
- electric underwater scooter
- 2 inflatable kayaks
- barbeque mounted on stern rail
- large collection of fishing rods, reels, lures and Hawaiian slings

## Safety

- 12 adult PFDs, 3 childrens PFDs in like new condition
- horseshoe type throwing device on aft fly bridge rail
- EPIRB
- 8 hand held ABC extinguishers throughout vessel
- automatic fire extinguishing system installed in engine room with carbon monoxide detectors
- electric horn and bell at fly bridge
- LED running lights

## Description by Surveyor

---

The overall rating of this vessel is excellent for a vessel of this type and vintage. This is an outstanding renovation/upgrade done by an excellent team of craftsmen and an owner who knew what he wanted. This vessel is fit for many years of coastal and Caribbean cruising. The vessel is equivalent in condition and equipment to a brand new vessel. At the sea trial all systems functioned normally and as expected.

## Исключения

---

При продаже яхты исключаются личные вещи владельца.

## Отказ от ответственности

---

Компания предоставляет описание судна или яхты добросовестно, но не может гарантировать точность этой информации, а также не ручается за техническое состояние. Покупатель должен проинструктировать своих агентов или оценщиков исследовать представленную информацию более подробно, по собственному желанию. Продажа судна или яхты, изменение цены или снятие с продажи будет происходить без предварительного уведомления.

# ФОТОГРАФИИ



**Bow**



**Stidd chairs with cup holders**



**Fly bridge helm station with Furuno GPS Chartplotter, Radar, VHF, Autohelm, two (2) Flat Screen Monitors**



**Fly bridge helm station with Furuno GPS Chartplotter, Radar, VHF, Autohelm, two (2) Flat Screen Monitors**



**Stereo System**



**Flybridge helm station with two (2) Stidd Chairs upholstered in blue leather. Electrical Sub-Panel and brand new Seamark Canvas.**



**Bimini Top**



**Fly bridge settee with teak hi-lo coffee table.  
Freezer on starboard side.**



**Table with Convertible Leaves**



**Large freezer chest**



**Stidd helm chairs**



**Stern Area with Tender**



### Stern Area



### Seating Area with BBQ Grill (Covered)





### Aluminum Mast



### Furuno Navigational Equipment



### Tender with 15 hp Johnson engine



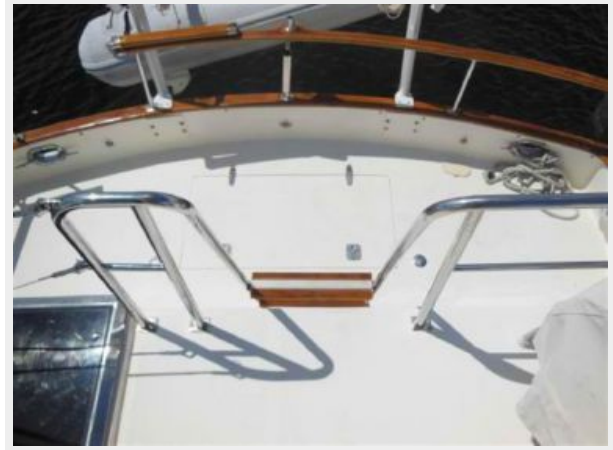
### Seating Area with BBQ Grill



**Lazarette**



**Stern Storage**



**Transom**



**Bow Area**



**Windlass**



**Anchor**



**Windlass**



**Master Stateroom**



**Ample Storage in Master Stateroom**



**Washer/Dryer Combo**



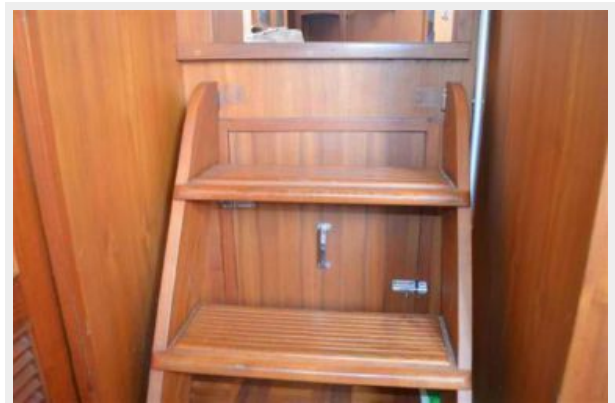
**Master Bed**



**Master**



**Master Stairway to Salon**



### Master Shower



### Master Head



**Master Stateroom Vanity, Grohe faucet, SS sink and custom cabinetry in teak with Wenge inserts.**



### Stairway from Salon to Master



**Master Bed**



**Master Bed**



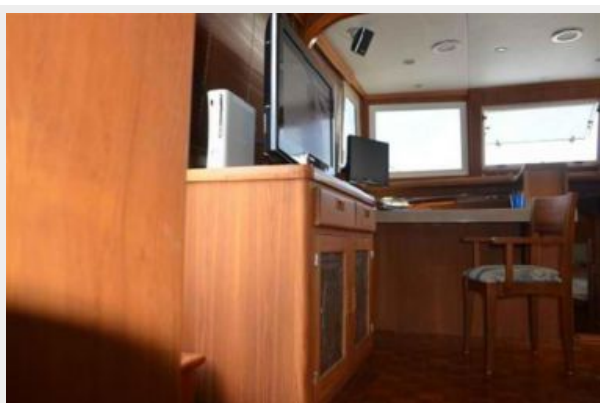
**Master Stateroom**



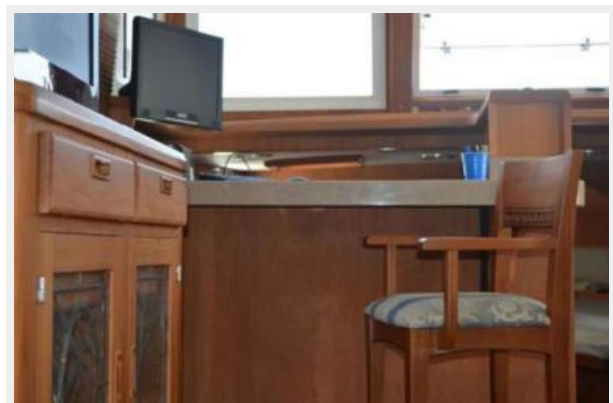
**Master - Natural Sunlight**



**Salon Desk Area**



**Salon Desk Area**



**Main Salon with settee upholstered in blue leather, custom solid teak table, closed.**



**L-Shaped Settee and Large Dining Table**



Main electrical distribution panel made of brushed aluminum with digital meters, backlit.



Entertainment center made of solid teak with antique glass leaded inserts and pull-out drawers for liquor cabinet.

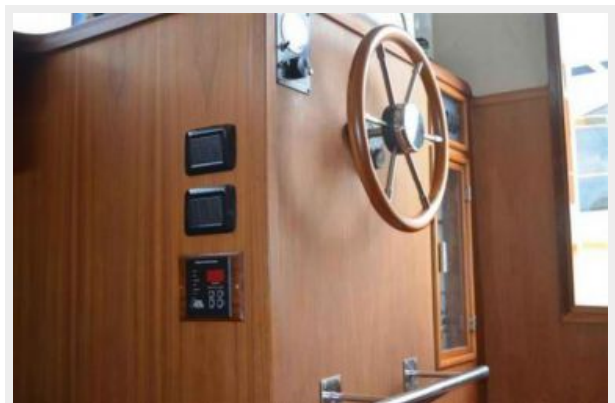




**Salon navigation station with on-board computer with navigation software, ship's log and custom teak chair.**

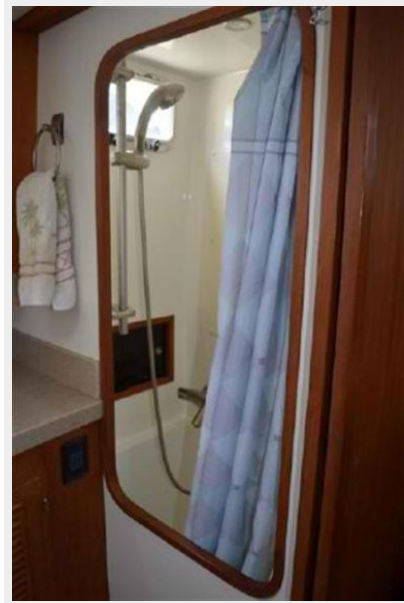


**Lower helm station with Furuno chart plotter and battery switch panel made of brushed aluminum.**









**Forward shower/tub with Grohe shower fixture.**





V Berth



V Berth



V Berth



V Berth



V Berth



V Berth



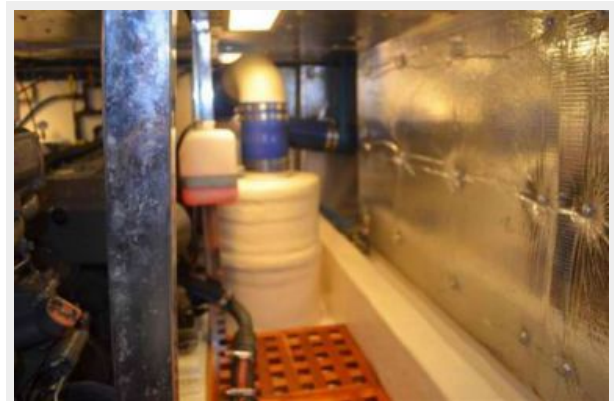
V Berth



### Main Engine Room with Yanmar Main Engine.



### Main Engine Room with Yanmar Main Engine.



### Yanmar Generator

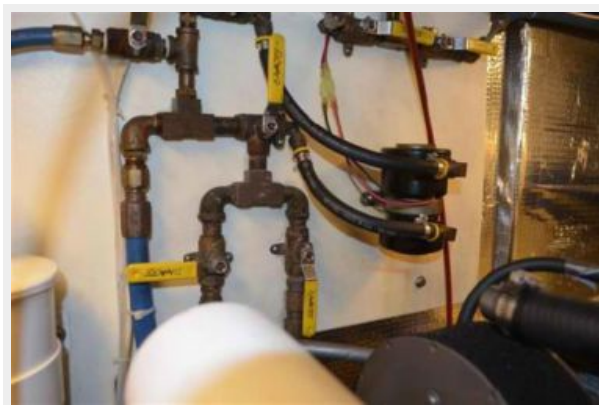
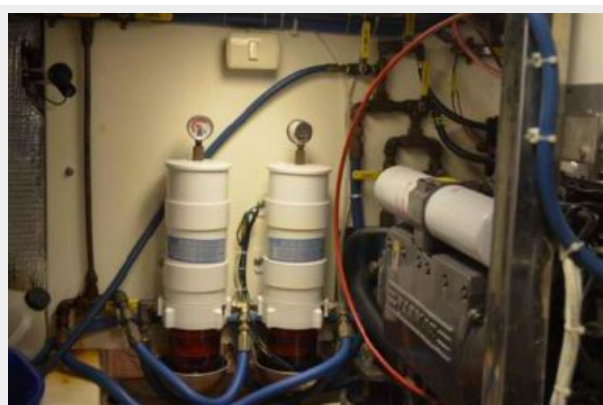




**Main Engine Room with Yanmar Main Engine.**







# КОНТАКТЫ

---

Андрей Шестаков (Andrey Shestakov) – ведущий яхтенный брокер отдела продаж яхт и судов компании Shestakov Yacht Sales Inc. Официальный представитель Shestakov Yacht Sales Inc. для русскоговорящих клиентов в центральном офисе компании в Майами/Форт Лодердейл/Флорида/США.

## Контактная информация

---

Email: [andrey@shestakovyachtsales.com](mailto:andrey@shestakovyachtsales.com)

Web: [shestakovyachtsales.com](http://shestakovyachtsales.com)

## Телефоны

---

Краснодарский край: **+7(918)465-66-44**

США, Майами, Флорида: **+1(954)274-4435**

## Время работы

---

Понедельник – Суббота: **9:00 - 21:00**  
EDT

Воскресенье: **Закрито**

## Адрес

---



Harbour Towne Marina, 850 NE 3rd St,  
STE 213, Dania, FL 33004