

NEPTUNE'S LADY — NEPTUNUS



Судостроитель: NEPTUNUS

Год постройки: 1995

Модель: Моторная яхта

Цена: **ЦЕНА ЯХТЫ ПО ЗАПРОСУ**

Местонахождение: United States

Длина общая: 55' 0" (16.76m)

Ширина: 15' 7" (4.75m)

Макс. осадка: 4' 10" (1.47m)

Крейс. скорость: 28 Kts. (32 MPH)

Макс. скорость: 33 Kts. (38 MPH)

Купить **Neptune's Lady — NEPTUNUS** а также выбрать подходящую вам яхту из нашего каталога яхт вам поможет опытный яхтенный брокер Андрей Шестаков. На сегодняшний день компания **Shestakov Yacht Sales Inc.** имеет большое количество яхт в собственном списке продаж, а также тесно сотрудничает со всеми крупными яхтенными производителями по всему миру.

Для того чтобы купить яхту **Neptune's Lady — NEPTUNUS** а также проконсультироваться по любому вопросу связанному с покупкой, продажей, чартером яхт позвоните по телефону **+7(918)465-66-44**.

ОГЛАВЛЕНИЕ

ОГЛАВЛЕНИЕ	2
ХАРАКТЕРИСТИКИ	4
Основная информация	4
Размеры	4
Скорость, вместимость и масса	4
Размещение	4
Корпус и палуба	4
Информация о двигателе	5
ПОДРОБНОЕ ОПИСАНИЕ	6
Accommodations	6
Galley & Salon	6
Deck Equipment	6
Engine/Mechanical Equipment	7
Bridge, Electronics and Navigation	7
Исключения	7
Отказ от ответственности	7
ФОТОГРАФИИ	9
Stern	9
Bow	9
Cockpit Overview	9
Huge cockpit with Nu-Teak decking	9
Entering Salon	9
Lower Station	10
Salon Sofa	10
Salon looking aft	10
Completely Updated Galley	10
Galley photo 2	10
Galley Dinette	10

Dinette photo 2	11
Galley looking FWD	11
MDP Panel	11
Cabin Stairwell	11
VIP Cabin	11
Huge Master Cabin	11
Cabin 3	12
Master Head w/separate shower	12
Guest Head w/separate shower	12
Bridge looking FWD	12
Aft Bridge Seating and Icemaker	12
Bridge Helm	12
Bridge Helm Seating	13
Lazarette	13
Lazarette photo 2	13
Fuel Tanks with filters and sight glass	13
Generator	13
Engine room photo 1	13
Engine room photo 2	14
Engine room photo 3	14
Engine room photo 4	14
Bottom Service and Wax 4/2014	14
КОНТАКТЫ	15
Контактная информация	15
Телефоны	15
Время работы	15
Адрес	15

ХАРАКТЕРИСТИКИ

Основная информация

Тип судна: Моторная яхта

Подкатегория: Flybridge

Модельный год: 1995

Год постройки: 1995

Страна: United States

Размеры

Длина общая: 55' 0" (16.76m)

Ширина: 15' 7" (4.75m)

Макс. осадка: 4' 10" (1.47m)

Скорость, вместимость и масса

Крейс. скорость: 28 Kts. (32 MPH)

Макс. скорость: 33 Kts. (38 MPH)

Водоизмещение: 50600 Pounds

Вместимость воды: 180 Gallons

Вместимость сточного бака: 90 Gallons

Объем топливного бака: 815 Gallons

Размещение

Всего кают: 3

Всего коек: 4

Всего ком. состава: 2

Корпус и палуба

Материал корпуса: Fiberglass

Информация о двигателе

Двигатели: 2

Производитель: Detroit Diesel

Модель: 8V92

Тип двигателя: Inboard

Тип топлива: Diesel

ПОДРОБНОЕ ОПИСАНИЕ

Accommodations

Master Stateroom The master stateroom features a walk around Queen berth with a full array of drawers and lockers below (all with European push lock mechanisms), a 20" Sharp flat screen television with DVD player on the starboard side, hanging lockers on port and starboard and a port side vanity with mirror. Also included is an individual volume control knob for the wall speakers. The large private ensuite head includes an over sized stall shower.

Guest Stateroom The Guest stateroom features a Queen berth against the starboard hull, a hanging locker and a 20" Sharp flat screen television with a DVD player.

Guest Stateroom Bunk This third stateroom features upper and lower berths, a full size hanging locker and a combination clothes washer/dryer. All staterooms offer excellent quality fabrics and carpeting throughout. The new headliner is a very light beige high quality marine grade vinyl and the cabinet furniture throughout is ash wood finished with Ralph Lauren Regent Metallics Brun luxueux. Lighting is indirect and direct halogen with custom European fixtures. All three staterooms and the salon have their own air conditioning controls with temperature and airflow capacity.

Each stateroom offers portholes for ventilation and light with custom screens for fresh air and blinds for privacy. The bathrooms are huge in size with high quality Raritan heads; under-mount sinks built into Corian counter tops and the floors are a wood grain material accented by gold inlay striping and over sized shower stalls.

Galley & Salon

Galley All of the appliances were installed new in 2006. Two below the counter Jenn Air refrigerators. Chest freezer in lazarette Convection/Microwave Jenn Air oven Ceramic Jenn Air stove top Various cupboard and drawers provide very ample storage space.

Salon The salon features a U-shaped ultra leather couch, custom coffee table, storage space on the port side with built in bar unit, AM/FM DVD CD with 4 surround sound speakers by Sony and sub woofer below cabinet for full bass sound. The entertainment center also includes a 27" Sharp flat screen television with a VCR/DVD and AM/FM CD cassette. The windows are tinted security glass in bronze anodized frames. The door is white anodized aluminum framed with the same tinted security glass. Neptune's Lady is accented with Ralph Lauren Regent Metallics Brun luxueux finish ash wood; ceiling and wall coverings are done in the very light beige high quality marine grade vinyl and the carpet is a neutral tone with green and blue nautical runners.

Deck Equipment

Cockpit deck box with cushions Recessed lights in cockpit overhang and radar arch Hatch to access chain locker Bronze struts and rudders Courtesy lights on flybridge, swim platform and on staircase Swim platform door Electric windlass with 120 feet galvanized chain Zinc anodes mounted in various places Hardtop with new Strata glass enclosures in 2006 66 lb Bruce anchor Built-in staircase to flybridge Stainless steel bow pulpit Windshield and side windshield covers, both textalene/stamoid Cable master Marquipt davit on swim platform EPIRB Airhorn Bow locker Eight heavy duty mooring cleats Hot and cold water shower on swim platform Solid flybridge windshield, washers and wipers Hydraulic bow thruster Complete white sunbrella cover for entire flybridge Cup holders located throughout decks

Engine/Mechanical Equipment

Chilled water reverse cycle air conditioning with 5 air handlers and digital control settings Added direct expansion 18000 BTU Cruisair self contained reverse cycle air conditioner and heat unit in salon in 2006. Hydraulic bow thruster 2" heavy duty insulation Bronze 3 way toilet valving Oil change unit for main engines Spare props Raw water sea strainers Trim tabs Engine room blower system Engine alarm/emergency stop Engines mounted on vibration pads Halon fire control system with bypass Fresh water cooling system with silencers Emergency fuel shut off valve Fuel tank drains Double Racor manifolds Baffled aluminum tanks – completely redone in 2006 Stainless steel shafts Strong dripless shaft seals

Bridge, Electronics and Navigation

Bridge Robertson autopilot AP300x Garmin GPS MAP 3210 Furuno 48 mile radar CD player Bow thruster controls Trim tab controls DDEC single lever control DDEC engine monitors Furuno color fish finder Furuno Nav/Plotter interface Fuel gauges Rudder indicator Magnetic compass ICOM VHF Sink and ice maker Intercom Hailer Searchlight controls Captain and first mate chairs U-shaped seating for 6 to 8

Electronics and Navigation B&G speed/depth/temperature gauge Robertson autopilot AP300X Furuno 48 mile radar Searchlight control Trim tab control Garmin GPS MAP 3210 ICOM VHF DDEC engine monitors DDEC single lever controls

Исключения

При продаже яхты исключаются личные вещи владельца.

Отказ от ответственности

Компания предоставляет описание судна или яхты добросовестно, но не может гарантировать точность этой информации, а также не ручается за техническое

состояние. Покупатель должен проинструктировать своих агентов или оценщиков исследовать представленную информацию более подробно, по собственному желанию. Продажа судна или яхты, изменение цены или снятие с продажи будет происходить без предварительного уведомления.

ФОТОГРАФИИ



Stern



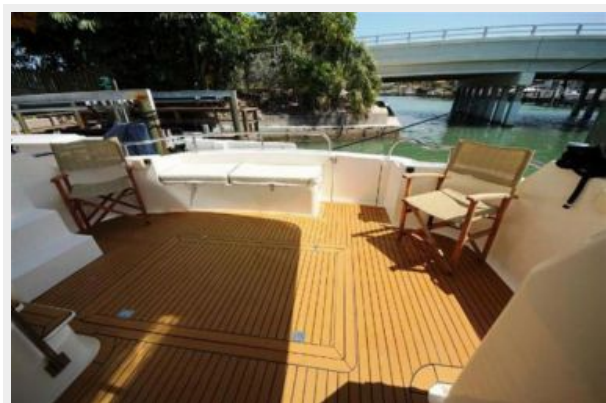
Bow



Cockpit Overview



Huge cockpit with Nu-Teak decking



Entering Salon



Lower Station



Salon Sofa



Salon looking aft



Completely Updated Galley



Galley photo 2



Galley Dinette



Dinette photo 2



Galley looking FWD



Cabin Stairwell



MDP Panel



Huge Master Cabin



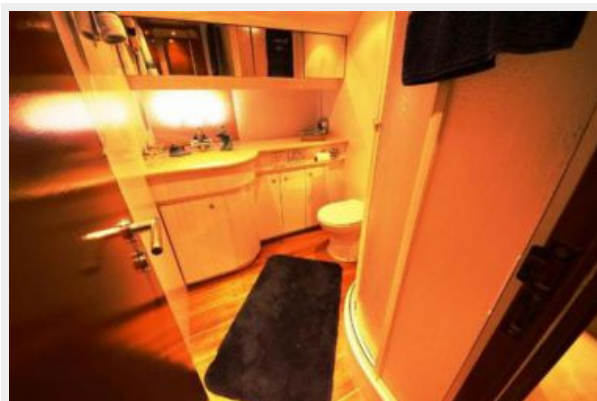
VIP Cabin



Cabin 3



Master Head w/separate shower



Guest Head w/separate shower



Bridge looking FWD



Aft Bridge Seating and Icemaker



Bridge Helm



Bridge Helm Seating



Lazzarette



Lazzarette photo 2



Fuel Tanks with filters and sight glass



Generator



Engine room photo 1



Engine room photo 2



Engine room photo 3



Engine room photo 4



Bottom Service and Wax 4/2014



КОНТАКТЫ

Андрей Шестаков (Andrey Shestakov) – ведущий яхтенный брокер отдела продаж яхт и судов компании Shestakov Yacht Sales Inc. Официальный представитель Shestakov Yacht Sales Inc. для русскоговорящих клиентов в центральном офисе компании в Майами/Форт Лодердейл/Флорида/США.

Контактная информация

Email: andrey@shestakovyachtsales.com

Web: shestakovyachtsales.com

Телефоны

Краснодарский край: **+7(918)465-66-44**

США, Майами, Флорида: **+1(954)274-4435**

Время работы

Понедельник – Суббота: **9:00 - 21:00**
EDT

Воскресенье: **Закрето**

Адрес



Harbour Towne Marina, 850 NE 3rd St,
STE 213, Dania, FL 33004