

РОСО МАС — VIKING



Судостроитель: VIKING

Год постройки: 2008

Модель: Катер для спортивной рыбалки

Цена: ЦЕНА ЯХТЫ ПО ЗАПРОСУ

Местонахождение: United States

Длина общая: 52' 0" (15.85m)

Крейс. скорость: 32 Kts. (37 MPH)

Макс. скорость: 35 Kts. (40 MPH)

Купить **Росо Мас — VIKING** а также выбрать подходящую вам яхту из нашего каталога яхт вам поможет опытный яхтенный брокер Андрей Шестаков. На сегодняшний день компания **Shestakov Yacht Sales Inc.** имеет большое количество яхт в собственном списке продаж, а также тесно сотрудничает со всеми крупными яхтенными производителями по всему миру.

Для того чтобы купить яхту **Росо Мас — VIKING** а также проконсультироваться по любому вопросу связанному с покупкой, продажей, чартером яхт позвоните по телефону **+7(918)465-66-44**.

ОГЛАВЛЕНИЕ

ОГЛАВЛЕНИЕ	2
ХАРАКТЕРИСТИКИ	5
Обзор	5
Основная информация	5
Размеры	5
Скорость, вместимость и масса	5
Размещение	5
Корпус и палуба	6
Информация о двигателе	6
ПОДРОБНОЕ ОПИСАНИЕ	7
Salon/Galley/Dinette	7
Master Suite	7
Companionway	7
Forward Guest Suite	7
Starboard Guest Suite	7
Fly Bridge	8
Tuna Tower	8
Electronics and Navigational Equipment	9
Cockpit	9
Fore Deck	9
Electrical System	10
Engine/Mechanical Equipment	10
Исключения	11
Отказ от ответственности	11
ФОТОГРАФИИ	12
Port profile	12
Bow profile	12
Bow profile	12

Bow profile	12
Stern	13
Salon	13
Salon	13
Salon	13
Salon	14
Salon	14
Galley	14
Galley	14
Dinette	15
Master Stateroom	15
Master Stateroom	15
Master Stateroom	15
Master Head	16
Forward VIP Stateroom	16
Guest Head	16
Forward VIP Stateroom	16
Guest Stateroom	17
Guest Stateroom	17
Laundry	17
Engine room	17
Engine room	18
Engine room	18
Engine room	18
Engine room	18
Engine room	19
Engine room	19
Cockpit	19
Cockpit	19

Cockpit	19
Cockpit	19
Flybridge	20
Flybridge	20
Flybridge	20
КОНТАКТЫ	21
Контактная информация	21
Телефоны	21
Время работы	21
Адрес	21

ХАРАКТЕРИСТИКИ

Обзор

This beautiful "Ice Blue" 52' Viking is extremely well equipped and her many custom features set "Poco Mas" apart from other 52s. She is powered by 1360 hp common rail MANs and she has the extra fuel capacity option. She is fully fish rigged with a Palm Beach tower, 41' outriggers, two livewells, Murraychair, ice chipper and watermaker. Her décor is exquisite and she has the queen bed VIP.

OWNER WILL CONSIDER 35' - 40' CENTER CONSOLE TRADE!

Основная информация

Тип судна: Катер для спортивной рыбалки

Модельный год: 2008

Год постройки: 2008

Страна: United States

Размеры

Длина общая: 52' 0" (15.85m)

Скорость, вместимость и масса

Крейс. скорость: 32 Kts. (37 MPH)

Макс. скорость: 35 Kts. (40 MPH)

Вместимость воды: 205 Gallons

Вместимость сточного бака: 50 Gallons

Объем топливного бака: 1400 Gallons

Размещение

Всего кают: 3

Корпус и палуба

Материал корпуса: Fiberglass

Информация о двигателе

Двигатели: 2

Производитель: MAN

Модель: D2842LE423

Тип двигателя: Inboard

Тип топлива: Diesel

ПОДРОБНОЕ ОПИСАНИЕ

Salon/Galley/Dinette

On the main deck an amazing living area beckons you to relax. Aft to port is a very comfortable, upgraded sofa (with storage beneath) and a custom ottoman. To starboard is the entertainment center with Bose home theater audio/video system. Forward to port is the galley which features granite countertops, under counter Sub Zero refrigerator and freezer with ice maker, Kenyon (4) burner glass top stove, Sharp microwave/convection oven, Kenmore trash compactor, Miele coffee maker and an array of slide out, swinging door, and drawer storage areas. Custom Amtico flooring is fitted in the galley, dinette, and the salon entry. Opposite the galley is the very functional 5-6 place dinette which also has storage beneath and a custom teak table, pedestal and base ring. Forward of the dinette is the 32" Sharp television.

Master Suite

Located amidships to port is the spacious and comfortable master suite. A queen berth with an upgraded mattress is flanked by night stands. Outboard is a bank of drawers and double hanging locker. A chest style drawer stack is forward, as is the television. Immediately forward is the private head with stall shower. Upgraded shower door, Amtico flooring, teak vanity and mirror treatments are implemented here. An overhead hatch provides natural light and ventilation in the stateroom. Storage is provided under the berth.

Companionway

Aft to starboard in the companionway is the concealed Whirlpool washer and dryer. Forward to starboard is access to the starboard head for day use.

Forward Guest Suite

This cabin features a queen berth, upgraded mattress, television, hanging locker, ample door and drawer storage, and a large deck access hatch which provides natural light and ventilation. Aft to starboard is access to the semi private head with stall shower.

Starboard Guest Suite

Highlights include upper and lower berths, hanging locker, custom storage beneath the lower berth, drawer storage, and an overhead hatch which provides natural light and ventilation. Access is immediately forward to the semi private head with stall shower.

Fly Bridge

- Bluewater teak helm and companion chair with covers
- Clarion AM/FM/CD player
- (6) Rod rocket launcher on aft flybridge rail
- Teak helm pod
- Single lever controls (Rexroth)
- Power assist steering
- Recessed electronics boxes
- Fresh water outlet
- Insulated drink box in starboard sea
- Seasafe 6-man liferaft in canister
- Overhead rod storage locker in hardtop
- (2) Miya Epoch US - 9 electric teaser reels
- 3-sided enclosure (New in May 2014)

Tuna Tower

- Radar pod
- electric teaser reels
- quartz lights fore and aft
- molded standing platform
- molded sunshade
- bench seat with back rest
- molded in navigation lights
- wash down water in tower
- center rigger
- (3) rod holders on each tower leg
- Undersides of both hardtops painted Ice Blue
- 5" Ritchie compass
- ICOM boom mic
- Navnet display.

Electronics and Navigational Equipment

- (2) Furuno Navnets
- Garmin 5212 touch screen chart plotter
- Furuno 72 mile radar
- Furuno auto pilot
- (2) Icom M604 VHF radios
- Furuno color sounder
- Furuno RD 30 knot log/temp
- KVH tracphone
- KVH satellite TV with three receivers
- Garmin GXM51 XM weather
- 5" Ritchie compass
- ICOM boom mic in salon
- Mortiz system monitor

Cockpit

- Release teak fighting chair with cover/rocket launcher
- Pipewelders 41' triple spreader outriggers
- Transom door with gate
- Large under deck fish box
- (4) Rod holders
- Transom fish box with live well and window
- Refrigerated salon step box
- Tackle center with freeze
- Starboard tackle center
- Refrigerated salon access step
- Cockpit speakers
- Live bait well in cockpit sole
- Transom swim steps
- Awlgripped lazarett
- Custom cushions with backrests and drink holders for tackle center
- Cockpit shade cover
- (2) 12 volt electric reel plugs
- Back-up live well pump
- Cockpit courtesy lights

Fore Deck

- Lewmar Anchor windlass

- Bow pulpit and rail
- Fresh water inside anchor locker
- Awlgripped anchor locker

Electrical System

- Onan 21.5 kW generator (2750 hrs)
- Iso-boost transformer for 50A shorepower
- 50 amp Dockside electrical cables with Glendinning cablemaster
- (3) Battery banks
- 12V / 24V DC Electrical system
- 120V / 240V AC Electrical system - 60HZ
- Glendinning cablemaster for 50 amp shorepower
- Newmar 45 amp/24 volt automatic battery charger
- Newmar 95 amp/24 volt automatic battery charger
- Battery isolator switches
- Battery parallel switch
- (8) 12 volt Group 31 batteries (4 starting/ 4 house)
- Telephone and TV dockside connectors

Engine/Mechanical Equipment

- Twin 1360hp Common Rail MAN engines
- Awlgripped engine room
- Sea Recovery Aquamatic watermaker/700 GPD
- Eskimo Ice chipper
- Dual Racor fuel filters on main engines
- Delta T system
- Oil change system with remote in cockpit
- Fuel priming pumps
- Pumps and thru hulls are awlgripped
- (4) Cruisair Air Conditioning units

- Emergency engine stop
- Synchronizers
- Trim tabs
- Electronic trolling valves
- Power assist steering
- Auxiliary fuel tank / 200 gallons for a total of 1400 gallons
- Side power Bow thruster
- Seafire FM200 fire extinguisher system
- Emergency engine driven crash pumps
- 5-bladed "Veem" propellers
- 3" stainless steel shafts
- ZF 665A transmissions
- 20 gallon Raritan electric water heater
- (4) underwater lights
- Fuel transfer pump
- Central vacuum system
- Pressure and dockside fresh water system
- Electric salon door
- Vac - u - Flush toilets
- Sea cocks and external sea strainers
- Engine room guages
- Engine room start and stop switches
- Tool box
- Engine room blowers
- Engine room circulation fans
- Single racor fuel filter - generator
- MAN 2000 hour service completed January 2015

Исключения

При продаже яхты исключаются личные вещи владельца.

Отказ от ответственности

Компания предоставляет описание судна или яхты добросовестно, но не может гарантировать точность этой информации, а также не ручается за техническое состояние. Покупатель должен проинструктировать своих агентов или оценщиков исследовать представленную информацию более подробно, по собственному желанию. Продажа судна или яхты, изменение цены или снятие с продажи будет происходить без предварительного уведомления.

ФОТОГРАФИИ

Port profile



Bow profile



Bow profile



Bow profile



Stern



Salon



Salon



Salon



Salon



Salon



Galley



Galley



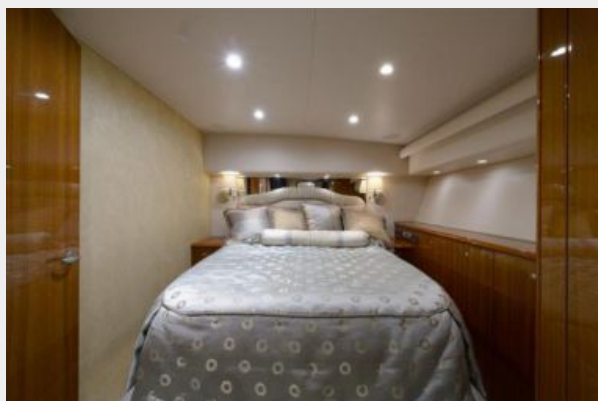
Dinette



Master Stateroom



Master Stateroom



Master Stateroom



Master Head



Forward VIP Stateroom



Guest Head

Forward VIP Stateroom



Guest Stateroom



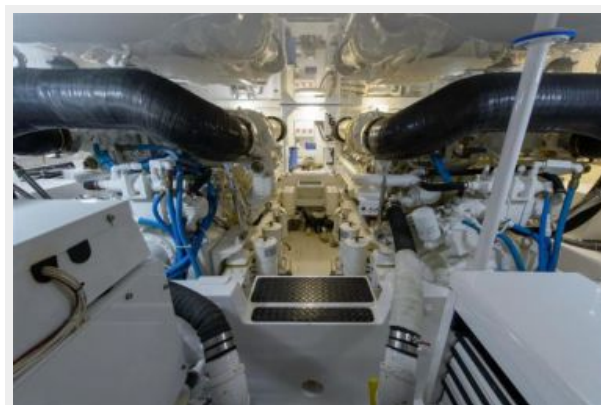
Guest Stateroom



Laundry



Engine room



Engine room



Engine room



Engine room



Engine room



Engine room



Engine room



Cockpit



Cockpit



Cockpit



Cockpit



Flybridge



Flybridge



Flybridge



КОНТАКТЫ

Андрей Шестаков (Andrey Shestakov) – ведущий яхтенный брокер отдела продаж яхт и судов компании Shestakov Yacht Sales Inc. Официальный представитель Shestakov Yacht Sales Inc. для русскоговорящих клиентов в центральном офисе компании в Майами/Форт Лодердейл/Флорида/США.

Контактная информация

Email: andrey@shestakovyachtsales.com

Web: shestakovyachtsales.com

Телефоны

Краснодарский край: **+7(918)465-66-44**

США, Майами, Флорида: **+1(954)274-4435**

Время работы

Понедельник – Суббота: **9:00 - 21:00**
EDT

Воскресенье: **Закрито**

Адрес



Harbour Towne Marina, 850 NE 3rd St,
STE 213, Dania, FL 33004