

OBSESSION — SEA RAY



Builder: [SEA RAY](#)

Year Built: 1998

Model: Motor Yacht

Price: PRICE ON APPLICATION

Location: United States

LOA: 48' 0" (14.63m)

Beam: 15' 3" (4.65m)

Max Draft: 3' 9" (1.14m)

Our experienced yacht broker, Andrey Shestakov, will help you choose and buy a yacht that best suits your needs **OBSESSION — SEA RAY** from our catalogue. Presently, at Shestakov Yacht Sales Inc., we have a wide variety of yachts available on our sale's list. We also work in close contact with all the big yacht manufacturers from all over the world.

If you would like to buy a yacht **OBSESSION — SEA RAY** or would like help answering any questions concerning purchasing, selling or chartering a yacht, please call **+1(954)274-4435**

TABLE OF CONTENTS

TABLE OF CONTENTS	2
SPECIFICATIONS	4
Overview	4
Basic Information	9
Dimensions	9
Speed, Capacities and Weight	10
Accommodations	10
Hull and Deck Information	10
Engine Information	10
DETAILED INFORMATION	11
Manufacturer Provided Description	11
Manufacturer Provided Original Equipment List	12
Broker Overview and Walkthrough	14
Cockpit & Flybridge	14
Topsides	15
Salon & Staterooms	15
Galley	16
Deck & Hull	16
Electrical Equipment	17
Electronics	17
Engines & Machinery	17
Exclusions	17
Disclaimer	17
PHOTOS	18
Manufacturer Provided Image	18
CONTACTS	31
Contact details	31
Telephones	31

Office hours	31
Address	31

SPECIFICATIONS

Overview

"Obsession" A 2 OWNER 480, Current 2nd owner has smaller Express now as his Primary Boat. He has owned her for 12 years since 2001 and used her very lightly. "Obsession" is in good condition requiring Carpeting, some TLC and a major detail,wax and buff. This Searay 480 SEDAN BRIDGE has ONLY 789 hours use on her Twin Caterpillar 3196TA/ 640HP Engines (Important CAT 3196 Recall DONE), the Generator was just overhauled with New winding,stater and cooling system flush 7/22/2015) The 480 Sedan Bridge features a huge 3 stateroom interior layout with 2 Queen Staterooms and a 3rd guest stateroom with a settee/bunk arrangement and 2 Full sized heads. Her elegant salon features a breakfast bar to starboard with fully equipped galley forward, convertible L-shaped sofa to port and forward of the sofa a conventional face to face plush dinette. There are 3 staterooms and 2 heads down forward in the lower cabin.

Manufacturer Provided Description

There's no need to travel to exotic locations to get away from it all, for in the Sea Ray 480 Sedan Bridge, there's a vacation haven right by the dock. This yacht offers plenty of luxurious living space indoors in the well-appointed cabin, and outside on the stunning command bridge, easily accessed up a molded stairway. With a fiberglass hardtop and full enclosure, the command bridge is the perfect place to entertain. Curved bench seating forward of the helm gives guests a spectacular view while they enjoy the premium Clarion AM-FM digital cassette stereo with a six-disc CD changer, subwoofer, and six speakers with cockpit remote control. Guests can stretch out and relax in the sun around a bridge cocktail table that converts to a sunpad by adding their matching filler cushions. Guests can also help themselves to food and beverages from the fully appointed wet bar - with its built in ice maker - or lounge on the forward deck sunpad. . The console is large enough to house a tremendous amount of instrumentation, including a digital LCD systems monitor, Technical features on the Sea Ray 480 Sedan are complete with an engine synchronizer, crossover fuel and charging system, 10 kW generator with sound box, dockside power through a Glendinning cablemaster and wireless remote, plus a Raytheon electronics package. A Power Pac exhaust system with lift system mufflers helps keep engine noise to a minimum, particularly in the cabin area. Impeccably designed, the cabin affords travelers easy movement throughout with molded steps to the bridge and deck, plus convenient transom door access to the extra large swim platform. Below, there's a plush forward master stateroom with a full-size pedestal bed, enclosed gunwale cabinets, and an entertainment center with a color TV - VCR combination. There's also a fully equipped private head with a circular shower and VacuFlush toilet. The portside guest stateroom with its full-size bed, circular skylight and private head and shower is so large, the owner might be tempted to use it as the master suite. There's even a third stateroom to starboard with double bunks and a washer - dryer combination. The salon is extremely livable with an electric convertible sofa and an entertainment center equipped with a TV and VCR,

Clarion AM-FM digital cassette and CD stereo with six-disc changer and six speakers. The galley is also fully equipped with a flush-mounted three-burner electric stove, microwave - convection oven, coffee maker, plus a refrigerator and freezer set under the counter. There's also a dinette for four opposite the galley. The 480 Sedan Bridge is powered by twin 660 horsepower Caterpillars (CAT3196TA) and superbly constructed with high-performance vinylester resin, 316 stainless steel bow and deck rails, and a self-bailing fiberglass cockpit with a gas-assisted bilge service hatch. Even underwater, it's protected by seacocks on all fittings and dripless shaft logs.

Broker Overview and Walkthrough

Searay got it right with the 480 SEDAN BRIDGE, one of the best looking convertible cruisers of the era and manufactured from 1998 through 2004. Built on a fully cored hull with prop pockets to reduce the shaft angles, the 480 boasts a surprisingly large interior for a boat in her size range. Step through the sliding glass door to a spacious salon with its convertible L-shaped electric convertible sofa, dinette and built in entertainment center. Opposite the large galley is designed with an island style breakfast bar and under counter refrigerator and freezer all concealed behind beautiful cabinetry. Large wrap around forward salon and side windows make the salon and upper cabin, galley appear huge, bright and inviting and Searay did a great job with lighting throughout the interior of the boat. Down 3 steps forward in the lower cabin are 3 staterooms, 2 queen staterooms and one convertible settee/bunk stateroom with built in washer/dryer as well as 2 large heads both with stall showers. There is plenty of drawer and hanging locker storage. The master stateroom is forward with a private and spacious ensuite head.

COCKPIT and FLYBRIDGE:

From the cockpit a molded in staircase leads to the bridge where wrap-around lounge seating is located forward of the helm as well as a Wetbar with icemaker. Aft of the console are helm and companion swivel seats built on top of a large molded lockable storage box for plenty of flybridge storage. There is an overhead opening hatch in the Hardtop. The cockpit features a fold away aft seat across the transom, transom door, built in storage and live well in transom, transom "trunk" storage for Glendenning cablemaster, CATV inlet, a hot/cold shower and a large storage compartment to starboard outside of salon entry door.

Exterior and Interior Accommodations

Exterior & Interior Accommodations

The 480 SDB sports an unmistakably Sea Ray profile, with flowing, graceful lines and with a layout that promises uncompromising accommodations.

TOPSIDES

A gently sloped, wide staircase leads from the cockpit level to the bridge, home to your

"underway" entertainment.

Captain and companion can be seated at the helm in matching Sea Ray swivel captain's chairs, each with footrest and flip-up bolster. The broad helm console displays all electronic components within easy sight and reach and contains built-in storage beneath.

Forward of the console you will find very large wrap-around lounge, with serving table and storage, adjoined by a forward wet bar with built in refrigerator.

Sea Ray's stylish hardtop includes recessed lighting and an overhead vent hatch, plus sturdy support for the enclosure. The enclosure features a number of zip-outs to allow cool breezes to refresh you.

At cockpit level, you will find plenty of open floorspace, a large hatch for engine room access and a very comfortable transom bench, also with storage below. Molded cockpit steps lead onto each gunwale, with a wide side deck leading to the forward sunning area.

SALON & STATEROOMS

A large slider gains entry to the salon from the cockpit. With a broad windshield forward and large windows all around, the 480 SDB invites you aboard with bright vistas, but can also provide all of the needed privacy with luxurious drapes, blinds and appropriate windshield covers.

Features Sea Ray's Cherry Vitracore interior.

To the portside of the salon is an elongated lounge, which will extend to a sleeper with the touch of a button. A dual-leaf hi-low table serves cocktails or snacks at that lounge and the lounge faces the starboard entertainment and storage cabinet center. Forward of the lounge is the dinette, elevated to window level for great views and easy access, ready to serve four in comfort.

The galley is forward in the salon, to starboard. All appliances are hidden away by the glittering cabinetry, including side-by-side refrigerator and freezer.

Step down and forward to the stateroom companionway. To the portside, find the spacious guest stateroom, with full-size berth, cedar-lined hanging locker, skylight and private access to the guest head. The guest head compartment includes a stall shower, head, nicely appointed vanity and additional access from the companionway.

To starboard, the bunk guestroom includes two lower-level bunks, which can be used as a sitting area, plus additional storage and the built-in washer-dryer combo.

The master stateroom is fully forward, with full size pedestal bed, dual hanging lockers, entertainment center and the full range of Sea Ray's traditionally abundant luxuries. The ensuite private head compartment includes a larger shower, vanity and head. Guest and

master staterooms include coordinated comforters and pillows.

Galley

- Bar
- Stove
- Convection/microwave oven
- Fresh water system
- Water heater
- Central vacuum system
- Stainless steel Sink
- Simulated granite counter

Deck and Hull

- Fiberglass Hardtop with overhead hatch(NOTE: No enclosure)
- Molded in stairwell cockpit to bridge
- Swim Platform with ladder
- Transom Door
- Dockside water Connection
- Hot/cold shower in Cockpit
- CATV inlet,cockpit
- Fold Away Aft Cockpit Bench seat
- 6 Rod Holders
- Anchor windlass, Anchor and Chain
- Transom Livewell
- Transom Fishbox
- Transom "trunk storage" locker
- Weaver Dinghy Davits
- Lines, Fenders, Docklines. Life Jackets
- Stainless steel Bow and Safety Rails

Electrical Equipment

- 10 KW Westerbeke Generator with 845 original hours(Rebuilt with new winding,stater,cooling system flushed 7/22/2015)
- 110 Volt AC Shorepower with 50 Amp Service
- 12 Volt DC Ship power
- Glendenning Cablemaster Auto Rewind

Electronics

- Raymarine E120 Radar
- Icom M302 VHF Radio
- Raytheon R41 XX Radar
- Furuno GP-1850 WDF Chart Plotter
- Raytheon RAYDATA Depth,Speed,Log
- Bennett Trim Tab Indicators

- **ACL RCL100 Twin Beam Searchlight**
- **Caterpillar Electronic Engine Display Monitors**
- **VETUS Bow thruster**
- **Clarion CD/DVD Stereo Entertainment system**
- **TV's in Salon, Master Stateroom, Guest Stateroom 1, Guest stateroom 2**

Engines and Machinery

- **3 Zone 30,000 BTU Air Conditioning/Heat**
- **Automatic Oil changing system**
- **Sea water Strainers Engines, Generator, Air conditioning system**

Disclaimer

The Company offers the details of this vessel in good faith but cannot guarantee or warrant the accuracy of this information nor warrant the condition of the vessel. A buyer should instruct his agents, or his surveyors, to investigate such details as the buyer desires validated. This vessel is offered subject to prior sale, price change, or withdrawal without notice.

Measurements Speed and Distance

Dimensions

LOA: 51 ft 2 in

Beam: 15 ft 3 in

Min. Draft: 3 ft 9 in

Weight

Dry Weight: 40400 lb

Miscellaneous

Deadrise at Transom: 15 °

Trim Tabs: No

Tanks

Fuel Tanks Capacity: 500 gal

Fresh Water Tanks Capacity: 140 gal

Holding Tank Capacity: 68 gal

Accomodations

Number of single berths: 8

Number of Cabins: 3

Number of Heads: 2

Propulsion

#1 Engine Make: Caterpillar 3196TA

Engine Year: 1998

Primary Engines: Inboard

Power: 660 hp

Hours: 789

Location: Port

Engine Model: Caterpillar 3196TA

Fuel Type: Diesel

Drive Type: Direct Drive

#2 Engine Make: Caterpillar 3196TA

Engine Year: 1998

Primary Engines: Inboard

Power: 660 hp

Hours: 789

Location: Starboard

Engine Model: Caterpillar 3196TA

Fuel Type: Diesel

Drive Type: Direct Drive

Basic Information

Category: Motor Yacht

Sub Category: Flybridge

Model Year: 1998

Year Built: 1998

Country: United States

Fly Bridge: Yes

Cockpit: Yes

Dimensions

LOA: 48' 0" (14.63m)

Beam: 15' 3" (4.65m)

Max Draft: 3' 9" (1.14m)

Speed, Capacities and Weight

Displacement: 40400 Pounds

Water Capacity: 140 Gallons

Holding Tank: 68 Gallons

Fuel Capacity: 500 Gallons

Accommodations

Total Cabins: 3

Total Berths: 8

Total Heads: 2

Hull and Deck Information

Hull Material: Fiberglass

Engine Information

Engines: 2

Manufacturer: Caterpillar

Model: 3196TA

Engine Type: Inboard

Fuel Type: Diesel

DETAILED INFORMATION

Manufacturer Provided Description

There's no need to travel to exotic locations to get away from it all, for in the Sea Ray 480 Sedan Bridge, there's a vacation haven right by the dock. This yacht offers plenty of luxurious living space indoors in the well-appointed cabin, and outside on the stunning command bridge, easily accessed up a molded stairway. With a fiberglass hardtop and full enclosure, the command bridge is the perfect place to entertain. Curved bench seating forward of the helm gives guests a spectacular view while they enjoy the premium Clarion AM-FM digital cassette stereo with a six-disc CD changer, subwoofer, and six speakers with cockpit remote control. Guests can stretch out and relax in the sun around a bridge cocktail table that converts to a sunpad by adding their matching filler cushions. Guests can also help themselves to food and beverages from the fully appointed wet bar - with its built in ice maker - or lounge on the forward deck sunpad. An optional bridge layout plan adds even more room for lounging with a U-shaped bridge seat with aft sunpad, and a portside helm station with dual companion seat. The console is large enough to house a tremendous amount of instrumentation, including a digital LCD systems monitor, while two captain's chairs provide absolute comfort. The captain can pilot in total confidence, too. Technical features on the Sea Ray 480 Sedan are complete with an engine synchronizer, crossover fuel and charging system, 10 kW generator with sound box, dockside power through a Glendinning cablingmaster and wireless remote, plus a Raytheon electronics package. A Power Pac exhaust system with lift system mufflers helps keep engine noise to a minimum, particularly in the cabin area. Impeccably designed, the cabin affords travelers easy movement throughout with molded steps to the bridge and deck, plus convenient transom door access to the extra large swim platform. Below, there's a plush forward master stateroom with a full-size pedestal bed, enclosed gunwale cabinets, and an entertainment center with a color TV - VCR combination. There's also a fully equipped private head with a circular shower and VacuFlush toilet. The portside guest stateroom with its full-size bed, circular skylight and private head and shower is so large, the owner might be tempted to use it as the master suite. There's even a third stateroom to starboard with double bunks and a washer - dryer combination. The salon is extremely livable with an electric convertible sofa and an entertainment center equipped with a TV and VCR, Clarion AM-FM digital cassette and CD stereo with six-disc changer and six speakers. The galley is also fully equipped with a flush-mounted three-burner electric stove, microwave - convection oven, coffee maker, plus a refrigerator and freezer set under the counter. There's also a dinette for four opposite the galley. The 480 Sedan Bridge is powered by twin 660 horsepower Caterpillars (CAT3196TA) and superbly constructed with high-performance vinylester resin, 316 stainless steel bow and deck rails, and a self-bailing fiberglass cockpit with a gas-assisted bilge service hatch. Even underwater, it's protected by seacocks on all fittings and dripless shaft logs with an extra seal carrier kit. Available options run the gamut from engine and electronics packages to a lower control station.

Manufacturer Provided Original Equipment List

Sea Ray 480 Sedan Bridge Specifications - Standard Equipment Hull and Deck - 316 Stainless Steel Bow Rail - 316 Welded Stainless Steel Deck Rails - 4-Bolt Stainless Steel Cleats (8) - Boot Stripes - Bottom Paint - Color-Coordinated Thru-Hull Fittings - Fiberglass Swim Platform w- Hidden Stainless Steel Ladder & Grab Handle - Foam-Filled Under-Floor Areas - Forward Deck Sun Pad - Gel-Coat (Arctic White) - Gel-Coated Bilge Area - High-Performance Vinylerster Resin - Insulated Engine Compartment - Integral Hull Vent System - Meets Applicable USCG & ABYC Standards - Navigation Lights - NMMA Yacht Certification - PVC Rub Rail w- Stainless Steel Insert - Rod Holders (2) - Stainless Steel Deck Fill Plates - Stainless Steel Port Lights (4 Fixed, 6 Opening) - Translucent Deck Hatch w- Lock & Sky Screen Cover - Vac Pac Windlass - Anchor Rope Storage w- Hatch & Washdown Faucet - Lofrans Progress II Rope - Chain Windlass w- Foot Switches - Stainless Steel Anchor Chute Cockpit - Aft Transom Wall w- Fiberglass Storage Bins & Fold-Out Aft Seat - Aft Wall Fender Storage - Cockpit Side Storage Areas - Courtesy Lights - Molded-In Cockpit Boarding Steps - Self-Bailing Fiberglass Cockpit w- Gas-Assisted Bilge Service Hatch - Snap-In Carpet Liner - Transom Door Bridge (Plan A) - 12V Clarion AM-FM Digital Cassette Stereo w- 6-Disc CD Changer, Subwoofer, Amplifier, 6 Speakers, Cockpit Remote Control - 12V Receptacle - 316 Stainless Steel Bridge Safety Rails - Adjustable Captain Chairs w- Armrests (2) & Flip-Up Thigh-Rise Bolster - Aluminum-Framed Venturi Shield w- Handrail - Beverage Holders - Bridge Cocktail Table w- Sun Pad Filler Cushions - Bridge Control Station w- Windscreen - Bridge Cover - Burl Instrument Panels - Courtesy Lights - Fiberglass Bridge Hardtop - Fiberglass Sport Spoiler - Forward Curved Bench Seating w- Storage Below - Molded Bridge Access Steps w- Storage Compartment - Snap-In Carpet Liner - Wet Bar w- Sink, Trash Bin & Icemaker (120V - 60 Cycle) or (220V - 50 Cycle) - Wood-Accent Steering Wheel Cabin - 12V Directional Lighting - 12V Indirect Lighting - 120V Lighting - 120V Outlets Throughout (GFI Protected) - 120V Vacuum is Beam Dual Outlet - Deep-Pile Marine Carpet - Fabric Day - Night Shades w- Drape Trim - Granite-Colored Countertops & Tables (Aurora or Sandstone) - Handcrafted Wood Trim - Interior Sunbrella Carpet Runners - Throw Pillows Galley - 120V Microwave - Convection Oven - Dish Storage Cabinet - Dual-Voltage Lighting - Fiberglass Countertop w- Corian Cutting Board & Grohe Faucet - Flush-Mount Three-Burner Electric Stove (240V) - Glass & Bottle Storage Cabinet - Spacemaker Coffeemaker (120V - 60 Cycle) - Stainless Steel Handrail - Stainless Steel Stove Rail - Trash Chute w- Concealed Removable Trash Can - Under Counter 120V Freezer - Under Counter 120V Refrigerator - Upper & Lower Storage Cabinets Dinette - Aft Seat Base Storage - Opposing Dinette w- Table for 4 Salon - 12V Clarion Double Din AM-FM Digital Cassette & Single CD Stereo w- 6-Disc CD Changer, Amplifier & 6 Speakers - Electric Convertible Sofa - Sleeper w- Storage Below - Movable Dining Table - CD Storage Cabinet - Color TV - VCR - Radio Combo w- Antenna & TV Coax to Dockside - (120V - 60 Cycle) or (220V - 50 Cycle) - Tape Storage Cabinet Master Forward Stateroom - Cedar-Lined Hanging Lockers w- Mirrored Doors - Drawers & Storage Under Bed - Enclosed Gunwale Cabinets - Floor Storage Compartments - Full-Size Pedestal Bed w- Pillows, 2 Sets of Sheets & Coordinated Spread - Privacy Door - Side Shelf Storage - Color TV - VCR - Radio Combo w- Remote, Antenna & TV Coax to Dockside Master

Forward Stateroom Head and Shower - Corian Vanity Top w- Sink, Storage & Medicine Cabinet w- Mirror - Grohe Faucet - Holding Tank Level Indicators - Power Vent - Privacy Door - Shower w- Seat, Adjustable Shower Wand & Acrylic Circular Door - Stainless Steel Handrail - VacuFlush Head w- Fiberglass Settee Lid Port Stateroom - Built-In Storage w- Drawers - Cedar-Lined Hanging Locker w- Mirrored Door - Circular Skylight - Floor Storage Compartment - Full-Size Bed w- Pillows, 2 Sets of Sheets & Coordinated Spread - Color TV - VCR - Radio Combo w- Antenna Starboard Stateroom - Built-In Storage w- Drawers - Cedar-Lined Hanging Locker - Circular Skylight - Lower Bunks (2) w- Pillow Cases & 2 Sets of Sheets - Washer - Dryer Combo (120V - 60 Cycle) or (220V - 50 Cycle) Guest Head and Shower - Corian Vanity Top w- Sink, Storage & Medicine Cabinet w- Mirror - Grohe Faucet - Power Vent - Privacy Door - Shower w- Seat, Adjustable Shower Wand & Bifold Door - Stainless Steel Handrail - VacuFlush Head w- Fiberglass Settee Lid Windshield and Canvas - Opening Deck Windows - Sliding Salon Door w- Screen - Tempered Glass Windshield - Tinted - Aft Cover - Bimini Enclosure - Canvas Storage Bag - Sunbrella Bimini Top & Boot - Windshield Cover Technical - 50 Amp -240V - 60 Cycle Dockside Power w- Glendinning Cablemaster and Wireless Remote - 120V - 40 Amp - 12V Converter - 18 Gallon Water Heater (240V) - 50 Amp Electronics Circuit w- Ground Plate - 68 Gallon Head System Holding Tank w- Dockside Pump-Out - 8-D Batteries w- Boxes (2) & Group 27 for Genset (1) - ACR Remote-Controlled Spotlight - Aluminum Fuel Tanks w- Remote Fuel Filters & Electric Senders - Automatic Bilge Pumps (2) - Automatic Shower Sump Pump & Float Switch - Backlit Switch Panel w- Illuminated Weatherproof Rocker Switches & Dimmer Control - Bilge Lights - Bilge Washdown Faucet - Binnacle Dual Gear Shift & Throttle Controls - Cabin High Water Alarm & Pump - Color-Coded Wiring w- Chafe Protection - Compass - Concealed Dual Air Horns - Crossover Fuel System - Custom Sea Ray Backlit Instrumentation w- Low-Glare Blue Night Lighting - Digital LCD Systems Monitor for Engine - Diagnostics & Pump Monitoring - Dockside Water Inlet - Dual 12V Pressure Water System - Dual Racor Filters & Fuel Shutoff Valves - Electric Bilge Blowers (2) - Emergency Engine Stop - Emergency Start System - Engines - Engine Alarms (Water, Oil & Transmission Oil) - Engine Drip Sumps - Freshwater Washdown w- Hot & Cold Cockpit Shower - Galvanic Isolators (Zinc Saver) - Halon System - High Water Bilge Alarm & Pump - Hydraulic Steering w- Tilt Wheel - Main DC Breaker Panel - Main Distribution Panel - Oil Changer System - Power Pac Exhaust System w- Lift System Mufflers - Remote Circuit Breaker Panel - Ship's Bell - Synchronizer - Systems Monitor Panel - Tachometers w- Hourmeters - Telephone Inlet w- Cord Generator - Remote Start - Muffler, Freshwater Cooling, Filter, Seacock & Seawater Strainer - Remote Instrument Panel - (240V - 60 Cycle) 10.0 kW Westerbeke Diesel w- Sound Box Air Conditioning and Heating - 30,000 BTU - 2.5-Tons (240V - 60 Cycle) Raytheon Electronics - Raydata Multifunction Instrument including Depth Finder, Speed - Sumlog, Water Temperature - VHF Radio is 220 w- Remote Speaker & 8' Antenna Underwater Gear - 2 1-2" Stainless Steel Prop Shafts - Bonding System w- Large Zinc Hull Plate - Dripless Shaft Logs w- Extra Seal Carrier Kit - Hydraulic Trim Tabs - Manganese-Bronze Rudders & Struts - Nibral Propellers (4-Blade) - Propeller Modules - Seacocks On All Underwater Fittings - Seawater Strainers Engine - Sea Ray 480 Sedan Bridge Optional Equipment Engine (Twin Diesel Inboard) - T-CAT3196TA Caterpillar (T-640 hp - 477 kW) Generator - Remote Start - Muffler, Freshwater Cooling, Fuel Filter & Seawater

Strainer - 220V - Compass - Dual Companion Seat - Dual Station Spotlight Switch - Dual Station Trim Tab Switch - Twin Disc Electronic Controls - Windshield Washer - Windshield Wipers (3) Bridge (Plan B) - 12V Receptacle - 316 Stainless Steel Bridge Safety Rails - Beverage Holders (Stainless Steel) - Bridge Cover - Burl Instrument Panels - Courtesy Lights - Full Acrylic Venturi - Wet Bar Sink w- Lid - Wood-Accent Steering Wheel Crew Quarters - Drawer Storage - Lighting - Power Vent - Side Storage - Stainless Steel Opening Port Lights (2) - VacuFlush Head w- Pump-Out - Vanity w- Sink Stainless Steel Package - Stainless Steel Opening Deck Windows - Stainless Steel Sliding Salon Door w- Screen - Stainless Steel Tempered Glass Windshield - Tinted Bow Thruster - Bridge Ice maker - Console Cover - DSS Satellite System - Electronics Controls (For Upper Station Applications) - Emergency Bilge Pump System - Fiberglass Cockpit Deck Table - Gray Water System - Hynautic Controls - Live Baitwell System - - Power Steering - Stainless Steel Sliding Salon Door w- Screen - Vitricor Interior Wood Package (Cherry)

Broker Overview and Walkthrough

Searay got it right with the 480 SEDAN BRIDGE, one of the best looking convertible cruisers or the era and manufactured from 1998 through 2004. Built on a fully cored hull with prop pockets to reduce the shaft angles, the 480 boasts a surprisingly large interior for a boat in her size range. Step through the sliding glass door to a spacious salon with it's convertible L-shaped sofa, dinette and built in entertainment center. Opposite the large galley is designed with an island style breakfast bar and under counter refrigerator and freezer all concealed behind beautiful cabinetry. Large wrap around forward salon and side windows make the salon and upper cabin, galley appear huge, bright and inviting and Searay did a great job with lighting throughout the interior of the boat. Down 3 steps forward in the lower cabin are 3 staterooms, 2 queen staterooms and one convertible settee/bunk stateroom with built in washer/dryer as well as 2 large heads both with stall showers. There is plenty of drawer and hanging locker storage. The master stateroom is forward with a private and spacious ensuite head.

Cockpit & Flybridge

From the cockpit a molded in staircase leads to the bridge where wrap-around lounge seating is located forward of the helm as well as a Wetbar with Ice maker. Aft of the console are helm and companion swivel seats built on top of a large molded lockable storage box for plenty of flybridge storage. There is an overhead opening hatch in the Hardtop. The cockpit features a fold away aft seat across the transom, transom door, built in storage and live well in transom, transom "trunk" storage for Glendenning cablemaster, CATV inlet, a hot/cold shower and a large storage compartment to starboard outside of salon entry door.

Exterior and Interior Accommodations

Exterior & Interior Accommodations

The 480 SDB sports an unmistakably Sea Ray profile, with flowing, graceful lines and with a layout that promises uncompromising accommodations.

Topsides

A gently sloped, wide staircase leads from the cockpit level to the bridge, home to your "underway" entertainment.

Captain and companion can be seated at the helm in matching Sea Ray swivel captain's chairs, each with footrest and flip-up bolster. The broad helm console displays all electronic components within easy sight and reach and contains built-in storage beneath.

Forward of the console you will find very large wrap-around lounge, with serving table and storage, adjoined by a forward wet bar with built in refrigerator.

Sea Ray's stylish hardtop includes recessed lighting and an overhead vent hatch, plus sturdy support for the enclosure. The enclosure features a number of zip-outs to allow cool breezes to refresh you.

At cockpit level, you will find plenty of open floorspace, a large hatch for engine room access and a very comfortable transom bench, also with storage below. Molded cockpit steps lead onto each gunwale, with a wide side deck leading to the forward sunning area.

Salon & Staterooms

A large slider gains entry to the salon from the cockpit. With a broad windshield forward and large windows all around, the 480 SDB invites you aboard with bright vistas, but can also provide all of the needed privacy with luxurious drapes, blinds and appropriate windshield covers.

Features Sea Ray's Cherry Vitracore interior.

To the portside of the salon is an elongated lounge, which will extend to a sleeper with the touch of a button. A dual-leaf hi-low table serves cocktails or snacks at that lounge and the lounge faces the starboard entertainment and storage cabinet center. Forward of the lounge is the dinette, elevated to window level for great views and easy access, ready to serve four in comfort.

The galley is forward in the salon, to starboard. All appliances are hidden away by the

glittering cabinetry, including side-by-side refrigerator and freezer.

Step down and forward to the stateroom companionway. To the portside, find the spacious guest stateroom, with full-size berth, cedar-lined hanging locker, skylight and private access to the guest head. The guest head compartment includes a stall shower, head, nicely appointed vanity and additional access from the companionway.

To starboard, the bunk guestroom includes two lower-level bunks, which can be used as a sitting area, plus additional storage and the built-in washer-dryer combo.

The master stateroom is fully forward, with full size pedestal bed, dual hanging lockers, entertainment center and the full range of Sea Ray's traditionally abundant luxuries. The ensuite private head compartment includes a larger shower, vanity and head. Guest and master staterooms include coordinated comforters and pillows.

Galley

- Bar
- Stove
- Convection/microwave oven
- Fresh water system
- Water heater
- Central vacuum system
- Stainless steel Sink
- Simulated granite counter
- Garbage disposal

Deck & Hull

- Fiberglass Hardtop with overhead hatch
- Molded in stairwell cockpit to bridge
- Swim Platform with ladder
- Transom Door
- Dockside water Connection
- Hot/cold shower in Cockpit
- CATV inlet,cockpit
- Fold Away Aft Cockpit Bench seat
- 6 Rod Holders
- Anchor windlass, Anchor and Chain
- Transom Livewell
- Transom Fishbox
- Transom "trunk storage" locker
- Weaver Dinghy Davits
- Lines, Fenders, Docklines. Life Jackets
- Stainless steel Bow and Safety Rails

Electrical Equipment

- 10 KW Westerbeke Generator with 845 original hours
- 110 Volt AC Shorepower with 50 Amp Service
- 12 Volt DC Ship power
- Glendenning Cablemaster Auto Rewind

Electronics

- Raymarine E120 Radar
- Icom M302 VHF Radio
- Raytheon R41 XX Radar
- Furuno GP-1850 WDF Chart Plotter
- Raytheon RAYDATA Depth,Speed,Log
- Bennett Trim Tab Indicators
- ACL RCL100 Twin Beam Searchlight
- Caterpillar Electronic Engine Display Monitors
- VETUS Bow thruster
- Clarion CD/DVD Stereo Entertainment system
- TV's in Salon, Master Stateroom, Guest Stateroom 1, Guest stateroom 2

Engines & Machinery

- 3 Zone 30,000 BTU Air Conditioning/Heat
- Automatic Oil changing system
- Sea water Strainers Engines, Generator, Air conditioning system

Exclusions

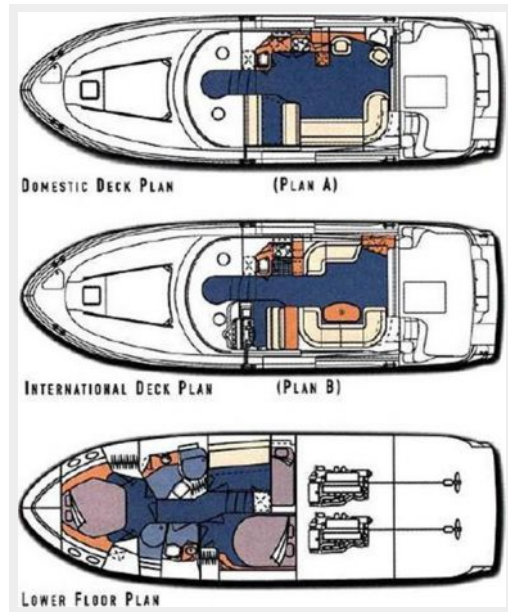
Owner's personal belongings.

Disclaimer

The Company offers the details of this vessel or yacht in good faith but cannot guarantee or warrant the accuracy of this information nor warrant the condition of the vessel. A buyer should instruct his representatives, agents, or his surveyors, to investigate such details as the buyer desires validated. This vessel or yacht is offered subject to prior sale, price change, or withdrawal without notice.

PHOTOS

Manufacturer Provided Image

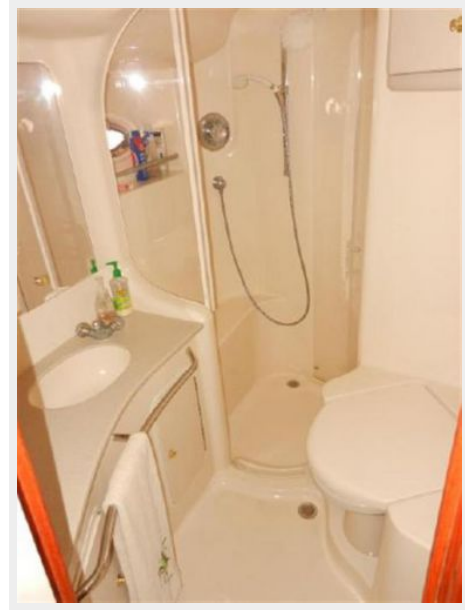




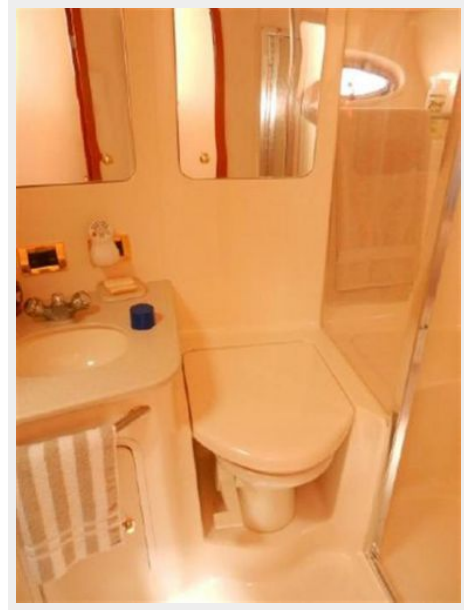


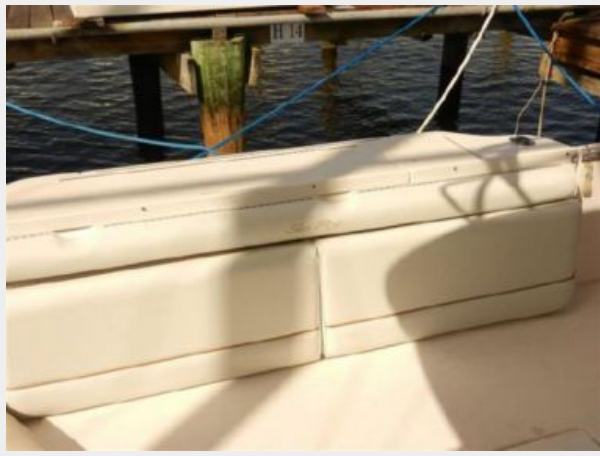
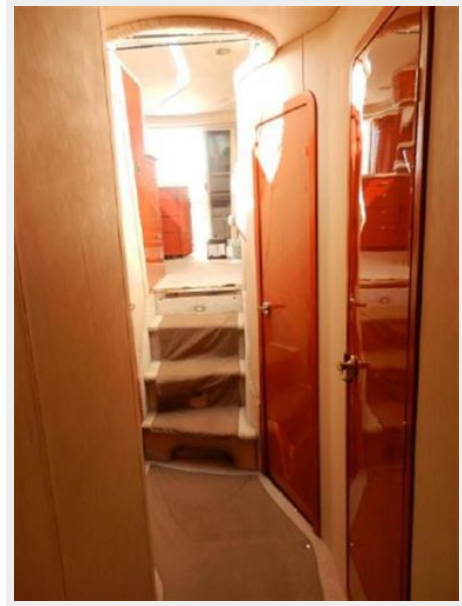




















CONTACTS

Andrey Shestakov, leading yacht broker of the sales department of Shestakov Yacht Sales Inc. Shestakov Yacht Sales Inc., the official representative of the Miami/Fort Lauderdale FL headquarters.

Contact details

Email: andrey@shestakovyachtsales.com

Web: shestakovyachtsales.com/en/

Telephones

USA: +1(954)274-4435

Office hours

Monday – Saturday: **9:00 - 21:00** EDT

Sunday: **closed**

Address



Harbour Towne Marina, 850 NE 3rd St,
STE 213, Dania, FL 33004