

48' 2008 SEA RAY 48 SUNDANCER — SEA RAY



Builder: [SEA RAY](#)

Year Built: 2008

Model: Cruiser

Price: **PRICE ON APPLICATION**

Location: United States

LOA: 48' 0" (14.63m)

Beam: 14' 8" (4.47m)

Max Draft: 4' 0" (1.22m)

Our experienced yacht broker, Andrey Shestakov, will help you choose and buy a yacht that best suits your needs 48' 2008 Sea Ray 48 Sundancer — SEA RAY from our catalogue. Presently, at Shestakov Yacht Sales Inc., we have a wide variety of yachts available on our sale's list. We also work in close contact with all the big yacht manufacturers from all over the world.

If you would like to buy a yacht 48' 2008 Sea Ray 48 Sundancer — SEA RAY or would like help answering any questions concerning purchasing, selling or chartering a yacht, please call **+1(954)274-4435**

TABLE OF CONTENTS

TABLE OF CONTENTS	2
SPECIFICATIONS	5
Basic Information	5
Dimensions	5
Speed, Capacities and Weight	5
Accommodations	5
Hull and Deck Information	5
Engine Information	6
DETAILED INFORMATION	7
Standard Features	7
Optional Features	13
Exclusions	14
Disclaimer	14
PHOTOS	15
Starb.Profile	15
Spacious aft cockpit	15
Cockpit refrigerator	15
Cockpit wet bar	15
Hard Top with Port and Starb. roof vents	16
Port side cockpit lounger	16
Adjustable helm seats	16
Helm Cover	16
Navigator touch screen GPS plotter & Raymarine E120 Radar/plotter	16
Helm	16
VHF-Northstar	17
Auto Pilot	17
Teak cabin steps	17
Bow thruster	17

Spacious Galley	18
Microwave (never used)	18
Salon TV	18
Spacious salon	18
Salon looking Fwd	18
Master queen berth	18
Wood galley flooring	19
Master Head	19
Master separate shower	19
Guest Cabin	19
Guest cabin TV/DVD	20
Guest cabin Vanity	20
Guest Head/shower	20
Guest Head/shower	20
Washer/dryer (never used)	21
Port Cummins Engine	21
Starboard Cummins Engine	21
Engine Hours	21
Onan 11.5KW generator w/optional sound shield	22
Generator hours	22
Oil change system	22
Remote Spot light	22
Manufacturer Provided Image	22
Optional All Chain windlass	22
CONTACTS	23
Contact details	23
Telephones	23
Office hours	23
Address	23

SPECIFICATIONS

Basic Information

Category: Cruiser

Sub Category: Express

Model Year: 2008

Year Built: 2008

Country: United States

Dimensions

LOA: 48' 0" (14.63m)

Beam: 14' 8" (4.47m)

Max Draft: 4' 0" (1.22m)

Speed, Capacities and Weight

Displacement: 34250 Pounds

Water Capacity: 110 Gallons

Holding Tank: 60 Gallons

Fuel Capacity: 400 Gallons

Accommodations

Total Berths: 5

Total Heads: 2

Hull and Deck Information

Hull Material: Fiberglass

Engine Information

Engines: 2

Manufacturer: Cummins

Model: VD-Cummins QSC 8.3 V-Drives

Engine Type: Inboard

Fuel Type: Diesel

DETAILED INFORMATION

Standard Features

Key Features

- U-shaped seating with storage below.
- Standard VHF radio.
- Sirius® Satellite Receiver with antenna.
- Large transom storage with gas-assist lid.
- **Optional** Sea Ray Navigator™ III - 12.1" chartplotter with sunlight-viewable touch-screen LCD.
- Standard 26" LCD flatscreen TV with remote DVD player in salon.
- Satin-nickel-finish push-button knobs and switch plates.
- Standard Ultraleather HP™ interior seating.
- Innerspring mattress standard in master stateroom.
- Convertible salon sofa-sleeper.
- **Optional** washer/dryer combo.
- Swim platform with concealed ladder.
- Standard hardtop with overhead lighting and two large opening sunroof hatches.
- Optional recessed forward deck sun pad.
- Fiberglass stringer system.
- Standard 240v/50 Amp shore power with convenient Glendinning cablemaster.
- Shore power and water inlets concealed in transom storage.
- Aluminum windshield frame and electric front vent.
- Patented underwater exhaust for quieter cruising.
- Dripless shaft logs with extra seal carrier kit.
- High-water bilge pump and alert system at helm.
- **Optional** bow thruster.
- Meets applicable USCG, NMMA, and ABYC (the highest "building code") standards.
- Sea Ray Owners Club AVAILABILITY
- Standard SmartCraft® Instrumentation and VesselView.

Standard Features

Air Conditioning / Heating

Custom Integral Vent System

Zone-Controlled Reverse-Cycle System

Cabin Features

Blinds, Wood

Carbon Monoxide Monitor

Carpet Runners, Interior

Carpet, Masland®

Handrails

Lighting, 12V Indirect

Lighting, 12V Xenon

Outlet & Switch Plates

Outlet, Phone

Outlets, 120V GFI Protected

Outlets, 12V Accessory

Pillows, Accent

Steps, Entryway

Storage, In-Floor

Wood Interior Package

Canvas (Sunbrella)

Aft Curtain

Canvas Storage Bag

Certifications

Meets Applicable USCG & ABYC Standards

NMMA Certification

Cockpit Features

Beverage Holders (10)

Carpet Liner, Snap-In (NEVER USED)

Door, Sliding Cabin Entry

Door, Transom

Floor Liner, Fiberglass

Handrails

Hardtop, Fiberglass

Hatch, Engine Service

Icemaker, 120V

Lighting, Indirect

Outlet, 120V GFI Protected

Outlet, 12V Accessory

Seating L-Shaped Bench

Seating, Pivoting Double Helm

Seating, U-Shaped

Ships Bell

Steps, Boarding

Stereo, Clarion

Storage, Side Panel

Table, Cockpit

Wet Bar

Control Station

Alarms, High-Water

Compass

Emergency Start System

Gel-Coated Dash

Horn, Air

Instrument Panel

Power Steering, Hydraulic

SmartCraft Diagnostics

SmartCraft™ Vessel View Display

Switch Panel

Switches, Illuminated

Electrical Systems

Batteries, 8-D

Battery Charger Overcurrent Protection

Battery Charger/Converter, 120V/50

Battery Switches

Cable TV System

Panel DC Circuit Breaker - Remote

Panel, DC Main Breaker

Panel, Main Distribution - AC

Panel, Main Distribution - DC

Shore Power, Cablemaster

Transformer, Shore Power Isolation

Wiring, Color-Coded

Electronics

Electronics Circuit, 12V/50 Amp

VHF Radio

Engine Room

Bilge Pumps, 12V

Bilge Pumps, 12V (2)

Blowers, 12V Bilge (2)

Exhaust, Underwater

Fire Suppression System

Gel-Coated Engine Room

Insulation, Engine Room - 2"

Ladder

Lighting, 12V

Oil Changer System

Forward Head - Port

Bathroom Tissue Holder

Door, Privacy

Handrails

Head, VacuFlush®

Power Vent, 12V

Robe Hook

Storage, Gunwale Cabinet

Storage, Medicine Cabinet

Vanity

Forward Shower - Starboard

Curtain, Shower

Door, Privacy

Handrails

Shower

Towel Rings (2)

Forward Stateroom

Bed, Full-Size Island-Style

Door, Privacy Sliding Pocket

Flooring, Wood

Hanging Lockers (2)

Mirrored Rope Locker Bulkhead

Storage, Side Shelves

TV 15" Flatscreen

Fuel System

Crossover Fuel System

Fuel Filters

Fuel Lines (USCG - Type A-1)

Fuel Tanks, Aluminum

Galley

Coffeemaker, 120V

Countertop, Solid-Surface
Handrails

Microwave/Convection Oven, 120V

Outlet, 12V Accessory

Power Vent, 12V

Refrigerator/Freezer, Upright

Storage, Drawers

Storage, Upper & Lower

Stove, Two-Burner (Surface Mounted)

Trash Receptacle

Generator

UPGRADED 11.5 kW Onan - Diesel, 120/240V/60 Cycle

Hull & Deck Features

Bottom Paint

Bow Rail

Canvas Colors

Cleats, Custom Sea Ray Thru-Bolted (8)

Deck Fill Plates

Deck Rails

Drain Plugs

Gel Coat, Arctic White

Graphics, Striping

Handrails

Hatch, Deck Vent

Hull Windows

Lights, Navigation

Portlights

Resin, High-Performance Vinylester

Rub Rail, PVC

Skylight, Flush Mount

Storage, Transom Wall

Stringer System, Fiberglass

Swim Platform, Integral/Extended

Thru-Hull Fittings

Toe Rail

Vent System, Engine Room

Windshield Washer System

Windshield Wipers

Windshield, Tempered/Tinted Curved Glass

Mid-Stateroom

Bed, Twin (2) Mattresses

Hanging Locker

Portlight

Privacy Door

Storage, Cabinets

Mid-Stateroom Head/Shower

Curtain, Shower

Door, Privacy

Handrail

Head, VacuFlush

Robe Hook

Shower

Storage, Medicine Cabinet

Towel Ring

Vanity

Propulsion

T-VD-Cummins MerCruiser QSC 8.3-540 Diesel V-Drives (T-517 hp - 405 kW)

Salon

Entertainment Center

Mirror, Wall Accent

Seating, L-Shaped Sofa

Storage, Gunwale Cabinets

Table, Dinette (Movable)

Underwater Gear

Bonding System

Propeller Shafts, 2"

Propellers, Nibral 4-Blade Cup

Rudders, Manganese-Bronze

Seacocks

Seawater Strainers

Shaft Logs, Dripless

Struts, Manganese-Bronze

Trim Tabs, Hydraulic

Waste Systems

Head System, VacuFlush

Holding Tank Level Indicators

Sump Box

Water System

Freshwater Washdown Spigots

Manifold System

Pressure Water System

Shower, Cockpit

Water Heater (11-Gallon)

Water Inlet, Dockside

Windlass System

Anchor Chute

Anchor Rope/Chain Storage (2)

Anchor Washdown Spigot

Anchor, Galvanized

Windlass, Rope/Chain

Optional Features

Generator

11.5 kW Onan - Diesel

Individual Options

Air Conditioning/Heating

Anchor

Bow Thruster

Generator Sound Shield

Gray Water System

4Underwater Lights

Macerator

DSS Satellite TV System

Upper Helm Flooring, Teak

Refrigerator, 120V

Rod Holders (2)

Seats, Dual Buckets

Spotlight

Stereo Upgrade

Stereo, iPod Interface

Canvas, Dash Cover
Sun Pad
Sun Pad Filler Cushions
Transformer, Shore Power Isolation Boost
Guest cabin TV, 15" Flatscreen
Cockpit TV, 20" Flatscreen
Vacuum System, Central
Washer/Dryer Combo, 120V
Windlass Capstan
Windlass, All-Chain
Yacht Flag & Flagpole

Exclusions

Owner's personal belongings.

Disclaimer

The Company offers the details of this vessel or yacht in good faith but cannot guarantee or warrant the accuracy of this information nor warrant the condition of the vessel. A buyer should instruct his representatives, agents, or his surveyors, to investigate such details as the buyer desires validated. This vessel or yacht is offered subject to prior sale, price change, or withdrawal without notice.

PHOTOS

Starb.Profile



Spacious aft cockpit



Cockpit wet bar



Cockpit refrigerator



Hard Top with Port and Starb. roof vents



Port side cockpit lounge



Adjustable helm seats



Helm Cover



Helm



Navigator touch screen GPS plotter & Raymarine E120 Radar/plotter



Auto Pilot



VHF-Northstar



Bow thruster



Teak cabin steps



Spacious Galley



Microwave (never used)



Salon TV



Spacious salon



Salon looking Fwd



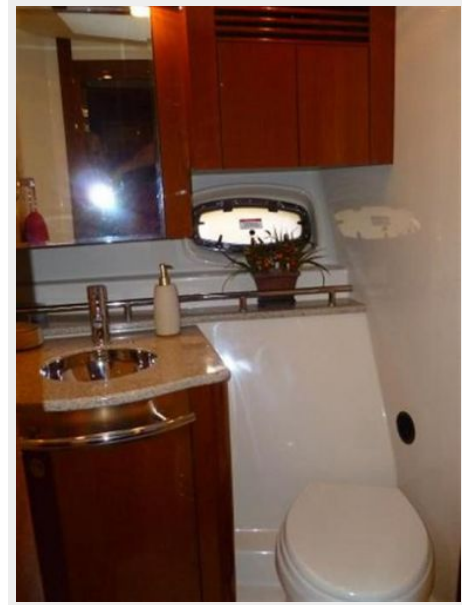
Master queen berth



Wood galley flooring



Master Head



Master separate shower



Guest Cabin



Guest cabin TV/DVD



Guest cabin Vanity



Guest Head/shower



Guest Head/shower



Washer/dryer (never used)



Port Cummins Engine



Starboard Cummins Engine



Engine Hours



Onan 11.5KW generator w/optional sound shield



Generator hours



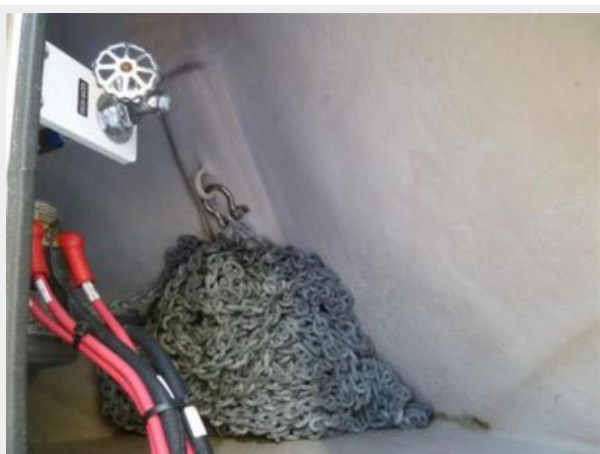
Oil change system



Remote Spot light



Optional All Chain windlass



Manufacturer Provided Image



CONTACTS

Andrey Shestakov, leading yacht broker of the sales department of Shestakov Yacht Sales Inc. Shestakov Yacht Sales Inc., the official representative of the Miami/Fort Lauderdale FL headquarters.

Contact details

Email: andrey@shestakovyachtsales.com

Web: shestakovyachtsales.com/en/

Telephones

USA: +1(954)274-4435

Office hours

Monday – Saturday: **9:00 - 21:00** EDT

Sunday: **closed**

Address



Harbour Towne Marina, 850 NE 3rd St,
STE 213, Dania, FL 33004