

## 48' 2008 SEA RAY 48 SUNDANCER — SEA RAY



**Судостроитель:** SEA RAY

**Год постройки:** 2008

**Модель:** Крейсер

**Цена:** **ЦЕНА ЯХТЫ ПО ЗАПРОСУ**

**Местонахождение:** United States

**Длина общая:** 48' 0" (14.63m)

**Ширина:** 14' 8" (4.47m)

**Макс. осадка:** 4' 0" (1.22m)

Купить 48' 2008 Sea Ray 48 Sundancer — SEA RAY а также выбрать подходящую вам яхту из нашего каталога яхт вам поможет опытный яхтенный брокер Андрей Шестаков. На сегодняшний день компания Shestakov Yacht Sales Inc. имеет большое количество яхт в собственном списке продаж, а также тесно сотрудничает со всеми крупными яхтенными производителями по всему миру. Для того чтобы купить яхту 48' 2008 Sea Ray 48 Sundancer — SEA RAY а также проконсультироваться по любому вопросу связанному с покупкой, продажей, чартером яхт позвоните по телефону **+7(918)465-66-44**.

# ОГЛАВЛЕНИЕ

ОГЛАВЛЕНИЕ	2
ХАРАКТЕРИСТИКИ	5
Основная информация	5
Размеры	5
Скорость, вместимость и масса	5
Размещение	5
Корпус и палуба	5
Информация о двигателе	6
ПОДРОБНОЕ ОПИСАНИЕ	7
Standard Features	7
Optional Features	13
Исключения	14
Отказ от ответственности	14
ФОТОГРАФИИ	15
Starb.Profile	15
Spacious aft cockpit	15
Cockpit refrigerator	15
Cockpit wet bar	15
Hard Top with Port and Starb. roof vents	16
Port side cockpit lounger	16
Adjustable helm seats	16
Helm Cover	16
Navigator touch screen GPS plotter & Raymarine E120 Radar/plotter	16
Helm	16
VHF-Northstar	17
Auto Pilot	17
Teak cabin steps	17
Bow thruster	17

Spacious Galley	18
Microwave (never used)	18
Salon TV	18
Spacious salon	18
Salon looking Fwd	18
Master queen berth	18
Wood galley flooring	19
Master Head	19
Master separate shower	19
Guest Cabin	19
Guest cabin TV/DVD	20
Guest cabin Vanity	20
Guest Head/shower	20
Guest Head/shower	20
Washer/dryer (never used)	21
Port Cummins Engine	21
Starboard Cummins Engine	21
Engine Hours	21
Onan 11.5KW generator w/optional sound shield	22
Generator hours	22
Oil change system	22
Remote Spot light	22
Manufacturer Provided Image	22
Optional All Chain windlass	22
<b>КОНТАКТЫ</b>	<b>23</b>
Контактная информация	23
Телефоны	23
Время работы	23
Адрес	23



# ХАРАКТЕРИСТИКИ

## Основная информация

Тип судна: Крейсер

Подкатегория: Express

Модельный год: 2008

Год постройки: 2008

Страна: United States

## Размеры

Длина общая: 48' 0" (14.63m)

Ширина: 14' 8" (4.47m)

Макс. осадка: 4' 0" (1.22m)

## Скорость, вместимость и масса

Водоизмещение: 34250 Pounds

Вместимость воды: 110 Gallons

Вместимость сточного бака: 60 Gallons

Объем топливного бака: 400 Gallons

## Размещение

Всего коек: 5

Всего ком. состава: 2

## Корпус и палуба

Материал корпуса: Fiberglass

---

## Информация о двигателе

---

**Двигатели:** 2

**Производитель:** Cummins

**Модель:** VD-Cummins QSC 8.3 V-Drives

**Тип двигателя:** Inboard

**Тип топлива:** Diesel

---

# ПОДРОБНОЕ ОПИСАНИЕ

---

## Standard Features

---

### Key Features

- U-shaped seating with storage below.
- Standard VHF radio.
- Sirius® Satellite Receiver with antenna.
- Large transom storage with gas-assist lid.
- **Optional** Sea Ray Navigator™ III - 12.1" chartplotter with sunlight-viewable touch-screen LCD.
- Standard 26" LCD flatscreen TV with remote DVD player in salon.
- Satin-nickel-finish push-button knobs and switch plates.
- Standard Ultraleather HP™ interior seating.
- Innerspring mattress standard in master stateroom.
- Convertible salon sofa-sleeper.
- **Optional** washer/dryer combo.
- Swim platform with concealed ladder.
- Standard hardtop with overhead lighting and two large opening sunroof hatches.
- Optional recessed forward deck sun pad.
- Fiberglass stringer system.
- Standard 240v/50 Amp shore power with convenient Glendinning cablemaster.
- Shore power and water inlets concealed in transom storage.
- Aluminum windshield frame and electric front vent.
- Patented underwater exhaust for quieter cruising.
- Dripless shaft logs with extra seal carrier kit.
- High-water bilge pump and alert system at helm.
- **Optional** bow thruster.
- Meets applicable USCG, NMMA, and ABYC (the highest "building code") standards.
- Sea Ray Owners Club AVAILABILITY
- Standard SmartCraft® Instrumentation and VesselView.

### Standard Features

#### Air Conditioning / Heating

Custom Integral Vent System

Zone-Controlled Reverse-Cycle System

#### Cabin Features

Blinds, Wood

Carbon Monoxide Monitor

Carpet Runners, Interior

Carpet, Masland®

Handrails

Lighting, 12V Indirect

Lighting, 12V Xenon

Outlet & Switch Plates

Outlet, Phone

Outlets, 120V GFI Protected

Outlets, 12V Accessory

Pillows, Accent

Steps, Entryway

Storage, In-Floor

Wood Interior Package

### **Canvas (Sunbrella)**

Aft Curtain

Canvas Storage Bag

### **Certifications**

Meets Applicable USCG & ABYC Standards

NMMA Certification

### **Cockpit Features**

Beverage Holders (10)

Carpet Liner, Snap-In (NEVER USED)

Door, Sliding Cabin Entry

Door, Transom

Floor Liner, Fiberglass

Handrails

Hardtop, Fiberglass

Hatch, Engine Service

Icemaker, 120V

Lighting, Indirect

Outlet, 120V GFI Protected

Outlet, 12V Accessory

Seating L-Shaped Bench

Seating, Pivoting Double Helm

Seating, U-Shaped

Ships Bell

Steps, Boarding



Stereo, Clarion

Storage, Side Panel

Table, Cockpit

Wet Bar

### **Control Station**

Alarms, High-Water

Compass

Emergency Start System

Gel-Coated Dash

Horn, Air

Instrument Panel

Power Steering, Hydraulic

SmartCraft Diagnostics

SmartCraft™ Vessel View Display

Switch Panel

Switches, Illuminated

### **Electrical Systems**

Batteries, 8-D

Battery Charger Overcurrent Protection

Battery Charger/Converter, 120V/50

Battery Switches

Cable TV System

Panel DC Circuit Breaker - Remote

Panel, DC Main Breaker

Panel, Main Distribution - AC

Panel, Main Distribution - DC

Shore Power, Cablemaster

Transformer, Shore Power Isolation

Wiring, Color-Coded

### **Electronics**

Electronics Circuit, 12V/50 Amp

VHF Radio

### **Engine Room**

Bilge Pumps, 12V

Bilge Pumps, 12V (2)

Blowers, 12V Bilge (2)

Exhaust, Underwater

Fire Suppression System

Gel-Coated Engine Room

Insulation, Engine Room - 2"

Ladder

Lighting, 12V

Oil Changer System

### **Forward Head - Port**

Bathroom Tissue Holder

Door, Privacy

Handrails

Head, VacuFlush®

Power Vent, 12V

Robe Hook

Storage, Gunwale Cabinet

Storage, Medicine Cabinet

Vanity

### **Forward Shower - Starboard**

Curtain, Shower

Door, Privacy

Handrails

Shower

Towel Rings (2)

### **Forward Stateroom**

Bed, Full-Size Island-Style

Door, Privacy Sliding Pocket

Flooring, Wood

Hanging Lockers (2)

Mirrored Rope Locker Bulkhead

Storage, Side Shelves

TV 15" Flatscreen

### **Fuel System**

Crossover Fuel System

Fuel Filters

Fuel Lines (USCG - Type A-1)

Fuel Tanks, Aluminum

Galley

Coffeemaker, 120V

Countertop, Solid-Surface  
Handrails

Microwave/Convection Oven, 120V

Outlet, 12V Accessory

Power Vent, 12V

Refrigerator/Freezer, Upright

Storage, Drawers

Storage, Upper & Lower

Stove, Two-Burner (Surface Mounted)

Trash Receptacle

### **Generator**

UPGRADED 11.5 kW Onan - Diesel, 120/240V/60 Cycle

### **Hull & Deck Features**

Bottom Paint

Bow Rail

Canvas Colors

Cleats, Custom Sea Ray Thru-Bolted (8)

Deck Fill Plates

Deck Rails

Drain Plugs

Gel Coat, Arctic White

Graphics, Striping

Handrails

Hatch, Deck Vent

Hull Windows

Lights, Navigation

Portlights

Resin, High-Performance Vinylester

Rub Rail, PVC

Skylight, Flush Mount

Storage, Transom Wall

Stringer System, Fiberglass

Swim Platform, Integral/Extended

Thru-Hull Fittings

Toe Rail

Vent System, Engine Room

Windshield Washer System

Windshield Wipers

Windshield, Tempered/Tinted Curved Glass

Mid-Stateroom

Bed, Twin (2) Mattresses

Hanging Locker

Portlight

Privacy Door

Storage, Cabinets

Mid-Stateroom Head/Shower

Curtain, Shower

Door, Privacy

Handrail

Head, VacuFlush

Robe Hook

Shower

Storage, Medicine Cabinet

Towel Ring

Vanity

Propulsion

T-VD-Cummins MerCruiser QSC 8.3-540 Diesel V-Drives (T-517 hp - 405 kW)

Salon

Entertainment Center

Mirror, Wall Accent

Seating, L-Shaped Sofa

Storage, Gunwale Cabinets

Table, Dinette (Movable)

Underwater Gear

Bonding System

Propeller Shafts, 2"

Propellers, Nibral 4-Blade Cup

Rudders, Manganese-Bronze

Seacocks

Seawater Strainers

Shaft Logs, Dripless

Struts, Manganese-Bronze

Trim Tabs, Hydraulic

Waste Systems

Head System, VacuFlush

Holding Tank Level Indicators

Sump Box

Water System

Freshwater Washdown Spigots

Manifold System

Pressure Water System

Shower, Cockpit

Water Heater (11-Gallon)

Water Inlet, Dockside

Windlass System

Anchor Chute

Anchor Rope/Chain Storage (2)

Anchor Washdown Spigot

Anchor, Galvanized

Windlass, Rope/Chain

## Optional Features

---

Generator

11.5 kW Onan - Diesel

Individual Options

Air Conditioning/Heating

Anchor

Bow Thruster

Generator Sound Shield

Gray Water System

4Underwater Lights

Macerator

DSS Satellite TV System

Upper Helm Flooring, Teak

Refrigerator, 120V

Rod Holders (2)

Seats, Dual Buckets

Spotlight

Stereo Upgrade

Stereo, iPod Interface

Canvas, Dash Cover  
Sun Pad  
Sun Pad Filler Cushions  
Transformer, Shore Power Isolation Boost  
Guest cabin TV, 15" Flatscreen  
Cockpit TV, 20" Flatscreen  
Vacuum System, Central  
Washer/Dryer Combo, 120V  
Windlass Capstan  
Windlass, All-Chain  
Yacht Flag & Flagpole

---

## Исключения

---

При продаже яхты исключаются личные вещи владельца.

---

## Отказ от ответственности

---

Компания предоставляет описание судна или яхты добросовестно, но не может гарантировать точность этой информации, а также не ручается за техническое состояние. Покупатель должен проинструктировать своих агентов или оценщиков исследовать представленную информацию более подробно, по собственному желанию. Продажа судна или яхты, изменение цены или снятие с продажи будет происходить без предварительного уведомления.

# ФОТОГРАФИИ

**Starb.Profile**



**Spacious aft cockpit**



**Cockpit wet bar**



**Cockpit refrigerator**



**Hard Top with Port and Starb. roof vents**



**Port side cockpit lounge**



**Adjustable helm seats**



**Helm Cover**



**Helm**



**Navigator touch screen GPS plotter & Raymarine E120 Radar/plotter**





**Auto Pilot**



**VHF-Northstar**



**Bow thruster**



**Teak cabin steps**



**Spacious Galley**



**Microwave (never used)**



**Salon TV**



**Spacious salon**



**Salon looking Fwd**



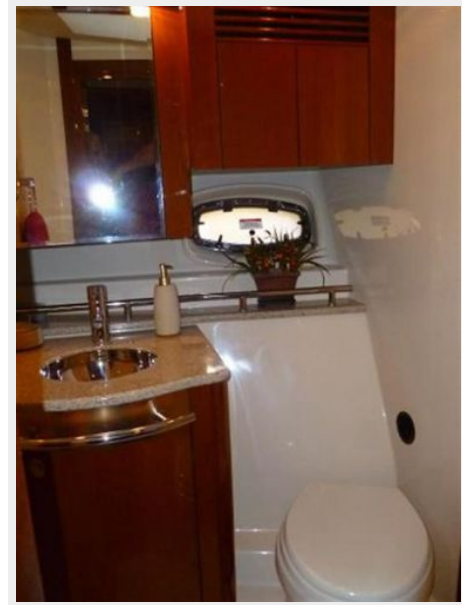
**Master queen berth**



**Wood galley flooring**



**Master Head**



**Master separate shower**



**Guest Cabin**





**Guest cabin TV/DVD**



**Guest cabin Vanity**



**Guest Head/shower**



**Guest Head/shower**



**Washer/dryer (never used)**



**Port Cummins Engine**



**Starboard Cummins Engine**



**Engine Hours**



### Onan 11.5KW generator w/optional sound shield



### Generator hours



### Oil change system



### Remote Spot light



### Optional All Chain windlass



### Manufacturer Provided Image



# КОНТАКТЫ

---

Андрей Шестаков (Andrey Shestakov) – ведущий яхтенный брокер отдела продаж яхт и судов компании Shestakov Yacht Sales Inc. Официальный представитель Shestakov Yacht Sales Inc. для русскоговорящих клиентов в центральном офисе компании в Майами/Форт Лодердейл/Флорида/США.

## Контактная информация

---

Email: [andrey@shestakovyachtsales.com](mailto:andrey@shestakovyachtsales.com)

Web: [shestakovyachtsales.com](http://shestakovyachtsales.com)

## Телефоны

---

Краснодарский край: **+7(918)465-66-44**

США, Майами, Флорида: **+1(954)274-4435**

## Время работы

---

Понедельник – Суббота: **9:00 - 21:00**  
EDT

Воскресенье: **Закрыто**

## Адрес

---



Harbour Towne Marina, 850 NE 3rd St,  
STE 213, Dania, FL 33004