

BEWITCHED — DEFEVER



Builder: DEFEVER

Year Built: 1990

Model: Motor Yacht

Price: PRICE ON APPLICATION

Location: United States

LOA: 57' 0" (17.37m)

Beam: 16' 6" (5.03m)

Min Draft: 5' 0" (1.52m)

Max Draft: 5' 0" (1.52m)

Cruise Speed: 10 Kts. (12 MPH)

Max Speed: 18 Kts. (21 MPH)

Our experienced yacht broker, Andrey Shestakov, will help you choose and buy a yacht that best suits your needs **Bewitched — DEFEVER** from our catalogue. Presently, at Shestakov Yacht Sales Inc., we have a wide variety of yachts available on our sale's list. We also work in close contact with all the big yacht manufacturers from all over the world.

If you would like to buy a yacht **Bewitched — DEFEVER** or would like help answering any questions concerning purchasing, selling or chartering a yacht, please call **+1(954)274-4435**

TABLE OF CONTENTS

TABLE OF CONTENTS	2
SPECIFICATIONS	6
Overview	6
Basic Information	6
Dimensions	6
Speed, Capacities and Weight	6
Accommodations	7
Hull and Deck Information	7
Engine Information	7
DETAILED INFORMATION	8
57' DeFever Overview	8
57' DeFever Vessel Walkthrough	8
57' DeFever Accommodations	8
57' DeFever Salon	8
57' DeFever Galley	8
57' DeFever Dining	9
57' DeFever Master Stateroom	9
57' DeFever VIP Guest Stateroom	9
57' DeFever Forward Guest Stateroom	9
57' DeFever Laundry	9
57' DeFever Pilothouse	10
57' DeFever Flybridge	10
57' DeFever Aftdeck	10
57' DeFever Audio/Visual Equipment	10
57' DeFever Electronics	10
57' DeFever Electrical System	11
57' DeFever Engine/Mechanical Equipment	11
57' DeFever Deck Equipment	12

57' DeFever Tender	12
57' DeFever Safety & Fire Protection	12
57' DeFever Exclusions	13
57' DeFever Disclaimer	13
Exclusions	13
Disclaimer	13
PHOTOS	15
57' DeFever forward profile	15
57' DeFever port aft profile	15
57' DeFever aft profile	15
57' DeFever anchor windlass	15
57' DeFever port side deck photo1	16
57' DeFever foredeck aft	16
57' DeFever port side deck photo2	16
57' DeFever starboard side deck photo1	16
57' DeFever starboard side deck photo2	17
57' DeFever flybridge forward	17
57' DeFever flybridge aft	17
57' DeFever flybridge port	17
57' DeFever flybridge starboard	17
57' DeFever flybridge helm	17
57' DeFever flybridge seating	18
57' DeFever tender	18
57' DeFever tender davit	18
57' DeFever aft deck	18
57' DeFever aft deck port	18
57' DeFever aft deck starboard	18
57' DeFever swim platform	19
57' DeFever salon forward	19

57' DeFever salon aft	19
57' DeFever salon port	19
57' DeFever salon port seating	19
57' DeFever salon starboard	19
57' DeFever galley	20
57' DeFever dining table	20
57' DeFever dayhead	20
57' DeFever pilothouse forward	20
57' DeFever pilothouse helm	20
57' DeFever pilothouse port	20
57' DeFever pilothouse starboard	21
57' DeFever master stateroom	21
57' DeFever master stateroom port	21
57' DeFever master stateroom starboard	21
57' DeFever master stateroom head	21
57' DeFever master stateroom forward	21
57' DeFever master stateroom shower	22
57' DeFever VIP guest stateroom	22
57' DeFever VIP guest stateroom starboard	22
57' DeFever VIP guest stateroom	22
57' DeFever VIP guest stateroom head	23
57' DeFever VIP guest stateroom shower	23
57' DeFever forward guest stateroom desk	23
57' DeFever forward guest stateroom	23
57' DeFever forward guest stateroom head	24
57' DeFever washer	24
57' DeFever engine room forward	24
57' DeFever engine room aft	24
57' DeFever port main engine	24

57' DeFever starboard main engine	24
57' DeFever stabilizer system	25
57' DeFever port generator sound box	25
57' DeFever port generator	25
57' DeFever starboard generator sound box	25
57' DeFever battery charger	26
57' DeFever starboard generator	26
CONTACTS	27
Contact details	27
Telephones	27
Office hours	27
Address	27

SPECIFICATIONS

Overview

Bewitched is a unique 57' POC model, in that she offers a full beam salon, a dayhead on the main deck and a very accommodating stainless steel and teak set of stairs the swimplatform. She offers a 3 stateroom 3 head layout, including a full beam master stateroom aft and a full height engine room. This motivated seller has completed his boating, so he encourages any serious offers. Price reduced!

Basic Information

Category: Motor Yacht

Sub Category: Flushdeck

Model Year: 1990

Year Built: 1990

Country: United States

Vessel Top: Bimini Top

Fly Bridge: Yes

Dimensions

LOA: 57' 0" (17.37m)

Beam: 16' 6" (5.03m)

Min Draft: 5' 0" (1.52m)

Max Draft: 5' 0" (1.52m)

Clearance: 24' 0" (7.32m)

Speed, Capacities and Weight

Cruise Speed: 10 Kts. (12 MPH)

Max Speed: 18 Kts. (21 MPH)

Displacement: 80000 Pounds

Water Capacity: 240 Gallons

Holding Tank: 40 Gallons

Fuel Capacity: 1360 Gallons

Accommodations

Total Cabins: 3

Total Berths: 4

Sleeps: 6

Total Heads: 4

Hull and Deck Information

Hull Material: Fiberglass

Deck Material: Composite Fiberglass

Hull Configuration: Semi-Displacement

Hull Color: White

Hull Finish: Fiberglass

Engine Information

Engines: 2

Manufacturer: Caterpillar

Model: 3196TA

Engine Type: Inboard

Fuel Type: Diesel

DETAILED INFORMATION

57' DeFever Overview

Bewitched is a unique 57' POC model, in that she offers a full beam salon, a dayhead on the main deck and a very accommodating stainless steel and teak set of stairs the swimplatform. She offers a 3 stateroom 3 head layout, including a full beam master stateroom aft and a full height engine room. This motivated seller has completed his boating, so he encourages any serious offers. Price reduced!

57' DeFever Vessel Walkthrough

From the swimplatform, you walk up the stainless steel and teak stairs to the covered aftdeck, where you can then walk through the double teak & glass doors into the full beam salon. In the salon, you will find a sofa and end table and an Erkornes stressless lounge chair to port, a teak dining table forward, entertainment cabinet starboard forward and a stairwell to the master stateroom and engine room starboard aft. Walking forward, you will find the galley to port and a dayhead to starboard before you enter the pilothouse. In the pilothouse, you will find the console forward, a benchseat aft, side deck access doors on each side, stairs to the guest staterooms starboard forward and stairs to the flybridge starboard aft.

The headliners and lighting were updated in 2002 and the exterior cushions were updated in 2008. There are screen doors and screens on the opening windows.

57' DeFever Accommodations

Bewitched offers a full beam master stateroom aft with a centerline queen size berth and ensuite head, a mid guest stateroom with queen size berth and ensuite head and a forward guest stateroom with a v-berth and ensuite head.

57' DeFever Salon

The full beam salon offers double teak & glass doors with Phantom roll-away screen doors aft, a sofa, coffee table, end table and an Erkornes Stressless lounge chair to port, teak dining table forward, a dayhead starboard forward, entertainment cabinet to starboard and a stairwell to the master stateroom and engine room starboard aft. There are opening side windows, carpet and the entertainment cabinet includes a liquor cabinet, U-Line icemaker and storage.

57' DeFever Galley

The galley is located port forward in the salon.

- Modern Maid oven and 4-burner electric cooktop
- GE Monogram refrigerator/freezer
- Sharp Carousel microwave oven
- Premia dishwasher
- Double stainless steel sinks
- U-Line icemaker in the salon
- GE chest freezer on the flybridge

57' DeFever Dining

Dining space is available at the six-person teak dining table in the salon, at the aftdeck table and at the flybridge table

57' DeFever Master Stateroom

The full beam master stateroom is located aft and offers a queen size berth, 2 large hanging lockers, storage drawers and cabinets, night stands/cabinets, reading lights, 4 portlights and 2 transom hatches, teak & holly sole and an ensuite head with an enclosed shower.

57' DeFever VIP Guest Stateroom

The VIP guest stateroom is located amidships and offers a queen size berth, night stand/cabinet, reading lights, hanging locker, storage drawers and cabinets, vanity/desk, 2 portlights, teak & holly sole and an ensuite head with enclosed shower.

57' DeFever Forward Guest Stateroom

The forward guest stateroom offers a v-berth with insert, reading lights, hanging locker, portlight and overhead hatch, vanity/desk, teak & holly sole and an ensuite head with enclosed shower.

57' DeFever Laundry

Frigidaire washer

57' DeFever Pilothouse

The pilothouse is on the same level as the salon and offers a full helm forward, a benchseat aft, side deck access doors on each side, internal stairs to the flybridge, teak & holly sole and a chart/storage cabinet.

57' DeFever Flybridge

The large flybridge offers a full helm forward, wrap-around seating and table, storage, helmseat, bimini, Eisenglass enclosure, non-skid deck and hinged arch.

57' DeFever Aftdeck

The covered aftdeck offers a non-skid deck, full Eisenglass enclosure, double teak & glass doors to the salon, teak cap rails, transom door to the stairs leading to the swimplatform, built-in benchseat aft and deck furniture.

57' DeFever Audio/Visual Equipment

- KVH Tracvision M3 satellite tv system
- Toshiba flat screen TV with DVD player in the salon
- Stereo receiver in the salon
- Toshiba flat screen TV with DVD player in the master stateroom and VIP guest stateroom

57' DeFever Electronics

- Ritchie Powerdamp magnetic compass in the pilothouse and on the flybridge
- Garmin 4210 GPSMap chart plotter in the pilothouse
- Autohelm ST7000 autopilot in the pilothouse and on the flybridge
- Raytheon Pathfinder R70 Radar in the pilothouse with remote monitor on the flybridge
- Raytheon 1365 Fish Finder in the pilothouse
- Standard Horizon VHF in the pilothouse
- Cobra VHF on the flybridge
- Standard hailer

-
- Autohelm Tridata system
 - Raymarine ST60+ multi-system
 - Intercom system
 - Rudder angle indicator
 - Aftdeck and engine room camera system

57' DeFever Electrical System

- Onan 15 kW generator with 1736 hours
- Onan 8 kW generator 814 hours
- Xantrex 2500 watt inverter with remote panel
- TrueCharge 40+ battery charger
- Acme transformer
- 50 amp shore cord
- Three 50 amp shore power connections
- Glendinning Cablemaster system

57' DeFever Engine/Mechanical Equipment

- Twin Caterpillar 3196TA 660 hp main engines
- ZF 350 gearboxes
- Glendinning electronic engine controls
- Glendinning engine synchronizer
- PSS dripless shaft seals (Replaced 2009)
- Dual Racor fuel filters with vacuum gauges
- Flo Scan fuel meters
- Oil change system
- Hynautic hydraulic steering system

-
- Wesmar bowthruster (2002)
 - Naiad stabilizer system (2002)
 - Bennett trim tabs
 - 4-bladed 32" X 27" propellers
 - 2 1/2" stainless steel shafts
 - Spare parts inventory

57' DeFever Deck Equipment

- Maxwell Nillson anchor windlass
- CQR 105lb anchor with 200' chain
- Raw water washdown
- Hot/cold fresh water shower on the aftdeck
- Foredeck seating with storage
- Marquipt boarding ladder and gangway
- Teak cap rails
- Non-skid decks
- Stainless steel & teak stairs from the aftdeck to the swimplatform
- Stainless steel swim ladder
- Windshield covers

57' DeFever Tender

- 1999 11'5" Novurania RIB with a bimini and vhf
- Honda 50 hp 4-stroke outboard (2002)
- Nautical Structures 1,000lb tender davit (2002)

57' DeFever Safety & Fire Protection

-
- Rule bilge pumps
 - Halon 1301 engine room fire suppression system
 - Fire extinguishers
 - Life jackets
 - ACR 406 EPIRB
 - Avon 6-person liferaft
 - Jabsco searchlight
 - Smoke alarms
 - Carbon Monoxide monitors
 - Aftdeck and engine room security camera system

57' DeFever Exclusions

- Sellers' personal belongings
- Artwork
- Tools
- BBQ grill

57' DeFever Disclaimer

The Company offers the details of this vessel in good faith but cannot guarantee or warrant the accuracy of this information nor warrant the condition of the vessel. A buyer should instruct his agents, or his surveyors, to investigate such details as the buyer desires validated. This vessel is offered subject to prior sale, price change, or withdrawal without notice.

Exclusions

Owner's personal belongings.

Disclaimer

The Company offers the details of this vessel or yacht in good faith but cannot guarantee or

warrant the accuracy of this information nor warrant the condition of the vessel. A buyer should instruct his representatives, agents, or his surveyors, to investigate such details as the buyer desires validated. This vessel or yacht is offered subject to prior sale, price change, or withdrawal without notice.

PHOTOS

57' DeFever forward profile



57' DeFever port aft profile



57' DeFever aft profile



57' DeFever anchor windlass



57' DeFever port side deck photo1



57' DeFever foredeck aft



57' DeFever port side deck photo2



57' DeFever starboard side deck photo1



57' DeFever starboard side deck photo2



57' DeFever flybridge forward



57' DeFever flybridge aft



57' DeFever flybridge port



57' DeFever flybridge starboard



57' DeFever flybridge helm



57' DeFever flybridge seating



57' DeFever tender



57' DeFever tender davit



57' DeFever aft deck



57' DeFever aft deck port



57' DeFever aft deck starboard



57' DeFever swim platform



57' DeFever salon forward



57' DeFever salon aft



57' DeFever salon port



57' DeFever salon port seating



57' DeFever salon starboard



57' DeFever galley



57' DeFever dining table



57' DeFever dayhead



57' DeFever pilothouse forward



57' DeFever pilothouse helm



57' DeFever pilothouse port



57' DeFever pilothouse starboard



57' DeFever master stateroom



57' DeFever master stateroom port



57' DeFever master stateroom starboard



57' DeFever master stateroom head



57' DeFever master stateroom forward



57' DeFever master stateroom shower



57' DeFever VIP guest stateroom



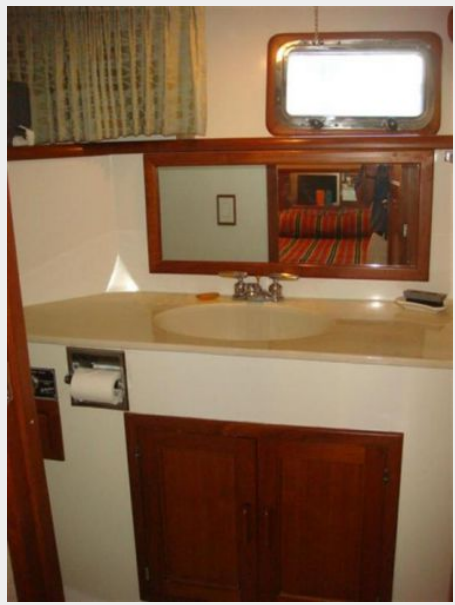
57' DeFever VIP guest stateroom starboard



57' DeFever VIP guest stateroom



57' DeFever VIP guest stateroom head



57' DeFever VIP guest stateroom shower



57' DeFever forward guest stateroom



57' DeFever forward guest stateroom desk



57' DeFever forward guest stateroom head



57' DeFever washer



57' DeFever engine room forward



57' DeFever engine room aft



57' DeFever port main engine



57' DeFever starboard main engine



57' DeFever stabilizer system



57' DeFever port generator sound box



57' DeFever port generator



57' DeFever starboard generator sound box



57' DeFever starboard generator



57' DeFever battery charger



CONTACTS

Andrey Shestakov, leading yacht broker of the sales department of Shestakov Yacht Sales Inc. Shestakov Yacht Sales Inc., the official representative of the Miami/Fort Lauderdale FL headquarters.

Contact details

Email: andrey@shestakovyachtsales.com

Web: shestakovyachtsales.com/en/

Telephones

USA: +1(954)274-4435

Office hours

Monday – Saturday: **9:00 - 21:00** EDT

Sunday: **closed**

Address



Harbour Towne Marina, 850 NE 3rd St,
STE 213, Dania, FL 33004