

AZIMUT 80 CARAT ZERO SPD STABILIZERS — AZIMUT



Builder: AZIMUT

Year Built: 2004

Model: Motor Yacht

Price: PRICE ON APPLICATION

Location: United States

LOA: 80' 0" (24.38m)

Beam: 19' 0" (5.79m)

Min Draft: 5' 11" (1.80m)

Max Draft: 6' 7" (2.01m)

Our experienced yacht broker, Andrey Shestakov, will help you choose and buy a yacht that best suits your needs **Azimut 80 Carat Zero Spd Stabilizers — AZIMUT** from our catalogue. Presently, at Shestakov Yacht Sales Inc., we have a wide variety of yachts available on our sale's list. We also work in close contact with all the big yacht manufacturers from all over the world.

If you would like to buy a yacht **Azimut 80 Carat Zero Spd Stabilizers — AZIMUT** or would like help answering any questions concerning purchasing, selling or chartering a yacht, please call **+1(954)274-4435**

TABLE OF CONTENTS

TABLE OF CONTENTS	2
SPECIFICATIONS	3
Basic Information	3
Dimensions	3
Speed, Capacities and Weight	3
Accommodations	3
Hull and Deck Information	3
Engine Information	4
DETAILED INFORMATION	5
Details	5
Exclusions	5
Disclaimer	6
PHOTOS	7
CONTACTS	12
Contact details	12
Telephones	12
Office hours	12
Address	12

SPECIFICATIONS

Basic Information

Category: Motor Yacht

Model Year: 2004

Year Built: 2004

Country: United States

Dimensions

LOA: 80' 0" (24.38m)

LWL: 78' 9" (24.00m)

Beam: 19' 0" (5.79m)

Min Draft: 5' 11" (1.80m)

Max Draft: 6' 7" (2.01m)

Speed, Capacities and Weight

Displacement: 125400 Pounds

Water Capacity: 390 Gallons

Fuel Capacity: 1560 Gallons

Accommodations

Total Cabins: 4

Total Berths: 10

Total Heads: 4

Crew Sleeps: 4

Crew Heads: 1

Hull and Deck Information

Hull Material: Fiberglass

Hull Configuration: Modified V-Hull

Hull Designer: Stefano Righini

Engine Information

Engines: 2

Manufacturer: MTU

Model: 12V 2000 M9

Fuel Type: Diesel

DETAILED INFORMATION

Details

Specs Designer: Stefano Righini Flag of Registry: Puerto Rico (US) Hull Shape: Modified Vee Dimensions LOA: 79 ft 11 in Beam: 19 ft 0 in LWL: 78 ft 9 in Minimum Draft: 5 ft 11 in Maximum Draft: 6 ft 7 in Deadrise: 10 ° at Transom Dry Weight: 125400 lbs Engines Engine 1: Engine Brand: MTU Year Built: 2004 Engine Model: 12V 2000 M9 Engine Type: Inboard Engine/Fuel Type: Diesel Engine(s) Total Power: 1500 HP Engine 2: Engine Brand: MTU Year Built: 2004 Engine Model: 12V 2000 M9 Engine Type: Inboard Engine/Fuel Type: Diesel Engine(s) Total Power: 1500 HP Tanks Fresh Water Tanks: (390 Gallons) Fuel Tanks: (1560 Gallons) Accommodations Number of single berths: 10 Number of cabins: 4 Number of heads: 5 Electronics Radio Radar - Northstar CD player Autopilot - Raymarine ST6001+ DVD player - Samsung Blu Ray VHF - ICOM IC-M604 Cockpit speakers GPS - Raymarine ST290 Furuno GPS Navnet VX2 TV set - Samsung LCD Flat screen Plotter Compass - Zenith VCR Depthsounder Inside Equipment Microwave oven - GE Stern thruster Dishwasher Washing machine - Miele Bow thruster - American and Wes mar. Vessel has both forward and aft thrusters. Refrigerator - Frigomar Hot water Fresh water maker Air conditioning - Cruisair & Marine Air Systems Air compressor Oven - Miele Electrical Equipment Generator - Kohler 23EQ2 and Kohler 32EQ2 Shore power inlet Outside Equipment/Extras Teak cockpit Teak sidedecks Covers Bimini Top Manufacturer Provided Description Being or...wellbeing? The thrill of looking out at the open water, the expansive feeling of the spaces, the relaxation of body and mind... the flybridge is like an enormous living room with two facing sofas. An elegance surpassed only by the sophisticated amenities designed to entertain and pamper the guests, with an unmistakable touch of style. The future of boat design has arrived. A new approach to space layout, furnishing design, and interior lighting. Azimut 80 combines the allure of minimalism with the utmost in comfort. Large open spaces, the joy of living and entertaining. Dream Therapy. In the sleeping area, every room is filled with sophisticated elegance and charm, as you find yourself in the land of dreams. Clean lines, refined forms, concepts that foster wellbeing and promote relaxation. BERTHS / STATEROOMS Master stateroom: In Mid cabin area, full beam stateroom, Raised island bed. Private head Equipped with separate controlled air conditioner. TV with high fidelity surround sound. Walk In Hanging closet. Guest stateroom 1: In V-berth area, Full size bed. Private head TV, Hanging closet. Guest stateroom 2: Port side. Shared head with private entry door, TV. Two separate beds. Guest stateroom 3: Starboard side. Private head TV, two separate beds. Crew quarters: Down stairs from galley with private head and two bunk beds. HEADS Four heads plus one in crew quarters. Toilets with electric flush pump. Showers: Stand up stall. Circular shower door with water jets and ceiling shower.

Exclusions

Owner's personal belongings.

Disclaimer

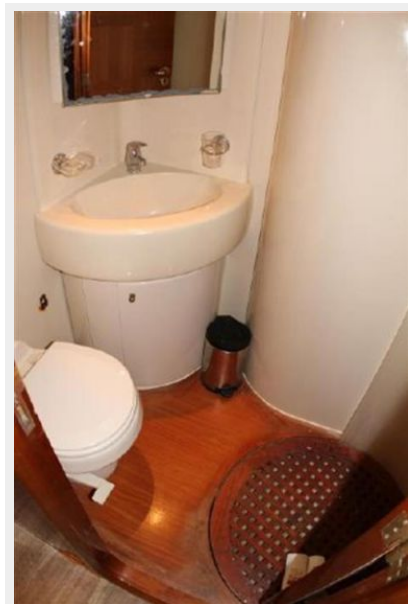
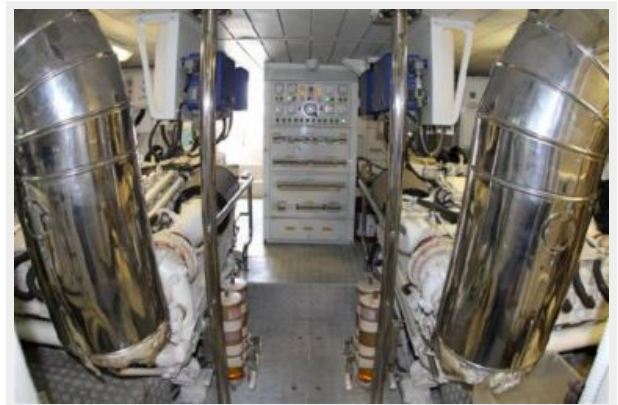
The Company offers the details of this vessel or yacht in good faith but cannot guarantee or warrant the accuracy of this information nor warrant the condition of the vessel. A buyer should instruct his representatives, agents, or his surveyors, to investigate such details as the buyer desires validated. This vessel or yacht is offered subject to prior sale, price change, or withdrawal without notice.

PHOTOS











CONTACTS

Andrey Shestakov, leading yacht broker of the sales department of Shestakov Yacht Sales Inc. Shestakov Yacht Sales Inc., the official representative of the Miami/Fort Lauderdale FL headquarters.

Contact details

Email: andrey@shestakovyachtsales.com

Web: shestakovyachtsales.com/en/

Telephones

USA: +1(954)274-4435

Office hours

Monday – Saturday: **9:00 - 21:00** EDT

Sunday: **closed**

Address



Harbour Towne Marina, 850 NE 3rd St,
STE 213, Dania, FL 33004