

DANA — RIVA



Builder: [RIVA](#)

Year Built: 2012

Model: Motor Yacht

Price: PRICE ON APPLICATION

Location: Italy

LOA: 68' 0" (20.73m)

Beam: 17' 10" (5.44m)

Max Draft: 6' 0" (1.83m)

Cruise Speed: 35 Kts. (40 MPH)

Max Speed: 39 Kts. (45 MPH)

Our experienced yacht broker, Andrey Shestakov, will help you choose and buy a yacht that best suits your needs **Dana — RIVA** from our catalogue. Presently, at Shestakov Yacht Sales Inc., we have a wide variety of yachts available on our sale's list. We also work in close contact with all the big yacht manufacturers from all over the world.

If you would like to buy a yacht **Dana — RIVA** or would like help answering any questions concerning purchasing, selling or chartering a yacht, please call **+1(954)274-4435**

TABLE OF CONTENTS

TABLE OF CONTENTS	2
SPECIFICATIONS	3
Overview	3
Basic Information	3
Dimensions	3
Speed, Capacities and Weight	3
Accommodations	3
Hull and Deck Information	4
Engine Information	4
DETAILED INFORMATION	5
Main Bridge	5
Helm Station	5
Engines	5
Galley	5
Owner Cabin	5
Twin Cabin	6
VIP Cabin	6
Crew Cabin	6
Exclusions	6
Disclaimer	6
PHOTOS	7
CONTACTS	10
Contact details	10
Telephones	10
Office hours	10
Address	10

SPECIFICATIONS

Overview

Designed for speed, the Super Ego cuts through the waves at 35 knots and tops out at 39 knots. Her sexy profile turns heads everywhere she goes and Owners and Guests can enjoy her luxurious 3 stateroom layout with all the comforts of home. Priced to Sell. Bring offers!

Basic Information

Category: Motor Yacht

Model Year: 2012

Year Built: 2012

Country: Italy

Dimensions

LOA: 68' 0" (20.73m)

Beam: 17' 10" (5.44m)

Max Draft: 6' 0" (1.83m)

Speed, Capacities and Weight

Cruise Speed: 35 Kts. (40 MPH)

Max Speed: 39 Kts. (45 MPH)

Displacement: 92593 Pounds

Water Capacity: 208 Gallons

Fuel Capacity: 951 Gallons

Accommodations

Total Cabins: 3

Total Heads: 2

Crew Cabin: 1

Crew Heads: 1

Hull and Deck Information

Hull Material: Fiberglass

Engine Information

Engines: 2

Manufacturer: MTU

Fuel Type: Diesel

DETAILED INFORMATION

Main Bridge

- TV Screen
- Decoder
- Bose Stereo System
- Fridge
- Ice Maker

Helm Station

- Furuno Radar
- Furuno GPS
- Taymarine Autopilot
- ZF Power Control Set
- Yacht Controller System

Engines

- Engines 2x MTU 10V 2000 M94 1193.7kw
- Engerator Koheler 19kw
- Condaria Air Conditioning
- Idromar Desalt
- 2x Video Cameras Sony

Galley

- Fridge
- Microwave Oven
- Grill Oven
- Dishwasher
- TC Screen
- DVD Player

Owner Cabin

- TV Screen
- Bose Stereo System

- Decoder
- Safe Box

Twin Cabin

- TV Screen
- Decoder
- Radio System

VIP Cabin

- TV Screen
- Decoder
- Radio System

Crew Cabin

- Radio System

Exclusions

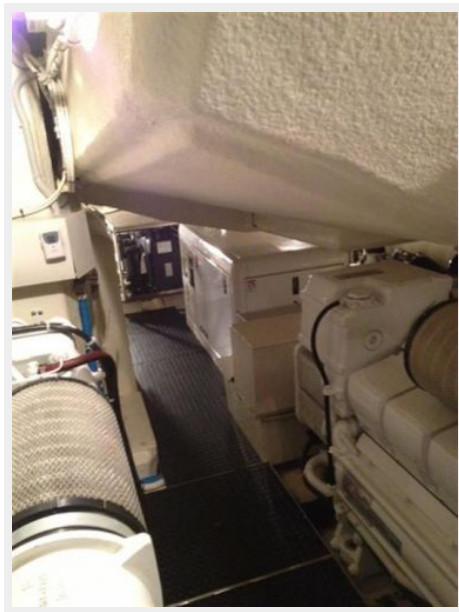
Owner's personal belongings.

Disclaimer

The Company offers the details of this vessel or yacht in good faith but cannot guarantee or warrant the accuracy of this information nor warrant the condition of the vessel. A buyer should instruct his representatives, agents, or his surveyors, to investigate such details as the buyer desires validated. This vessel or yacht is offered subject to prior sale, price change, or withdrawal without notice.

PHOTOS







CONTACTS

Andrey Shestakov, leading yacht broker of the sales department of Shestakov Yacht Sales Inc. Shestakov Yacht Sales Inc., the official representative of the Miami/Fort Lauderdale FL headquarters.

Contact details

Email: andrey@shestakovyachtsales.com

Web: shestakovyachtsales.com/en/

Telephones

USA: +1(954)274-4435

Office hours

Monday – Saturday: **9:00 - 21:00** EDT

Sunday: **closed**

Address



Harbour Towne Marina, 850 NE 3rd St,
STE 213, Dania, FL 33004