

FANCY NANCY — MERIDIAN



Судостроитель: MERIDIAN

Год постройки: 2005

Модель: Моторная яхта

Цена: ЦЕНА ЯХТЫ ПО ЗАПРОСУ

Местонахождение: United States

Длина общая: 41' 0" (12.50m)

Ширина: 14' 2" (4.32m)

Макс. осадка: 3' 9" (1.14m)

Крейс. скорость: 23 Kts. (26 MPH)

Макс. скорость: 28 Kts. (32 MPH)

Купить **Fancy Nancy — MERIDIAN** а также выбрать подходящую вам яхту из нашего каталога яхт вам поможет опытный яхтенный брокер Андрей Шестаков. На сегодняшний день компания **Shestakov Yacht Sales Inc.** имеет большое количество яхт в собственном списке продаж, а также тесно сотрудничает со всеми крупными яхтенными производителями по всему миру.

Для того чтобы купить яхту **Fancy Nancy — MERIDIAN** а также проконсультироваться по любому вопросу связанному с покупкой, продажей, чартером яхт позвоните по телефону **+7(918)465-66-44**.

ОГЛАВЛЕНИЕ

ОГЛАВЛЕНИЕ	2
ХАРАКТЕРИСТИКИ	6
Основная информация	6
Размеры	6
Скорость, вместимость и масса	6
Размещение	6
Корпус и палуба	6
Информация о двигателе	7
ПОДРОБНОЕ ОПИСАНИЕ	8
Cockpit	8
Salon	8
Galley	9
Master Stateroom	9
Master Head	10
Accommodations	10
VIP / Day Head	10
Bridge and Helm	11
Engines and Mechanical	12
Systems	12
Исключения	13
Отказ от ответственности	13
ФОТОГРАФИИ	14
Manufacturer Provided Image	14
Port Quarter	14
Manufacturer Provided Image	14
Large Swim Platform	14
Astern	14
Shiny Hull	14

Transom Entry Door	15
Cockpit Stowage	15
Freshwater Shower	15
Portside	15
Starboardside	16
From Bow	16
Bow	16
Anchor Windlass	16
Raw Water Washdown	16
Clean Chain Locker	16
Moulded Stairs to Bridge	17
Bridge Hatch	17
Helm	17
Helm Covers	17
Bow and Stern Thrusters	18
Upgraded Raymarine E120	18
Port Engine Hours	18
Starboard Engine Hours	18
Horizon Matrix VHF	18
Aft Bridge Seating	18
Salon Entry	19
L Shaped Seating to Port	19
L Shaped Sofa	19
Loveseat	19
Salon Entertainment Center	20
Galley to Port	20
Galley II	20
Galley III	20
Galley Storage	20

Dual Stainless Steel Sinks	20
Gangway Down Below	21
Dinnette to Starboard	21
Master to Starboard	21
Master Island Queen	21
Master to Port	22
Ensuite Master Head	22
Enclosed Shower Master	22
VIP Entry	22
VIP Entertainment	23
VIP Loveseat	23
VIP Hanging Locker	23
VIP Island Queen	23
VIP Ensuite Head Access	24
VIP/Day Head	24
Washer Dryer Combi Unit	24
Engine Room Access	24
Down to Engine Room	25
New Batteries	25
Port Cummins 6BTA 370	25
Starboard Cummins 6BTA 370	25
1000hr Onan 11.5kW Genset	25
Spare Waterpumps	25
Electrical Panel	26
Manufacturer Provided Image	26
КОНТАКТЫ	27
Контактная информация	27
Телефоны	27
Время работы	27

Адрес

27

ХАРАКТЕРИСТИКИ

Основная информация

Тип судна: Моторная яхта

Модельный год: 2005

Год постройки: 2005

Страна: United States

Размеры

Длина общая: 41' 0" (12.50m)

Ширина: 14' 2" (4.32m)

Макс. осадка: 3' 9" (1.14m)

Трапы: 15' 0" (4.57m)

Скорость, вместимость и масса

Крейс. скорость: 23 Kts. (26 MPH)

Крейсерская скорость поворота: 2600 Kts.

Макс. скорость: 28 Kts. (32 MPH)

Макс. скорость поворота: 3050 Kts.

Водоизмещение: 25000 Pounds

Вместимость воды: 150 Gallons

Вместимость сточного бака: 55 Gallons

Объем топливного бака: 400 Gallons

Размещение

Всего кают: 2

Всего коек: 4

Всего ком. состава: 2

Корпус и палуба

Материал корпуса: Fiberglass

Информация о двигателе

Двигатели: 2

Производитель: Cummins

Модель: 6BTA

Тип двигателя: Inboard

Тип топлива: Diesel

ПОДРОБНОЕ ОПИСАНИЕ

Cockpit

Boarding Fancy Nancy at the swim platform offers easy transom access through the cockpit door. The large swim platform and cockpit makes loading a breeze. The large cockpit is mostly covered by the bridge overhang providing protection from the weather or shade while boarding.

Storage all throughout the cockpit in the transom and side lockers and fender storage in the step wells. The two large hatches in the cockpit sole offer access to batteries and tanks as well as massive storage space. The entire area can be enclosed using the canvas enclosure to help keep out the elements. The cockpit carpeting is unused and has been stored since new.

- Custom Enclosure
- Sliding glass door (tempered, locking)
- 12v courtesy lighting
- Moulded staircase to bridge
- Hinged engine room access.
- Lazarette hatches through cockpit deck (2)
- Self-bailing cockpit
- Transom door with access to swim platform
- Shore water connection
- Transom shower with hot & cold fresh water controls
- Bridge stereo remote control
- Speakers
- Fender storage
- Built-in cooler/fish box
- Transom storage cabinets
- Fresh & raw water washdown

Salon

Walking through the sliding glass door into the salon you are presented with a 360 degree view outside. The full glass aft bulkhead and large panoramic windows gives an open feeling to the inside. Tall and roomy with lots of seating and storage; a very nice place to come into when it's time to go "down below"

- Mirage leather port & starboard seating
- Flexsteel magic bed
- Solid cherry hi-lo table w/folding leaf
- 24" flat screen TV w remote
- 110V AM/FM/CD/DVD surround sound entertainment center
- 12v overhead lights

- 110v grounded outlet
- Extra 110v grounded outlet
- Engine access
- Ice maker
- Power distribution panel
- Storage

Galley

Stepping forward from the salon to port is the galley. Lots of counter space and food prep area. You quickly notice the continued open feeling while in this area as the extra large side windows and windshields keep a light, airy atmosphere. This carries over to the starboard side raised dinette. While sitting up in this area you maintain the 360 view outside; a great place for meals, playing cards, or just lounging with a fantastic view.

The dinette also drops down into a double berth.

- Karadon custom solid surface countertops
- Teak & holly flooring
- Double stainless steel sink
- AC/DC Nova Kool under counter separate refrigerator & freezer
- Electric cooktop (2-burner easy to clean glasstop)
- Convection microwave
- Coffeemaker
- 110v GFI Outlets
- Lighted corner carousel storage
- Designated dish storage
- Overhead lights
- Drawer storage
- Pots & pans storage

Master Stateroom

Moving forward is the spacious Master Stateroom. The island berth provides access from both sides. To port and starboard are hanging lockers and storage with under the bed drawers and more storage. Opening portlights and the escape hatch provide natural light to this inviting room.

- Queen pedestal bed w/innerspring mattress
- Storage compartments below mattress
- Cedar lined hanging lockers
- Flat screen TV & DVD
- Overhead lights
- 110v grounded outlets

- Drawer storage
- Cherry privacy door with lock

Master Head

The Ensuite Master Head is to port. A large head area with a large enclosed shower gives plenty of room.

- Solid surface top vanity cabinet
- Stainless steel sink
- Mirrored medicine cabinet
- Large moulded shower enclosure
- Vacuflush marine toilet
- 110v grounded outlet
- Overhead lights
- Ventilation fan
- Cherry privacy door with lock

Accommodations

Moving forward down the stairs to the two staterooms. These are both very large staterooms with the VIP actually larger than the Master.

The VIP stateroom is amidships to starboard. Stepping into the stateroom you are greeted with a loveseat and opens up into the sunken sleeping area. The island berth is cozy and inviting and gives a relaxing place to finally end the day.

The cabinets store the washer/dryer combi unit.

- Queen pedestal bed
- Cedar lined hanging lockers (2)
- Built-in dresser with (3) storage drawers
- Upholstered setee with storage below
- Overhead Lights
- 110v Grounded outlet
- (2) reading lights
- Cherry privacy door with lock
- Entrance to guest head through locking cherry door

VIP / Day Head

The VIP stateroom provides en suite access into the large head area giving your guests

additional privacy while still performing as the day head with access from the gangway.

- Solid surface vanity cabinet
- Stainless steel sink
- Medicine cabinet
- Shower with curtain
- Vacuflush marine toilet
- 110v grounded outlet
- Overhead lights
- Ventilation fan
- Entrance from companionway
- Cherry door with lock

Bridge and Helm

From the cockpit up the molded staircase and through the closing doorway is the extra large bridge. L-shaped seating to port, loveseat to starboard and an extra large sunpad area behind the seat. A wet bar with plenty of storage under the seats.

The helm has dual adjustable seating and a great view while navigating. The helm layout is intuitive and easy to use with great visibility. The upgraded Raymarine E120 provides large screen navigation and radar images.

- Raymarine E120 color display with electronic charts
- Horizon Matrix VHF
- Rule flush mounted compass
- Wood grain dash panel
- Adjustable dual helm seat with storage
- Dual engine controls
- Multi-gauge analog helm w/ tachometer, fuel, voltmeter, oil pressure gauge, temp & hour meters
- New Sony Marine Grade AM/FM/CD stereo with full sound speakers
- iPod connection
- L-shaped lounge seating with storage
- Curved lounge seating with storage
- Full covers for helm and seating
- Reverse venturi style windscreen, smoke-tinted, aluminum frame
- Fiberglass radar arch
- Wet bar with sink & storage below
- Huge storage in brow forward of L-lounge seating
- 110v grounded outlet
- Beverage holders (7)
- Dual switched courtesy lights

Engines and Mechanical

Access to the engine room is through the large door hidden behind the bridge steps. The engine compartment is roomy with good around the motors and systems. The generator is located aft and is enclosed in an insulated quiet box.

Well cared after and properly maintained Cummins 6BTA's power the Meridian nicely. Roughly 610 hours on the mains. New batteries with an extra bank of house batteries. There are new water pumps (\$1500 worth) already on board when needed. This original owner believes in preventive, not reactive maintenance!!

- Twin Cummins 6BTA Diesel engines 370hp each
- Bennett hydraulic trim tabs
- High engine temperature & low engine oil pressure alarm
- Teleflex hydraulic steering
- Fuel shutoff solenoids
- Stainless steel propeller shafts
- PSS packless sealing system
- Dripless shaft logs
- Internal sea strainers

- Overhead lighting
- Access ladder
- Non-skid flooring
- 110v grounded outlet

Systems

- Onan 11.5kw generator
- 12v Lighting
- 12v navigation lights
- Batteries: (6) 6v deep cycle house, (2) engine start, (1) generator start
- (4) Battery Switches
- Battery charger 30 amp
- Battery parallel system
- 50 amp shore power connection with power cable reel
- 12v monitoring system
- Power distribution panel with magnetic circuit breakers for AC & DC breaker switches
- Color-coded, custom harnessed wiring
- Cable TV and telephone shore side connections
- Sacrificial anode with electrical bonding system
- TV antennae

Plumbing Components

- (4)Rule Bilge Pumps: 200gph, 800gph, 200gph forward, 200gph aft
- 11 gallon hot water heater
- Pressurized water system with 150 gallon freshwater tank
- 12v Macerator
- Shower sump
- Forward & aft raw water washdowns

Исключения

При продаже яхты исключаются личные вещи владельца.

Отказ от ответственности

Компания предоставляет описание судна или яхты добросовестно, но не может гарантировать точность этой информации, а также не ручается за техническое состояние. Покупатель должен проинструктировать своих агентов или оценщиков исследовать представленную информацию более подробно, по собственному желанию. Продажа судна или яхты, изменение цены или снятие с продажи будет происходить без предварительного уведомления.

ФОТОГРАФИИ

Port Quarter



Manufacturer Provided Image



Manufacturer Provided Image



Large Swim Platform



Astern



Shiny Hull



Cockpit Stowage



Transom Entry Door



Freshwater Shower



Portside



Starboardside



From Bow



Bow



Anchor Windlass



Raw Water Washdown



Clean Chain Locker



Moulded Stairs to Bridge



Bridge Hatch



Helm



Helm Covers



Upgraded Raymarine E120



Bow and Stern Thrusters



Port Engine Hours



Starboard Engine Hours



Horizon Matrix VHF



Aft Bridge Seating



L Shaped Seating to Port



Salon Entry



L Shaped Sofa



Loveseat



Salon Entertainment Center



Galley to Port



Galley II



Galley III



Galley Storage



Dual Stainless Steel Sinks



Dinette to Starboard



Gangway Down Below



Master Island Queen



Master to Starboard



Master to Port



Ensuite Master Head



Enclosed Shower Master



VIP Entry



VIP Entertainment



VIP Loveseat



VIP Island Queen



VIP Hanging Locker



VIP Ensuite Head Access



VIP/Day Head



Washer Dryer Combi Unit



Engine Room Access



Down to Engine Room



New Batteries



Port Cummins 6BTA 370



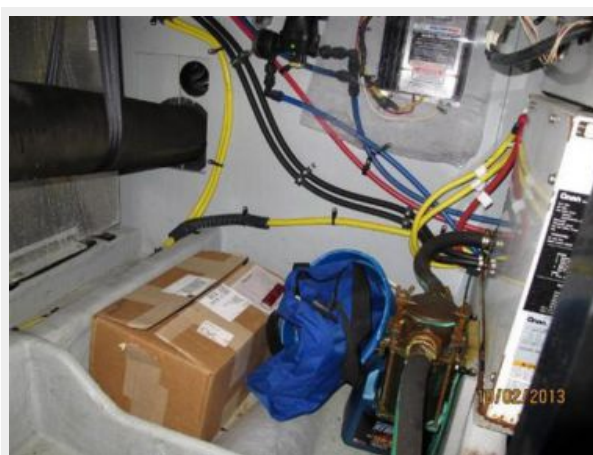
Starboard Cummins 6BTA 370



1000hr Onan 11.5kW Genset



Spare Waterpumps



Electrical Panel



Manufacturer Provided Image



КОНТАКТЫ

Андрей Шестаков (Andrey Shestakov) – ведущий яхтенный брокер отдела продаж яхт и судов компании Shestakov Yacht Sales Inc. Официальный представитель Shestakov Yacht Sales Inc. для русскоговорящих клиентов в центральном офисе компании в Майами/Форт Лодердейл/Флорида/США.

Контактная информация

Email: andrey@shestakovyachtsales.com

Web: shestakovyachtsales.com

Телефоны

Краснодарский край: **+7(918)465-66-44**

США, Майами, Флорида: **+1(954)274-4435**

Время работы

Понедельник – Суббота: **9:00 - 21:00**
EDT

Воскресенье: **Закрето**

Адрес



Harbour Towne Marina, 850 NE 3rd St,
STE 213, Dania, FL 33004